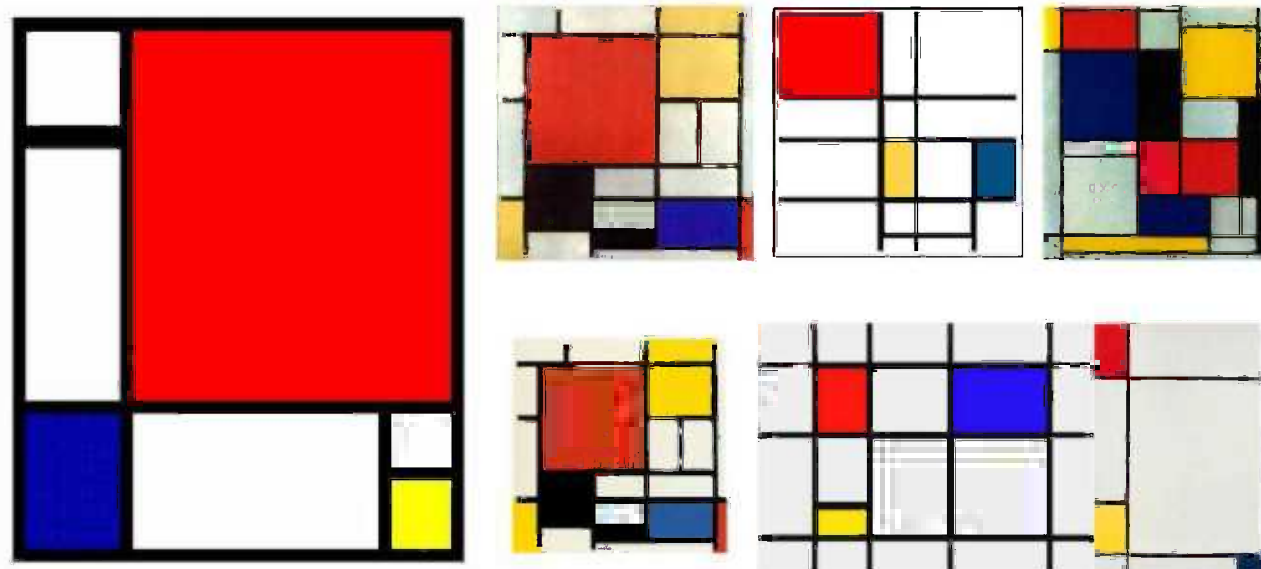
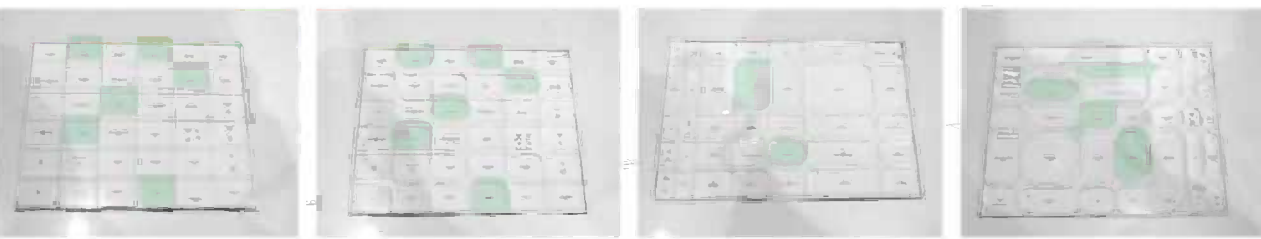
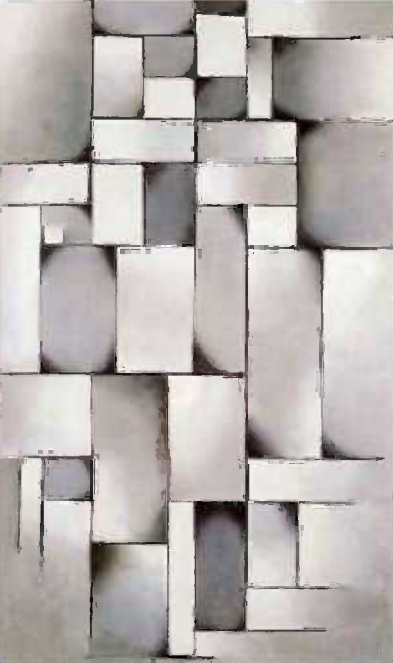


MONDRIAN IN SANDBERG



PROJECT'S **IDEA** IN BASED A SIMPLE GEOMETRY WITH SQUARES AND RECTANGLES. IT TAKES ADVANTAGE OF THE **LAND'S** STEEP, MAKING A DIRECT WAY TO THE RIVER THROUGH THE COMPLEX. THERE ARE DIFFERENT POSSIBILITIES FROM THE ROAD FOR WALKING, PASSING BY PLATFORM, BY BUILDINGS, BY MAIN ROAD. IT'S CREATED AN "UNDERSPACE" CLOSE TO THE RIVER AND UNDER **PLATFORM**. KEEP THE LANDSCAPE AND NATURAL SURROUNDINGS, TREES CAN GROW UP THROUGH THE HOLES AND THERE'RE SPACE FOR **GREENERY**.

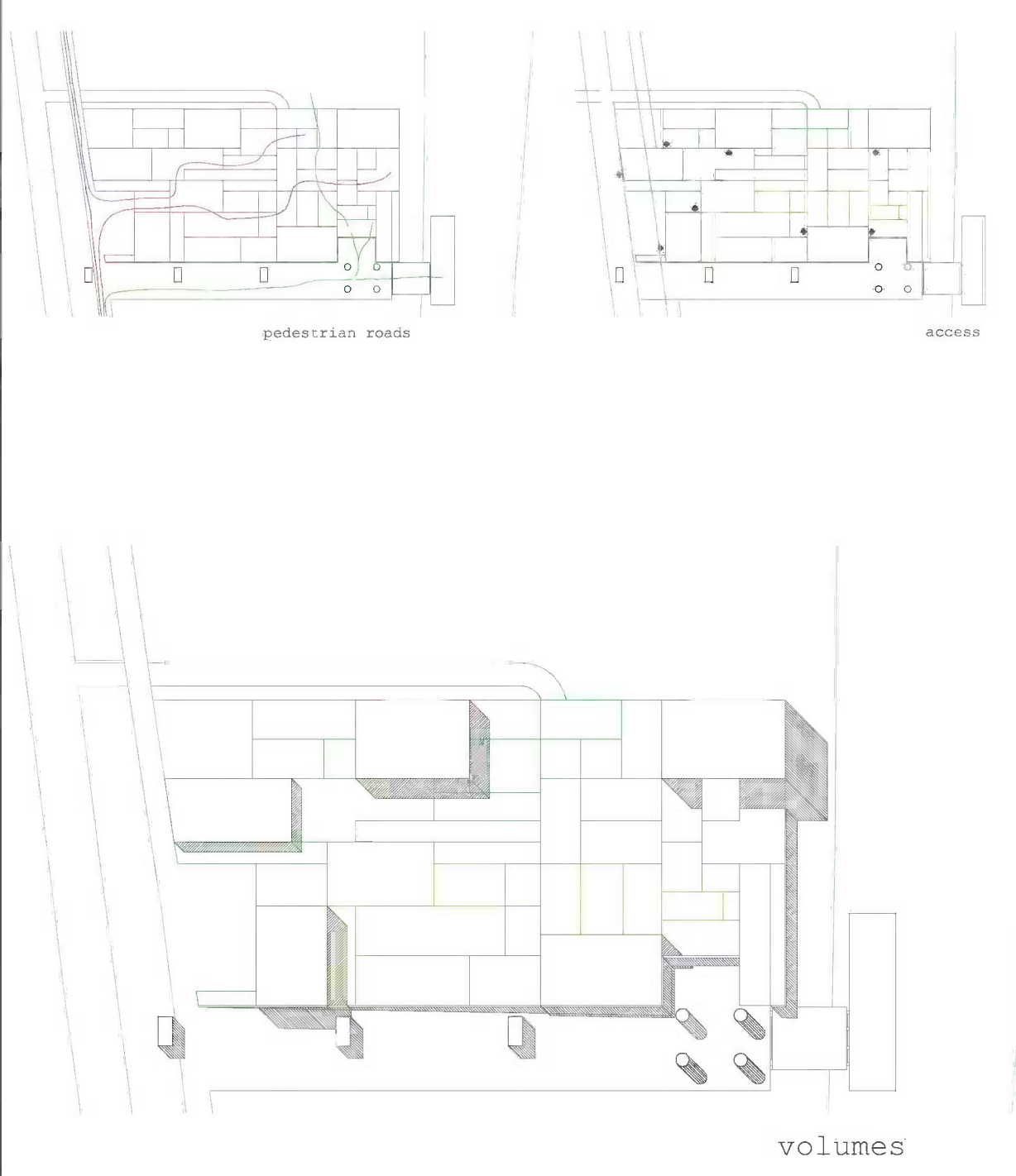
Theo van Doesburg



- Kazuyo Sejima in Toledo (Spain)

MONDRIAN WAY ABOUT GEOMETRIC COMPOSITION IS USED CLEARLY IN THIS DESIGN. THE PLATFORM APPEARS IN THE RIVER THROUGH AS A GREAT EXPRESSION. SPACES' CHOICE IS NOT ALEATORY, IS THINK FOR WALKING AROUND THE BUILDING BY THE PLATFORM AND HOLES. IS BECAUSE OF THAT HOLES THERE WILL BE A NICE LIGHT UNDERPLATFORM AND AVOID A DARK SPACE.

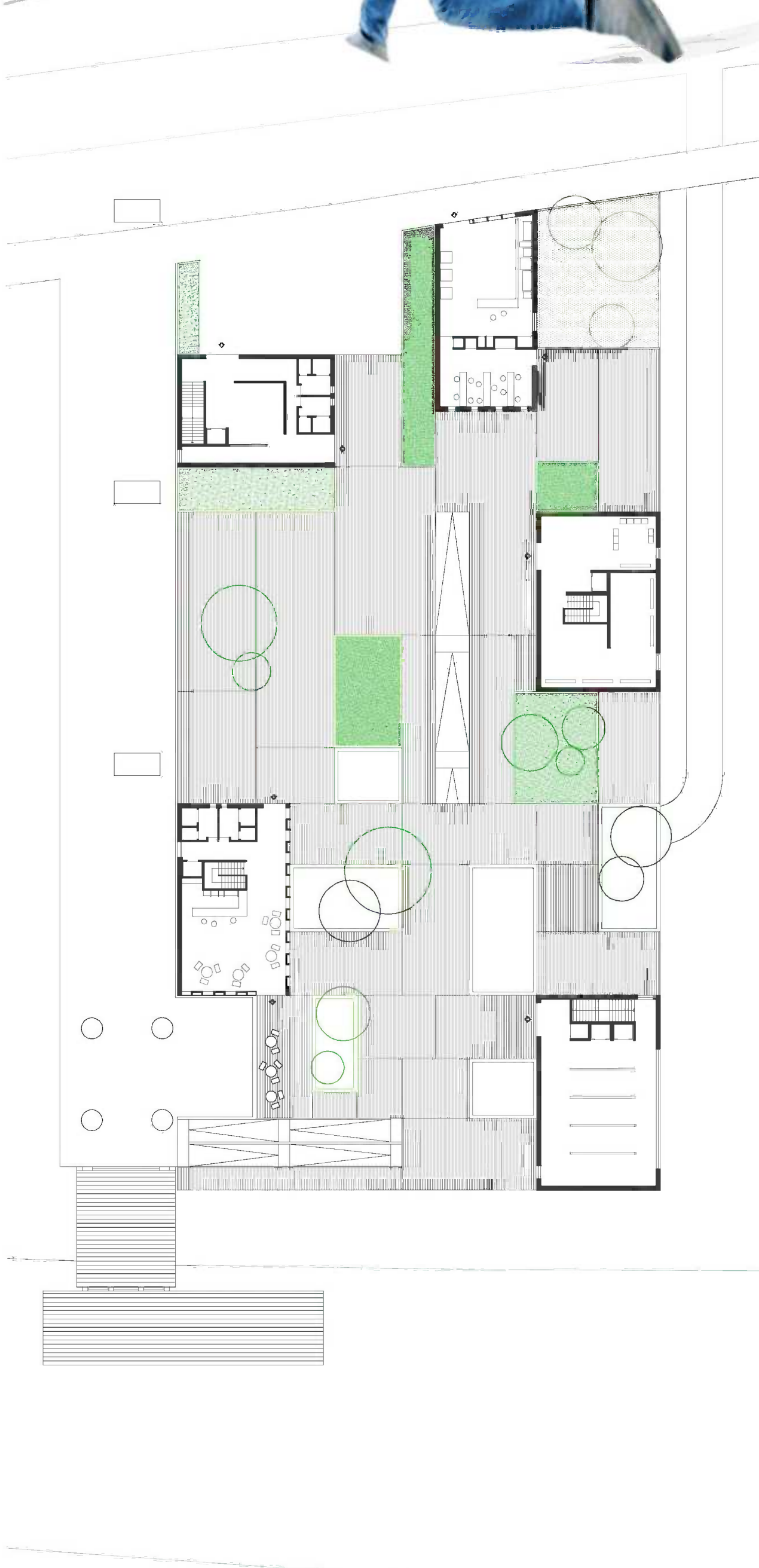
mondrian's concept



011906

IN THIS ANALYSIS WE CAN SEE THE MOST IMPORTANT INFORMATION IN THE COMPLEX, BUILDINGS AND VOLUMES, FUNCTIONS, WALK ROADS, HOLES. THERE'S A CONVICTION OF ALL OF THEM AND GEOMETRIC COMPOSITION THAT YOU CAN SEE FROM SANDBERG.

THERE'S A SHOP BUILDING CLOSE TO THE MAIN ROAD ALSO IS SITUATED THE MAIN ENTRANCE WITH A INFORMATION BUILDING EVEN WITH A "RECEPTION SQUARE". IT'S JOINED TO THE ROAD AND IS CONNECTING BOTH THINGS. TWO BUILDING ABOUT ART, ONE OF THEM ABOUT SANDBERG, RIVER, DEVIN AND COMPLEX INFORMATION. ANOTHER ONE, THE CLOSER ONE TO THE RIVER, WILL BE A TOWER WITH FOUR FLOORS UP THE PLATFORM. FOUR COUNTRIES AND FOUR TEMPORAL EXHIBITIONS OF EACH COUNTRY. FINALLY, WE'VE A CAFETERIA NEAR TO "FOUR PILARS" UPPER PLATFORM, CAN ENJOY THE VIEWS TO THE RIVER AND SANDBERG. UNDERPLATFORM IS SPACE FOR BOATS AND STORAGE.



THE PROGRAM COMBINES ACTIVITIES, MIXING ARTS, WORK, SPORT, COFFEE. THOSE ARE PUTTING HAVING IN ACCOUNT THE SITUATION OF THE BUILDING. CAFETERIA AND EXHIBITION TOWER ARE CLOSE TO THE RIVER, ENJOY VIEWS AS A LIGHTTOWER.

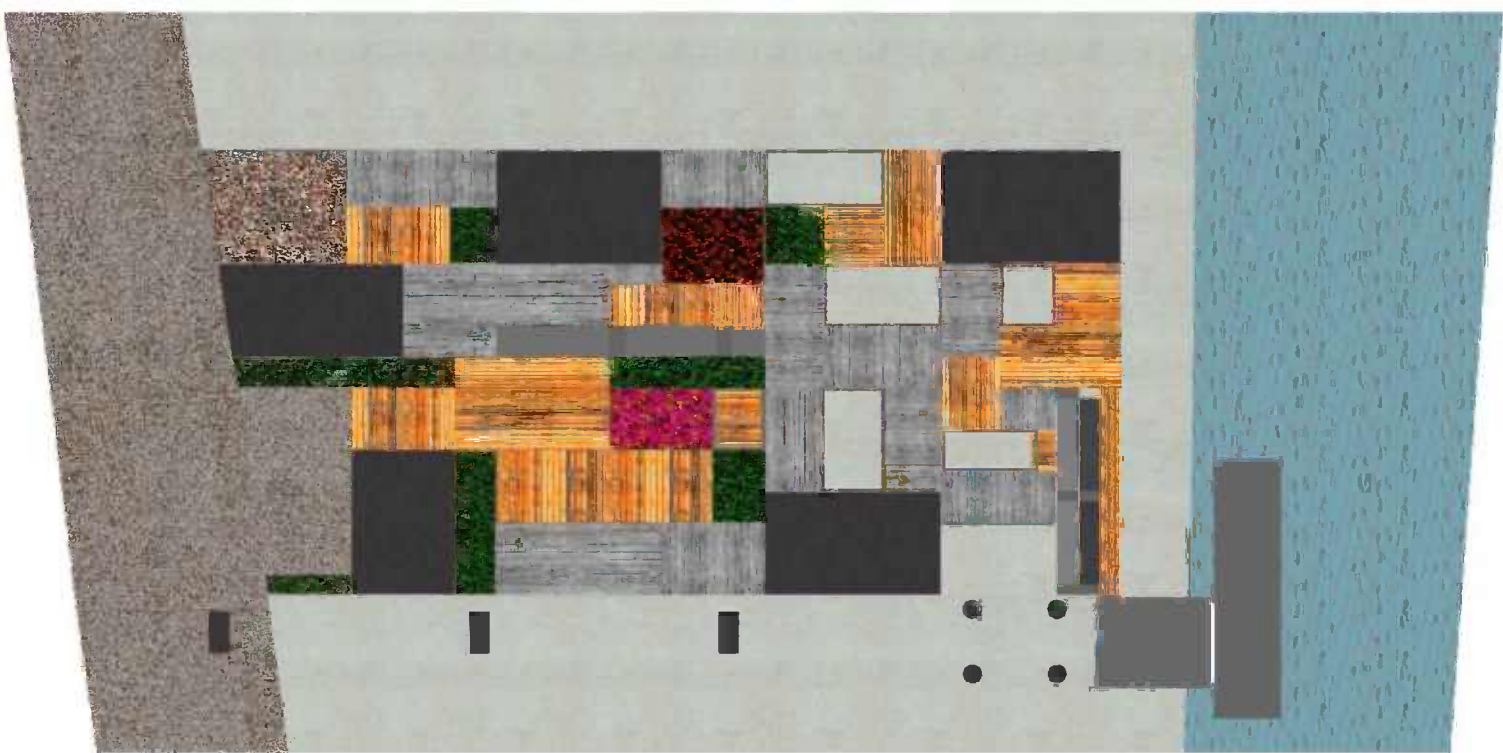
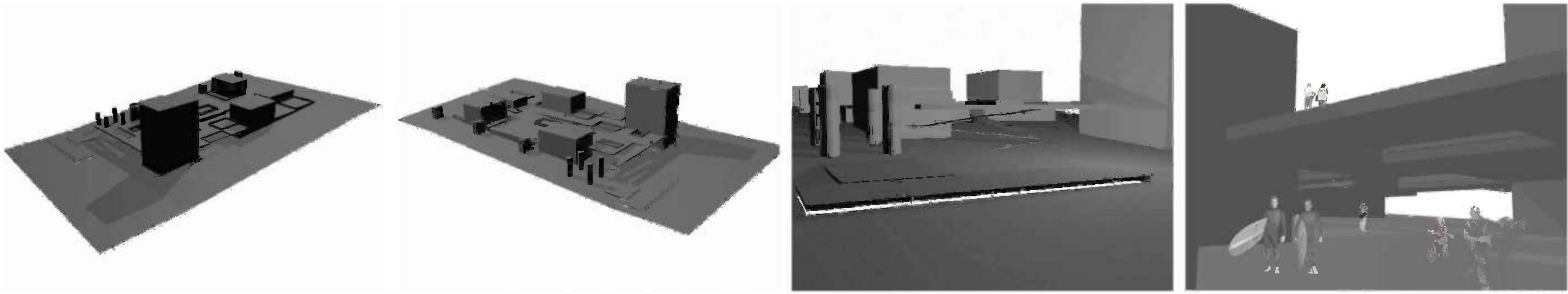
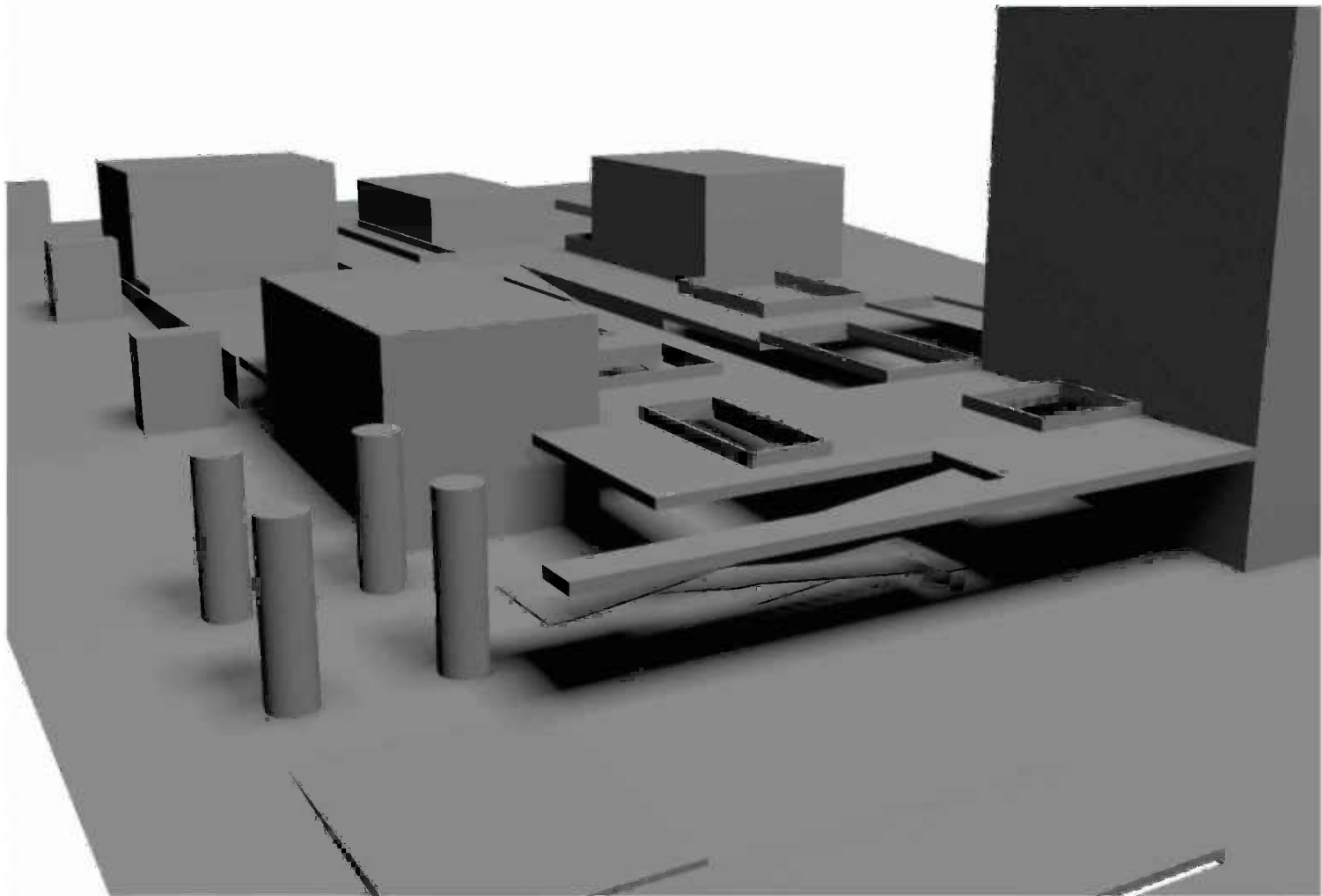
ONE OF THE MAIN THINGS IS TO JOIN PEDESTRIAN ROAD WITH THE RIVER, BY THE PLATFORM AND THE SIDEWALK THAT IS GOING DOWN THROUGH THE PILARS.

MAIN ACCESS IN CLOSE TO THE ROAD, IS DESIGNED A SQUARE AS A RECEPTION PLACE -MEETING POINT-. ABSOLUTELY, THE PLATFORM IS PERFORATED BECAUSE OF THE LIGHT UNDERSPACE. IS POSSIBLE TO LOOK AT BY HOLES. TREES CAN GROW UP THROUGH THOSE HOLES. AND **GREENERY** IS SAVED IN SURROUNDING, BECAUSE OF THE LANDSCAPE IS INCORPORATED IN THE ARCHITECTURE.

ACCESS FOR ALL, UNIVERSAL DESIGN, ALL PLACES ARE ACCESSIBLE FOR DISABLE PEOPLE. BOTH RAMP HAVE ENOUGH STEEP FOR ALL.

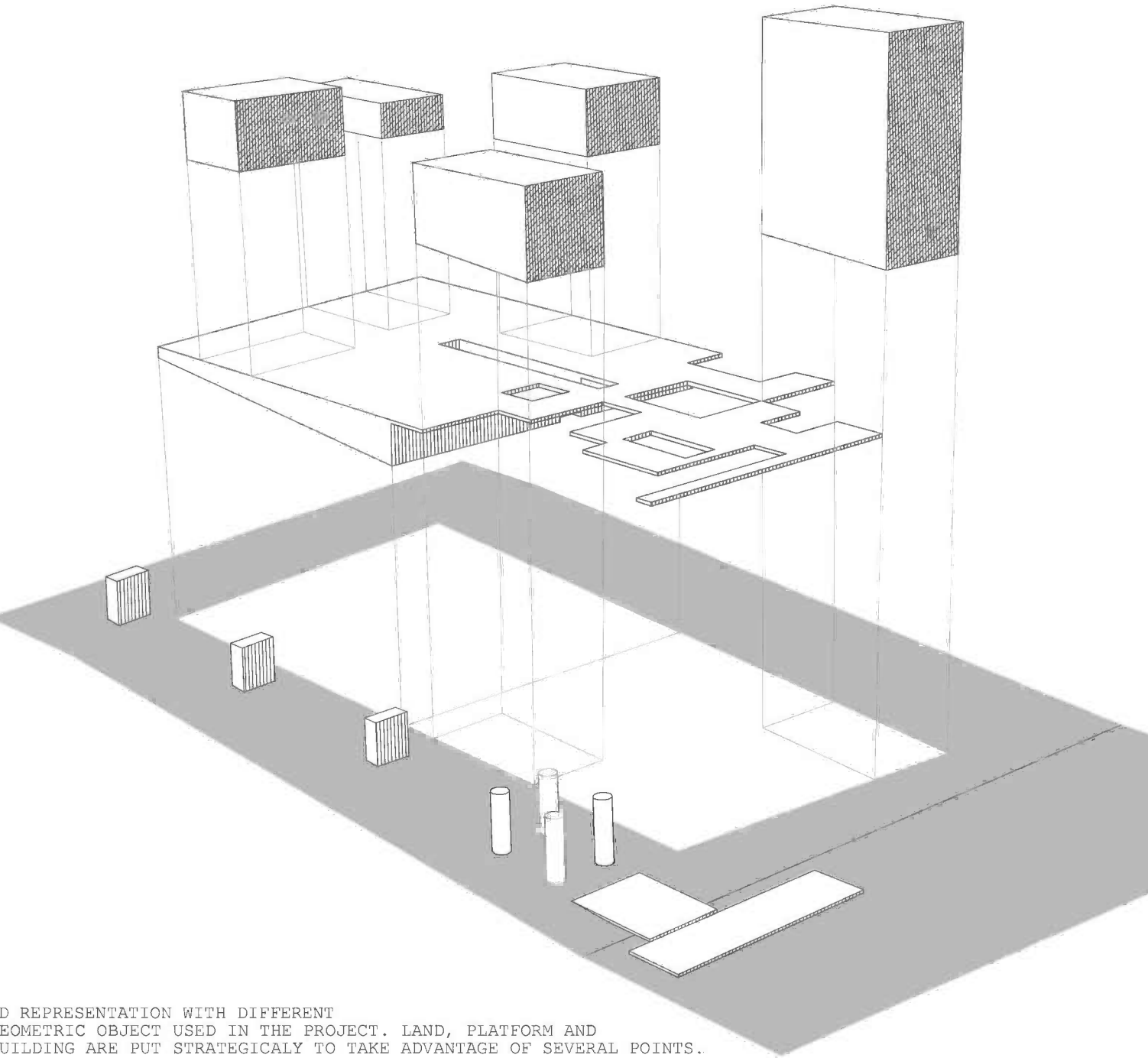
DESIGNED STRUCTURE, USED MATERIALS AND FOUNDATION OF BUILDINGS DEPEND ON THEIR LOCATION IN GIVEN AREA (ABOVE WATER TABLE, AT THE FOOT OF SANDBERG).

STRUCTURES ARE ENVIRONMENT-FRIENDLY AND AIM AT SUSTAINABLE NATURE CONSERVATION AND ENERGY EFFICIENCY.



meeting point

AS A MEETING PLACE, PLACE FOR COMMUNICATION AMONG PEOPLES MUST NOT LET A PASSER-BY INDIFFERENT; ITS APPEARANCE, ARCHITECTURAL SOLUTION AND MISSION SHOULD BE HIGHLY INVITING. ITS BECAUSE OF THE MATERIAL THAT ARE USED HERE.



3D REPRESENTATION WITH DIFFERENT GEOMETRIC OBJECT USED IN THE PROJECT. LAND, PLATFORM AND BUILDING ARE PUT STRATEGICALLY TO TAKE ADVANTAGE OF SEVERAL POINTS.



CONCRETE MAKES DIFFERENT SHAPES IN THE PLATFORM. ITS COMBINED COLOURS, LIGHT AND SHADOWS

WOOD IS USED IN TWO DIRECTIONS AS CONCRETE, THEY'RE COLOCATED FOR PLAYING WITH SPACES

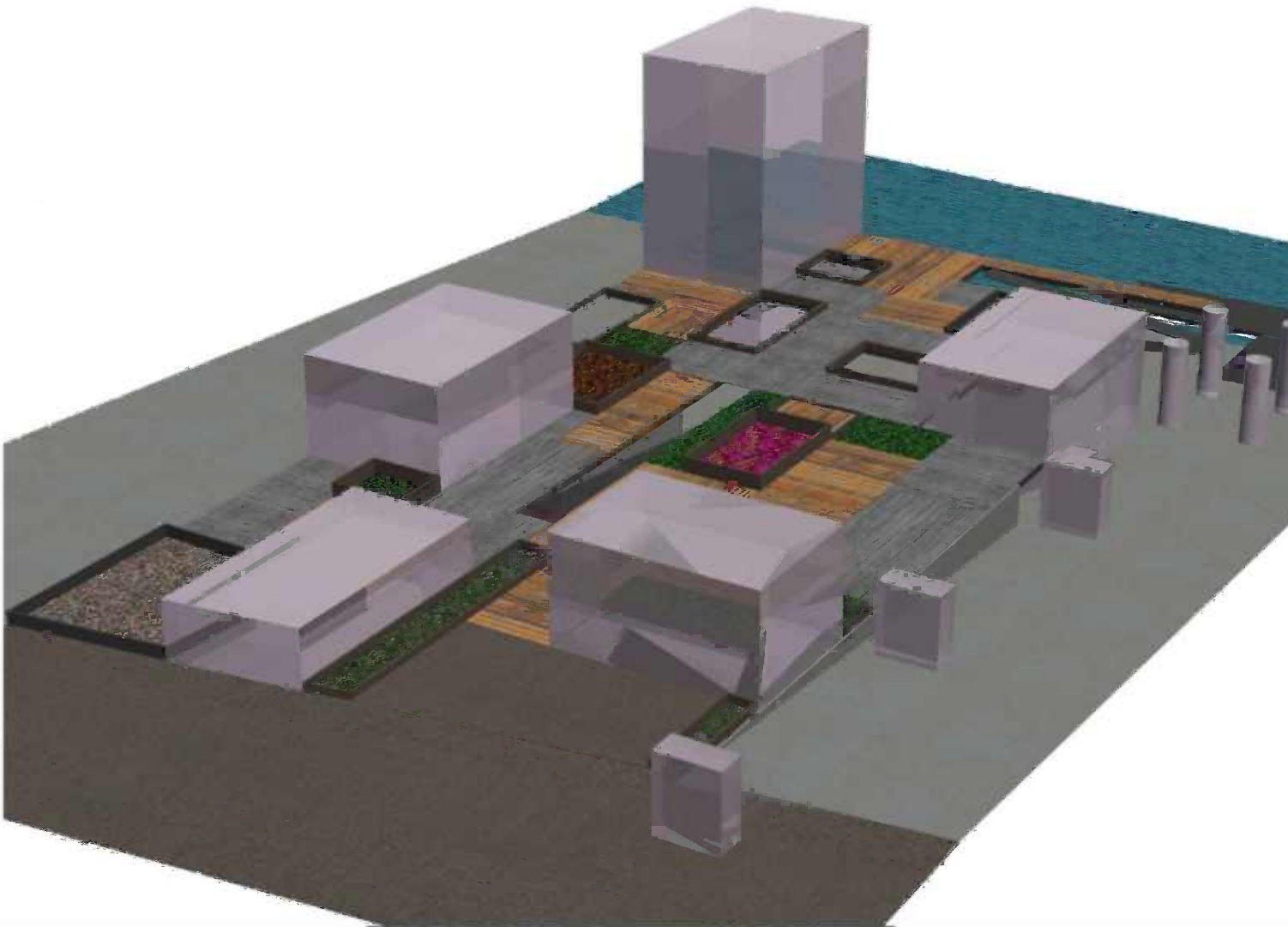
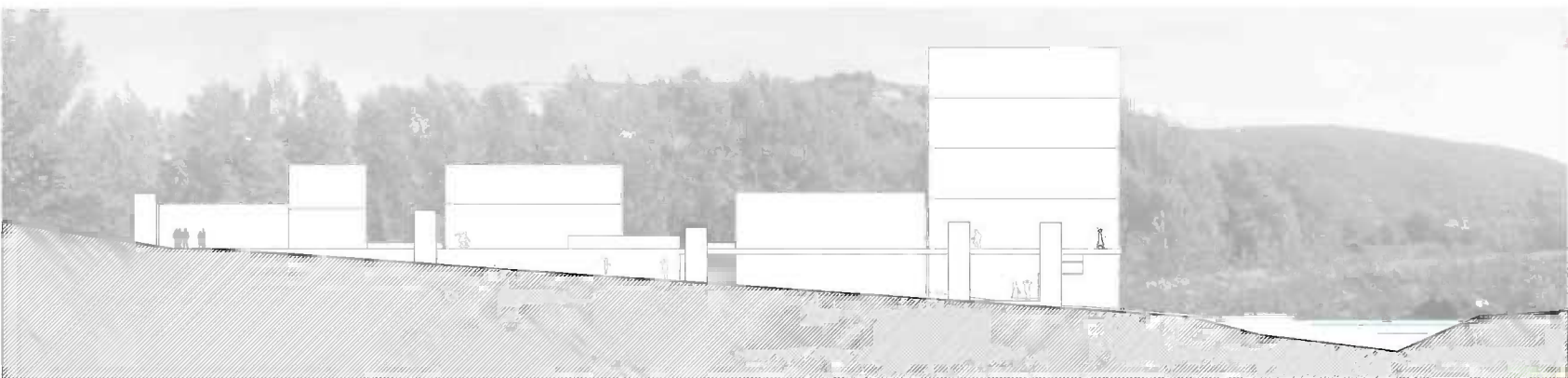
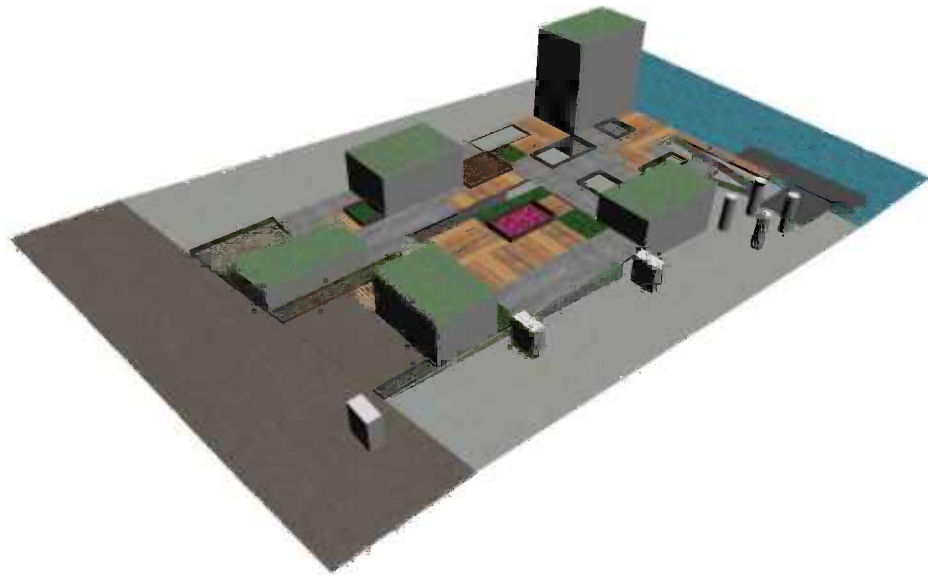
VARIOUS KIND OF STONES, LIKE NATURAL ELEMENTS, CAN SPLIT SPACES FOR WALKING

GREEN WILL ONE OF THE MOST IMPORTANT COLOURS IN THE PROJECT, GRASSES, TREES, GREENERY...

FLOWER APPEAR AS SPECIAL ELEMENT, SHINE COLOURS WILL BE INTERESTING IN THE SPACE

ANOTHER KIND OF FLOWER, ACCORDING TO THE COLOURS USED IN THE COMPLEX

WATER AS NATURAL ELEMENT. ITS COMBINED WITH CONCRETE, GLASS AND WOOD.

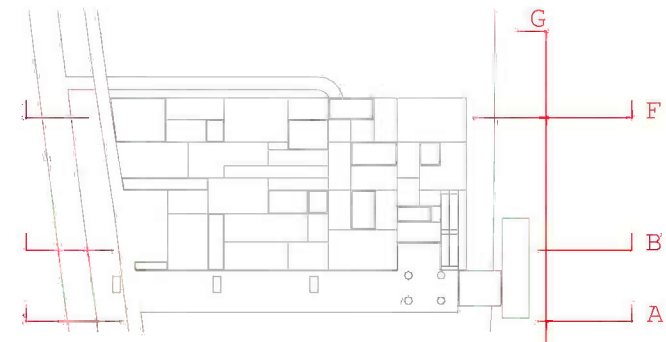
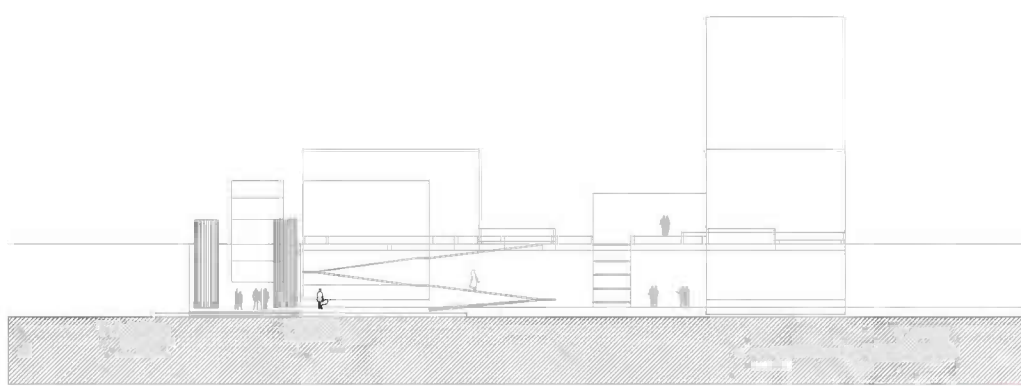


THE COMPLEX'S COMPOSITION IS POSSIBLE TO SEE FROM SANDBERG. MONDRIAN'S WAY IS IN THE VIEW TOP. BUILDING'S TOP ARE DESIGNED AS GREEN TERRACE, ONLY ACCESSIBLE FOR PEOPLE IN TWO BUILDING, THE TWO CLOSER TO THE RIVER, CAFETERIA AND TEMPORAL EXHIBITION.

PEOPLE GET TOP OF BUILDING BY STARIS, FROM HERE ENJOY VIEWS AND PERFECT LOCATION AS TOP OF TREES.

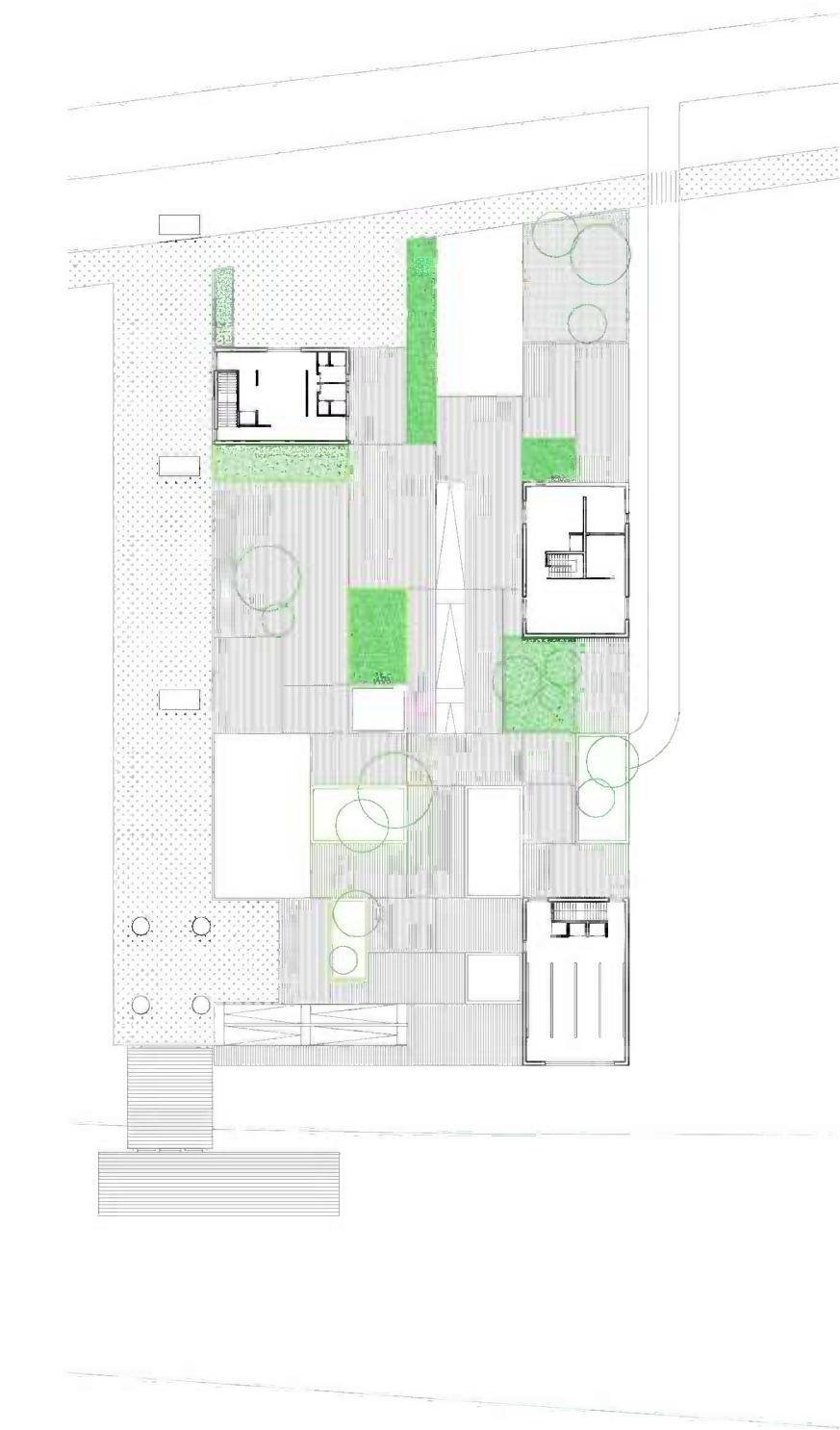
THERE ARE DIRECT ACCESS FOR BOATS FROM THE RIVER, THE MAIN WAY FROM ROAD IS CONNECTED WITH THE WHARF.

UNDERPLATFORM SPACE IS ILUMINATED WITH NATURAL LIGHT BY HOLES, AT THE SAME TIME PEOPLE CAN GET UP BY TWO RAMPS FROM THE FLOOR.



LONGITUDINAL AND CROSS SECTIONS 1/500

THIS REPRESENTATION PERMITES GET THE SANDBERG'S ATMOSPHERE, SEVERAL SECTIONS ARE SPEAKING ABOUT THE PROJECT, VOLUMENS, HOLES AND SPACES BETWEEN BUILDINGS.



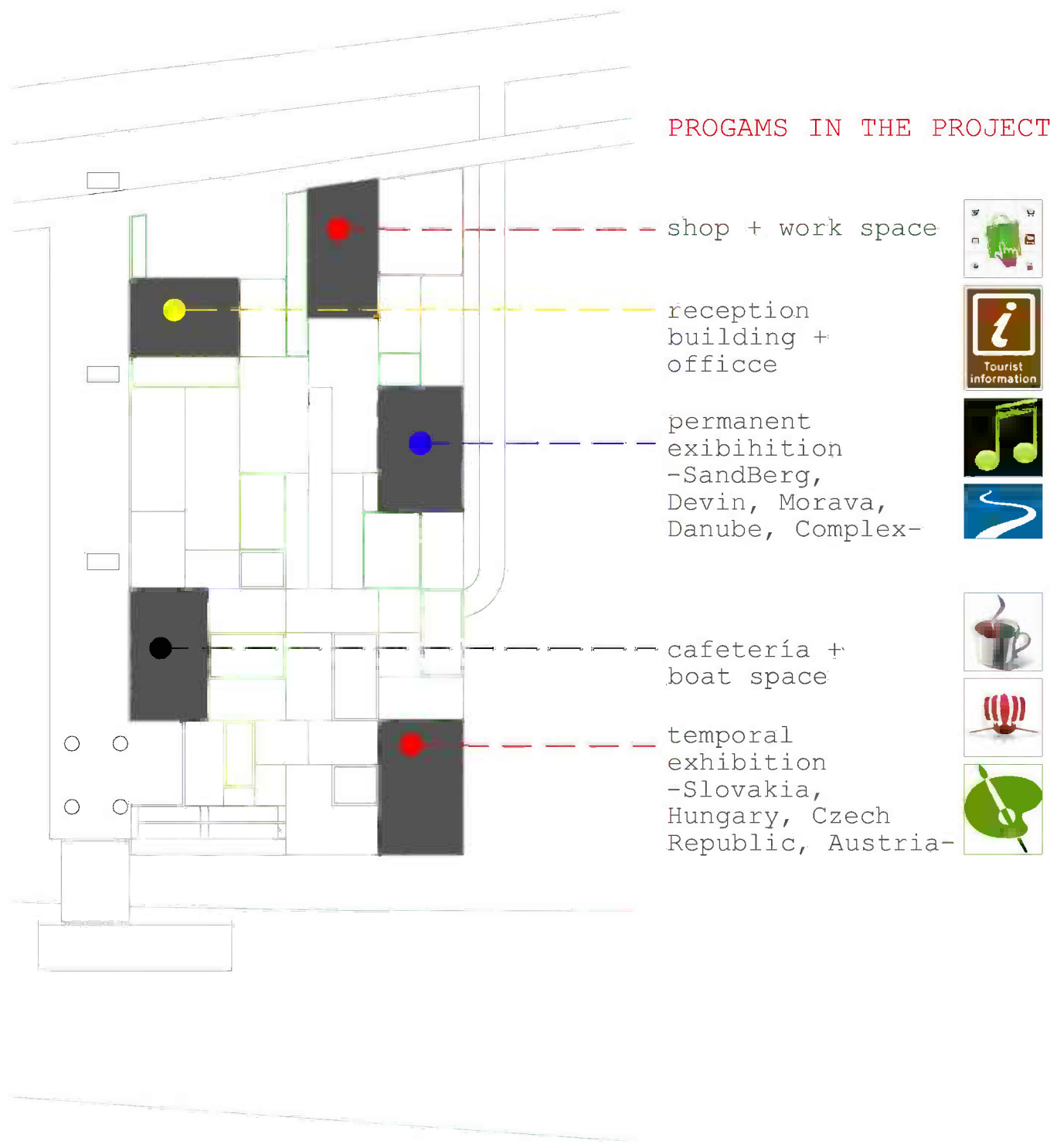
plat+2 1/750



plat+3 1/750



plat+4 1/750



platform 1/750

PROGAMS IN THE PROJECT

- shop + work space
- reception building + office
- permanent exhibition -SandBerg, Devin, Morava, Danube, Complex-
- cafeteria + boat space
- temporal exhibition -Slovakia, Hungary, Czech Republic, Austria-

