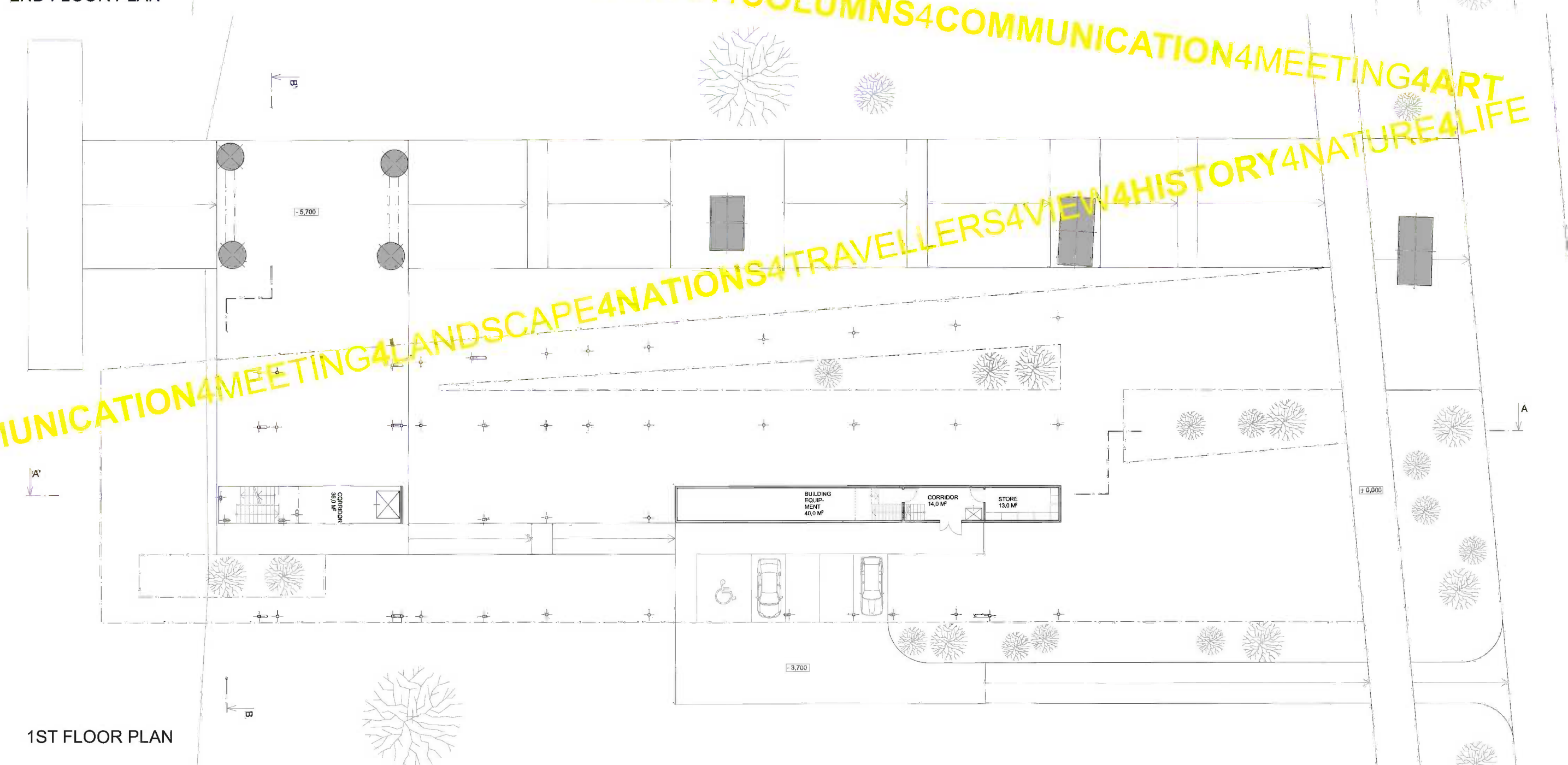
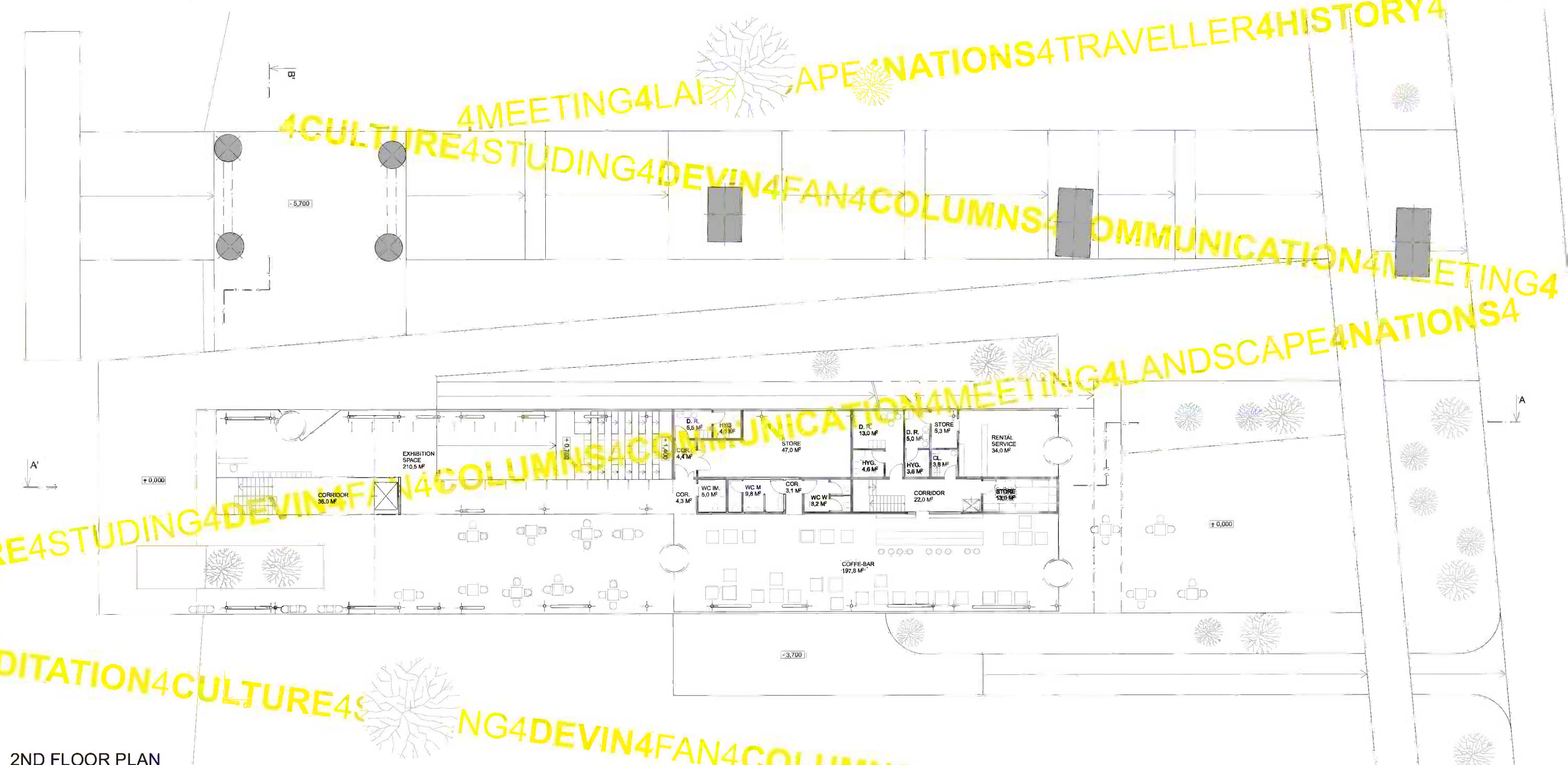
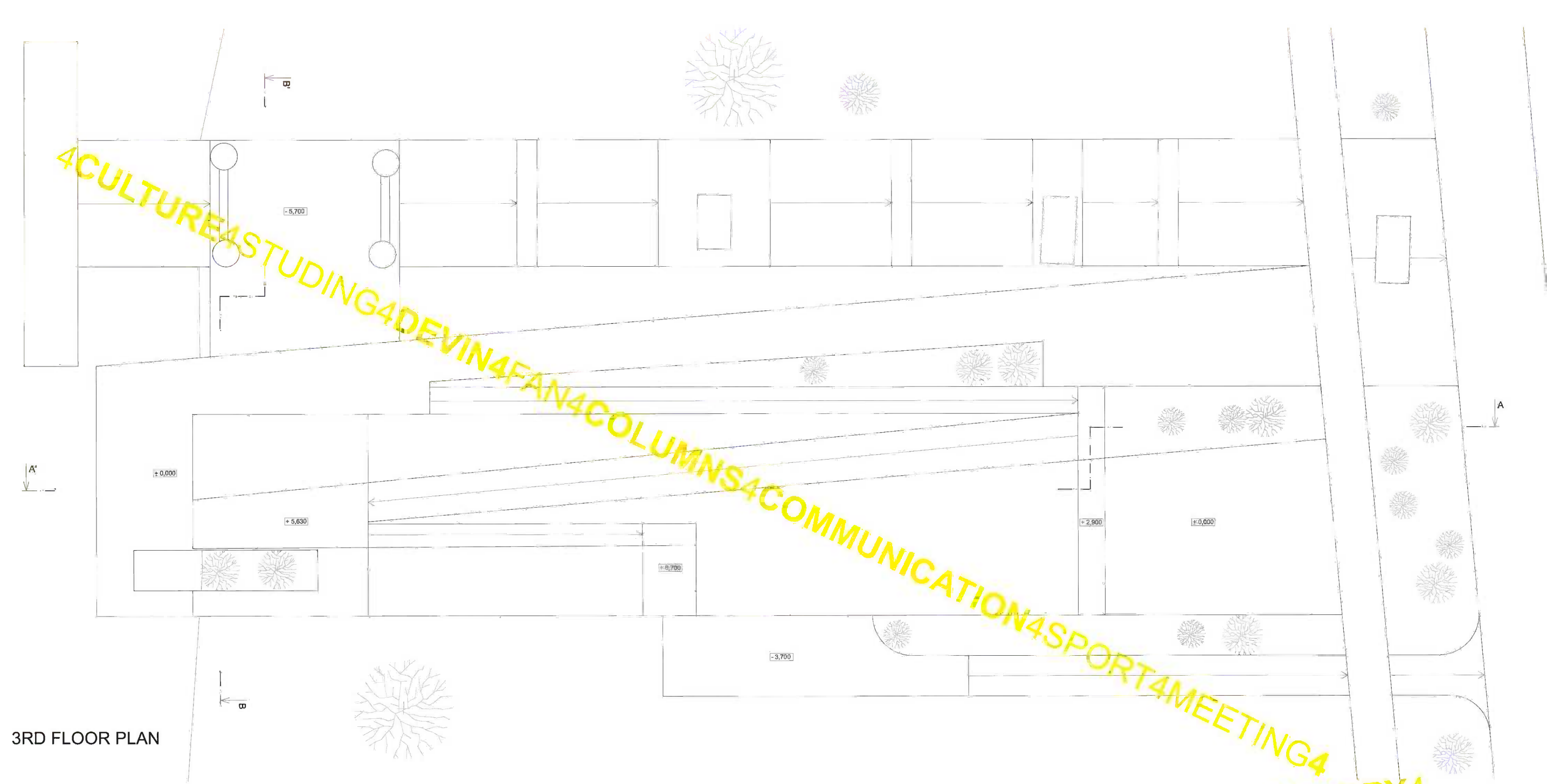
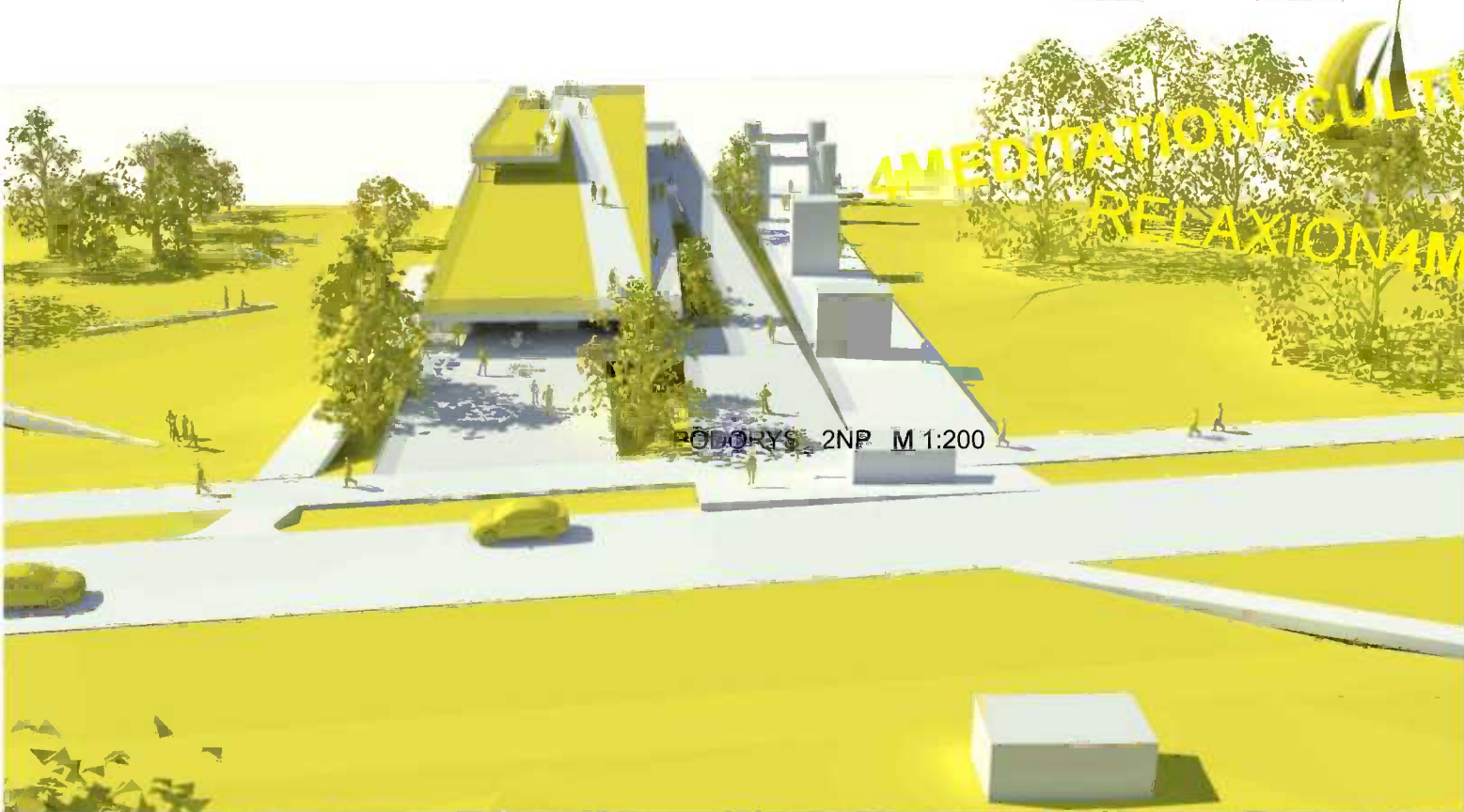




MEETING POINT_4 SANDBERG CONTINUUM_4_S



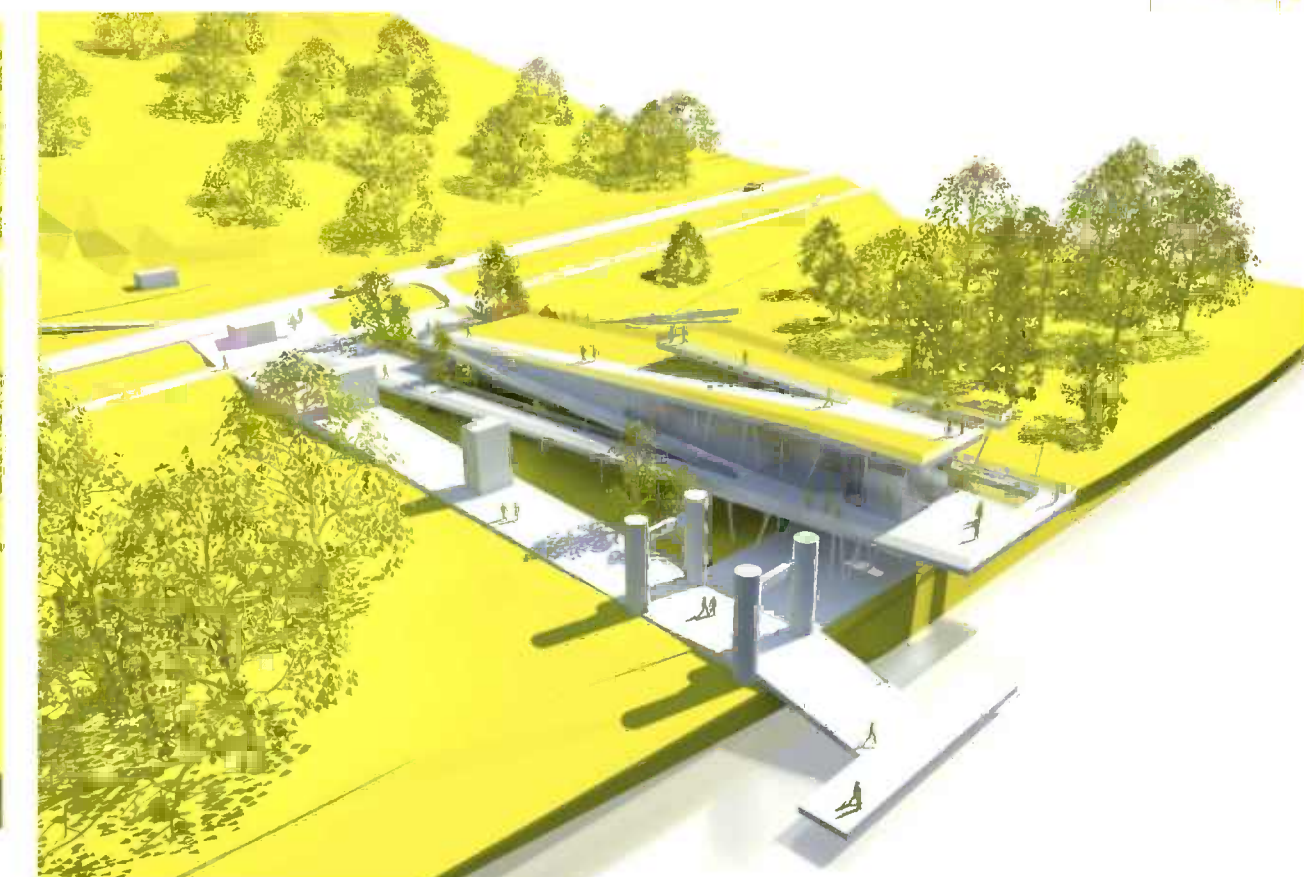
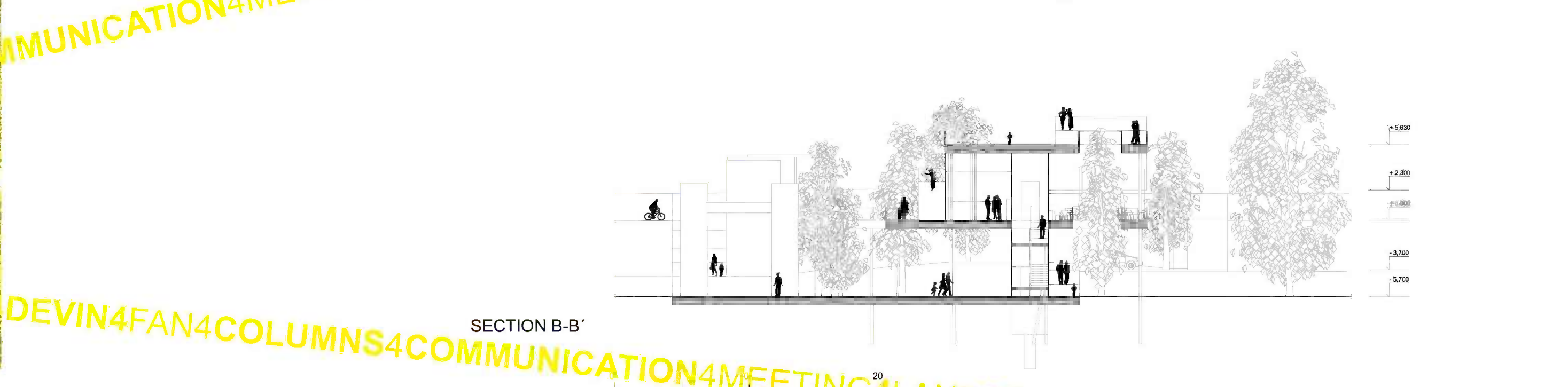
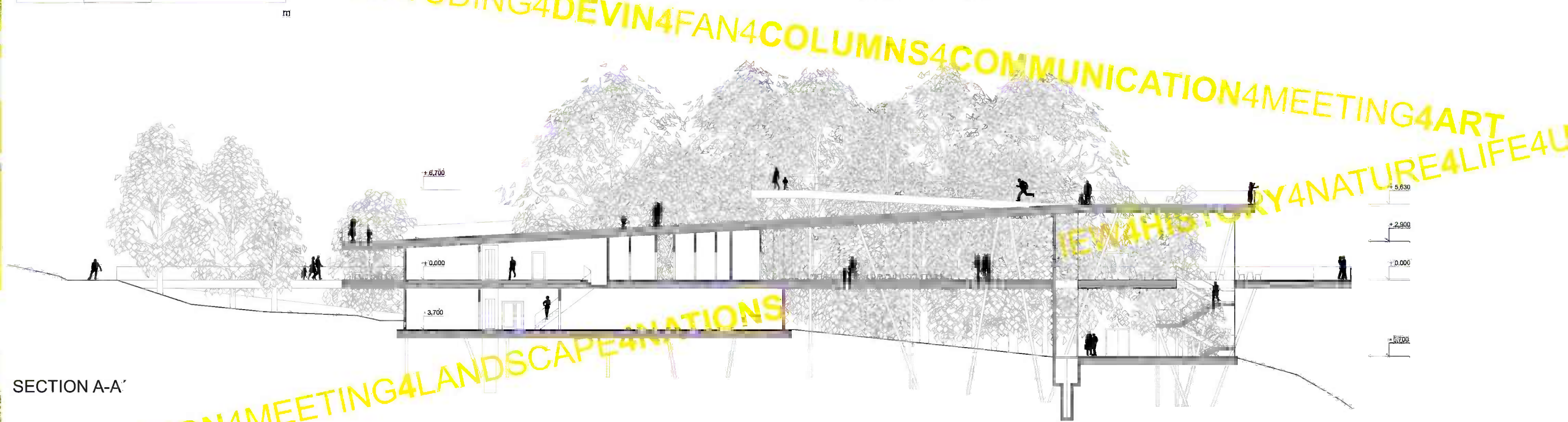
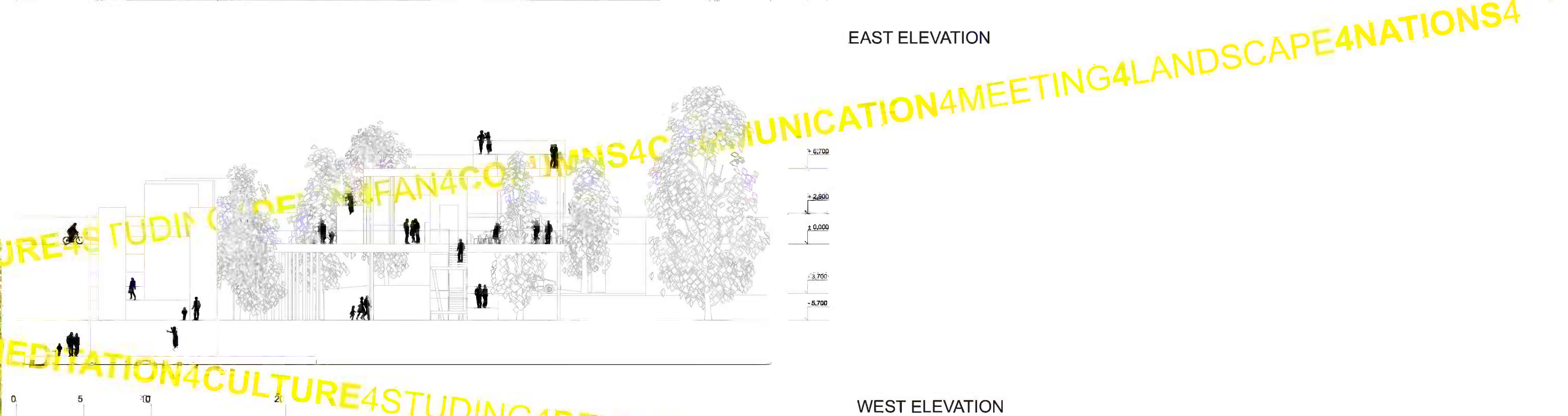
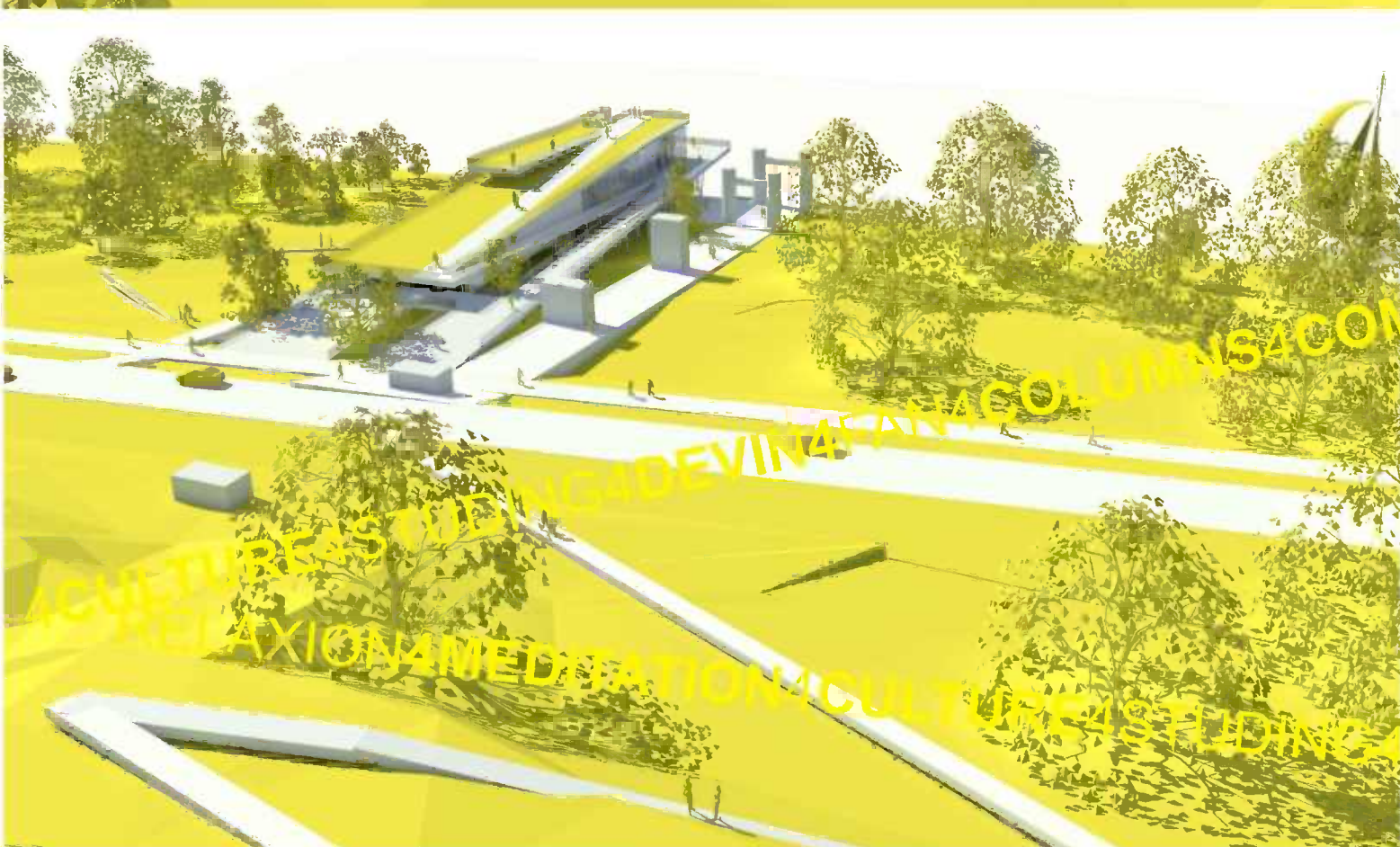
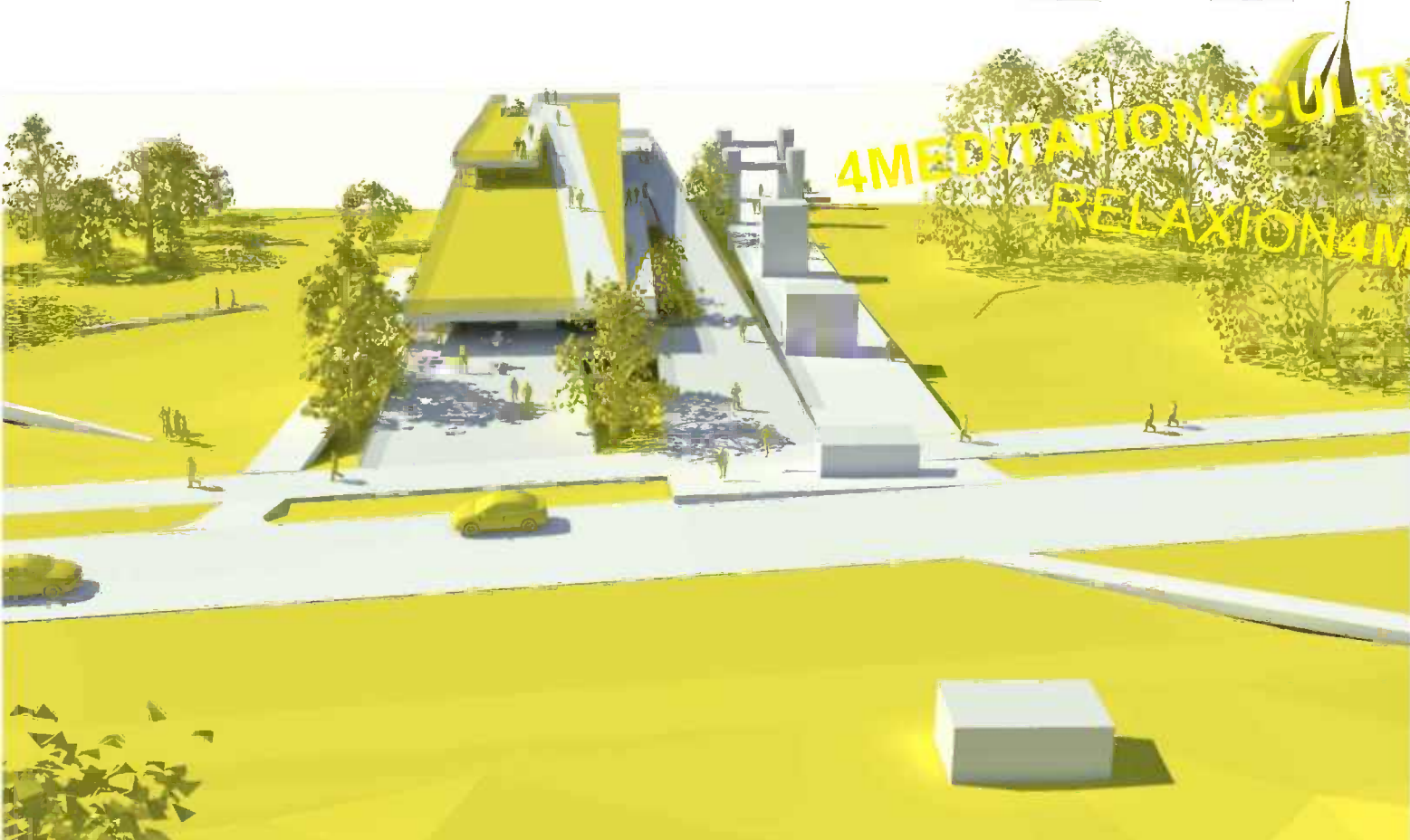
PHILOSOPHY OF A SOLUTION IS BASED ON A VISUAL CONNECTION OF INTERIOR AND EXTERIOR, ON A CONTINUOUS INTERCONNECTION OF SANDBERG WITH A DESIGNED BUILDING AND ON A CONTINUITY OF THE ORIGINAL COLUMNS WITH A SUBSTANCE OF THE NEW CONSTRUCTION IN THE FORM OF SLANT LINES AND PLANES IN A NATURAL WAY WITHOUT ANY CONTRASTS WITH THE GREENERY AND NATURAL PEDESTRIAN PATHS TO THE TOP OF SANDBERG. THE SYMBOLOGY IS HIDDEN IN 4 PLANES, WHICH INTERSECT EACH OTHER AND ARE CREATING ONE UNIT. THE PLANE BOWED DOWN THROUGH THE COLUMNS TO THE MORAVA RIVER. THE PLANE DISCONNECTED OVER THE WATER LEVEL. THE PLANE RISEN ABOVE THE LEVEL OF ORDINARY LIFE. AND THE PLANE TRIED TO REACH SANDBERG IN WHOLE ITS BEAUTY AND UNIQUENESS.

ARCHITECTURAL SOLUTION THE DESIGNED BUILDING IS CONNECTION OF RAMPS CONNECTED THE VARIOUS LEVELS OF THE STRUCTURE, SO THE CONTINUITY AND THE FLUENCY OF OPERATIONS IS SECURED. THE OBJECT IS USE FOR 4 VARIOUS PURPOSES. COFFEE-BAR, RENTAL SERVICE OF SPORT EQUIPMENT, EXHIBITION SPACE, SCENIC OVERLOOK, THAT ENCOURAGE EACH RECIPROCALLY.

DISPOSITION-OPERATION SOLUTION DISPOSITION OF THE BUILDING IS DESIGNED FOR BROADLY USING OF THE OBJECT WITH SIMPLICITY AND FUNCTIONAL SEQUENCE OF THE OPERATIONS. THE ENTRANCES FROM EAST IS USED FOR COFFEE-BAR AND RENTAL SERVICE, THE ENTRANCE TO THE EXHIBITION SPACE IS ORIENTATED TO THE NORTH. THE GENEROUS EXTERNAL TERRACES FOR COFFEE-BAR ARE FROM SOUTH AND WEST. THE BACKSTAGE OPERATIONS IS CONCENTRATED IN A LOADBEARING CORE.



MEETING POINT_4 SANDBERG CONTINUUM_4_S



MATERIAL SOLUTION. THE LOAD BEARING CORE IS MADE UP OF REINFORCED CONCRETE, COLUMNS ARE FROM CONCRETE HARDEN BY STEEL PROFILES. ALL PARTITIONS AND CEILINGS ARE MADE UP OF YTONG. THE CONSOLE ABOVE THE RIVER IS ALSO FROM REINFORCED CONCRETE.