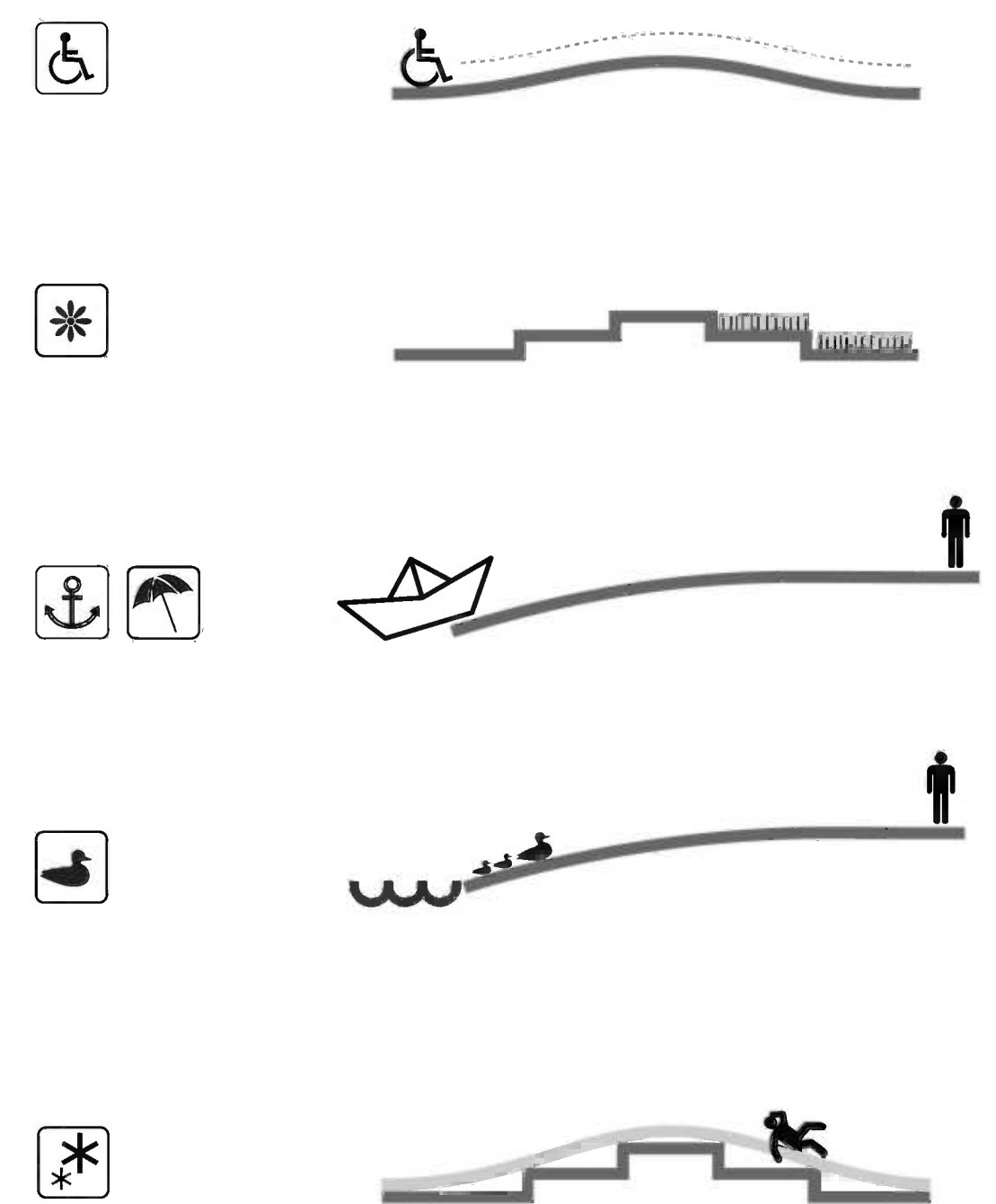
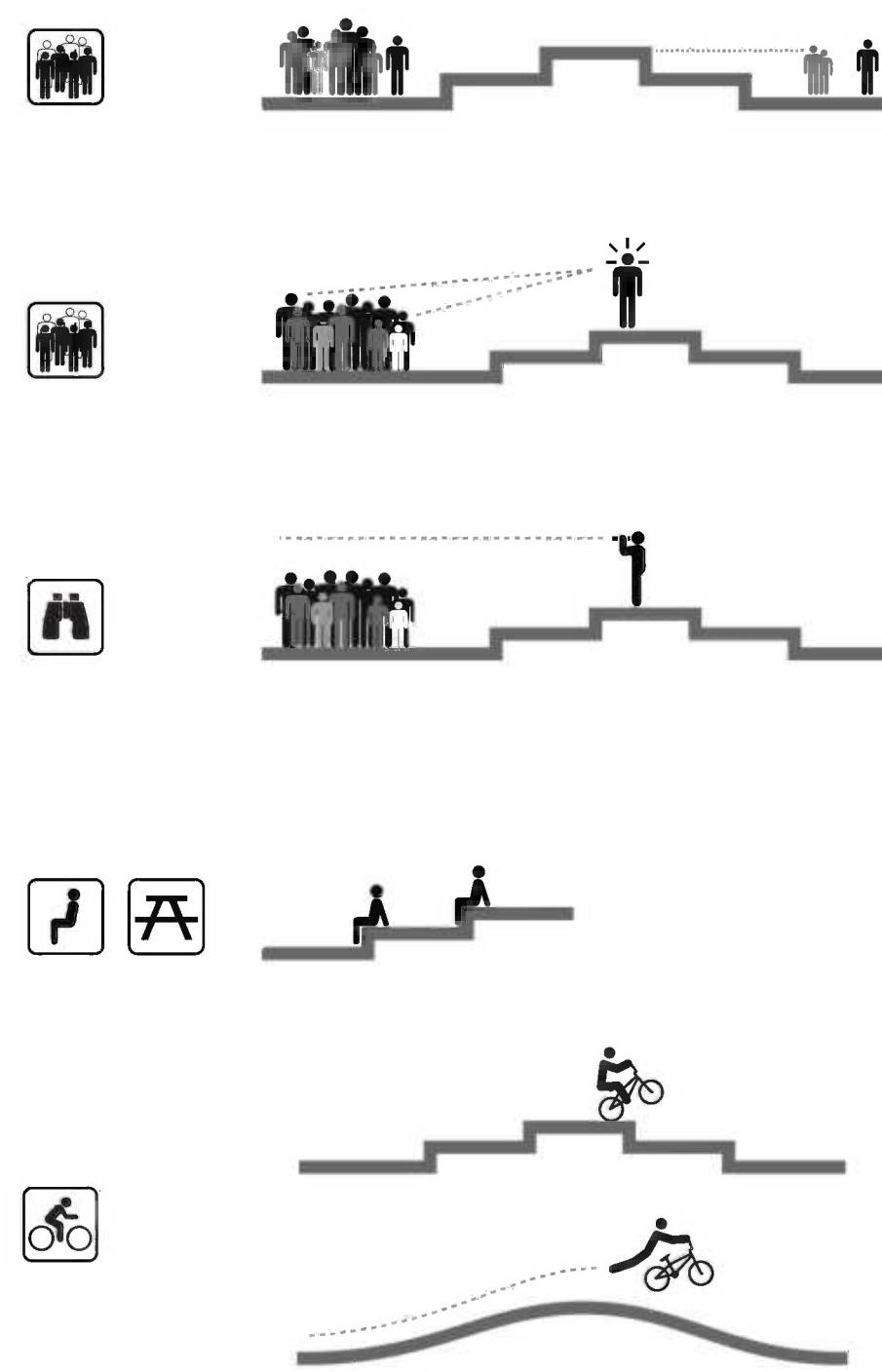
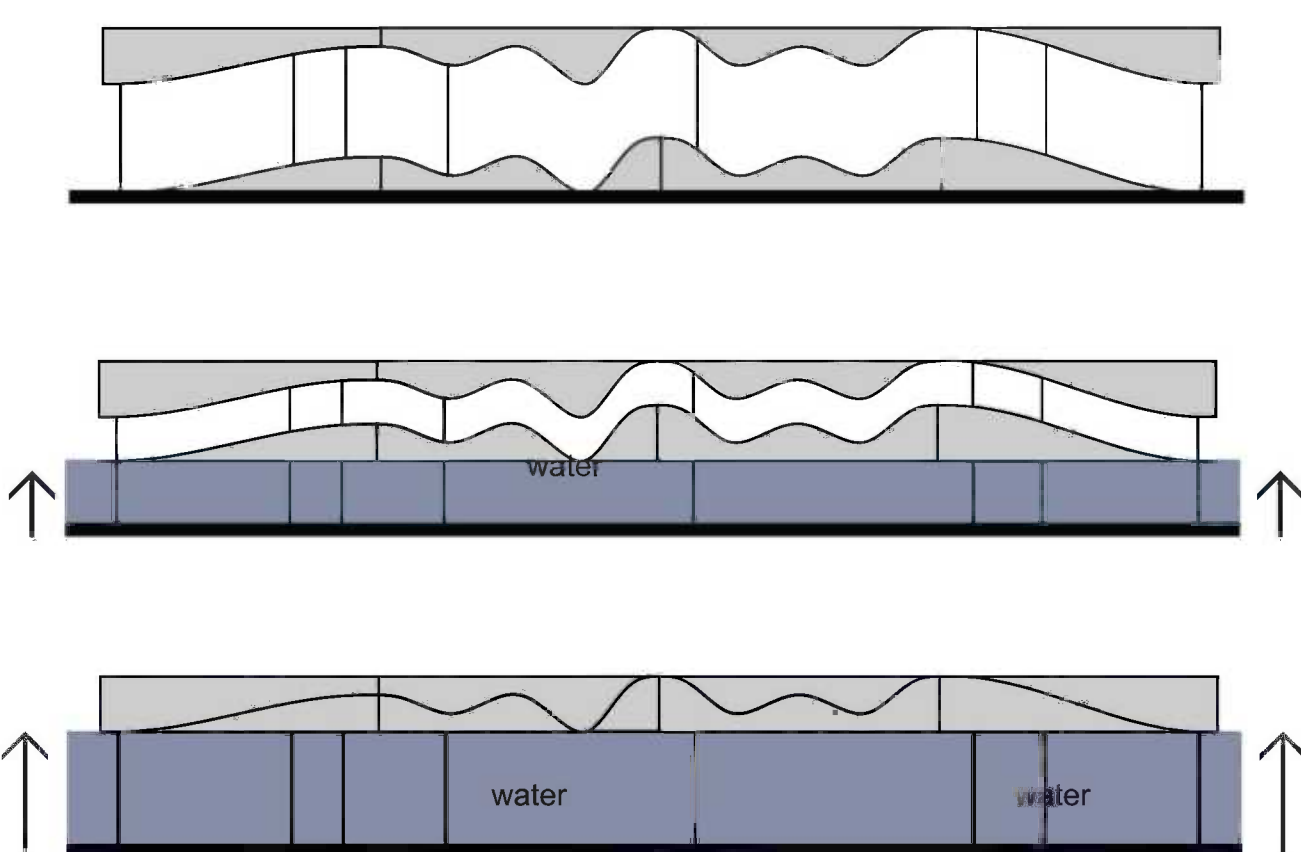
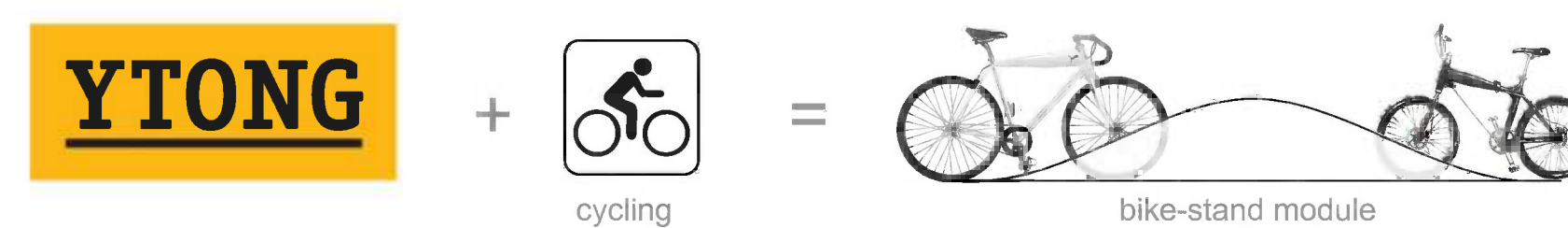


742874

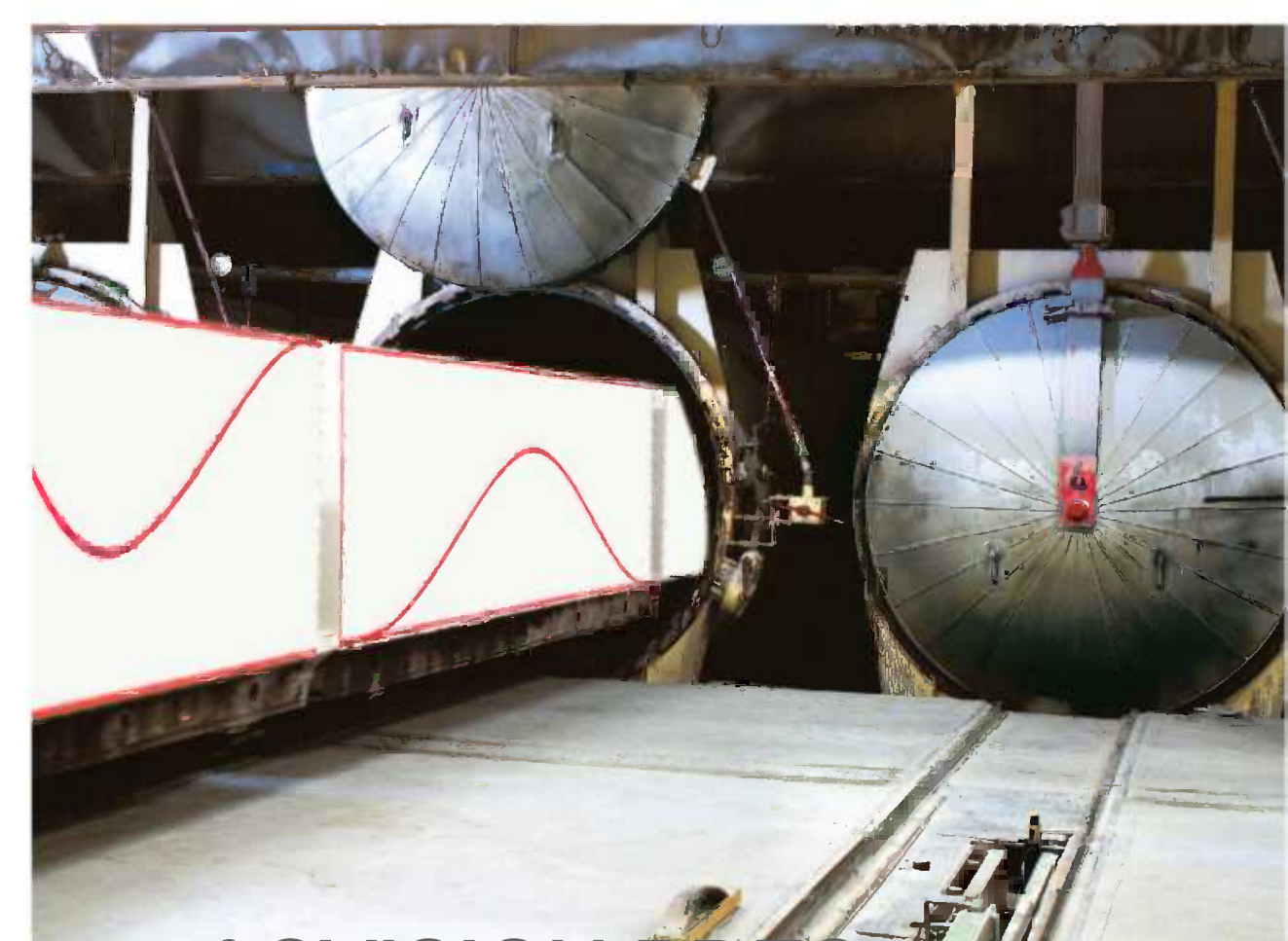


The building is conceived as an autonomous open occupancy not needing any maintenance. The artificial landscape serves as opportunity for sports (cycling, in-line, free style, football, badminton, frisbee, canoing, fishing) cultural events (open air theatre, reading, archeological exhibits) and relax (sitting, laying, observing the nature, meditation).



The diagram illustrates the effect of a vertical force F' applied to a rectangular plate. The plate is divided into two horizontal sections. The top section has height h' and the bottom section has height h . The total height is $h + h'$. The force F' is applied downwards at the top edge and upwards at the bottom edge. The plate is labeled "YTONG" and "xella".

functions

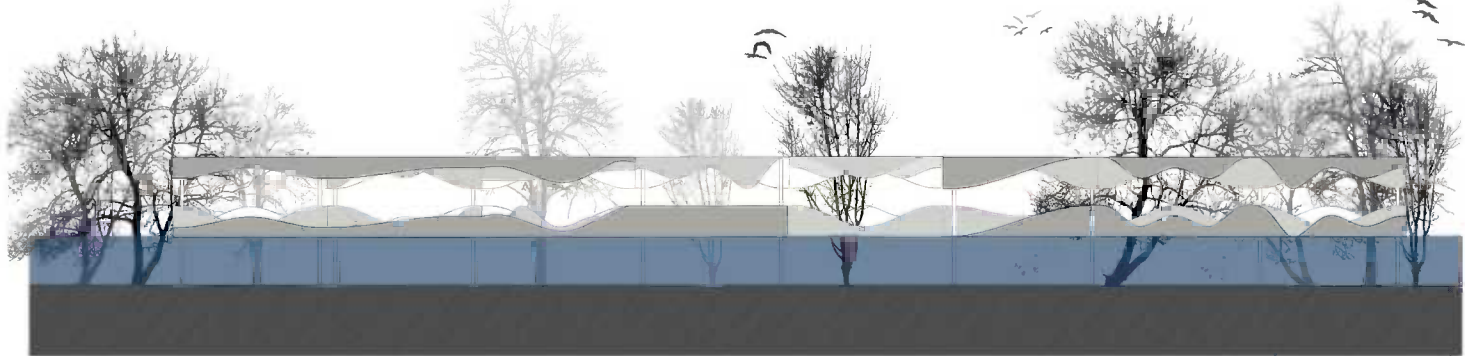


meeting point “mp4” Sandberg

742874



section A



section A - flooding



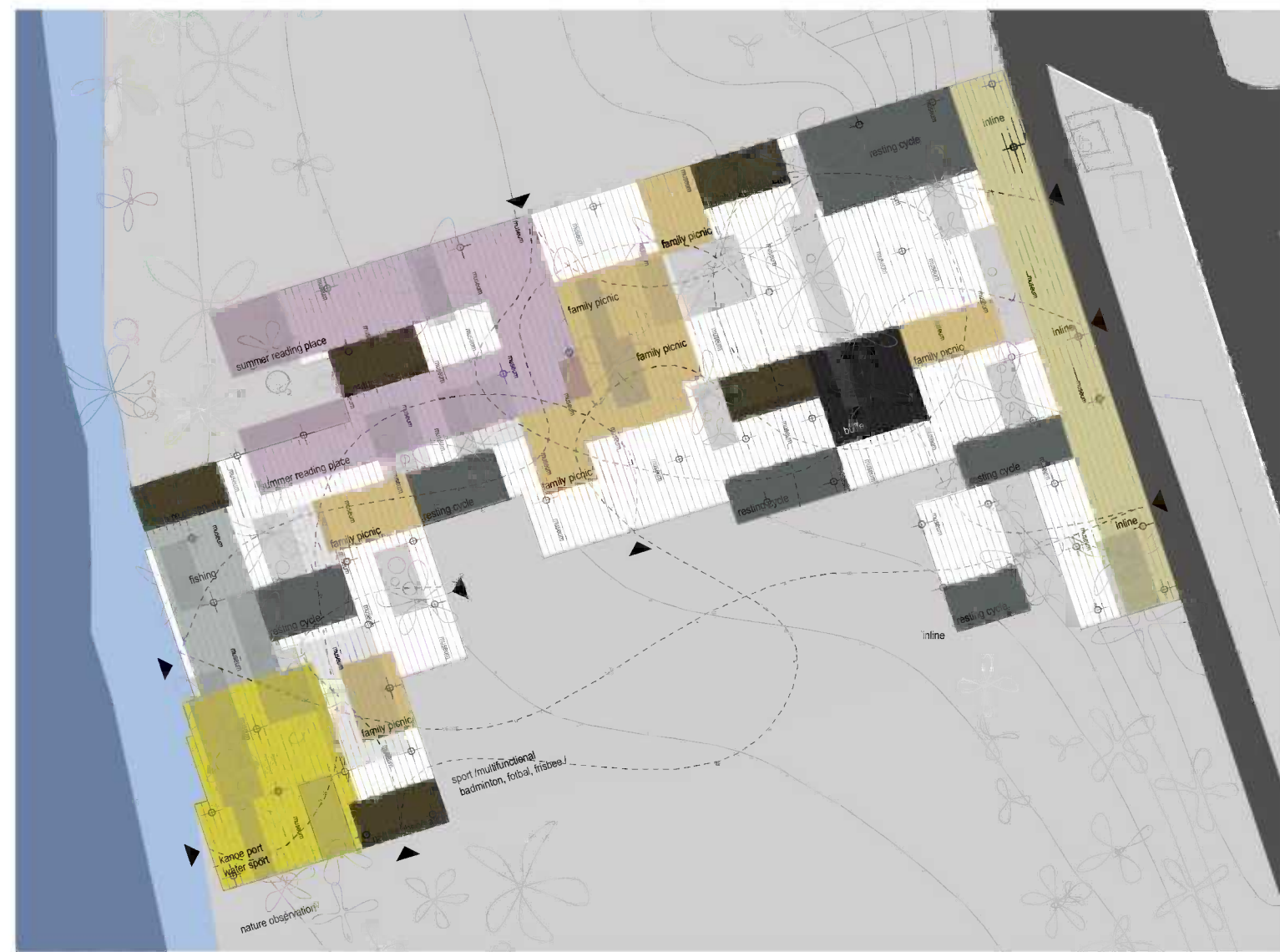
left view



right view



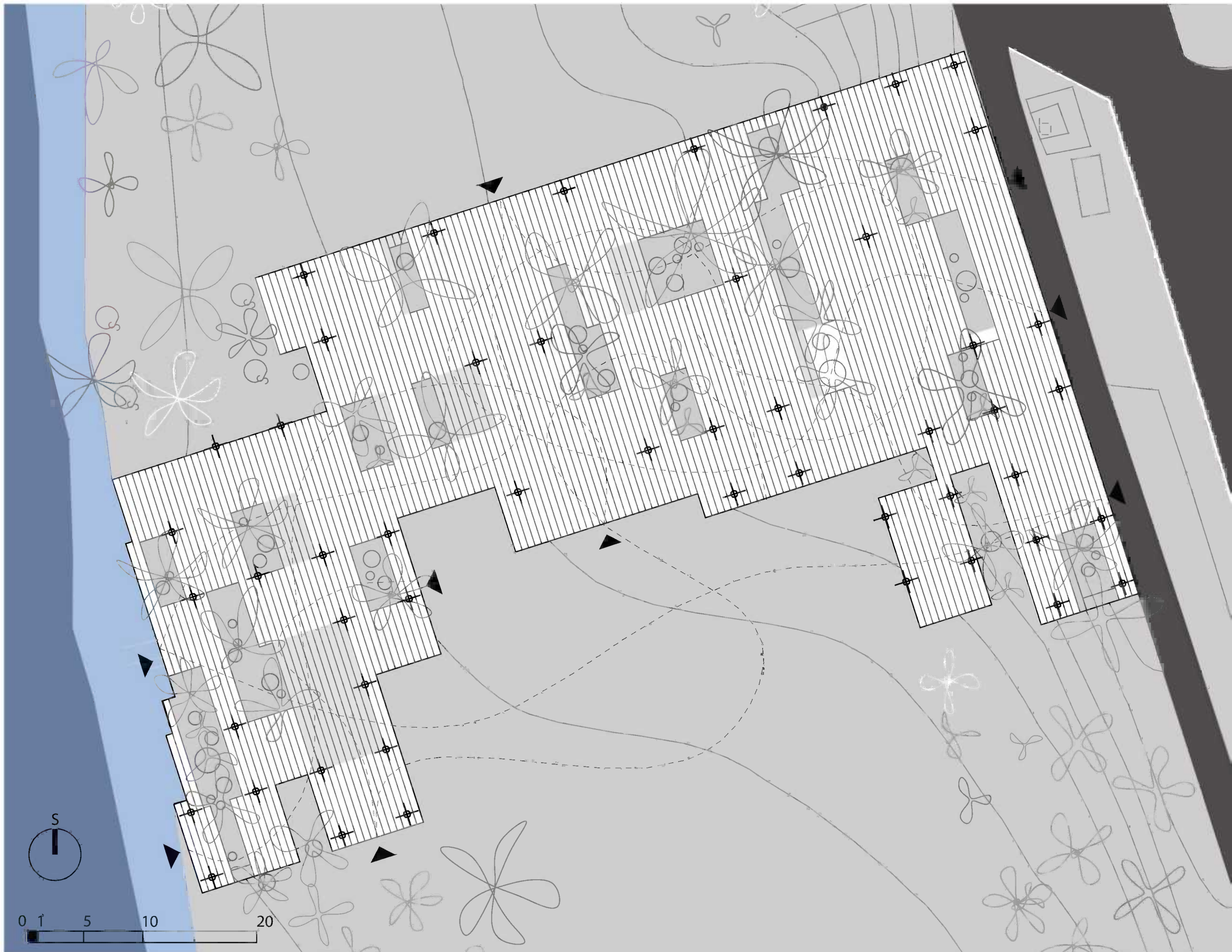
site plan



functional diagram



section B



ground floor elevation



rooftop elevation

