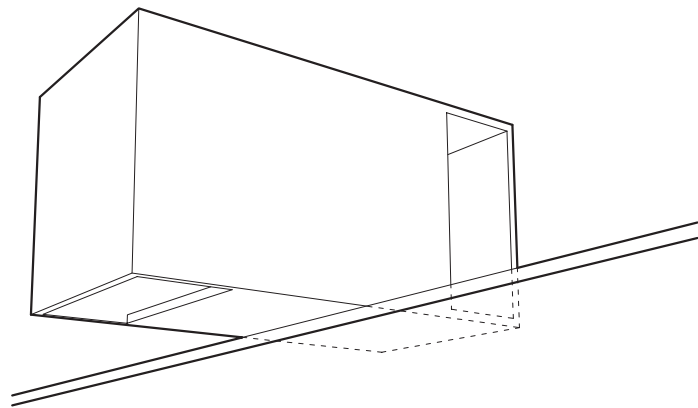
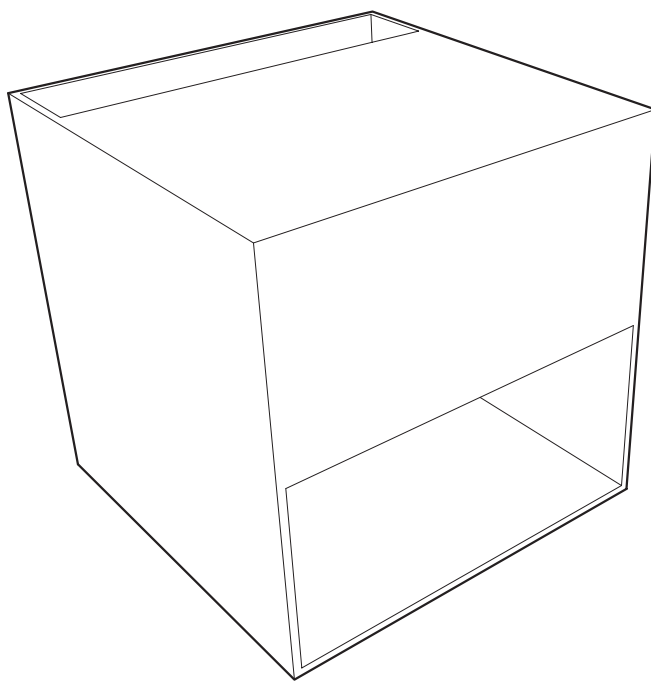


situation environment context 1_500



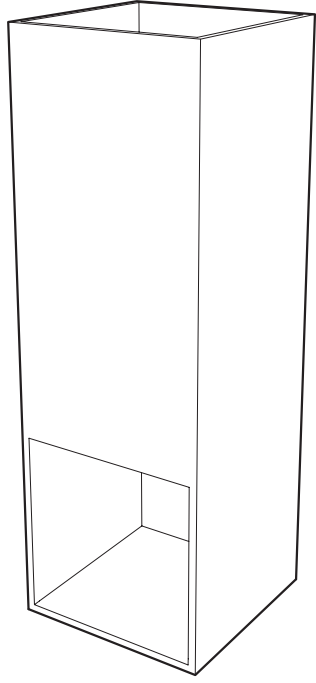
Water temple

Water is **life-giving liquid**, linked with life as nothing else in the world. People tried for centuries to dominate this wild and unlimited power. Technical progress taught humanity to understand it, to protect and care for water. Treat it with humility, and not to vain this precious gift. The water temple is humble. It leans over the surface to offer a particular space for contemplation. In complete darkness the man is freed from notions. He perceives only darkness and the play of light and shadow, caused by slowly floating **light reflections from the water surface**. The interior of the temple thus creates the feeling that the observer becomes part of the water element.



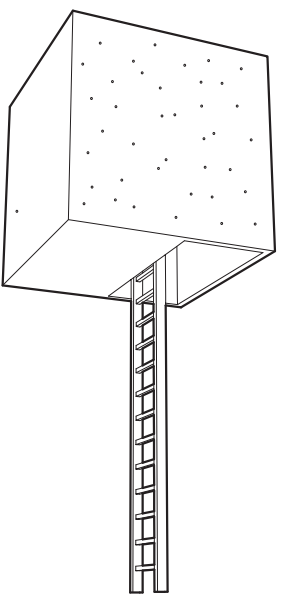
Fire temple

Fire is the element which has ability to **transform, transmute substances**. This fascinating feature which has always attracted people truly arrived at the sacred place of fire. Fire is retrieved in various religious symbols, associated with spirituality, purification and transcendental. Ideas are rising at the sight of fire glowing flames to heaven. By fire - burning - is transformed the temple of fire too. The interior is lined with rusted metal and rust is nothing more than a product of burning - change - oxidation.



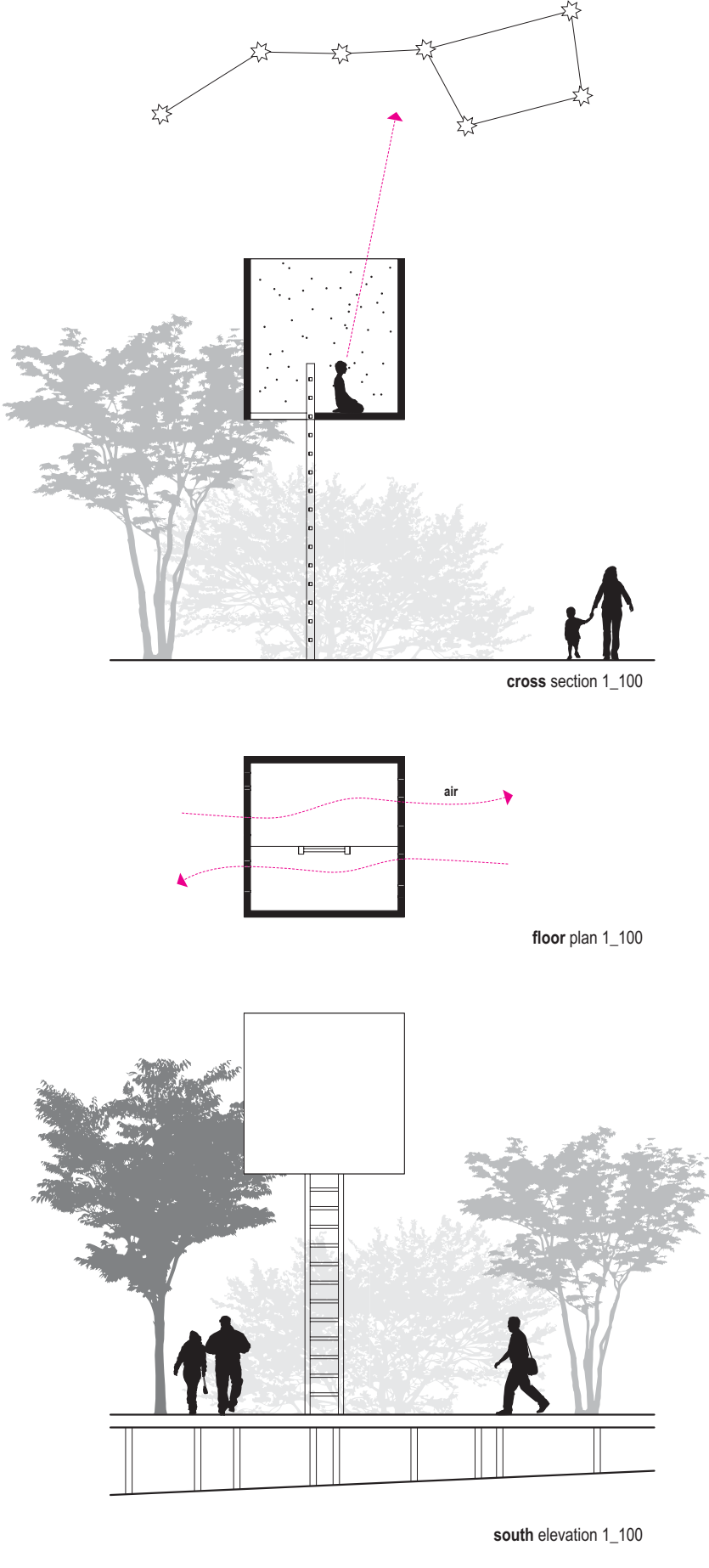
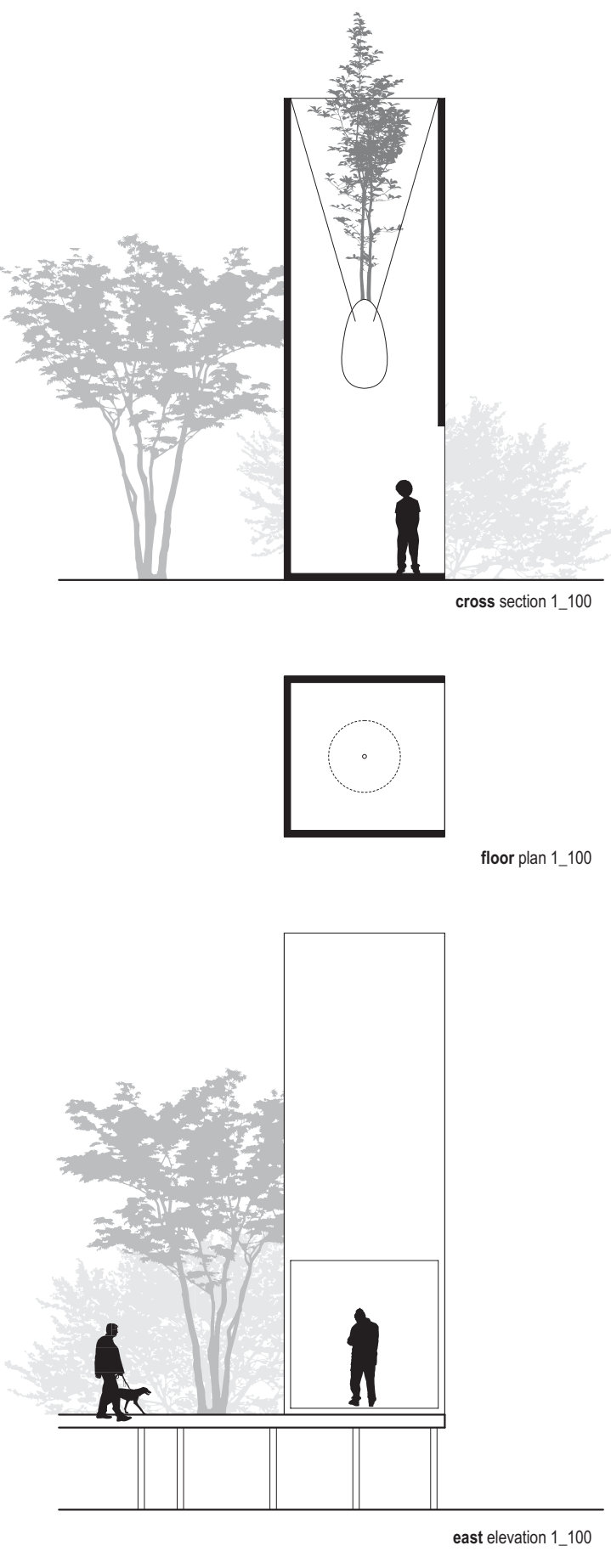
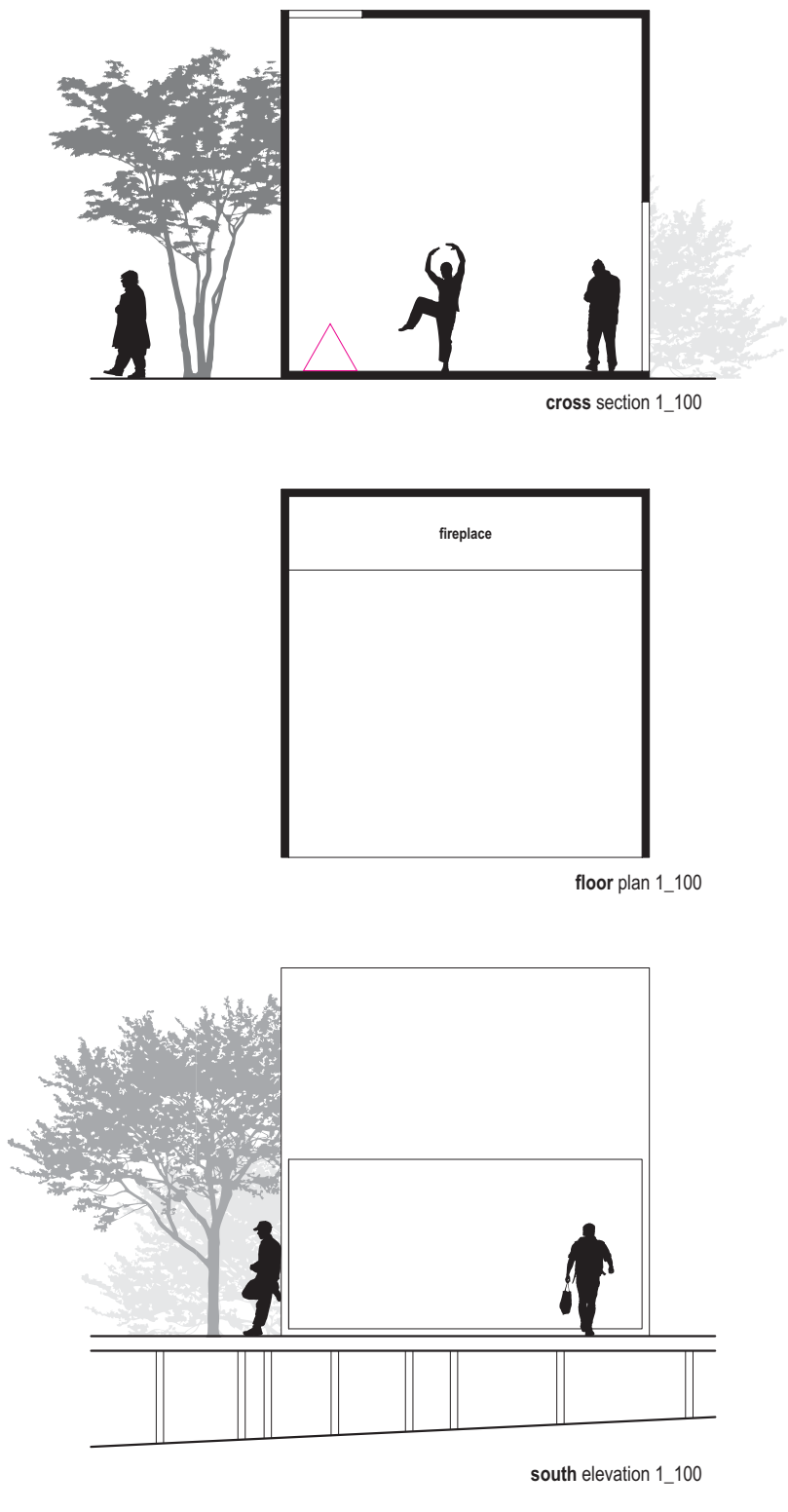
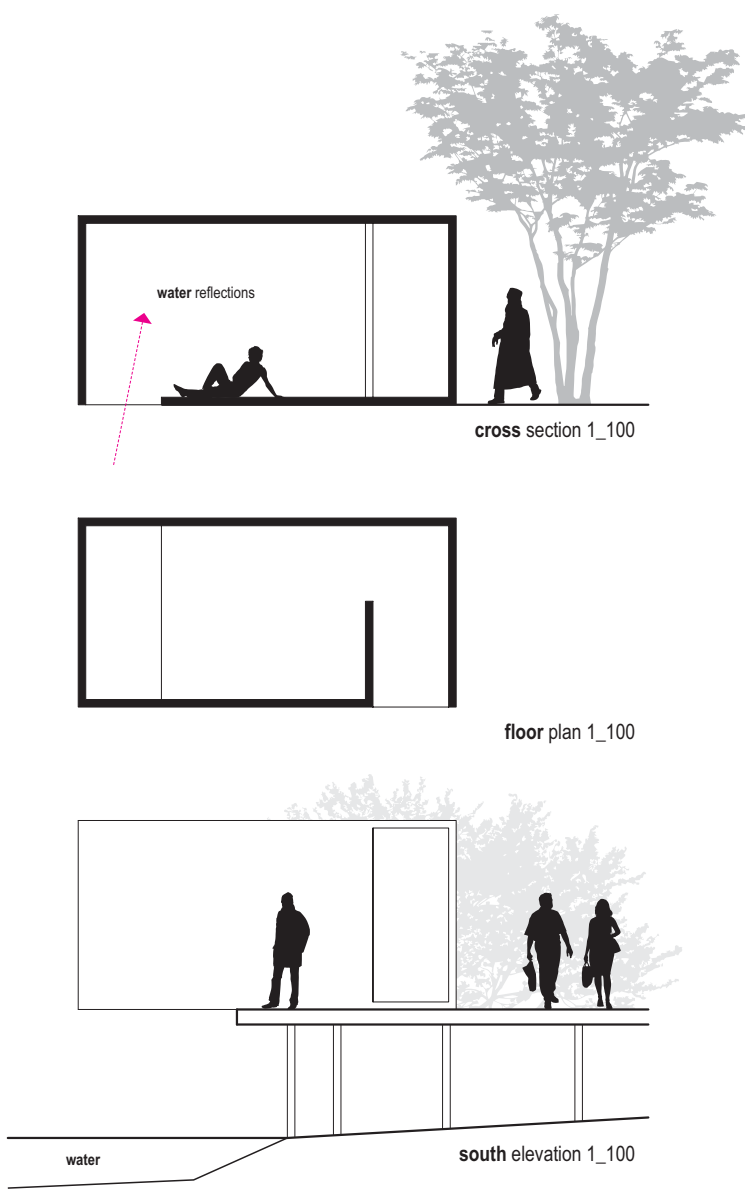
Earth temple

Earth provides a platform for all living organisms. On the earth, above the earth and in the earth is present life. Strongest bond is tied to the ground plants. From here they take **life-giving substance**, having the most intimate relationship. That which is not visible to human beings. In this installation, the man gets closer to this relationship and gets a chance to understand it. A tree is almost flying in the air and tries to grow over the edges of walls to catch more sun from sky. View attract a huge package of earth where the tree is planted. Visitors are able to see this live miracle and to think more about connection with earth.



Air temple

Air - liberty, freedom, unrestricted movement. The air temple is trying to unbound from ground and take off. It seems like the construction stands against the traditional conventions and it seems like flying. The ladder allows visitor to rise up, almost to **touch the sky**. The main opening is to the ceiling allowing visitors to watch the sky or stars during night. The temple of air is perforated with holes which work as a **whistle**, making the air flow thru it creating different tones whistling, remembering that the air is still all around us.



introduction to elements

The phenomenon of elements is as old as mankind. People has always been fascinated by power within them, which is unbound and still not fully understood.
The word "element" has a Latin origin of the word "elementum", which mean "beginning", "letter". Theories on the fundaments of the world stretch back to the Pre-Socratic period. **Doctrine of the four elements** was formed by Empedocles. The number of elements is not completely random. It corresponds to the four cardinal points, seasons and conducive to feeling a certain basic stability. The theory refers to the four elements of the Hippocratic doctrine of four body fluids, which is a mixture of temperament - the nature of man.

location

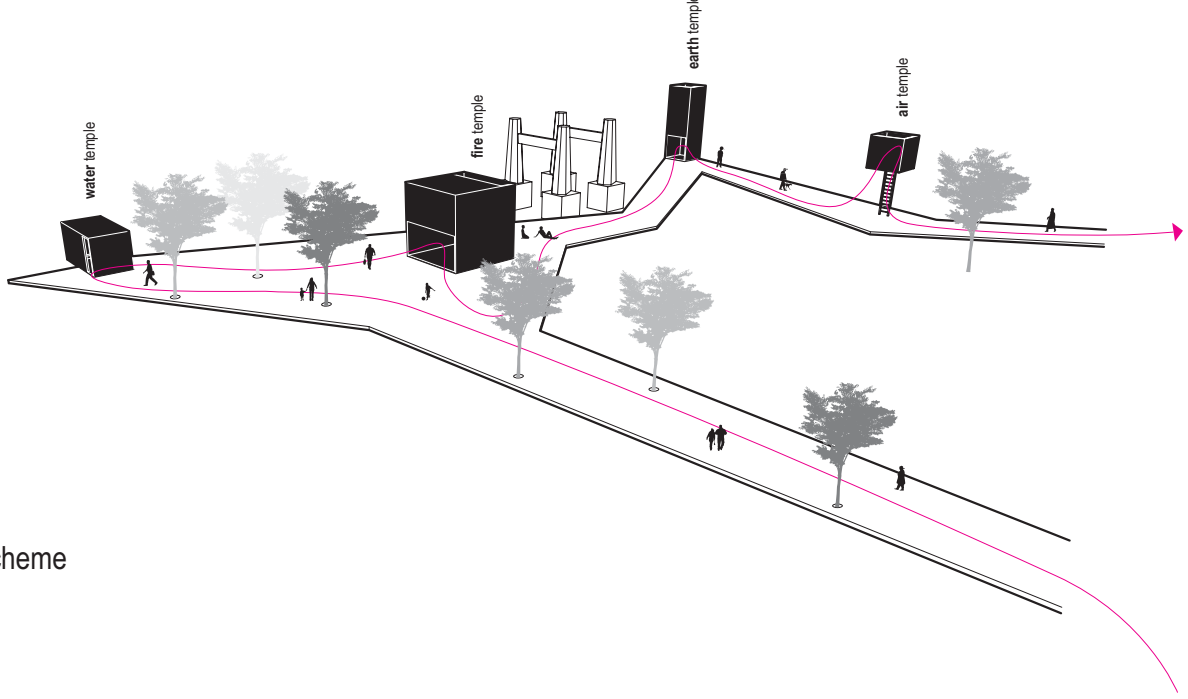
The site is located in **Bratislava suburb** near the urban part **Devínska Nová Ves**. It spreads by the road that connects Devínska Nová Ves with urban part Devín. During summer it is intensively visited by cyclists and tourists. Those mainly use the **international cycle route** which leading along the river Morava into the Czech Republic. The attractiveness of the site is supported by nearby castle ruin Devín and fossil repository Sandberg. Whole territory is frequently inundated by rivers Morava and Danube.

design

The site was seen as a **place for slowing down and contemplation**. Everywhere around you, you can find a strong sensation that confirms this feeling: river Morava, the Devin- phenomenon of national history, protected location Sandberg, extensive floodplain forests. The humility was felt and therefore has awarded the highly symbolic site. It was not the point to enter this environment with architecture that would compete the location. **Symbols do not subject the architecture - the architecture subjects the symbol.**
The path of the elements leaves cycling route, passes through the mysterious forest floodplain, slowing down the notions. A walk among the trees, look up from the ground slows the man and he will be able to focus more; and truly deep-feel the encounter with mysterious elements. Soon they are to appear on the scene.
For each element there was built a **temple**, in which takes place performance of **elements characteristic attribute**. Exterior architecture has given way to the main intention - to bring about a powerful experience of meeting the element. **Shapes are streamlined** and free of any morphology – so the essence of every element is deep-felt.
Our proposal is tuned to **simple, basic, natural materiality and construction principle**. Due to the flooding of the entire area, the whole platform is raised on steel columns. It is assumed that the major flood could cause objects to flood. In the case that flooding will be less severe, it will be still possible to walk on the platform. Temples of the elements are built of light steel frame construction and cladded with wooden planks lining. **The path itself respects existing trees** by „flowing“ between them and also allowing them to **grow through the wooden boards construction**.
It was to ensure that **spirituality and sacramentality** of this area had the opportunity to discover the passing cyclists and tourists, whether a family on a sunday walk. It was chosen a form of contemplation and active travel experience, experience which is not just attraction, but the tool for understanding the importance of place.



situation wider context 1_1000



general scheme



water temple



fire temple



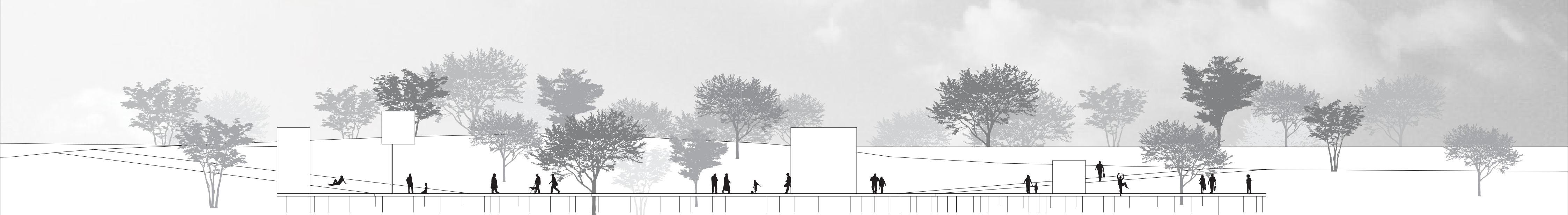
earth temple



air temple



southern section view 1_200



western view from water 1_200