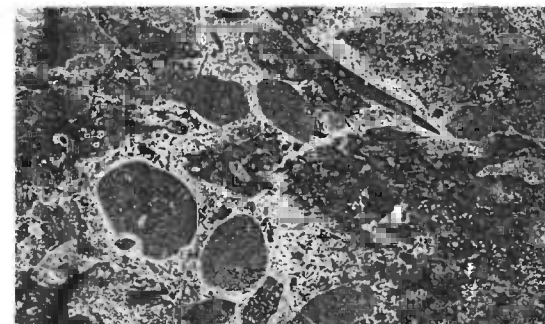
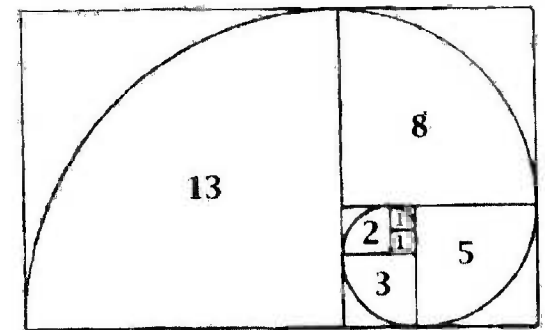
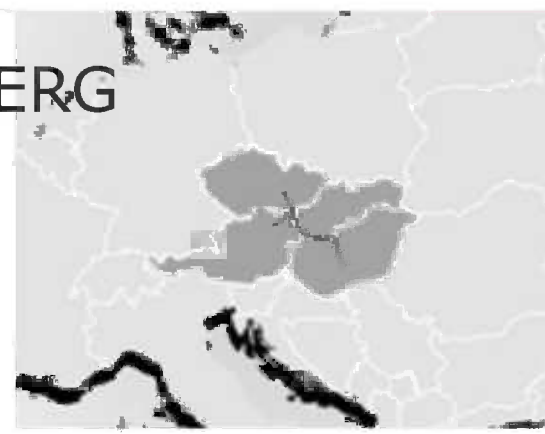
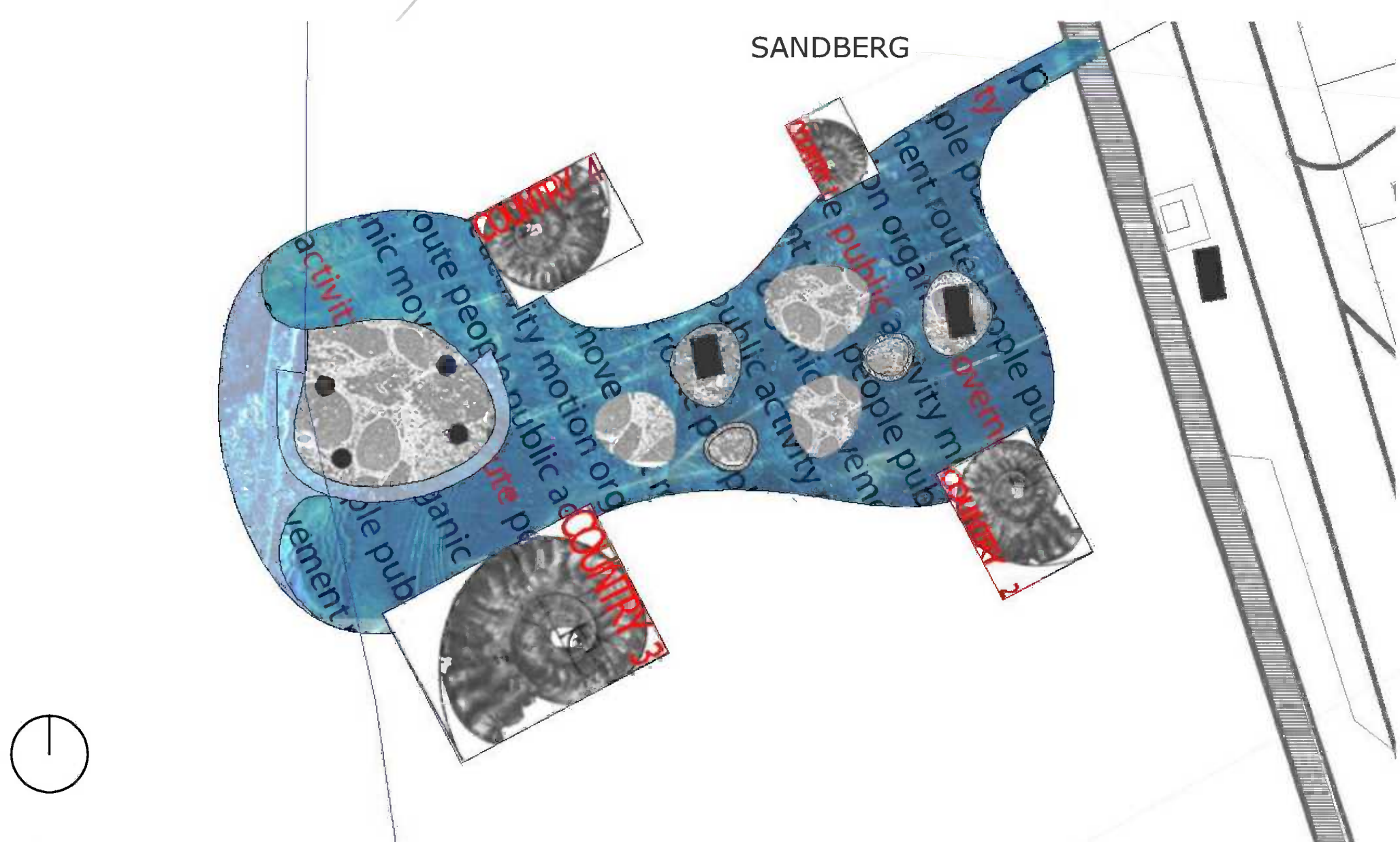


SAND-BOX PLAY-GROUND

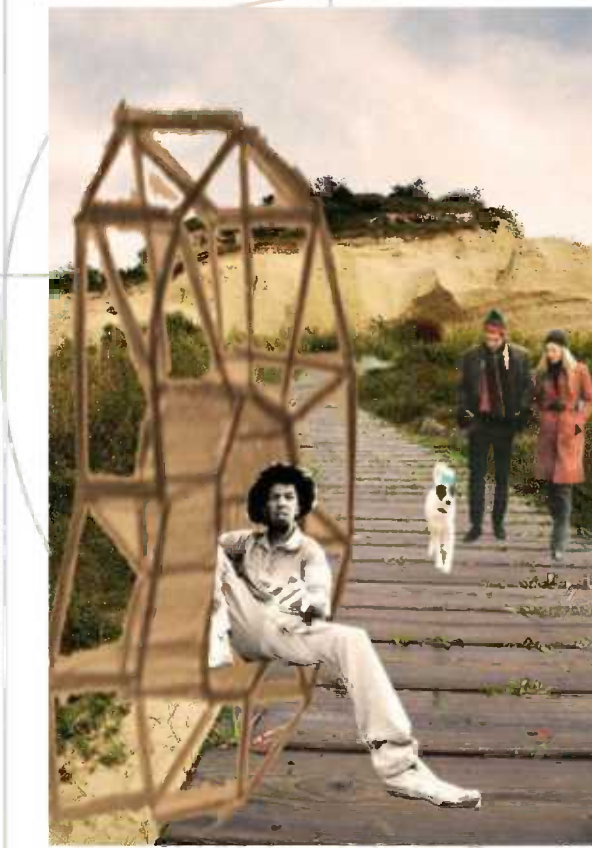
086687

PHILOSOPHY
FOUR COUNTRIES, ONE POINT UNITED BY THE SAME ELEMENT, WATER, THE
ELEMENT OF LIFE.
PLACE FOR RELAX, ENJOY AND LEARN

RELATIONSHIP WITH THE ENVIORNMENT
SHAPE OF THE BUILDINGS = GOLDEN RATIO = FOSSILS OF SANDBERG
PLATFORM= UNION BETWEEN BUILDINGS (COUNTRIES) ORGANIC,
WITH MOVEMENT, COMMUNICATION, PEOPLE, CHILDREN



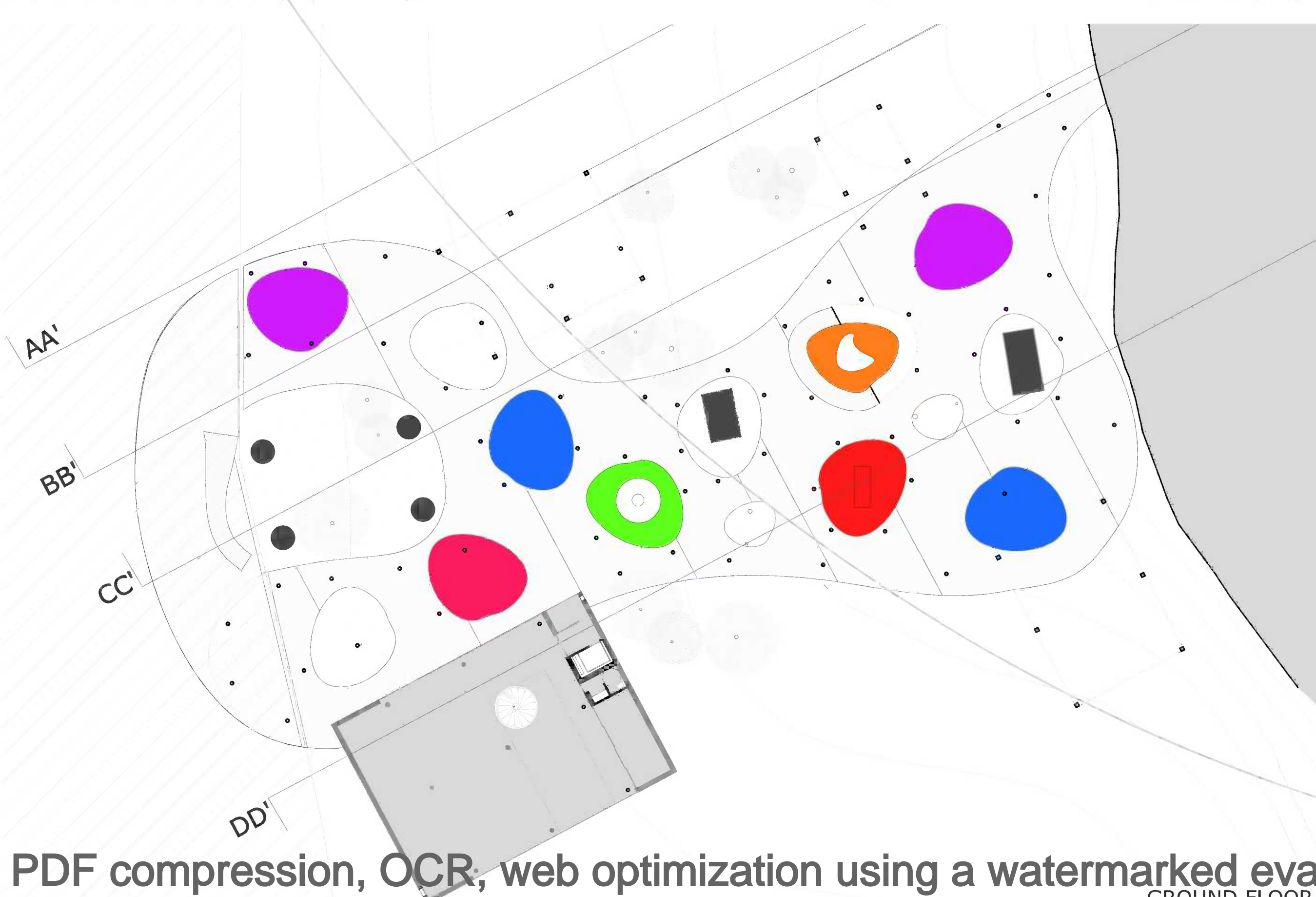
PATH FROM SANDBERG TO SAND-BOX PLAY-GROUND



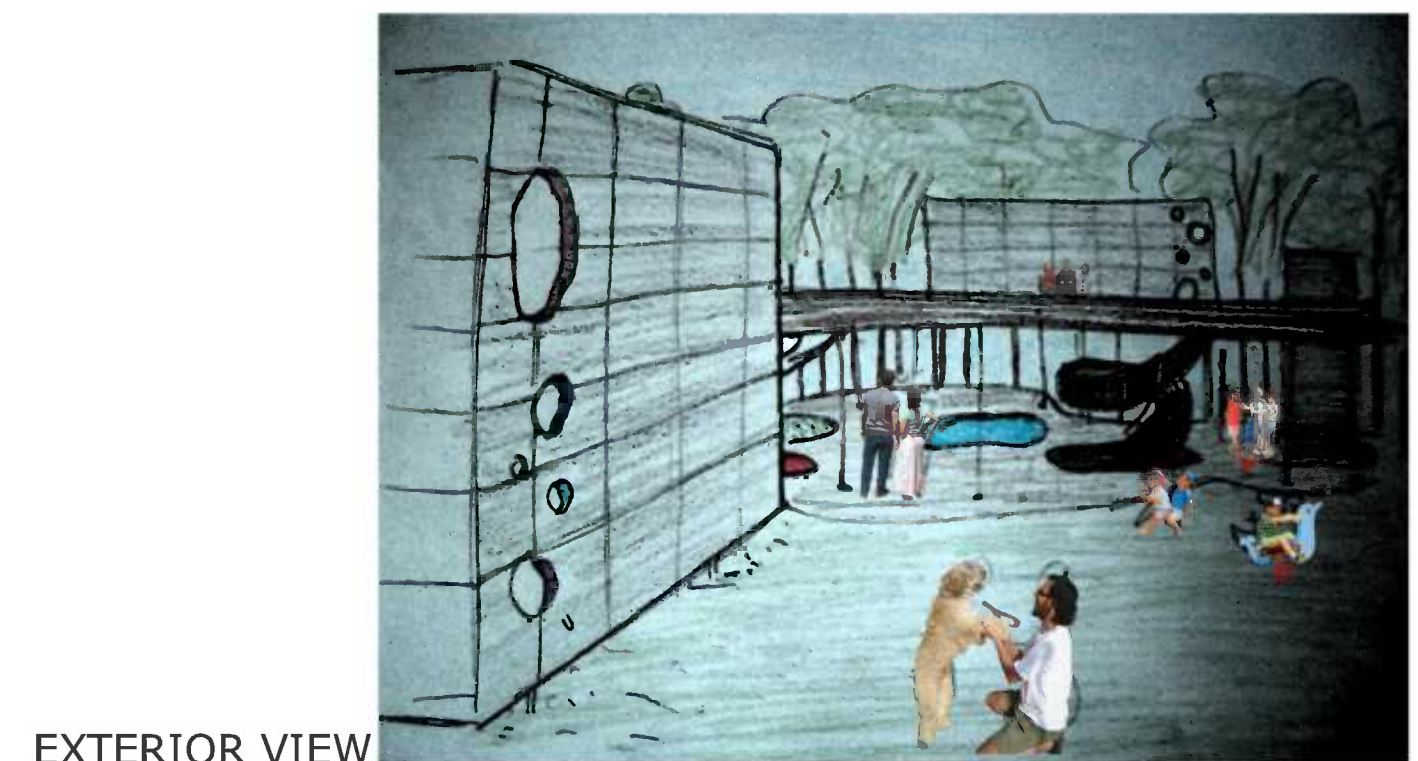
WHOLE PROJECT IS PIERCED BY THE SAND OF SANDBERG (VIEW MICROSCOPE).
GETTING LIGHT INTO THE BUILDINGS AND UNDER THE PLATFORM



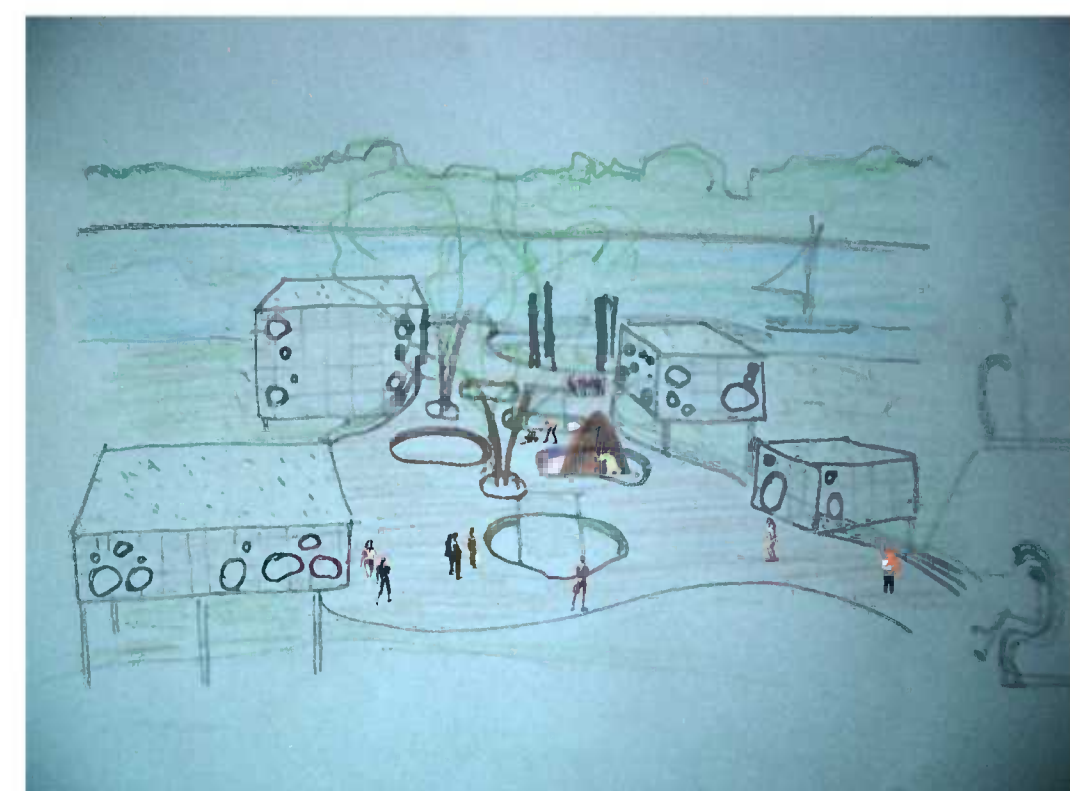
FIRST FLOOR



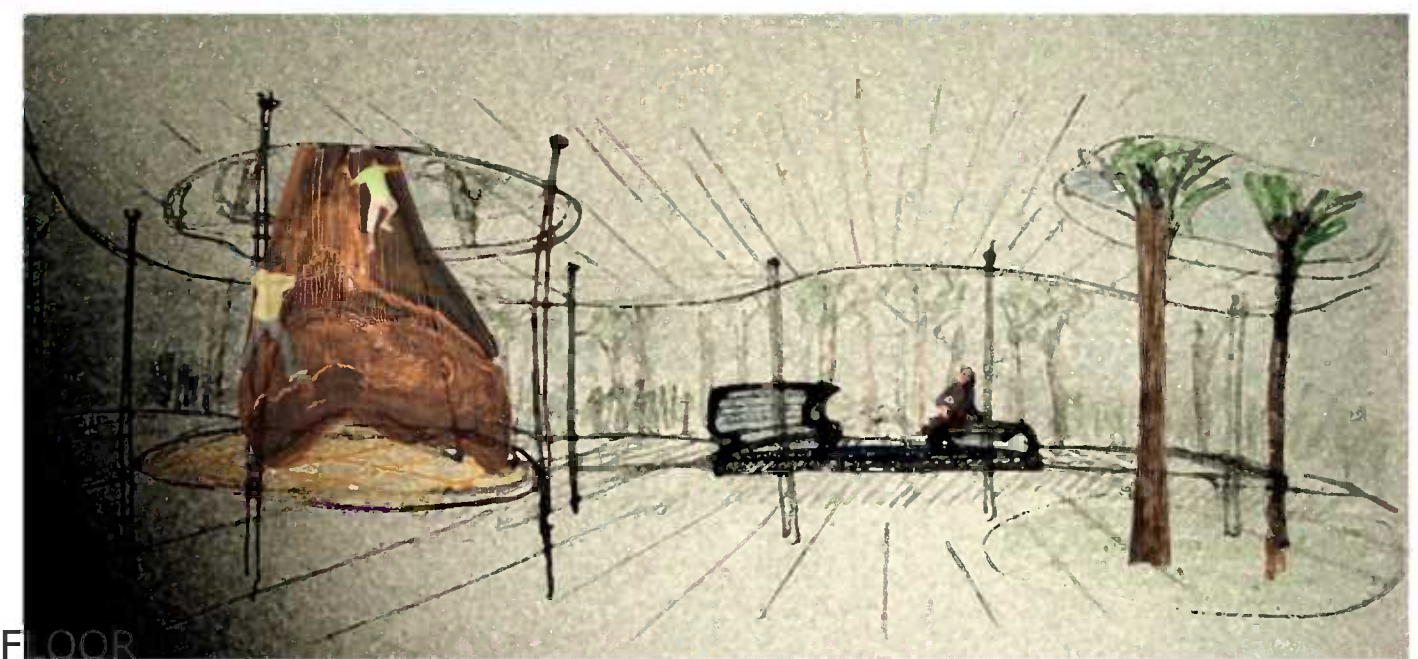
GROUND FLOOR



EXTERIOR VIEW



AIR VIEW



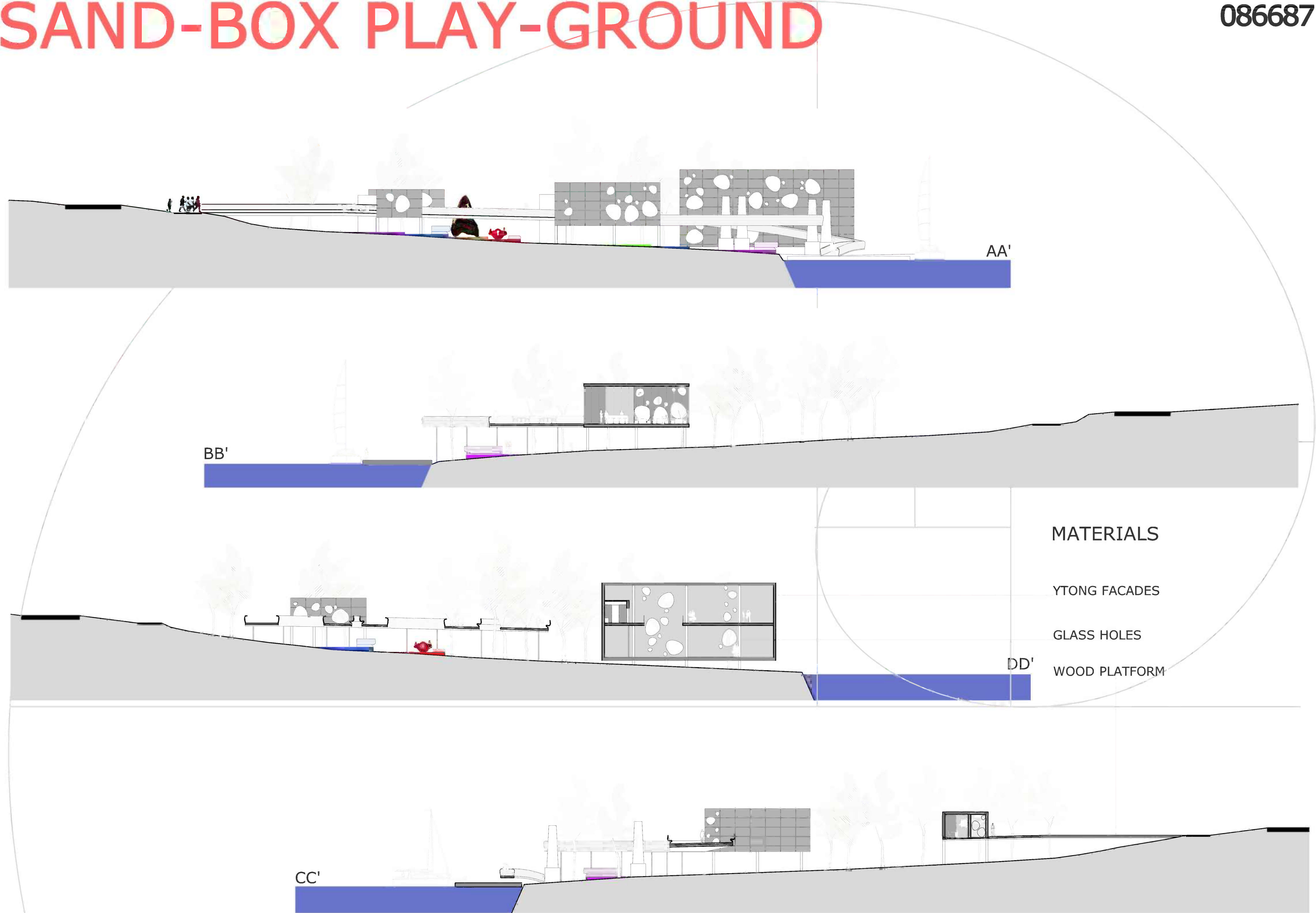
GROUND FLOOR



NURSERY



BAR



PLAYGROUND FOR CHILDREN

PLACE FOR LEARN ABOUT SANDBERG, THE FOUR COLUMNS AND PLAY.
CHILDREN CAN LEARN ABOUT WHAT IS SANDBERG AND WHAT ARE THE FOSSILS
WHILE THEY ARE CLIMBING A PLASTIC SHARK TEETH FOSSIL FOUND IN SANDBERG.

EACH "SAND" (FROM SANDBERG) HAS DIFERENT ROLE.
THE PURPOSE IS CREATE A FUN AND LEISURE SPACE FOR CHILDREN AND ADULTS.

ALSO THAT SPACE IT CAN BE USED FOR TEMPORARY EXHIBITIONS

