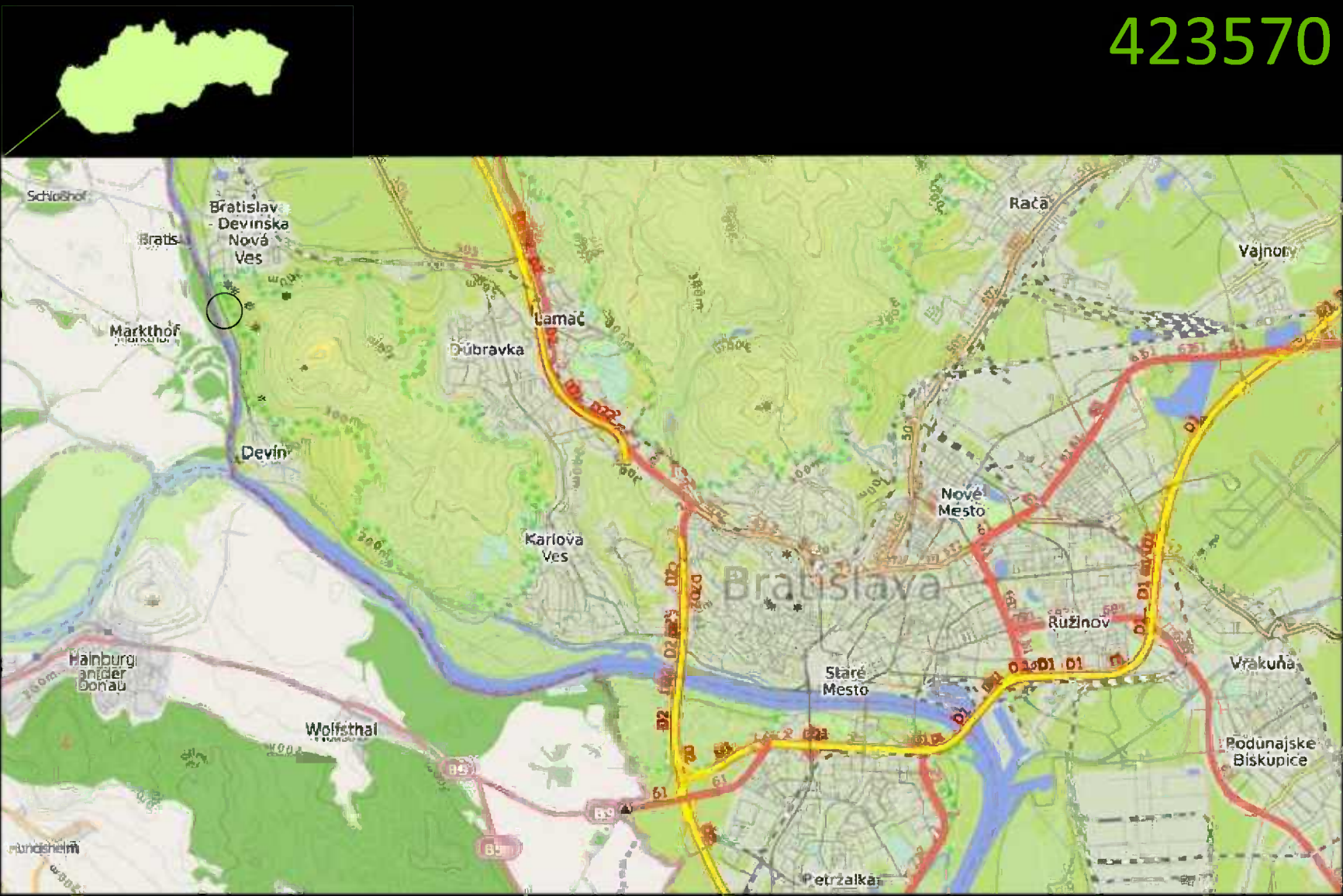


meetingpoint <4> sandberg

423570

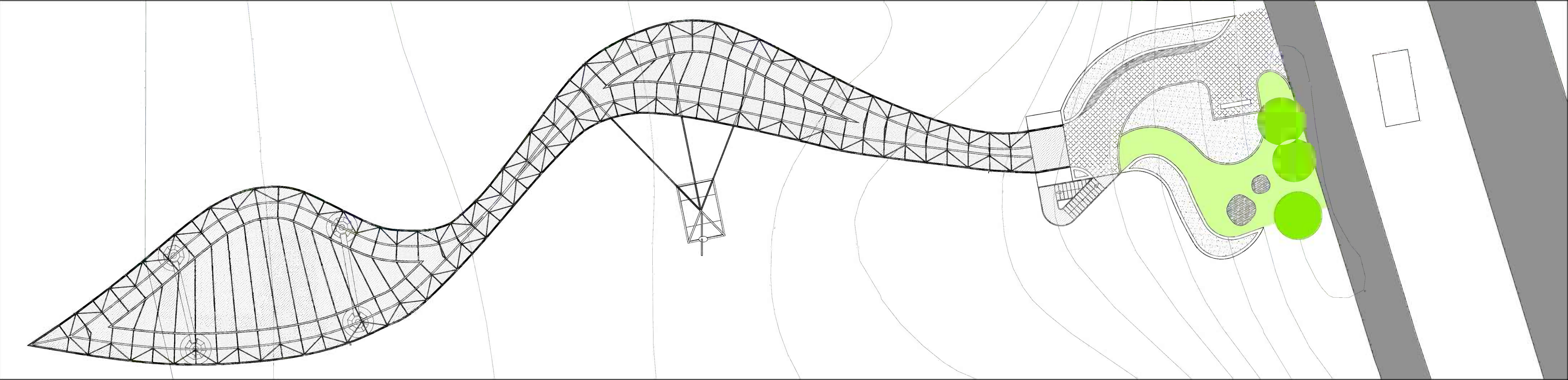
- wind turbine to generate electricity
- bridge made of perforated steel so almost no maintenance is needed
- concrete benches - water would not damage them
- concrete tiles in the grass
- amphiteatre could be used just for sitting
- terrace facing south
- toilets can be open also when the cafe is not



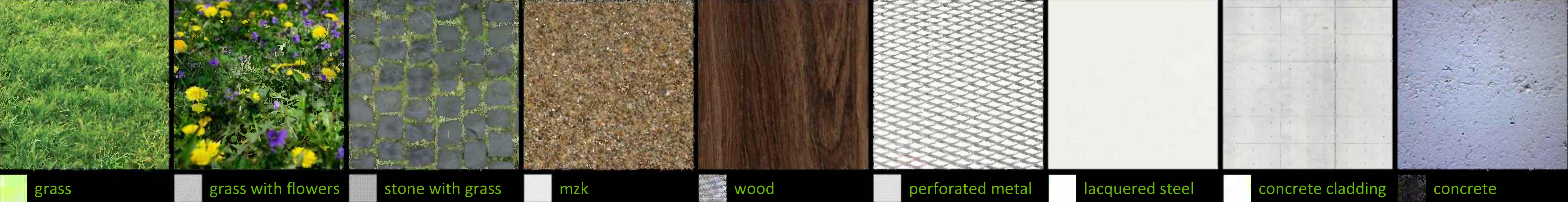
location on the map



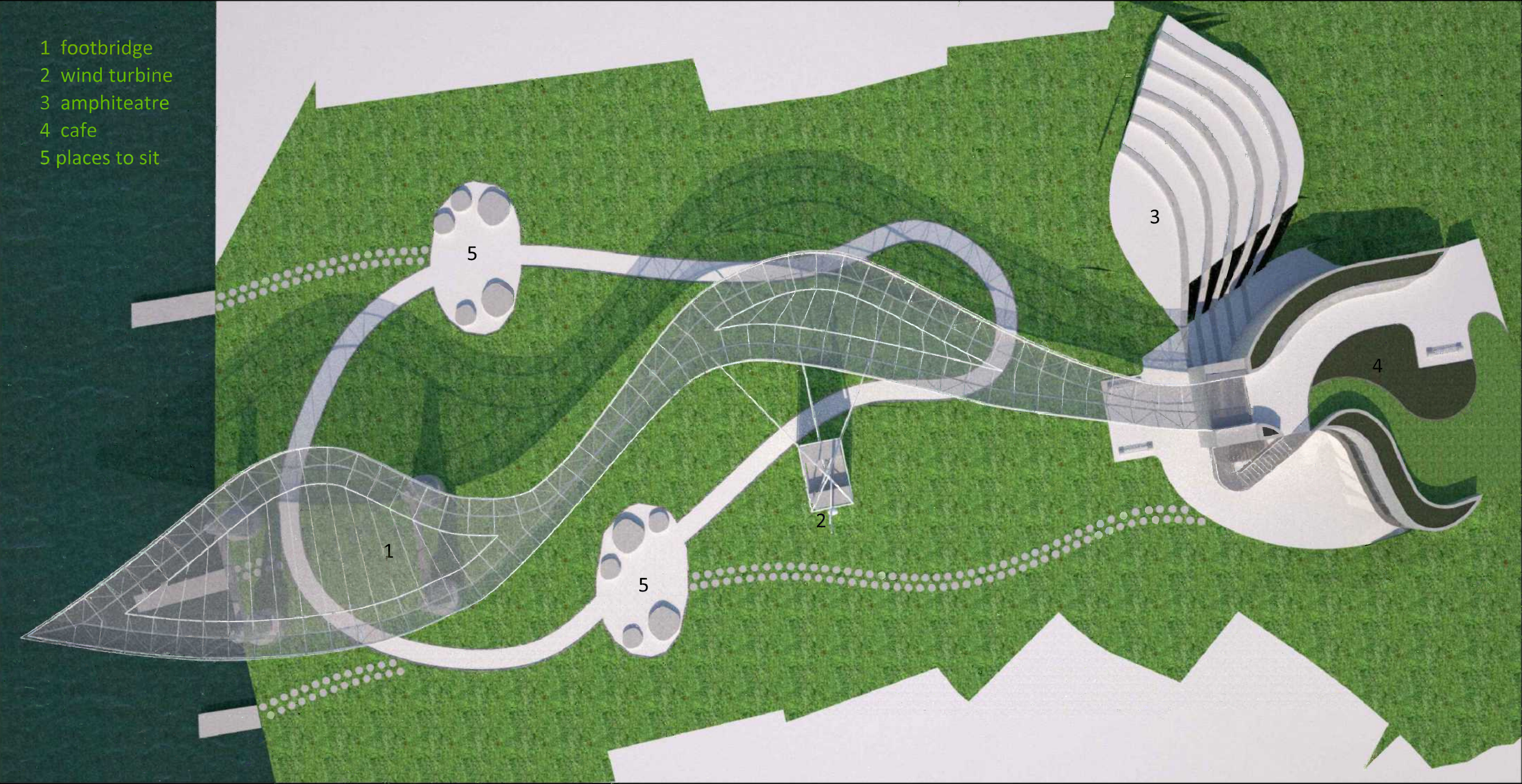
first floor plan 1:200



ground floor plan 1:200



materials



site plan



sections 1:200

elevation



elevation

