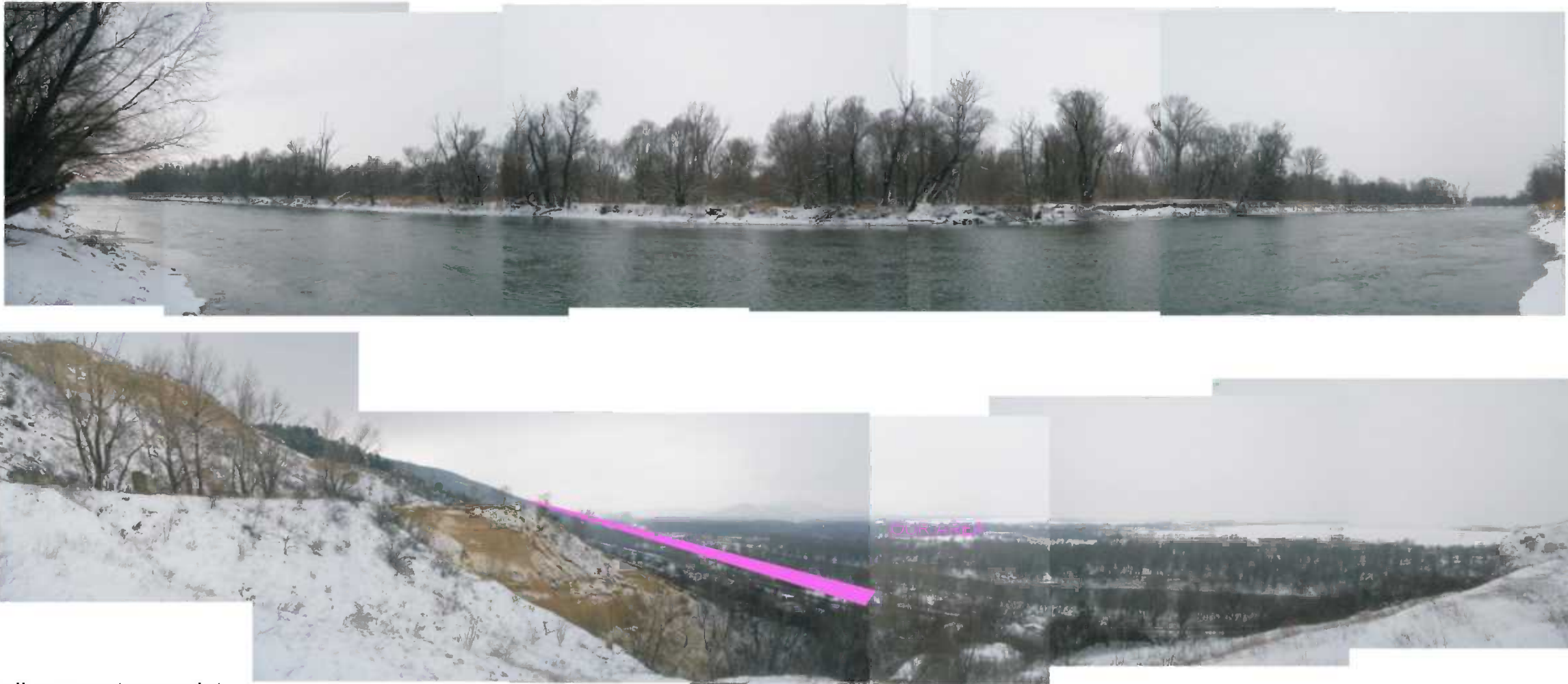
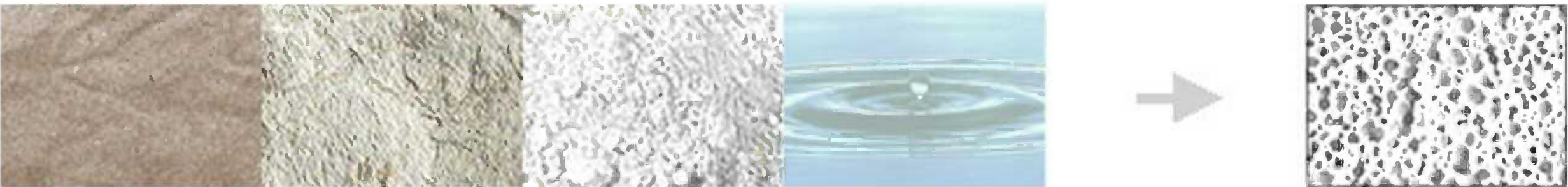


WIDER CONTEXT



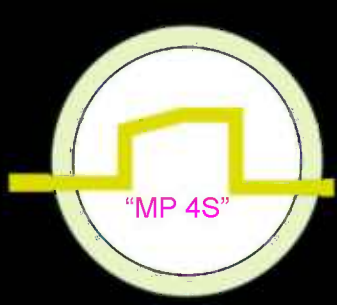
WIDER CONTEXT



Idea
The aim of design was to create a place for relax and meeting people with minimal intervention in the country. Almost all concepts consist of oblique ramps with minimal ecological intervention. It provides visitors to apperceive beauties and potentials of environments like terrain, water and sand. The location is linked with Sandberg by walking trail where relaxing platforms for relax are designed. One big platform with view from former cableway line to Schlosshof in Austria is situated on the top.



SCHEMA



BASEMENT PLAN 1_500

GROUND PLAN 1_500

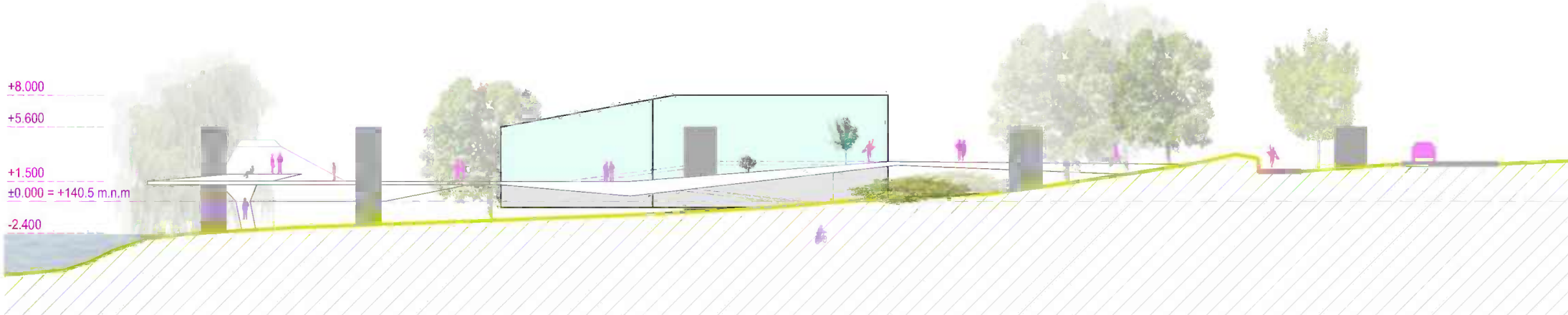


Functional solution

Design have conserved current urban character. Project offers basic service like **information** and **toilets** for visitors who come by walk or by bike.

Main form create building of **museum**, which give visitors information about history and background of this location. Building includes exhibition, multifunction hall as a place for study or conference and storage room. In the main part of building is situated one from the pylons as a component of the exhibition. The main construction is made of glass and it can be open to the environment in summer. It links interior with environments.

All parts of the oblique ramps create places for pleasure and movement. One of the parts offers **multifunctional space** for entertainment programs (singers or dancers) and also place for summer open-air cinema.

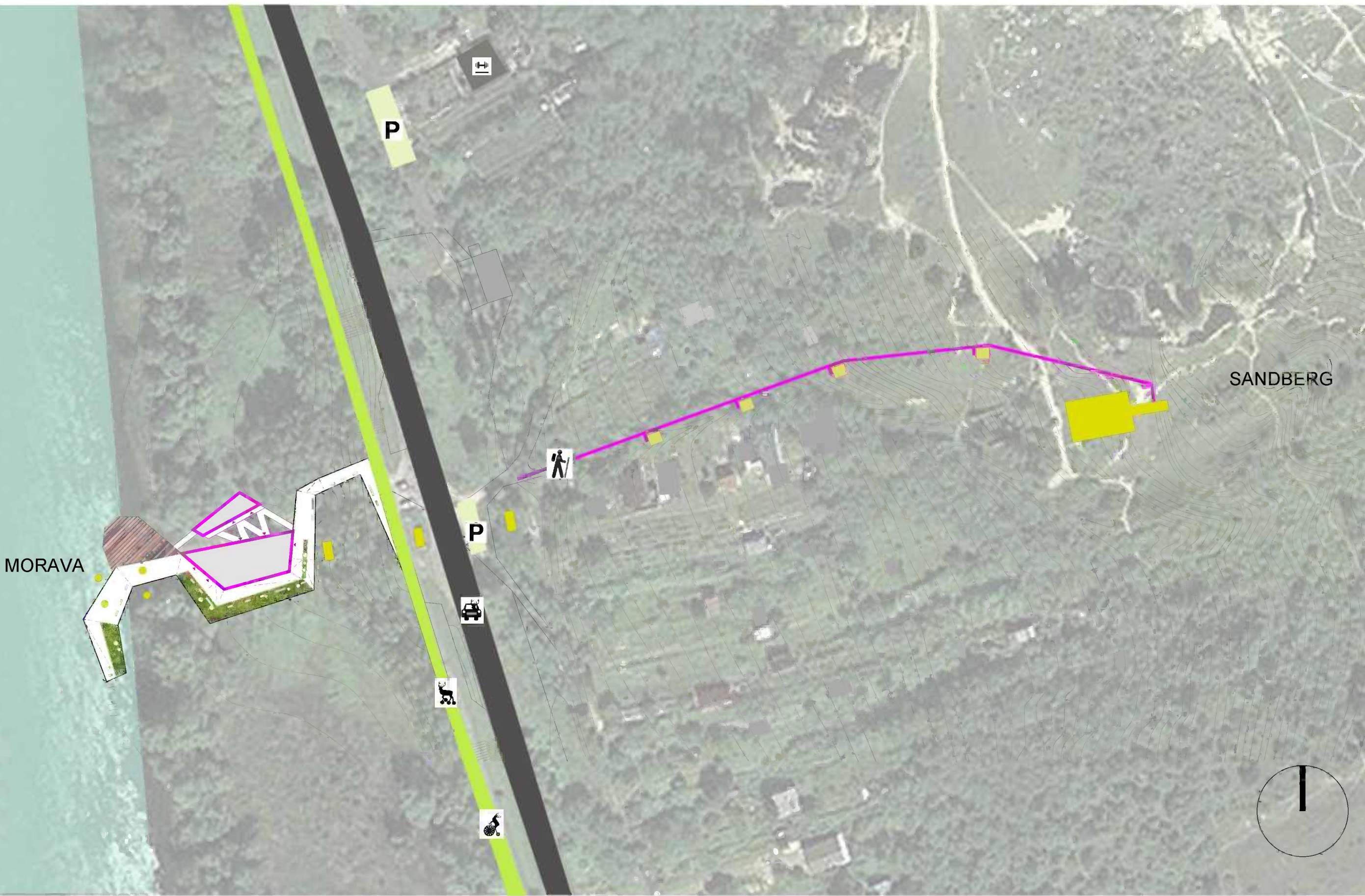
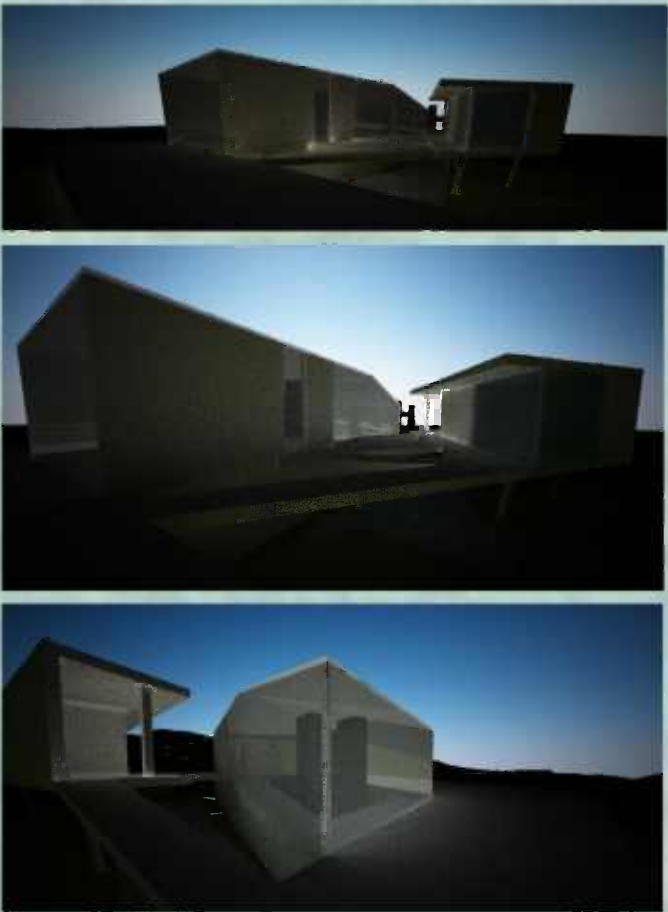


SECTION

VIEW

Construction solution

Minimal ecological access was used at minimal ecological access was used. The building is situated on a sloping terrain with a river to the left. The building is made of glass and it can be open to the environment in summer. It links interior with environments.



SITUATION 1_1000