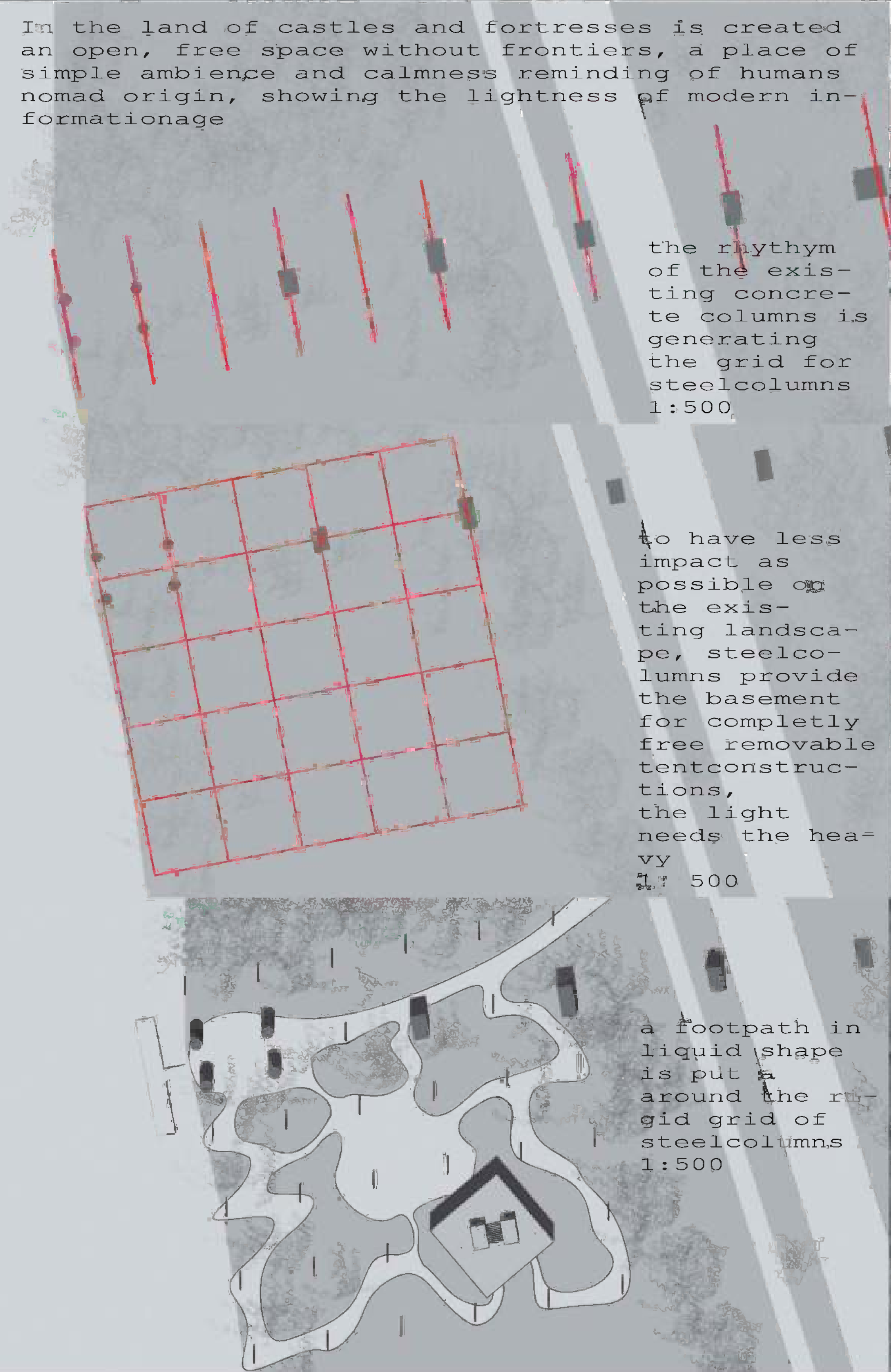


coalescence of space



meetingpoint sandberg

In the land of castles and fortresses is created an open, free space without frontiers, a place of simple ambience and calmness reminding of humans nomad origin, showing the lightness of modern informationage



the rhythm of the existing concrete columns is generating the grid for steelcolumns 1:500

to have less impact as possible on the existing landscape, steelcolumns provide the basement for completely free removable tent constructions, the light needs the heavy 1:500

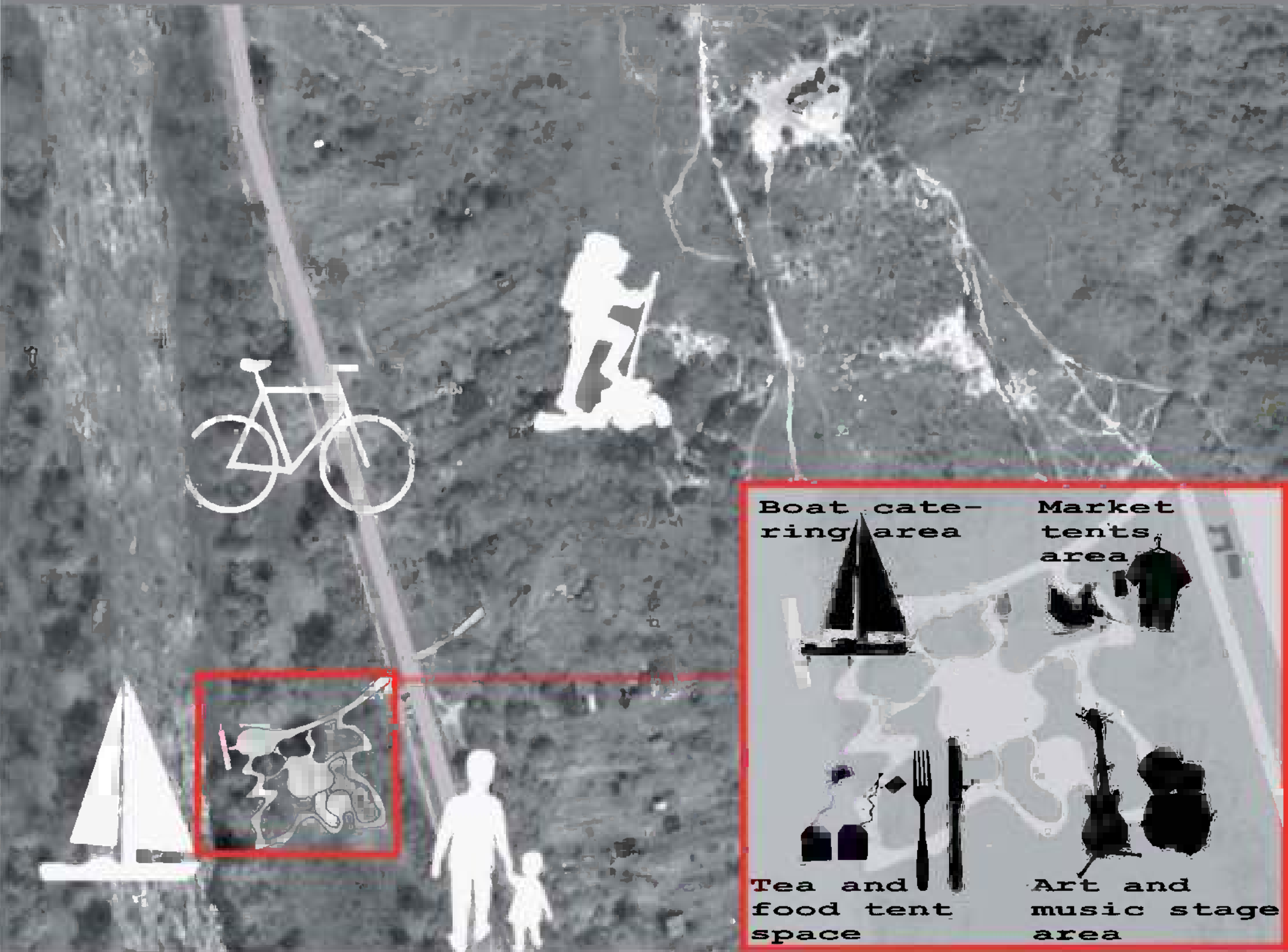
a footpath in liquid shape is put around the rigid grid of steelcolumns 1:500



elavation in winter 1: 250



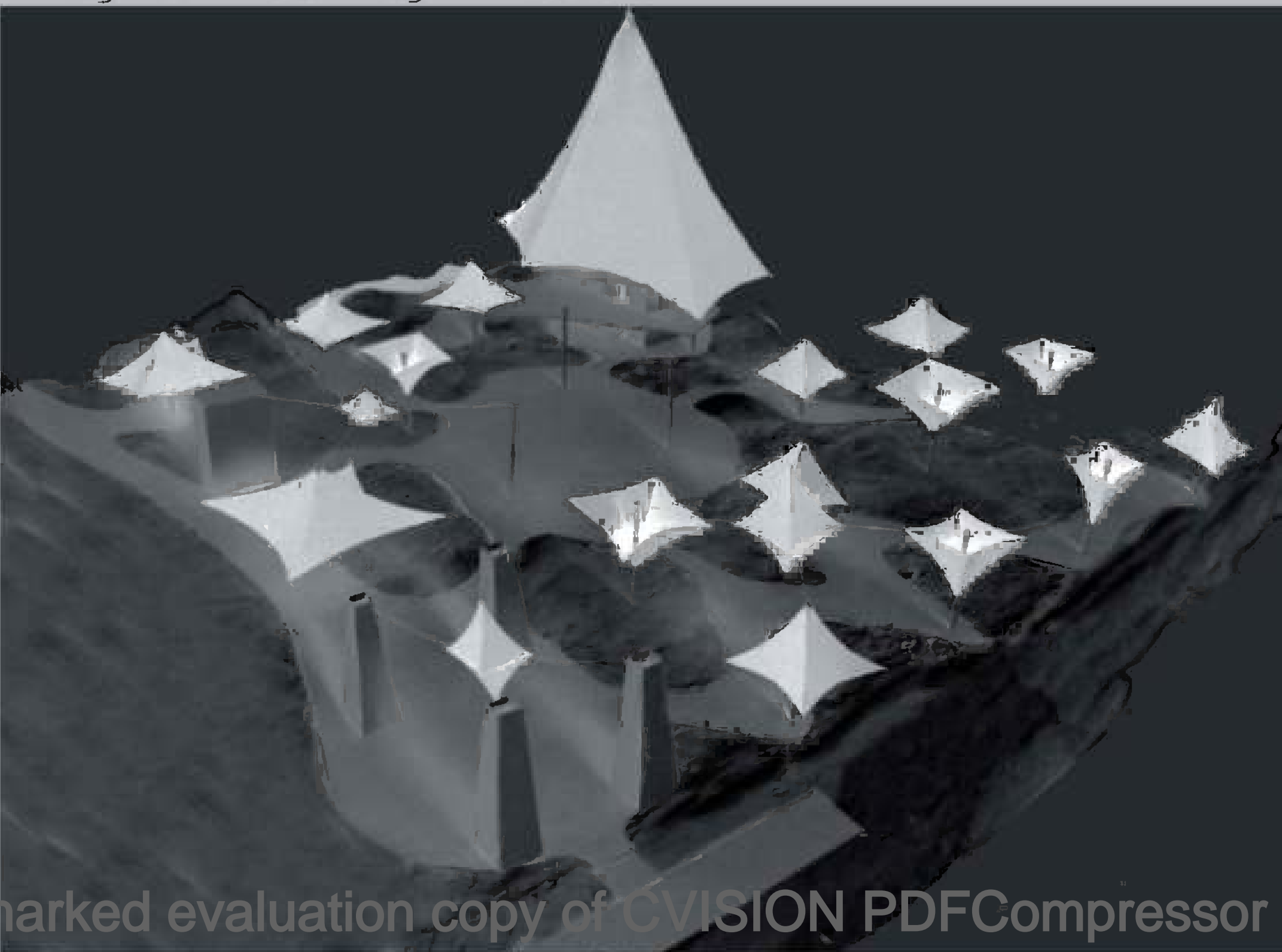
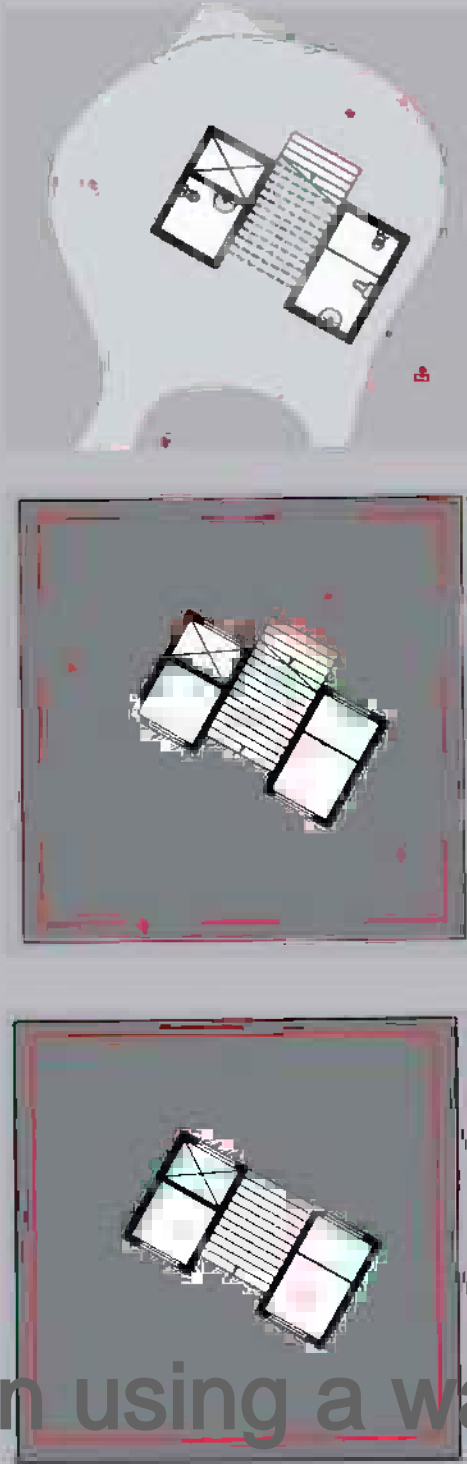
cross-section 1: 250



Boat catering area  
Market tents area  
Tea and food tent space  
Art and music stage area

a permanent building in exemplary Ytong constructionssystem is providing space for an sheltered exhibitionarea, barerfree toilets and lockable rooms for facilities. The **groundfloor** is open to the nature-side, removable walls on the **firstfloor** can provide a semi closed exhibitionarea, the **second floor** is completely closed, translucent material of tents is leading diffuse light inside

1: 250







sails without boats



flexible Tentconstructions can be put in many ways between the steel-columns: „THE NOMAD“

1:50



underneath the „BLOSSUM“: traders sell tea, wine, beer,, the „NOMADSBLOSSUM“ creates space for leisure, relaxing, dreaming...a place for for calm privacy...

1:100



elevation in summer

1:250

