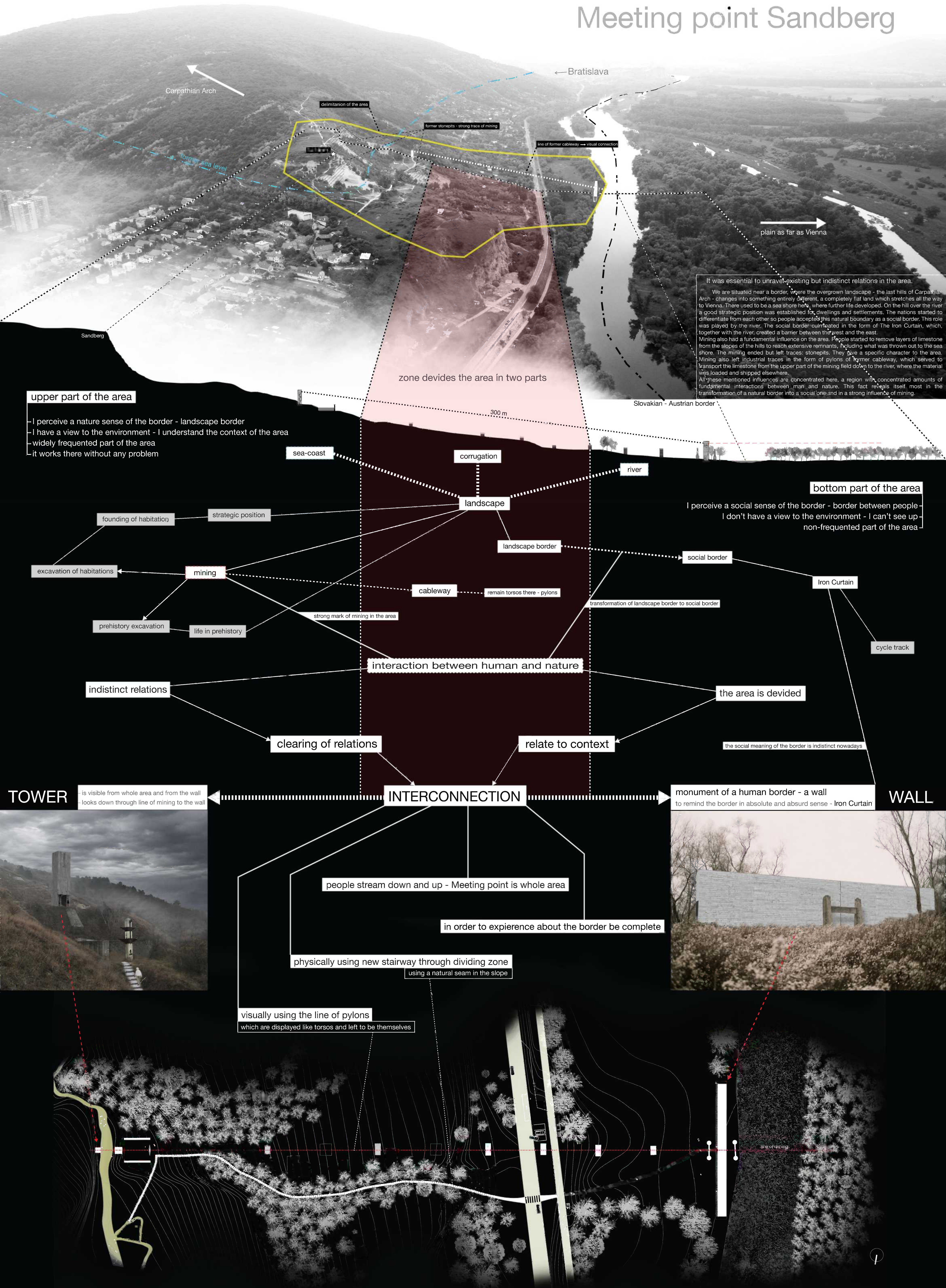
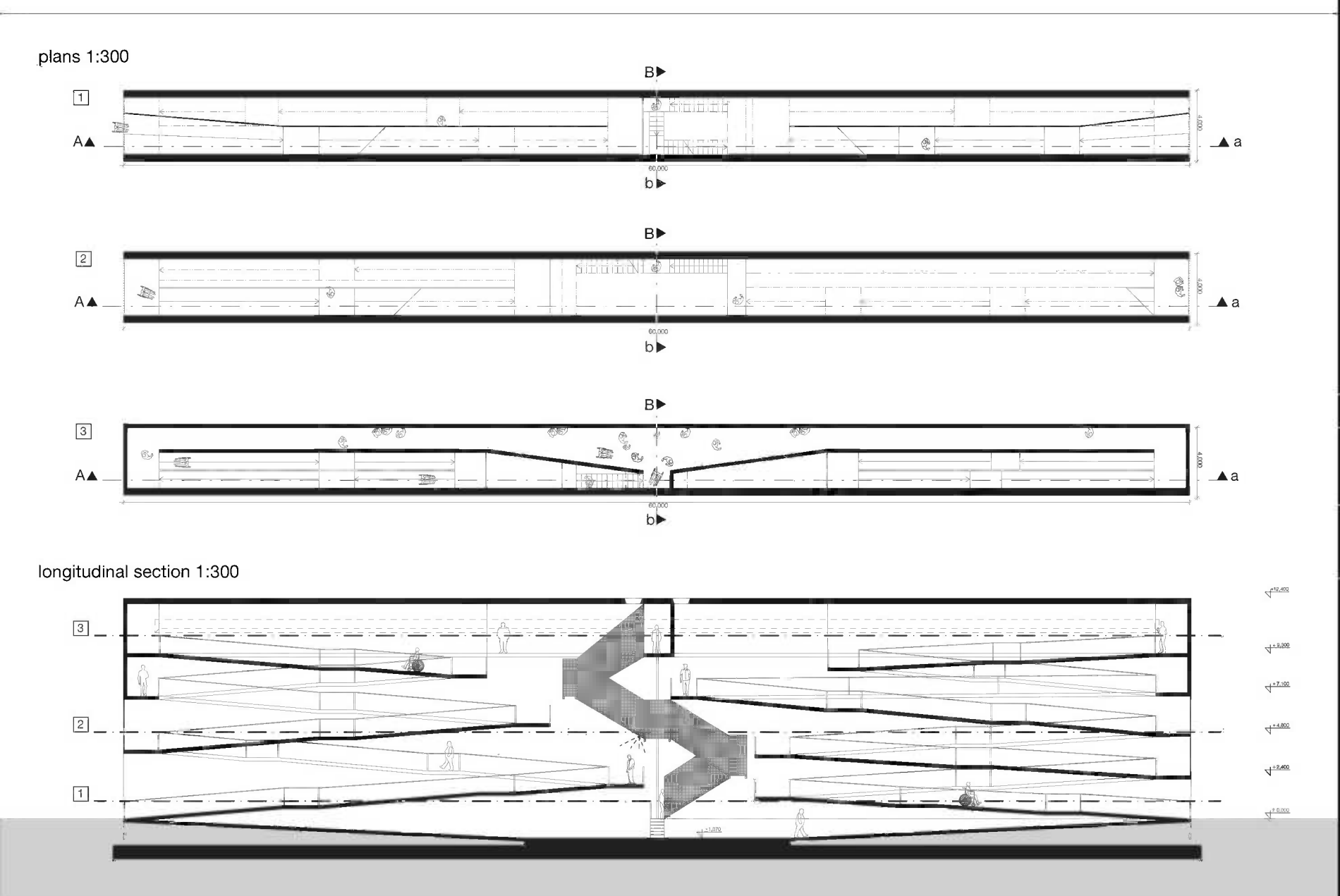


Meeting point Sandberg

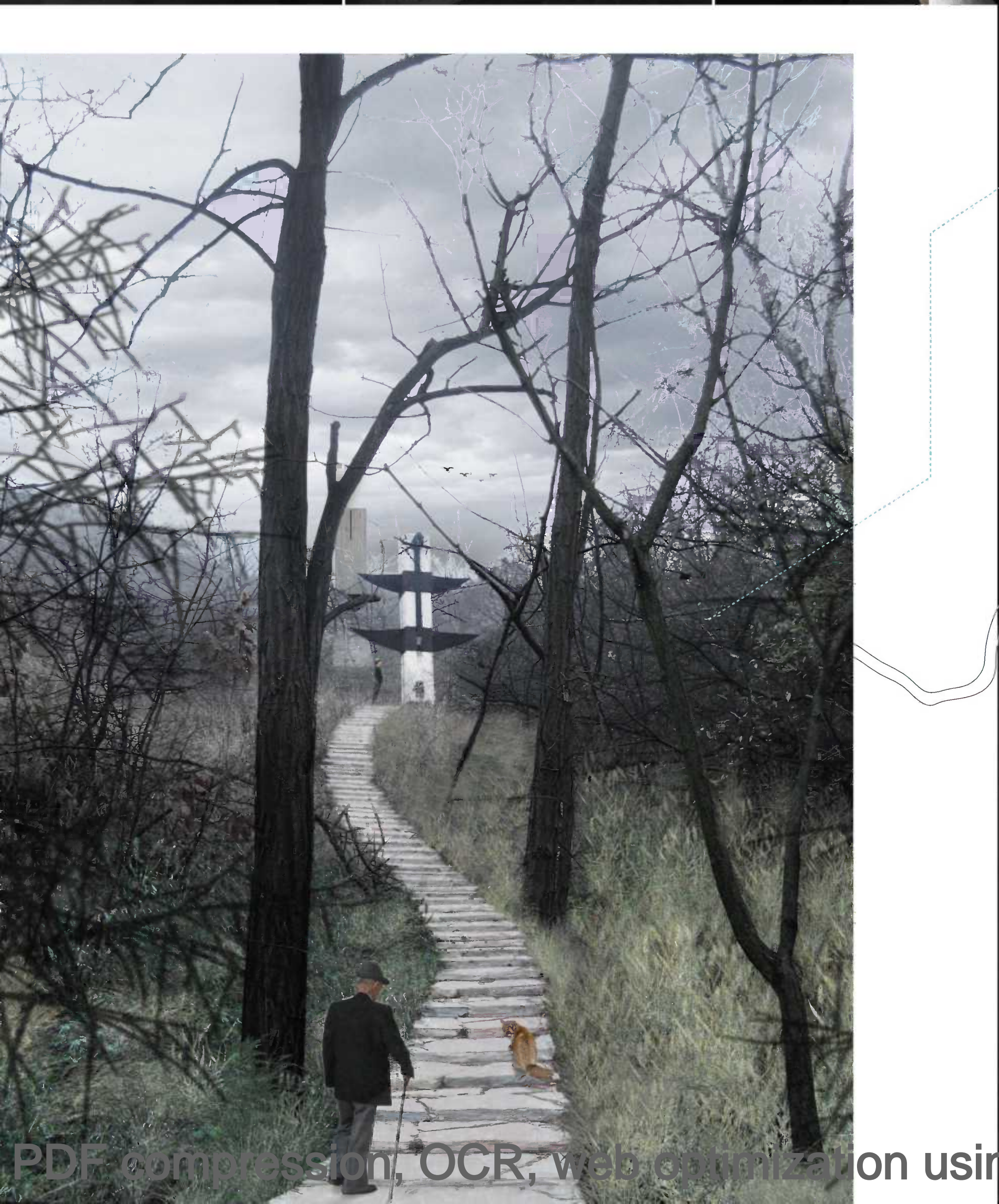




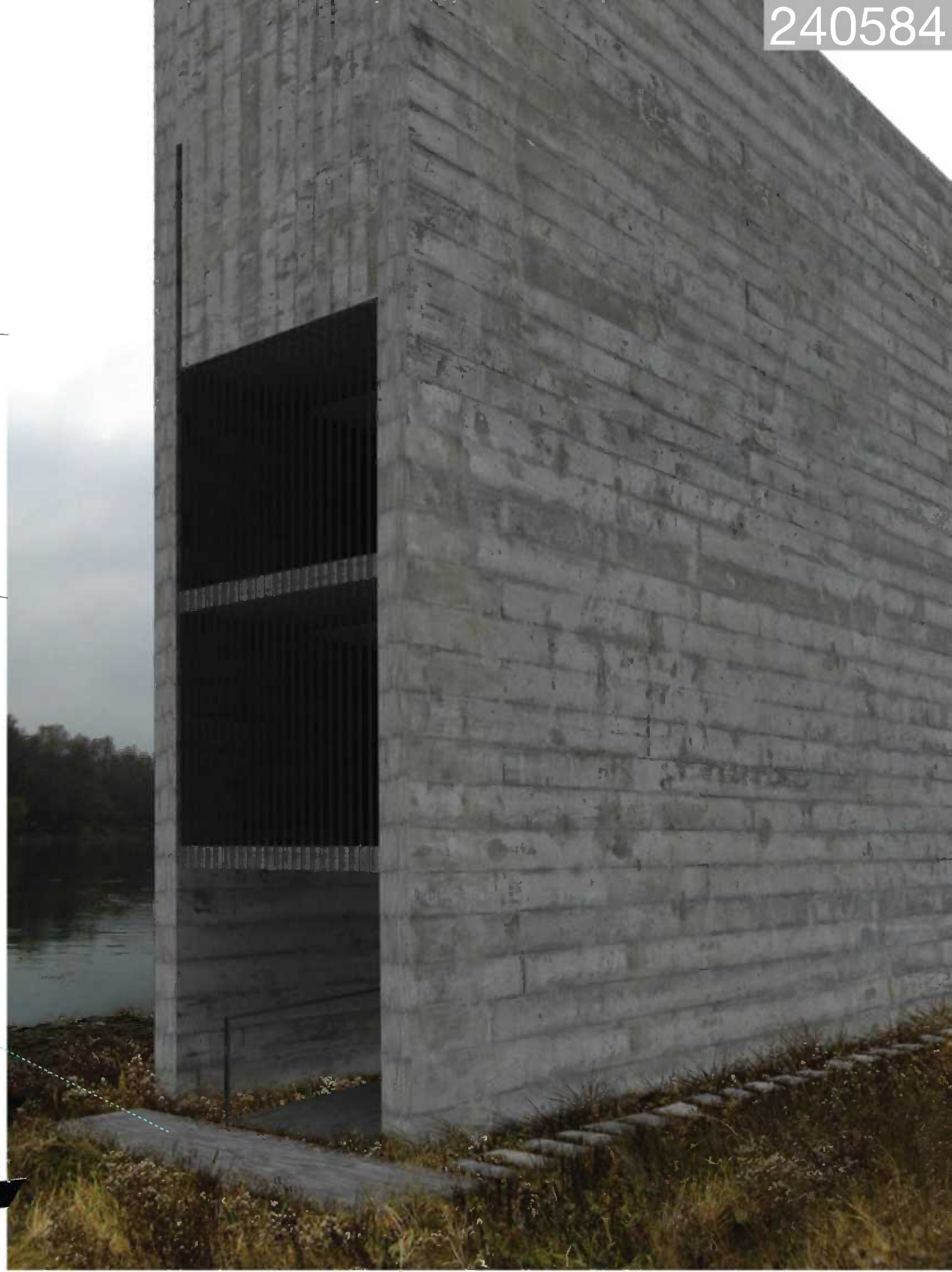
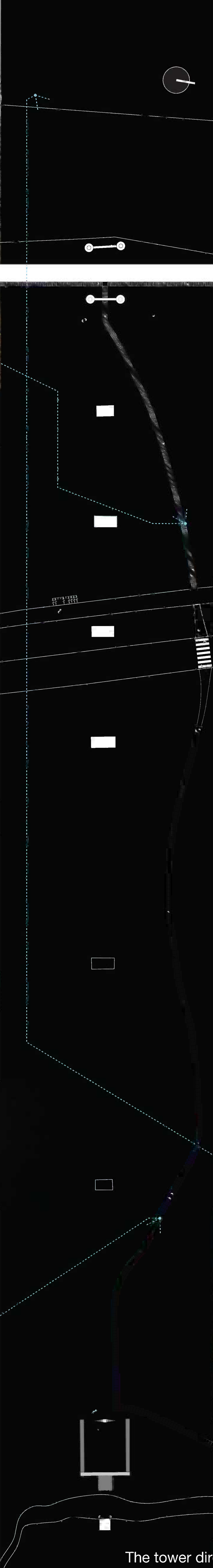
Monument reconstructs the journey and feelings of escapees to the west. Primary feelings of being entirely cut off of the world. The look through the chink to „the other side“ evokes the notion of the „world behind the wall“- overcoming of fears and the determination to continue.



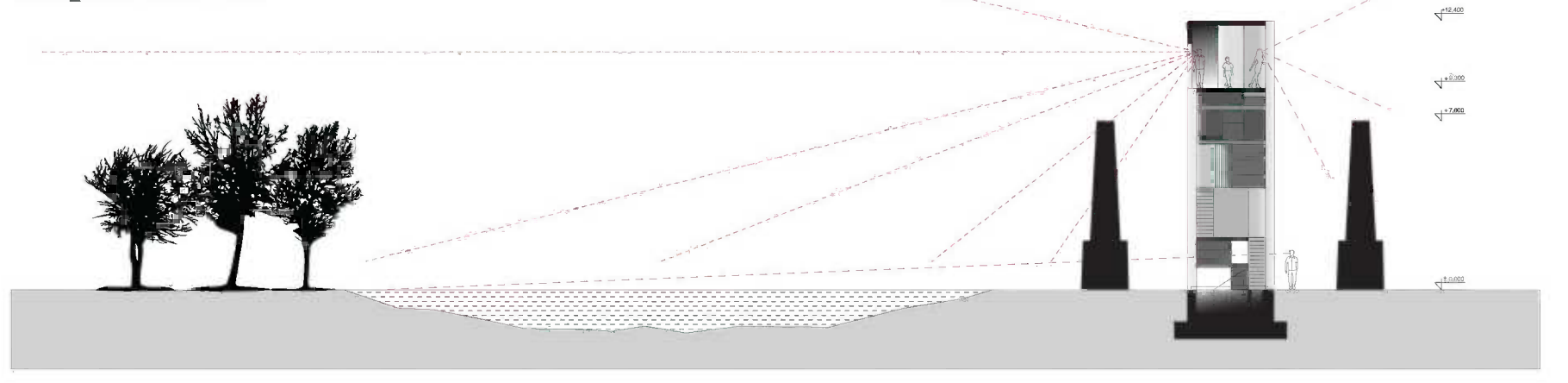
The long and chaotic voyage is full of expectation. The widening of the horizon to „the other side“ via a horizontal chink. This is in the middle cut into two by a vertical chink, which turns attention back up to the tower and all the top part of the area.



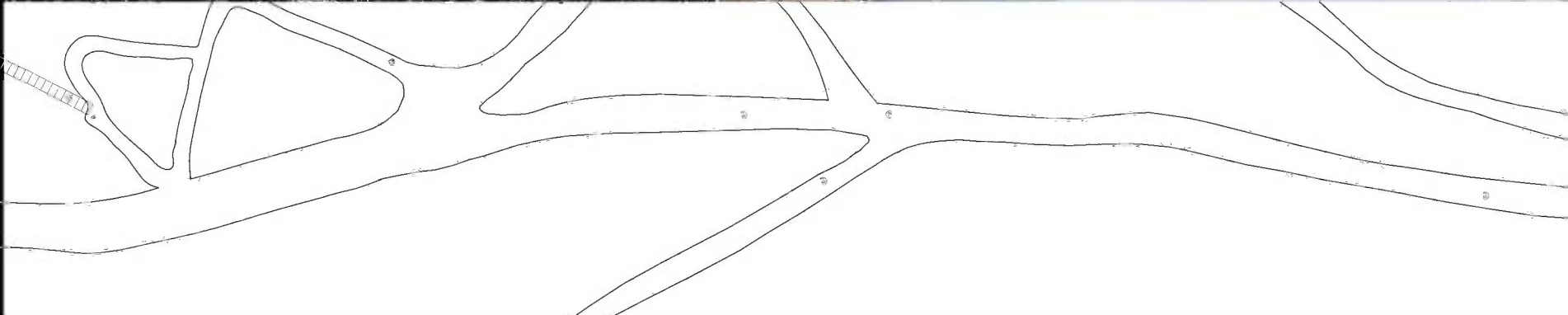
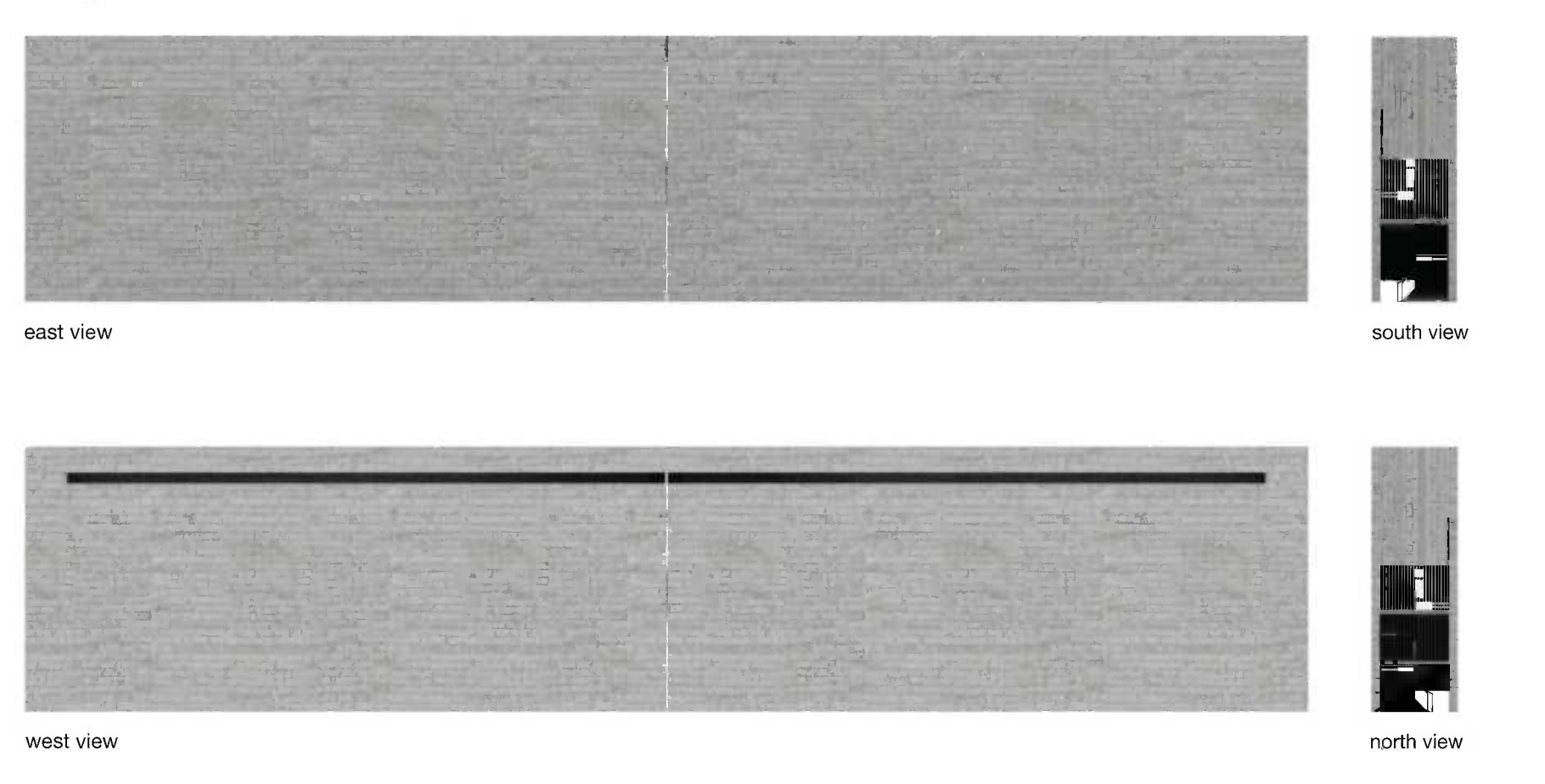
WALL



WALL_cross section 1:300

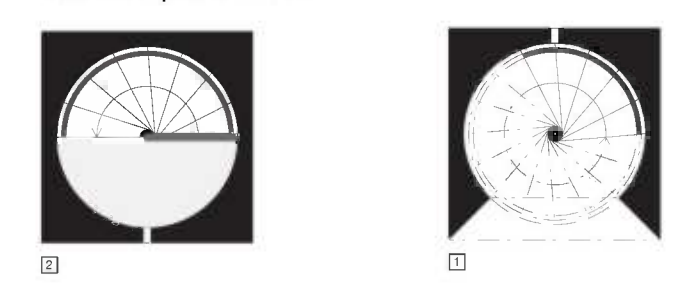


WALL_views 1:300

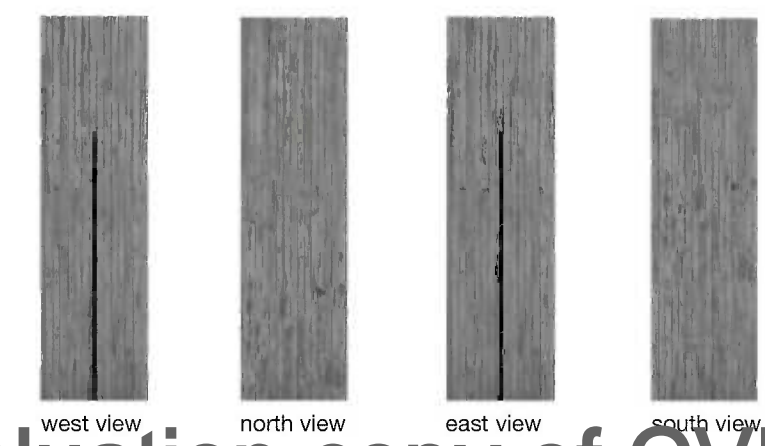


The tower directs looks of people to a straight line of pylons leading down to the wall and the river.

TOWER_plans 1:100



TOWER_views 1:200



TOWER_section 1:100

