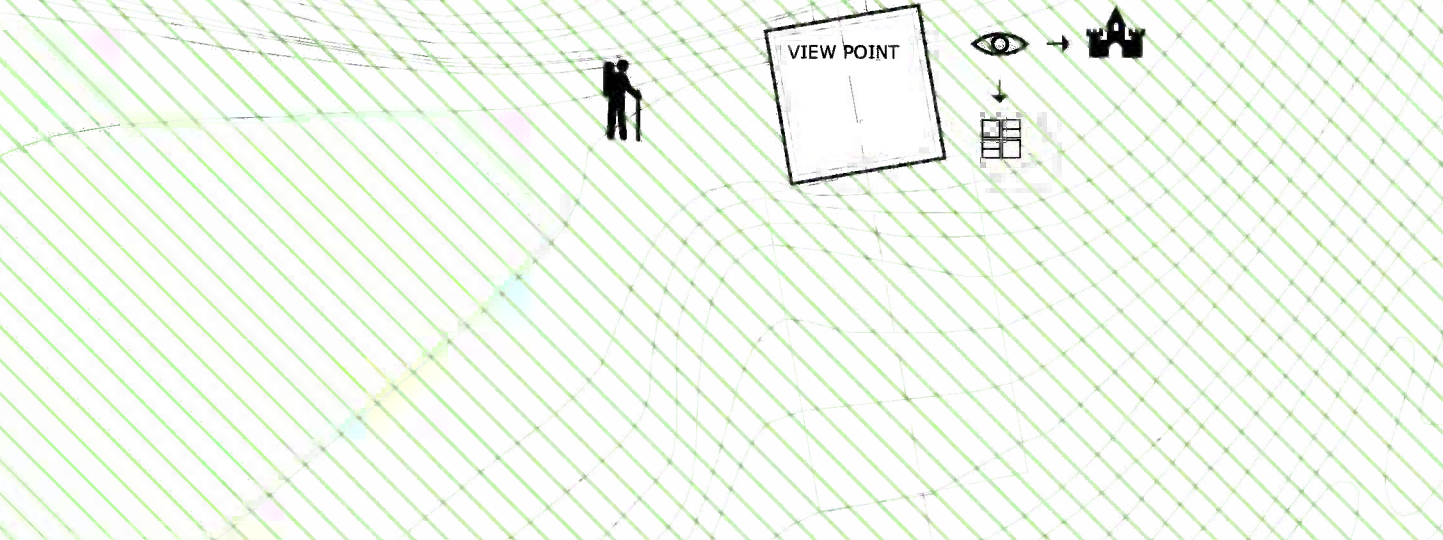


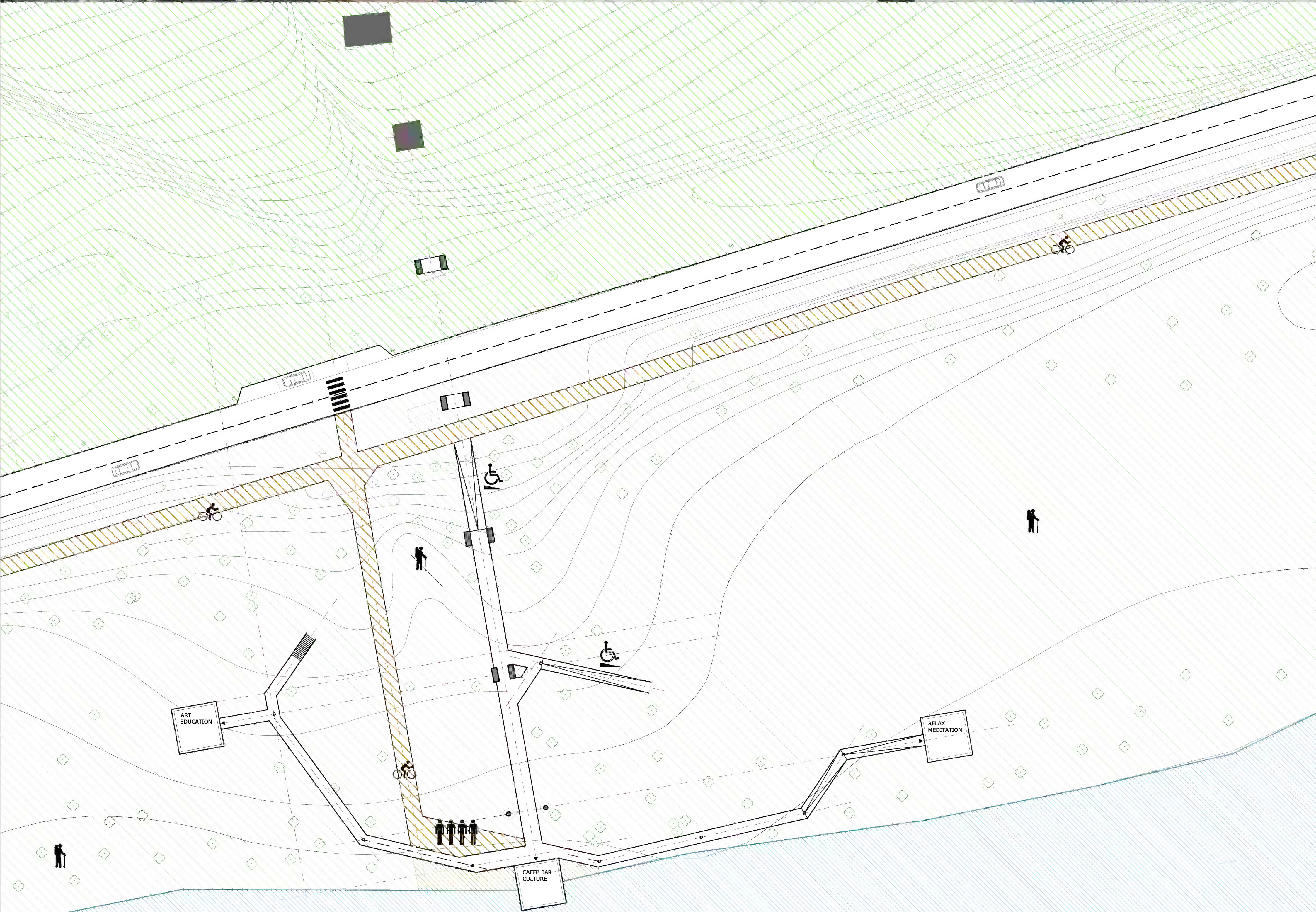
# MEETINGPOINT «4» SANDBERG

The design is based on 4 basic intensions: 1) to respect the nature  
2) to commemorate the technical monument  
3) to provide activities varying from entertainment to recreation  
4) to increase the interest and knowledge about the local area



The meeting point consists of 4 cubical objects. The design and fuction of each cube is different. The objects' natural color is in symbiosis with the surroundings. Access for disabled is provided by a metal ramp made of lattice-railing and metal grid. The main ramp is supported by 4 pylons. the secondary ramps are supported by lattice masts. All objects are raised above ground level to avoid frequent flooding in the local area. 3 cubes are located between the bicycle lane and the Morava river. The last cube is located at the ending of the gone cable-railway, it is an object of optical commemrance of the technical monument.

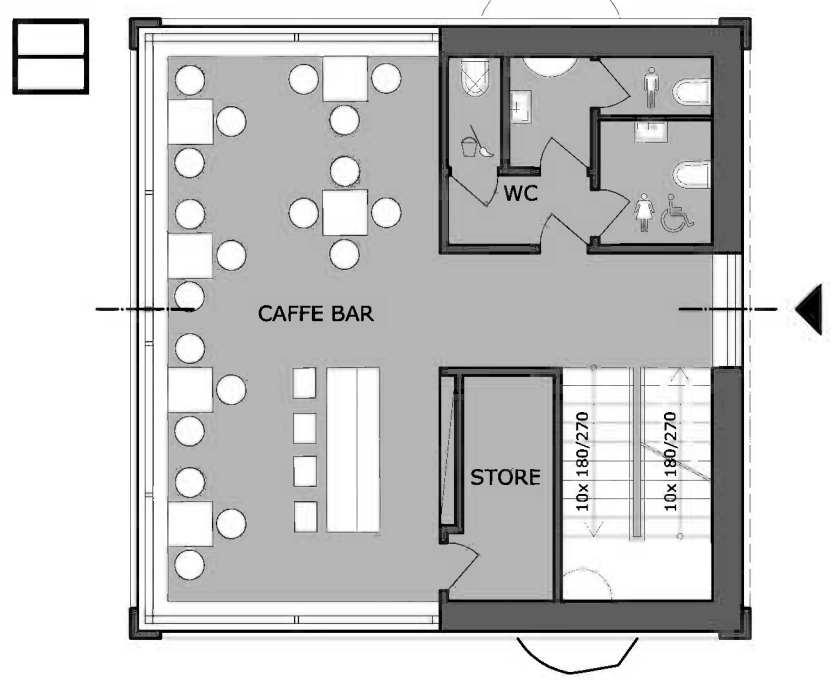
VIEW POINT is an empty, clear frame. It is located at the ending of the gone cable-railway, on the top of the Sandberg Hill. It is a place for tourists to have a rest, a viewpoint with a telescope to look at the Devin Castle, the Meeting point and Markthof in Austrian inland.  
CAFE BAR, CULTURE is from made of YTONG LAMBDA block bricks, covered with corten metal. Social services and a Caffe bar with 23 seats are located in ground floor. The upper terrace can be roofed by simple cover, and its primary function is to provide a multifunctional, flexible area for concerts, drama and workshops. Eventually, it can be used as a space for rest and relaxation.  
ART, SEMINAR SPACE is also made of YTONG LAMBDA bricks. White stuke is used for facade layer. There is a storage space in the floor of the whole cube used for events being run inside the object, storage for chairs and used technology. The space can be easily divided by movable perution walls into various exhibition spaces. Or it can be completely separated to 2 parts.  
The space is used for exhibitions, lectures and projections.  
RELAX and MEDITATION is composed of timber beams, it creates an unusual experience of various tiny spaces used for sitting or lying down. The contact with timber and lighting effects encourage the visitors to have a rest and relax.



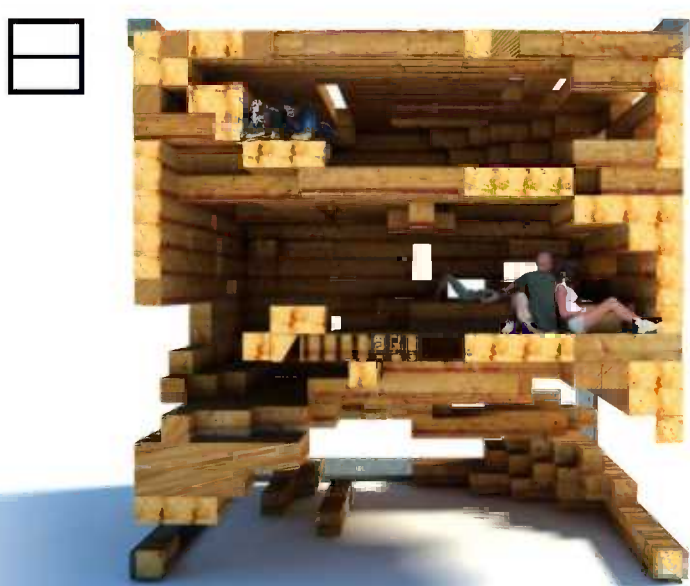




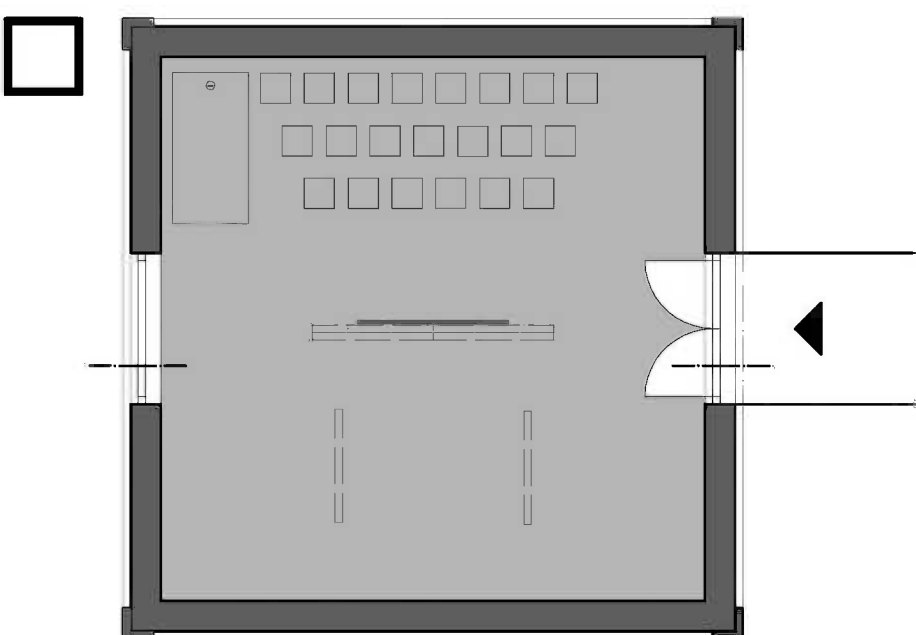
CAFE BAR, CULTURE



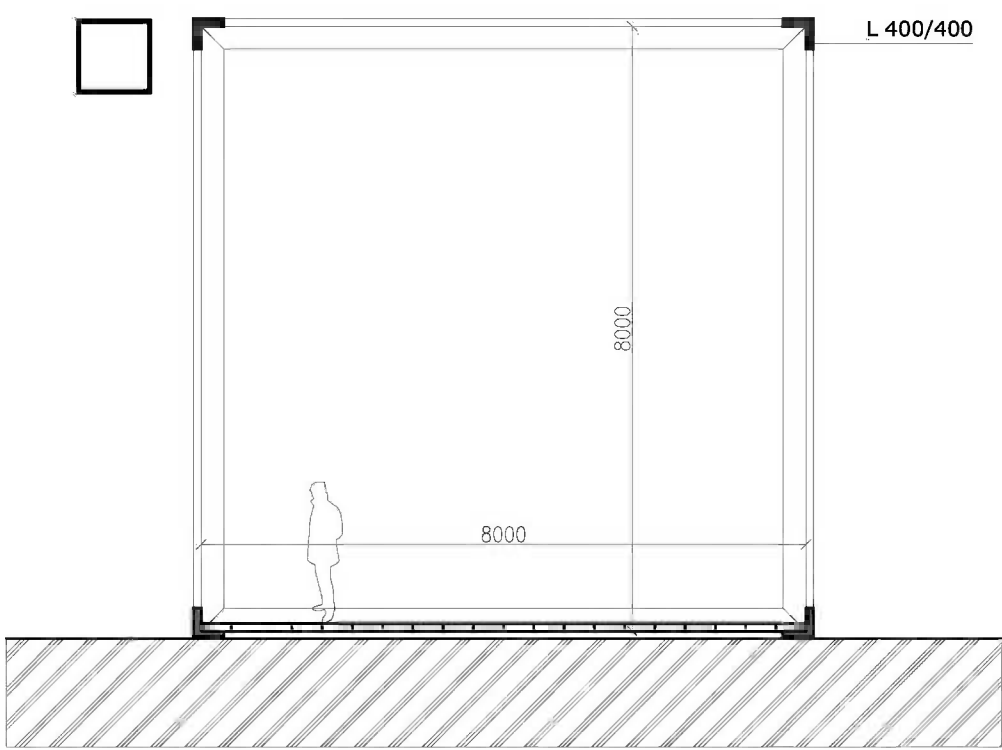
RELAX, MEDITATION



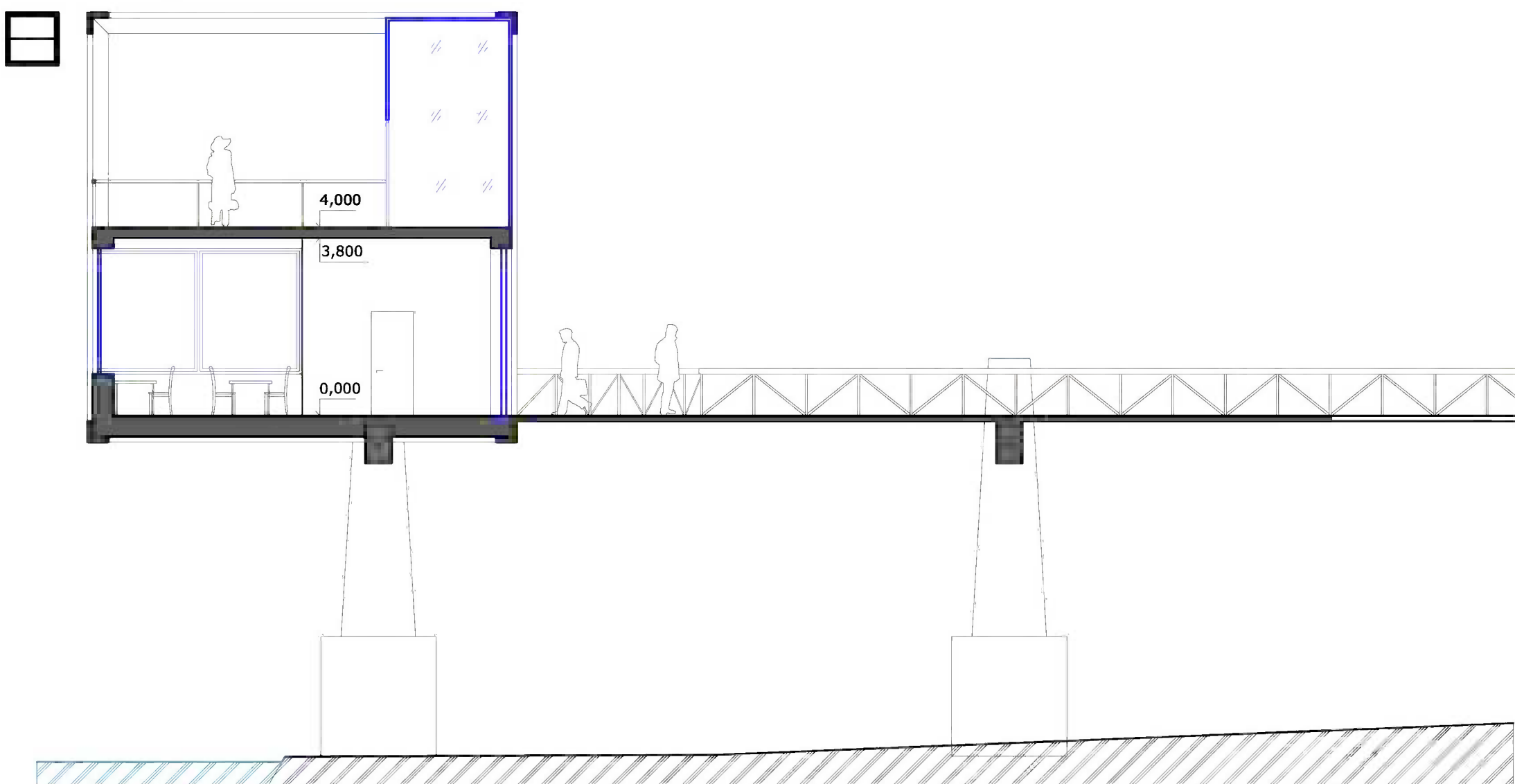
ART, EDUCATION



VIEW POINT



CAFE BAR, CULTURE



ART, EDUCATION

