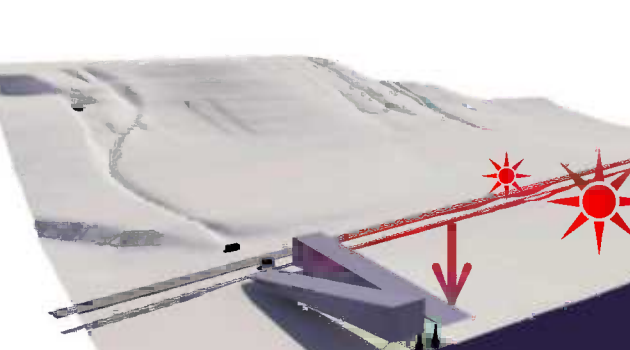
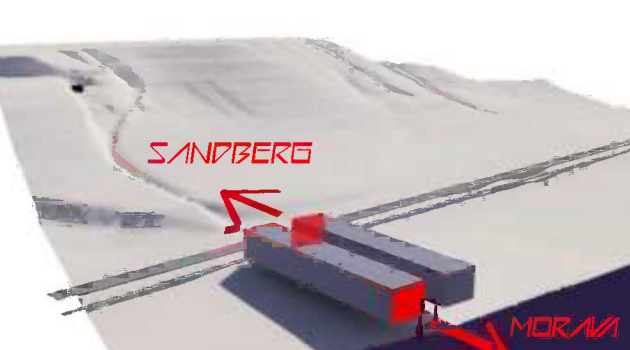
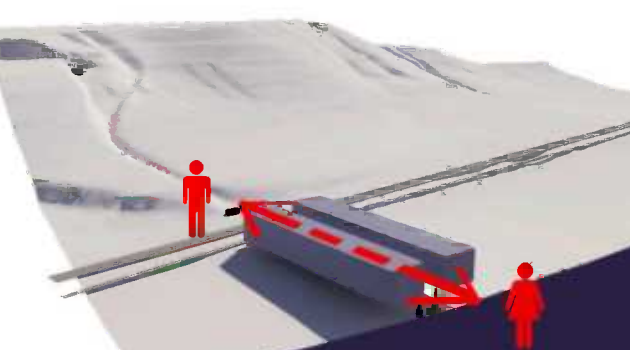
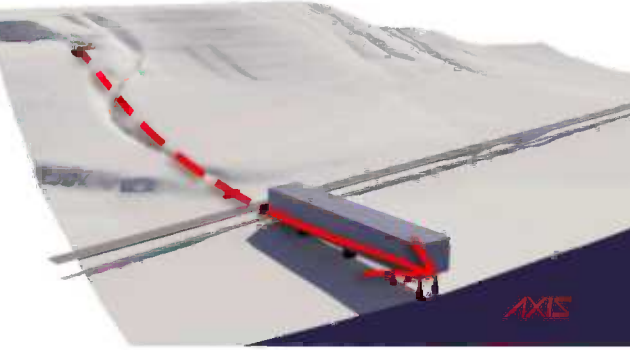




# MEETINGPOINT "4" SANDBERG



## DESIGN MOVES



### 1. GENIUS LOCI

The remained pylons of the telepher line - testimony of the site history.  
**REVIVAL**  
Reviving the site by designing above the pylons.

### 2. RELAXATION

Connect Sandberg, the place of stunning views, with the bank of Morava River, the perfect place for having a rest.

### 3. NATURE

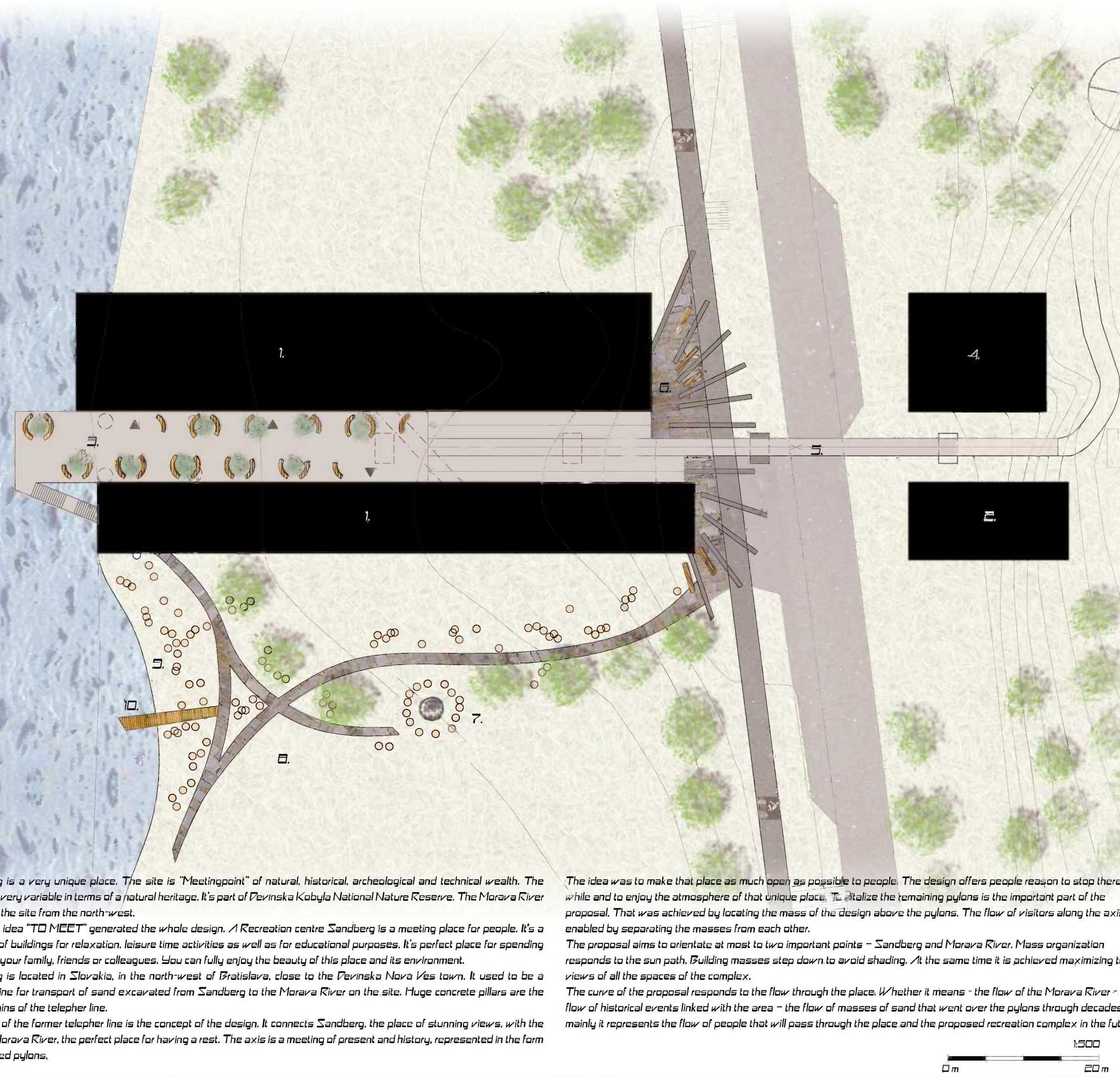
Orientate the design to Sandberg and to important historical points.

### 4. SUNPATH

Organize the masses in order to avoid shading. At the same time is achieved maximizing the views of the complex.

### 5. FLOW

Morava River  
History  
People



Sandberg is a very unique place. The site is "Meetingpoint" of natural, historical, archeological and technical wealth. The locality is very variable in terms of a natural heritage. It's part of Pevniska Kobyla National Nature Reserve. The Morava River encloses the site from the north-west.  
The main idea "TO MEET" generated the whole design. A Recreation centre Sandberg is a meeting place for people. It's a complex of buildings for relaxation, leisure time activities as well as for educational purposes. It's perfect place for spending time with your family, friends or colleagues. You can fully enjoy the beauty of this place and its environment.  
Sandberg is located in Slovakia, in the north-west of Bratislava, close to the Pevniska Nova Ves town. It used to be a telepher line for transport of sand excavated from Sandberg to the Morava River on the site. Huge concrete pillars are the only remains of the telepher line.  
The axis of the former telepher line is the concept of the design. It connects Sandberg, the place of stunning views, with the bank of Morava River, the perfect place for having a rest. The axis is a meeting of present and history, represented in the form of remained pylons.

The idea was to make that place as much open as possible to people. The design offers people reason to stop there for a while and to enjoy the atmosphere of that unique place. To utilize the remaining pylons is the important part of the proposal. That was achieved by locating the mass of the design above the pylons. The flow of visitors along the axis is enabled by separating the masses from each other.  
The proposal aims to orientate at most to two important points - Sandberg and Morava River. Mass organization responds to the sun path. Building masses step down to avoid shading. At the same time it is achieved maximizing the views of all the spaces of the complex.  
The curve of the proposal responds to the flow through the place. Whether it means - the flow of the Morava River - the flow of historical events linked with the area - the flow of masses of sand that went over the pylons through decades. But mainly it represents the flow of people that will pass through the place and the proposed recreation complex in the future...

### 1. EDUCATION

**LAND ART** - Exhibition spaces in the countryside covered against the weather under the ground floors of the recreation complex.

### 2. HISTORY

Info centre and gallery. The gallery is designed for permanent exhibitions of natural, historical, archeological and technical wealth of the area as well as for temporary exhibitions.

### 3. RELAXATION

The place above the pylons, connecting the masses of the recreation centre, invites you to stay in the fresh air in the countryside. The surroundings are large areas with harmoniously shaped landscape. The site belongs to Male Karpaty Protected Landscape Area.

### 4. OUTDOOR SPORTS

Sport equipment and bicycle rental.  
**IN-LINE SKATING**  
Routes suitable for in-line skating.

### 5. HIKING

The footbridge links side of Sandberg with the side of river Morava. There is a dense network of marked tourist paths.

### 6. CYCLING

Parking for bikes covered by the masses of the recreation complex.  
Cycle tracks lead from Czech Republic over Slovakia to Austria.

### 7. RELAXATION

Leisure time activities - barbecues and outdoor feast

### 8. NATURE

Grassy areas around the invite to have a rest and just relax

### 9. SWIMMING

Bay downstream from pylons offers the possibility of bathing

### 10. WATER SPORTS

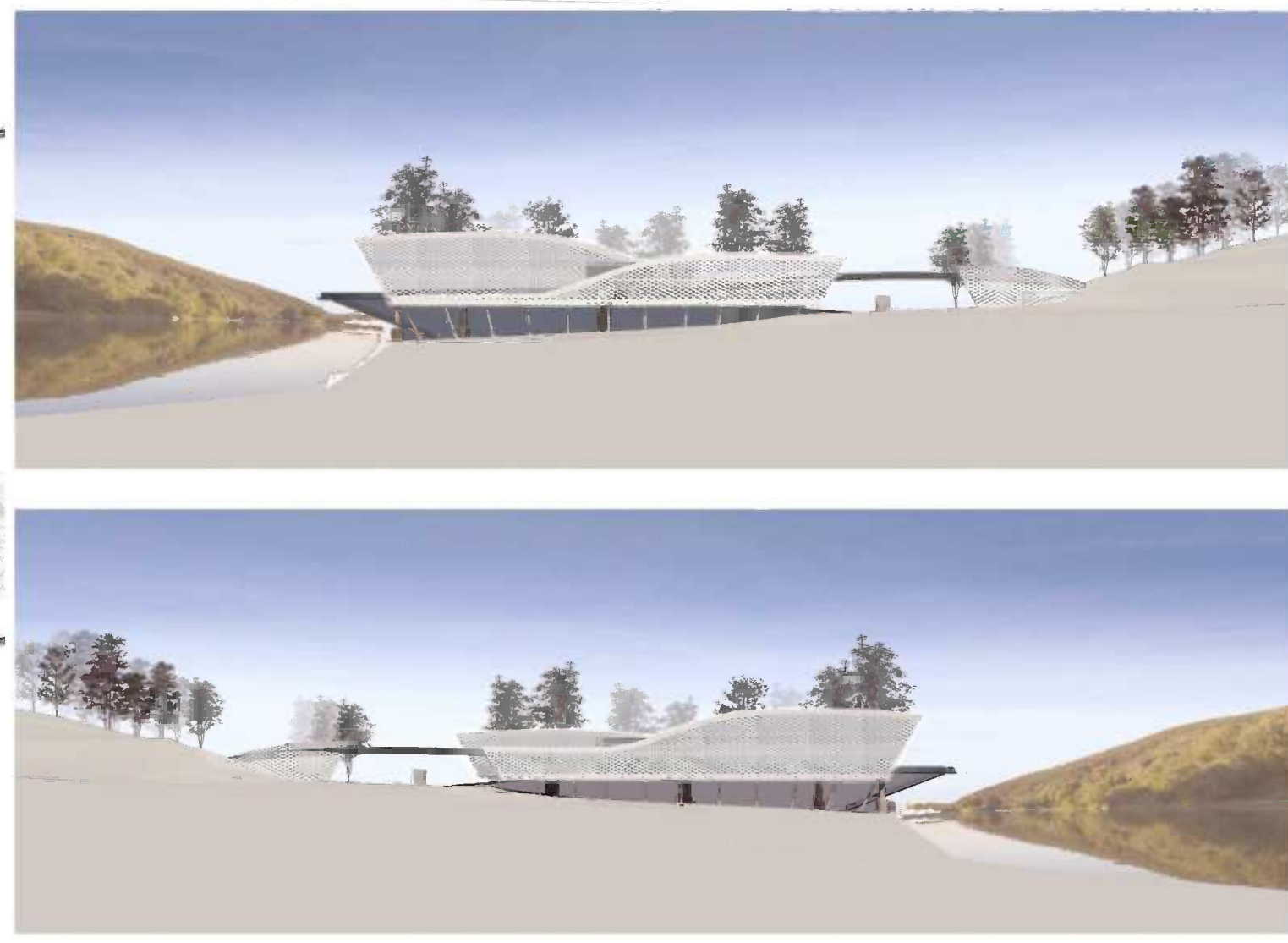
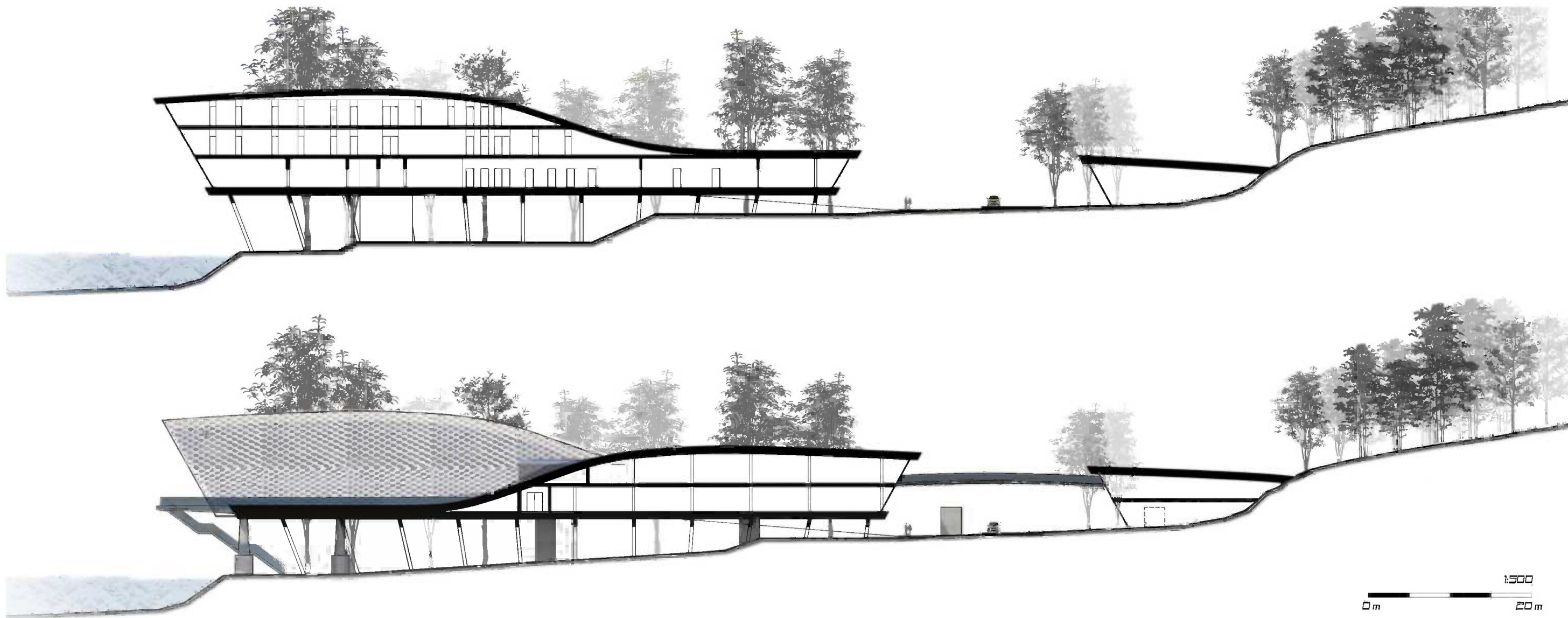
Pier in the bay is ideal for stopping and anchoring passing boats.





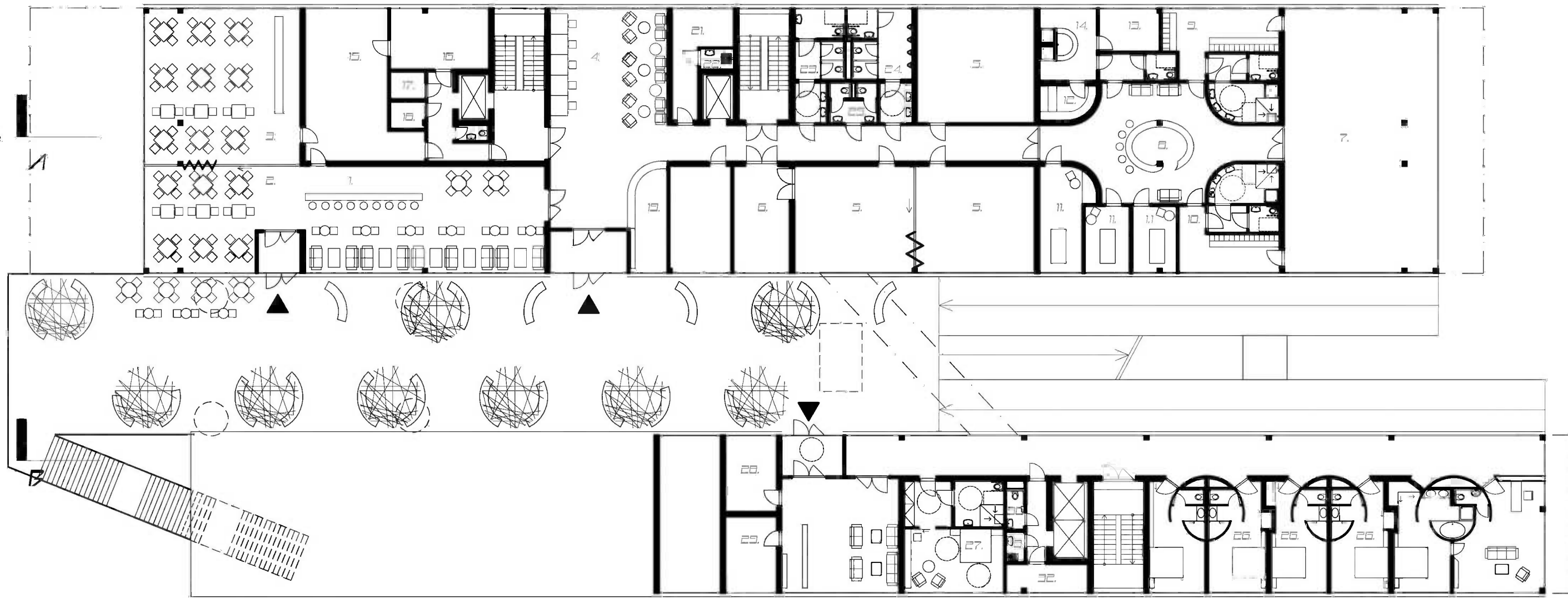
# MEETINGPOINT "4" SANDBERG

583052



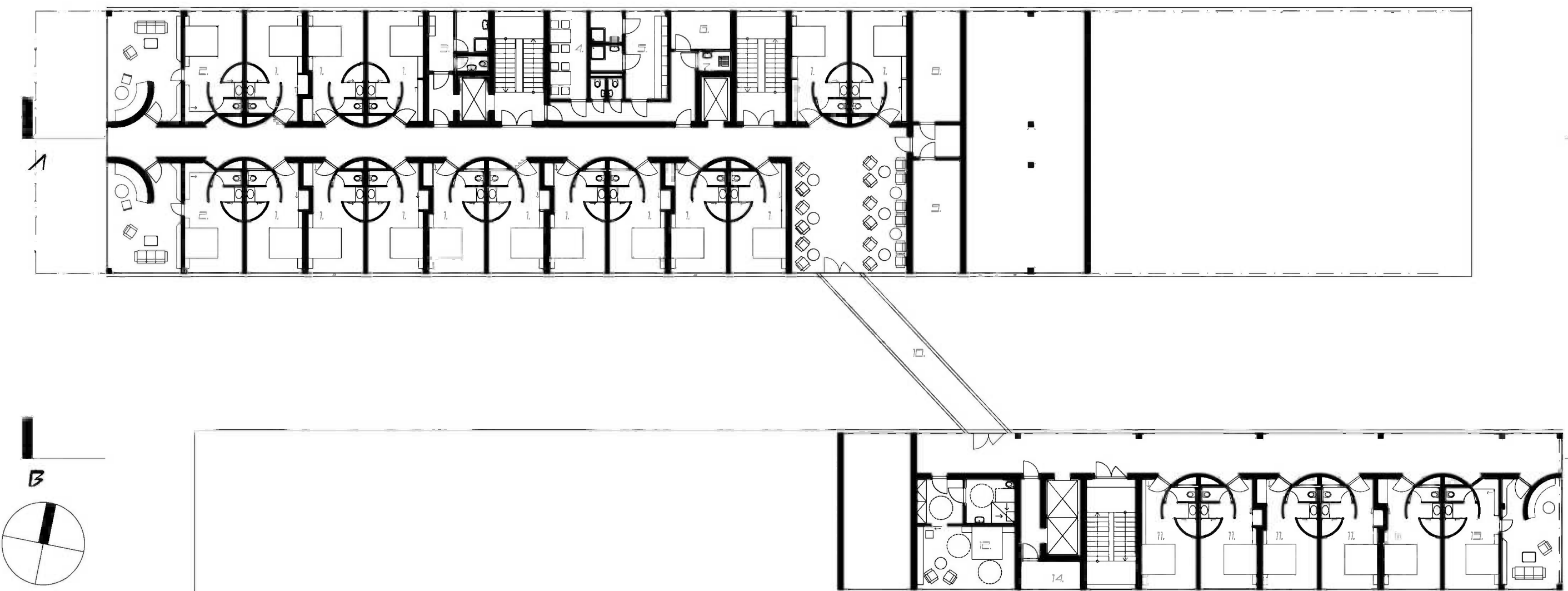
## 1st FLOOR PLAN

- 1. cafe, bar
- 2. restaurant
- 3. dining area for the hotel guests
- 4. internet
- 5. seminar room,  $1 \times 47 \text{ m}^2 \approx 14$  people
- 6. seminar room store and work room
- 7. fitness,  $1 \times 133 \text{ m}^2 \approx 30$  people
- 8. fitness reception
- 9. women's changing
- 10. men's changing
- 11. massage
- 12. sauna
- 13. rest room
- 14. bath & showers
- 15. kitchen
- 16. kitchen store
- 17. packaging
- 18. waste
- 19. reception
- 20. office
- 21. store
- 22. cleaning room
- 23. toilets
- 24. toilets staff
- 25. room for two people
- 26. room for disabled people
- 27. office
- 28. reception
- 29. toilets staff
- 30. cleaning room
- 31. chambermaid's room



## 2nd FLOOR PLAN

- 32. room for two people
- 33. bedroom for two people & livingroom
- 34. changing room
- 35. daily room
- 36. cloakroom - staff
- 37. chambermaid's room
- 38. cleaning room
- 39. services room (air conditioning)
- 40. services room (heating)
- 41. connecting bridge
- 42. room for two people
- 43. bedroom for two people
- 44. bedroom for two people & livingroom
- 45. chambermaid's room



## 1. CAFE, BAR



## 2. RESTAURANT



## 3. DINING AREA FOR HOTEL GUESTS



## 4. INTERNET PLACE



## 5. SEMINAR ROOM

- $1 \times 47 \text{ m}^2 \approx 14$  people
- 6. seminar room store and work room



## 7. FITNESS

- $1 \times 133 \text{ m}^2 \approx 30$  people
- 8. fitness reception
- 9. women's changing
- 10. men's changing



## 11. MASSAGE



## 12. SAUNA

- 13. rest room
- 14. bath & showers



## PLAN OF A TYPICAL ROOM FOR TWO PEOPLE

1:100  
0 m 5 m

