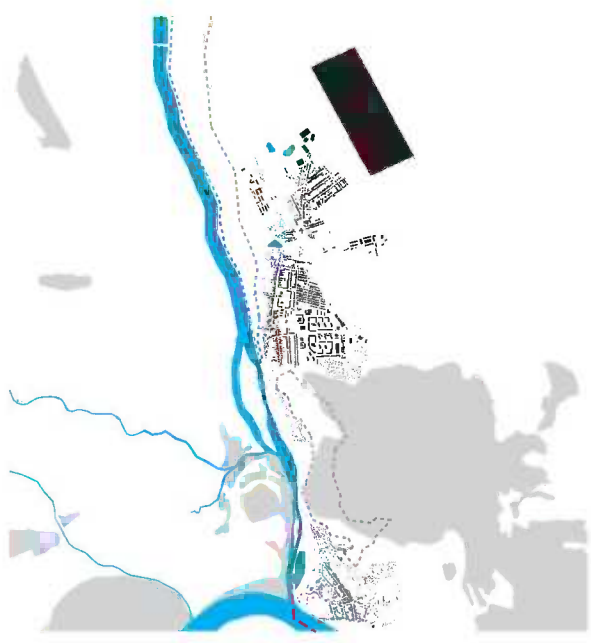


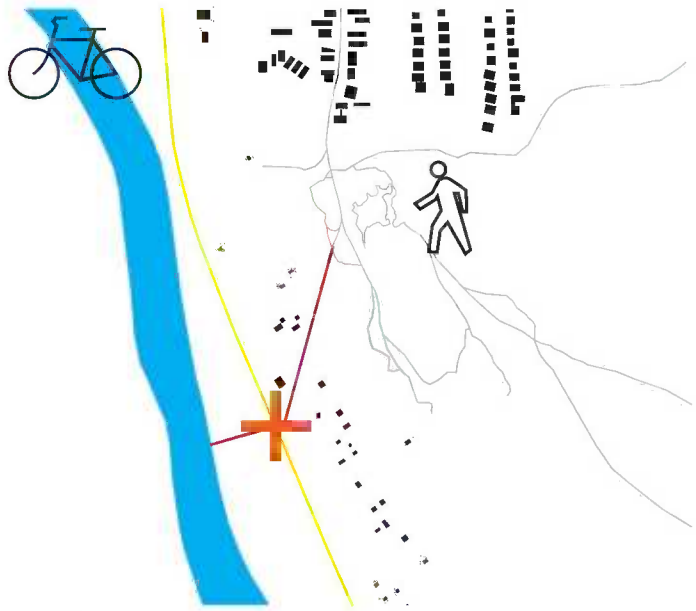
TRAFFIC
motor-vehicle traffic symbolized with red
railway transport demonstrated with black dashed line



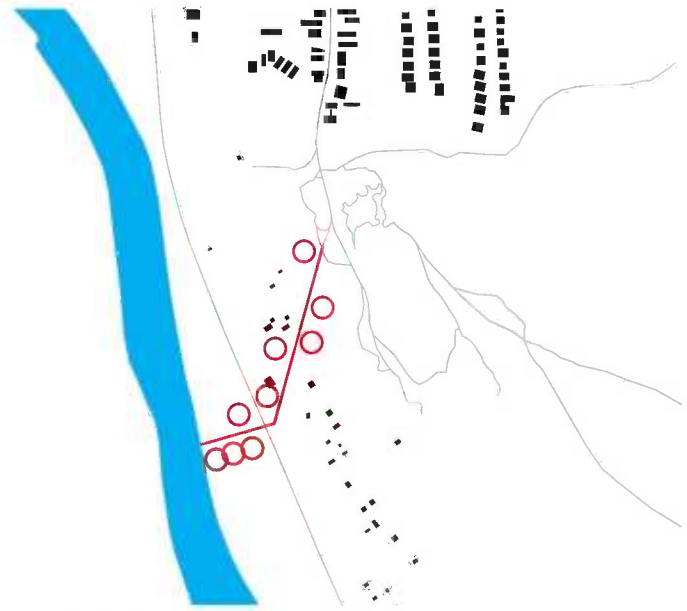
VEGETATION
gray area symbolizes woods
dashed line represents protected region



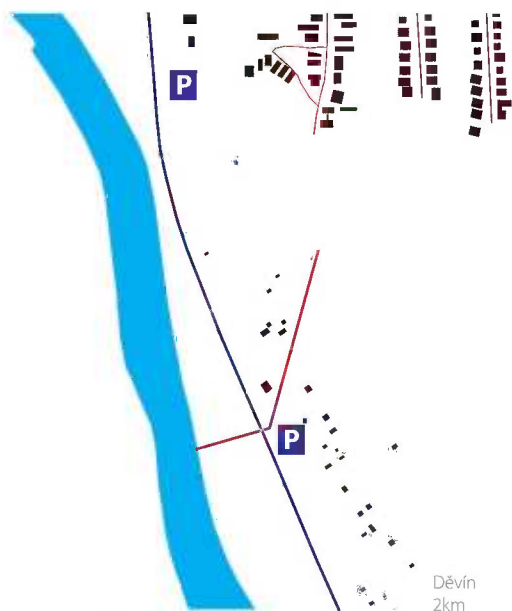
CITY VS. RIVER
project connects the city and the river Morava



CROSSING
in the cross of current cycle track and footway leading from Děvín to Děvinská Nová Ves
and designed footway appears crystalline point - coffee house



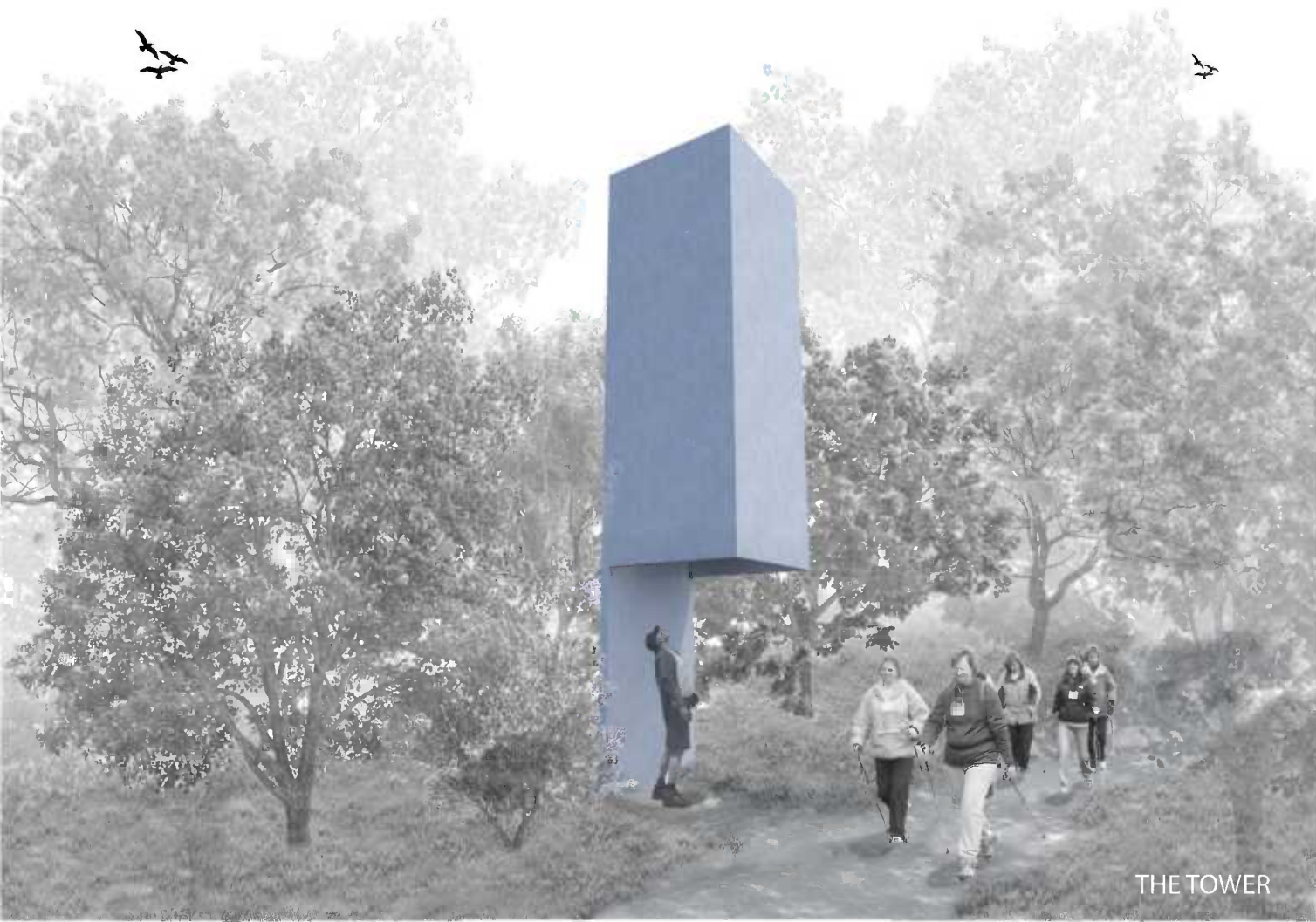
PATH AND PLACE
the designed path is beehung with points of arrestation,
places to sit and absorb the nature and refresh



TRAFFIC
motor-vehicle traffic is symbolized with blue line
few parking spaces are near the coffee house



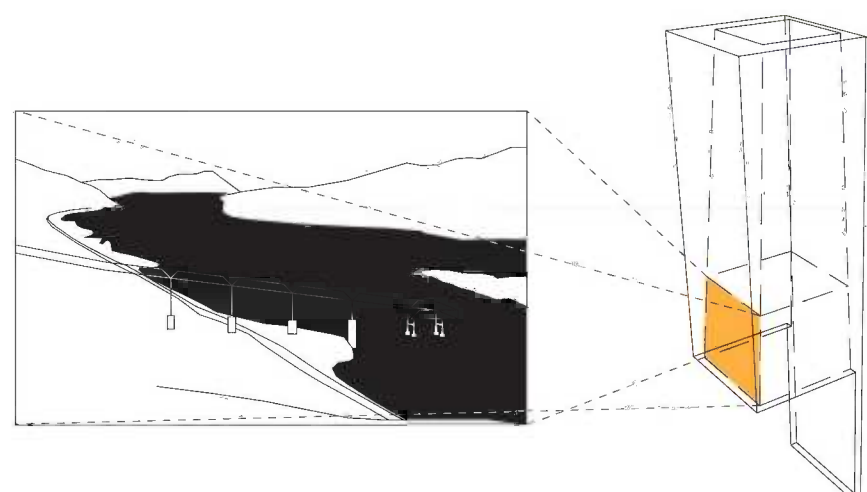
SITUATION
scale 1:2000



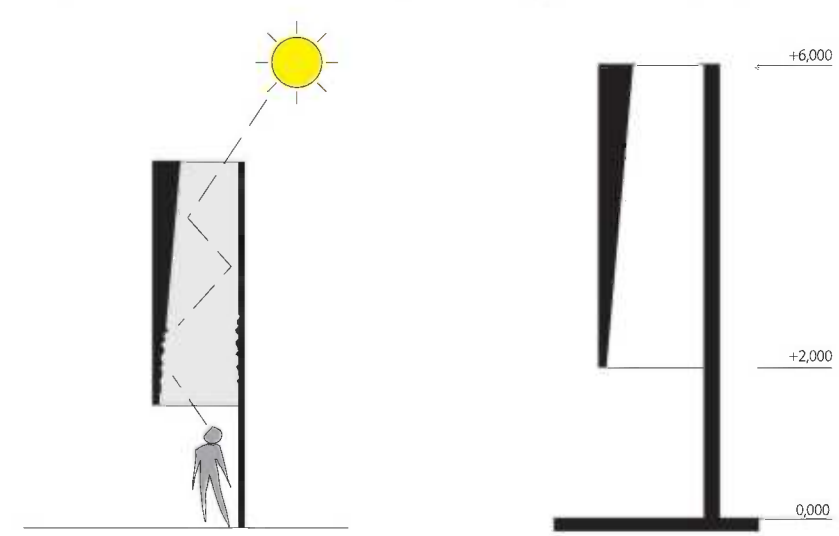
THE TOWER



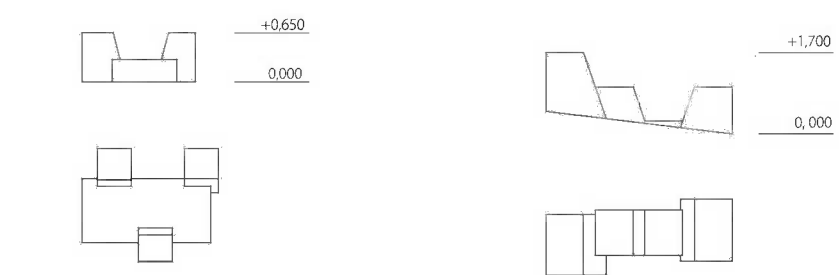
THE REST BOX



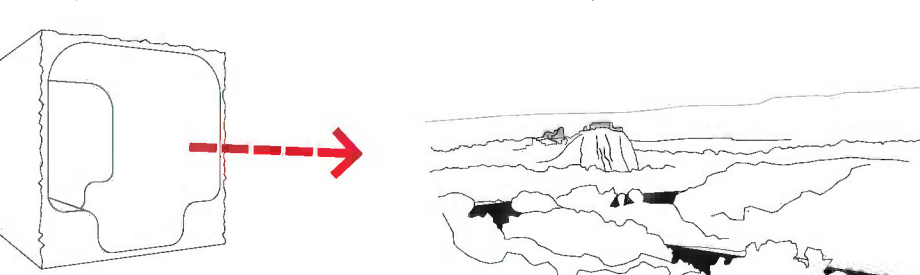
THE TOWER
the inside walls hide reliefs with explanations - showing history, explains the occurrence of pylons,
another relief shows the current state, clears up the condition,
the top of the tower is visible from the footway and foot bridge, it indicates the path up the hill



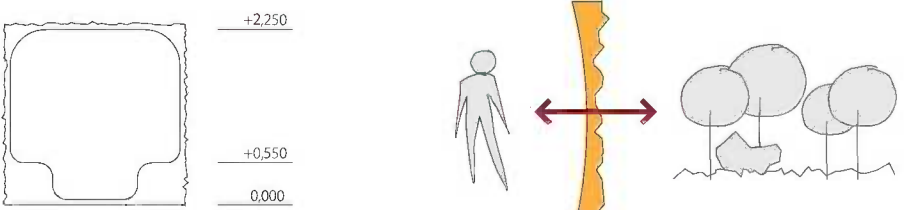
THE RELIEF AND LIGHT
the light coming from the top illuminates
the relief and emphasizes it



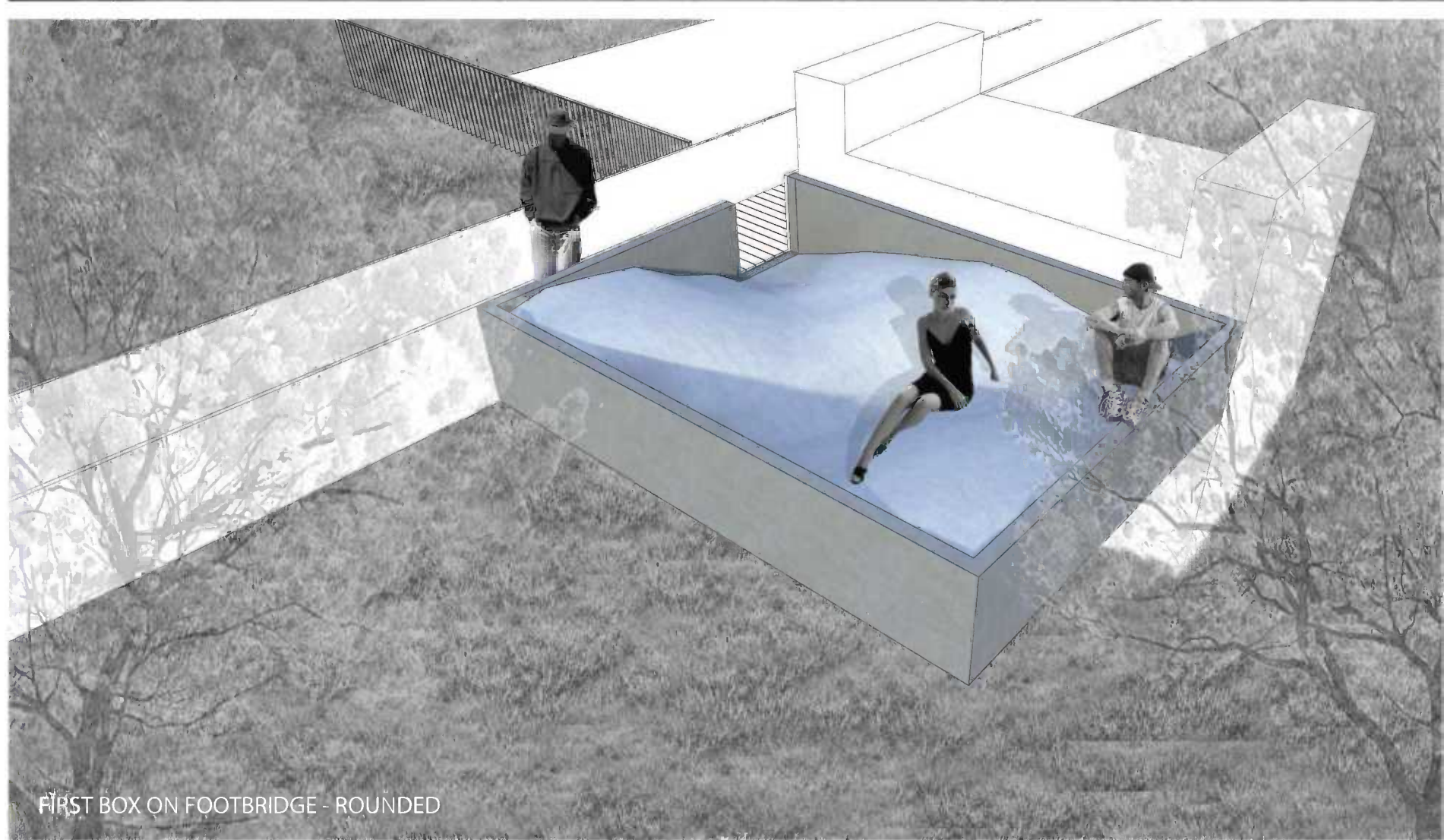
THE BOX
due to its position in the middle of the hill, it offers wonderful landscape views



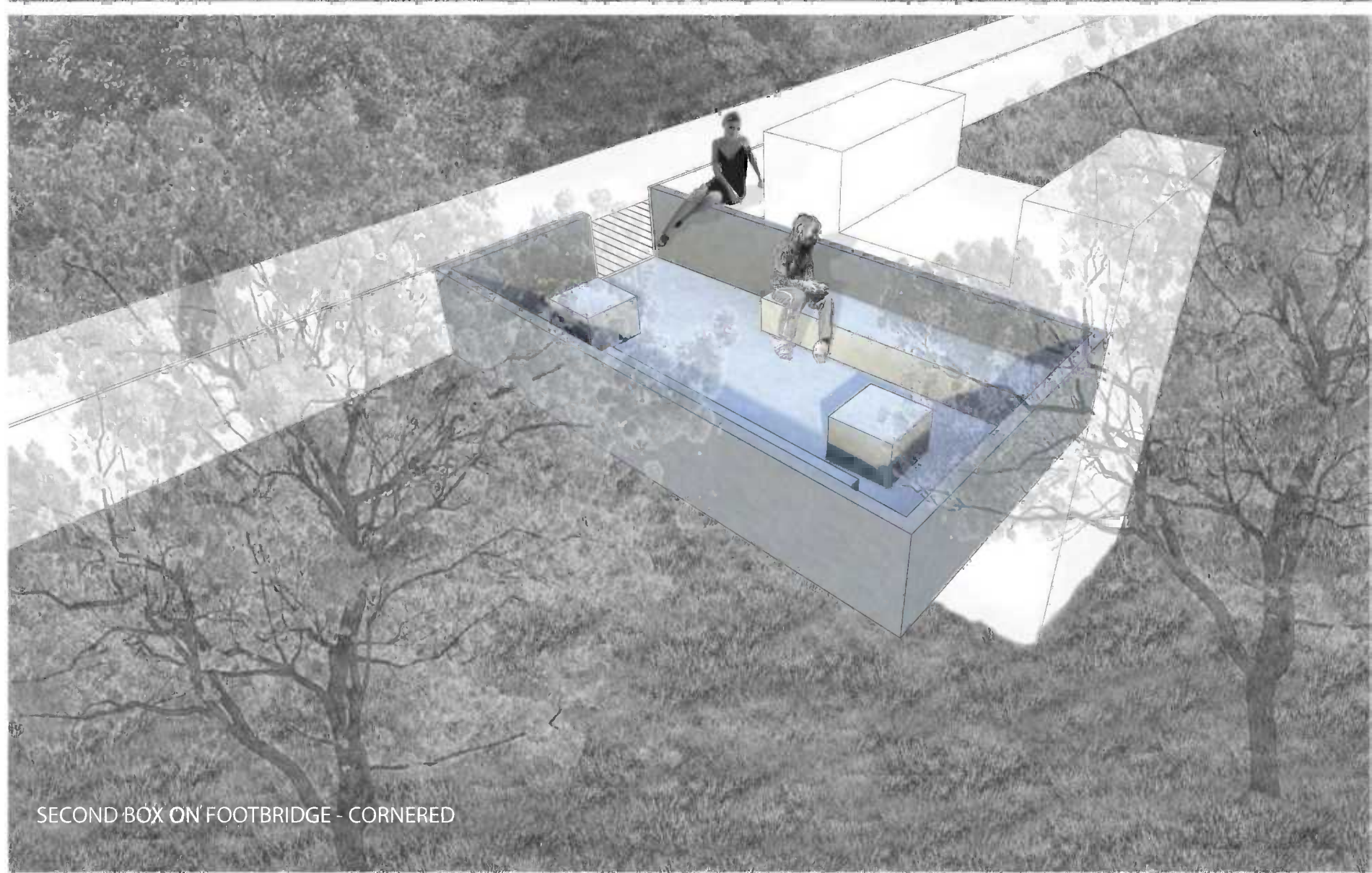
SHARP AND SMOOTH
represents the wildness of nature from outside due to
the sharp surface, which enables the plants to
overgrow and to "vanish" in the opposite is the smooth
surface inside, which is designed for people



FOOTBRIDGE



FIRST BOX ON FOOTBRIDGE - ROUNDED



SECOND BOX ON FOOTBRIDGE - CORNERED



INTRODUCTION

The first question we put at the beginning of our work was, why should we do anything with the pylons? Nature enclosing them is protected by 4th or 5th degree of protection. Road used as a bay-way for drivers heading to Bratislava. Patient work of man is destroying nature in the otherside of the road. Site where we're asked to create something to redefine the pylons is constantly affected by the water floods. The locality of Sandberg hill is a strong point, which offers a lot of pathways and panoramic views towards Slosshof for inhabitants from DNV.

IDEA

We decided to connect DNV through Sandberg with the Morava river by establishing a new pathway. It is going to lead between gardens and finished on foot-bridge attached to the first 4 pylons near the river. It will be highlighted by yellow ribbon made from steel. To made it more attract for lokal inhabitants, we join a set of rest spaces, boxes, to the ribon and footbridge. Each of them is offering a different spatial qualities, less or more prepared for relaxation, chatting or celebrating. Footbridge ends just hanging over the river. In the intersection of designed pathway, road and cycle track is proposed a caffe-house with large terrace. This should support our concept by adding a goal for a walk for hommies and a place to take a rest and have a snack for bikers. In the other side we create a tower showing a relief of map of locality with boxes and a relief showing history of the pylons.

FOOTBRIDGE AND WATER

We are using the pylons as a basement and a primary structure for proposed footbridge and boxes attached to them. This was chosen due to permanent risk of destroying anything created on the land by floods. The second reason was to create a new quality of connection to the River, that cannot by experience on the land. We want to bring a sound of floating river and wind in the trees to the people visiting some of teraces, boxes, we create on the pylons.

CONSTRUCTION Construction of the teraces and conection between pylons and footbridge is created from steel frame construction mixed with structural parapets connected to the pylons. Construction of the footbridge is created from latice girders hidden into the parapets. Caffe-house is created from light steel construction. Basement is proposed from in site cast concrete. Boxes are created from concrete.

MARTERIAL

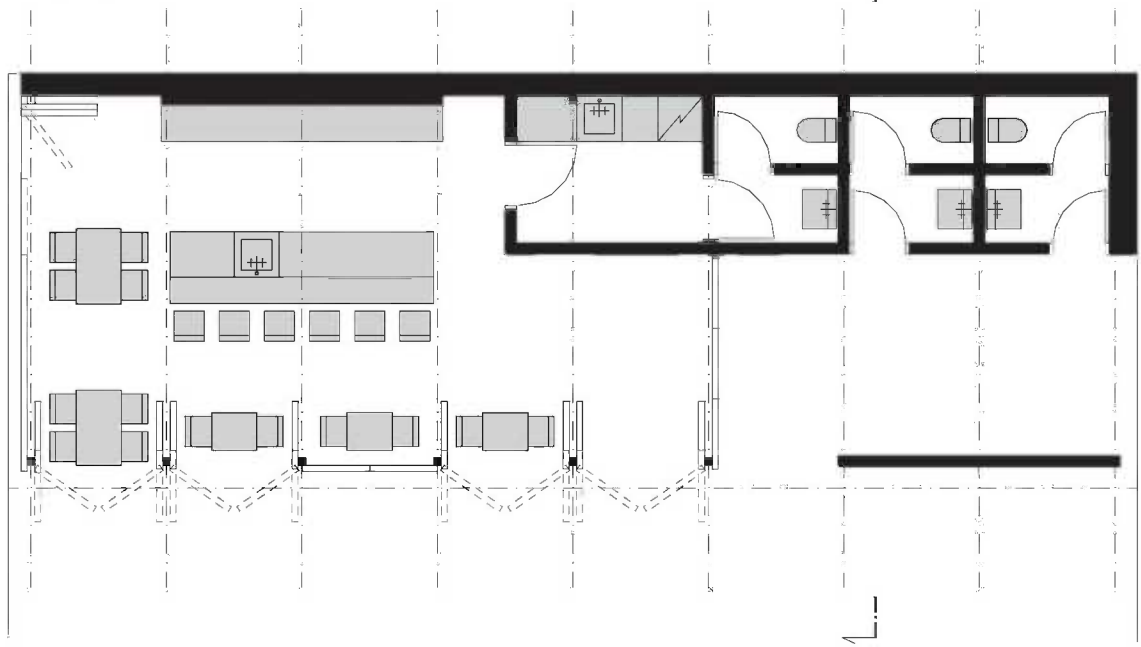
We are using the Corten for sheating the parapets of the bridge and for caffe house. Floor is constructed from wooden floor boards. Interior of the caffe will be finished by usind light wood and curtain walls.

168235

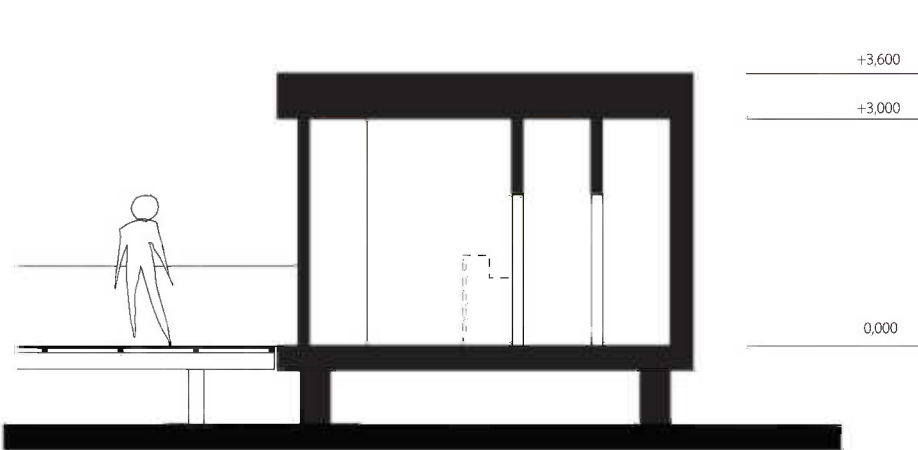


COFFEE HOUSE INTERIOR VISUALIZATION.

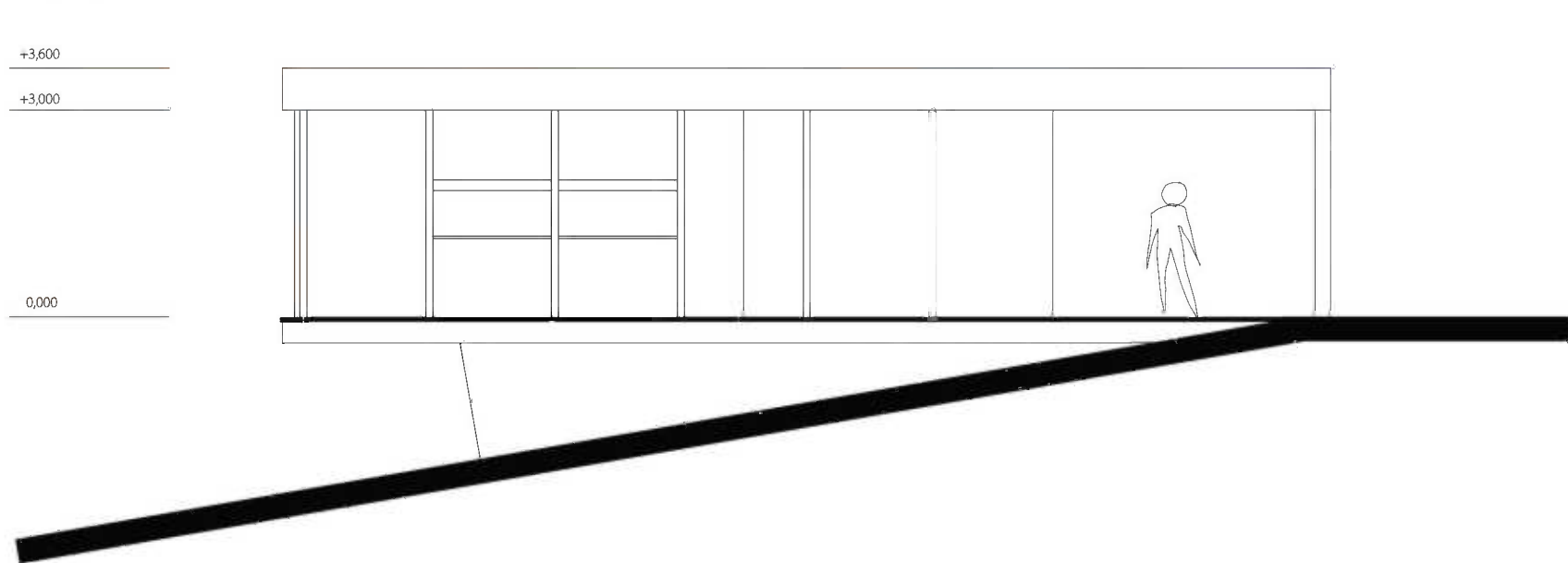
GROUND PLAN
scale 1:100



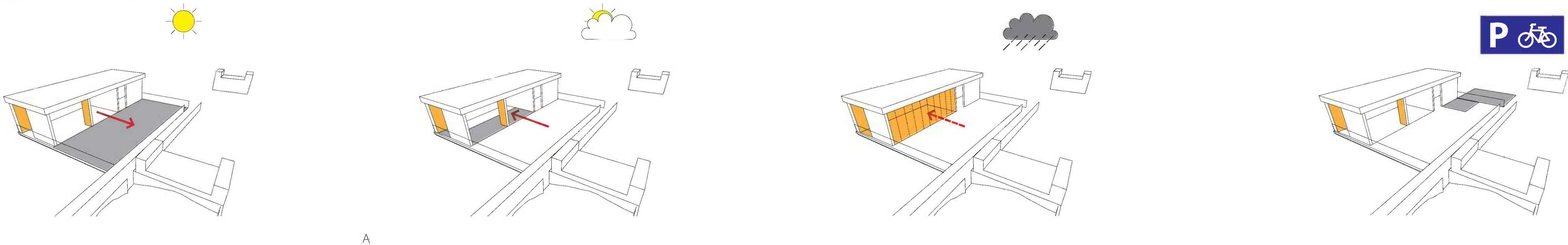
SECTION A-A'
scale 1:100



VIEW
scale 1:100



COFFEE HOUSE AND WEATHER
the utilization of the coffee house depends on weather,
project calculates with variants of usage



A

