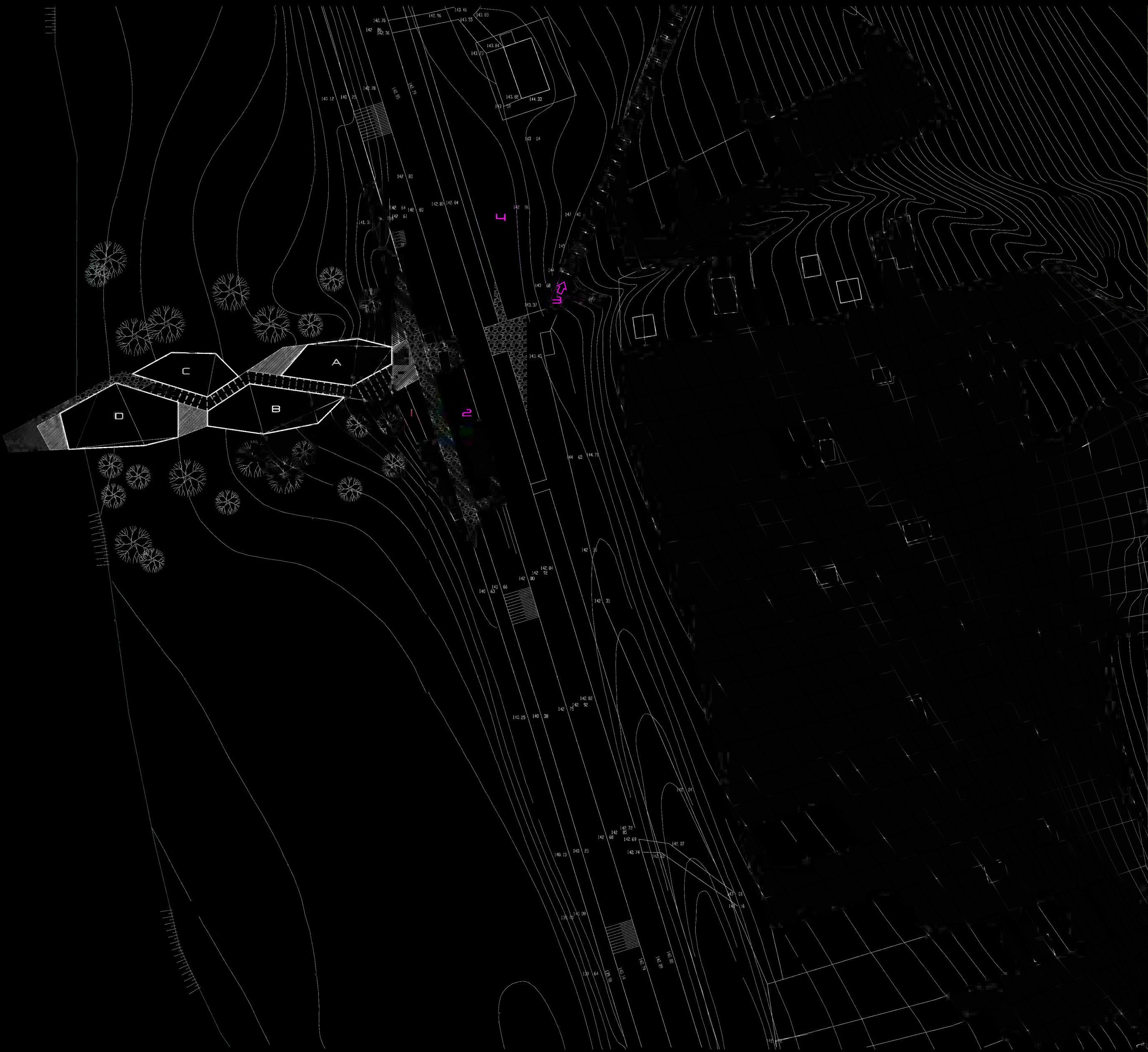


analyses of the location



# MEETINGPOINT 4 SANDBERG

xella competition 09/10

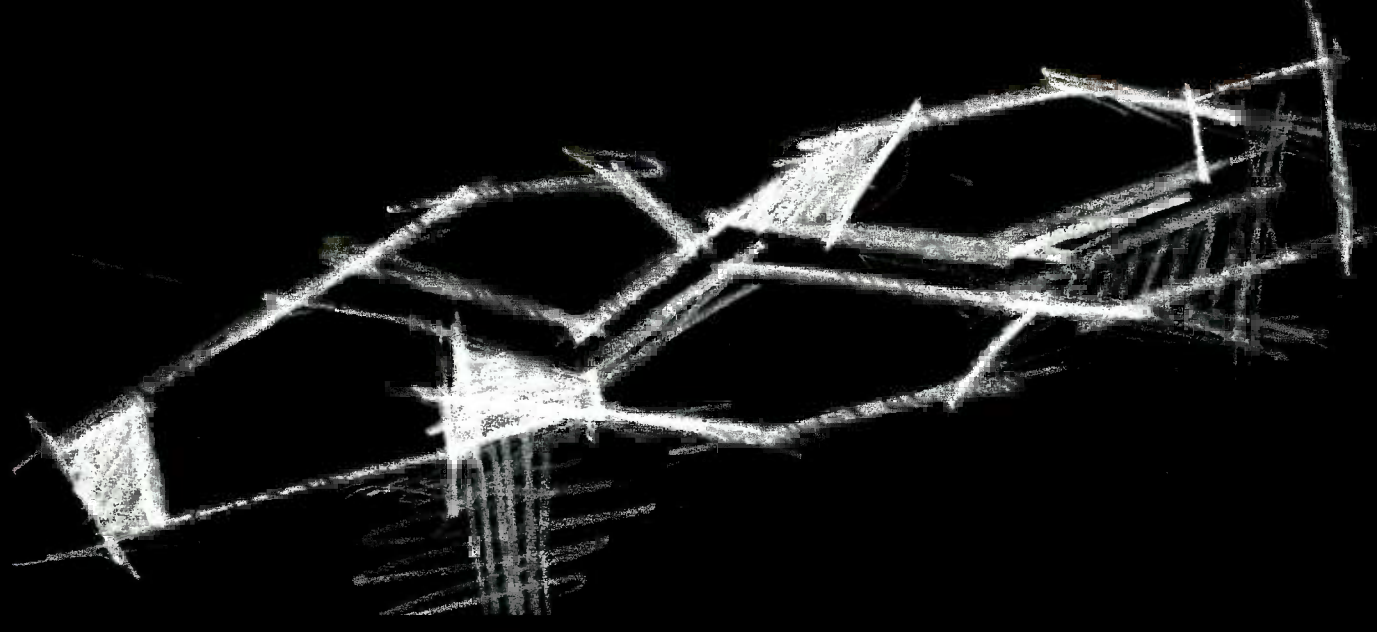
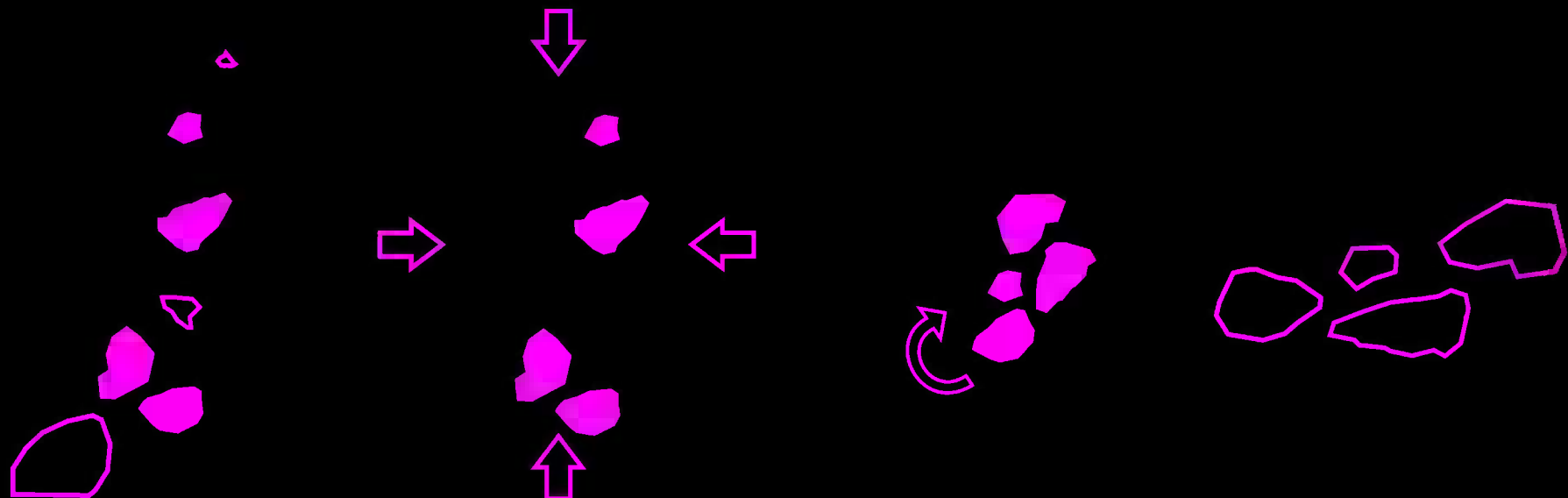


- 1 STORAGE PLACE FOR BICYCLES UNDER RAMP
- 2 PARKING
- 3 PATH TO SANDBERG
- 4 AREA FOR POSSIBLE SKATE PARK

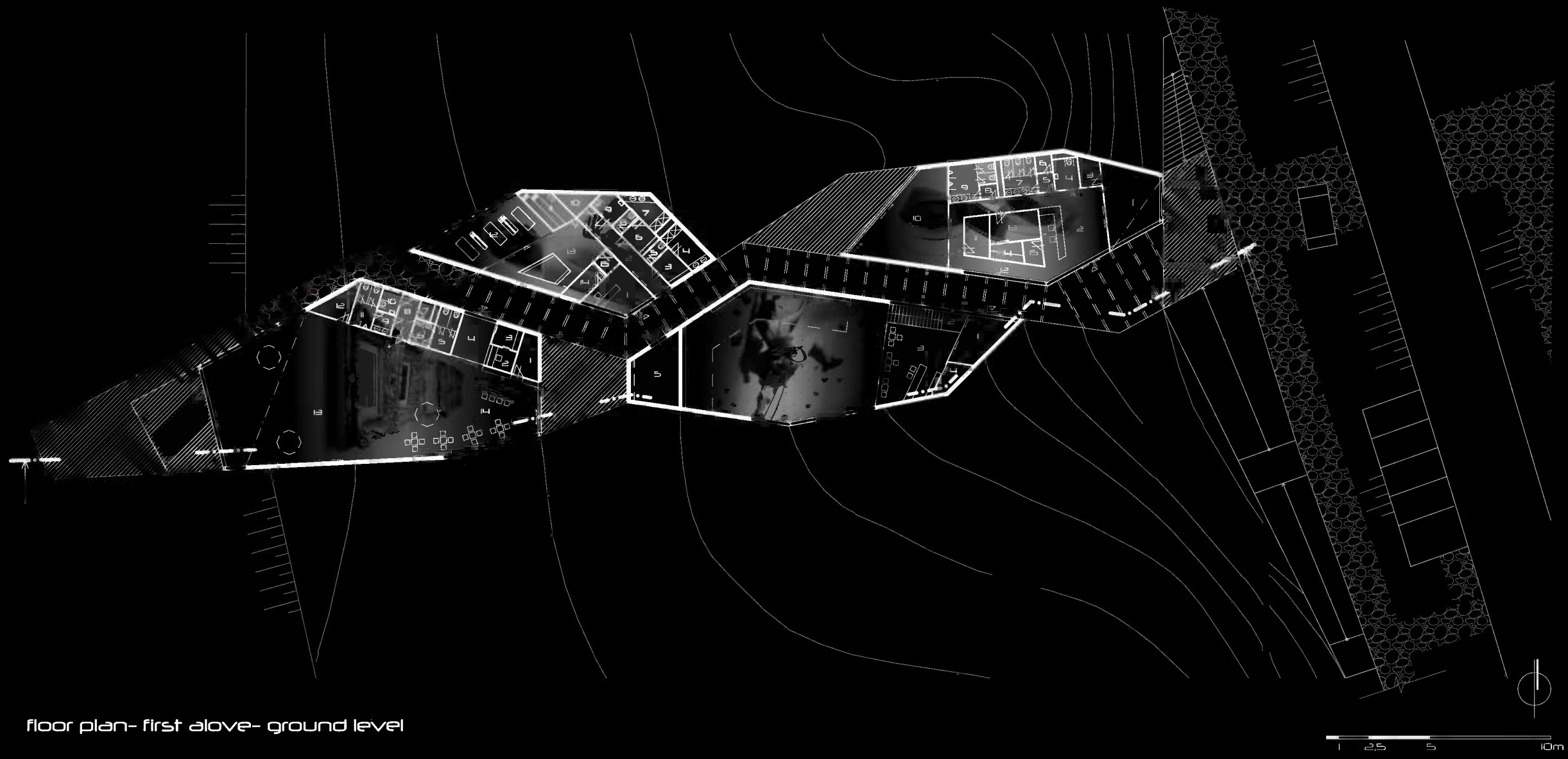
site plan



THE PAVILIONS WERE SHAPED LIKE BROKEN ROCKS, WHICH LIE ON THE SHORE OF THE RIVER NEARBY THE PILLARS. OUR INTENTION WAS TO COMPOSE THE „4 SYMBOLS“ INTO THE PROJECT, WHICH IS PRIMARILY CENTERED ON THE FORMS OF RELAXATION. THE FUNCTIONS OF THE FOUR PAVILIONS ARE: KNOWLEDGE (PAVILION A), MOTION (PAVILION B), MEDITATION (PAVILION C) AND CULTURE (PAVILION D.)



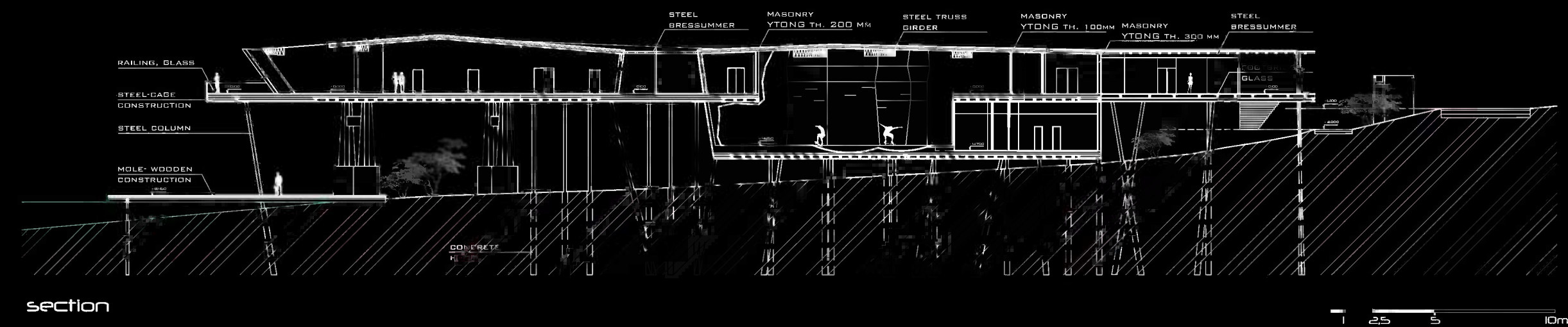




Pavilion A		
1	Workshop	24.16
2	Entry, Info	33.64
3	Storage	3.86
4	Handicap Toilet	5.00
5	Lobby	1.55
6	Cleaner	1.81
7	Toilet Women	8.10
8	Lobby	1.54
9	Toilet Men	3.88
10	Projection, Auditorium	42.04
11	Storage	22.23
12	Corridor	9.51
13	Guests' Room	3.77
14	Kitchenette	3.83
15	Storage	3.02
Pavilion B		
1	Entry	12.31
2	Stair Case	9.51
3	Corridor	3.77
4	Storage	3.83
5	Technical Furnishing	49.70
Pavilion C		
1	Entry	12.36
2	Corridor	13.70
3	Dressingroom Women	4.22
4	Hygiene Women	7.02
5	Toilet Women	1.80
6	Dressingroom Men	4.79
7	Hygiene Men	6.14
8	Toilet Men	1.80
9	Handicap Toilet	4.47
10	Technical Furnishing	3.06
11	Sauna	7.43
12	Massage	35.76
13	Wading Pool	24.87
14	Guest Room	3.95
15	Cleaner	2.20
Pavilion D		
1	Storage	6.05
2	Information	3.00
3	Guest Room	3.51
4	Entry	9.34
5	Toilet Women	6.39
6	Lobby	3.12
7	Cleaner	1.63
8	Lobby	5.22
9	Toilet Men	3.84
10	Handicap Toilet	2.88
11	Storage	6.39
12	Storage	6.12
13	Exhibition Area	161.73
14	Coffee Bar	73.20



Pavilion B		
1	Stair Case	9.51
2	Hall	17.94
3	Storage	6.52
4	Toilet	1.14
5	Hygiene Men	6.35
6	Lobby	6.10
7	Hygiene Women	8.84
8	Toilet	1.14
9	Skate and Climbing for Beginners	179.34



„Architecture begins, where the whole environment is visualized.“

Philosophy

Our intention was to compose the „4 Sybology“ into the project, which is primarily centered on the forms of relaxation. The functions of the four pavilions are: Knowledge (Pavilion A), Motion (Pavilion B), Meditation (Pavilion C) and Culture (Pavilion D.) The project connects natural with cultural, it has an integrating character and it is the place for meetings. The four seasons reflected by nature, step into the interiors thru big glass windows and skylights.

Accrued from analyses of the environment, we nipped on to the summary, that the designed building would be the accent of own surroundings, in the course of shaping we clutched for unconventional shapes.

Concept

In the course of shaping we were inspired by the dynamics of the old Telpher line, which was transporting sand from the nearby Sandberg. The building consists of four pavilions joined with a footbridge. The pavilions were shaped like broken rocks, which lied on the shore of the river nearby the pillars. The footbridge indicates an atmosphere of vagrancy in the forest with a mission to gradually discover the secrets of the nature. The building disposes with big outdoor surfaces, which are surrounded by the forest. The building stands on four pillars and on gently turned, subtly steel columns, which almost disappear between the trees. Walking on the shore of the river under the building, the steel columns appear like the boles of the trees, sensible composed into nature.

By the choose of materials we were fixated on natural materials like sandstone (facing used on facades), glass (big glass surfaces enabling visual contact with the surroundings) and steel in the carrier units. As a filling material we used masonry ytong, thickness 300, 200, 100 mm.

Disposition

As it was mentioned, the project consists of four pavilions with several functions, bonded with a footbridge. The main advertige of this solution is, that the individual pavilions are able to functionate separately. The entry is admitted with a ramp with a slope of 12 % and with stairs.

Pavilion A serves for education, the main rooms are the workshop and the projection room with a big terrace. These rooms are flexible and we can use them for several intentions. Professors and guests have a separated rest room and kitchenette available.

Pavilion B offers for visitors some covered sport flats, a skate park for beginners and a climbing wall. There is also a small bar, which serves also as a tribune.

In pavilion C the visitors have a chance to relax and lay off. There is a sauna, a massage room and a wading pool.

Pavilion D serves for culture, there is a big showroom and a coffee bar with a terrace.

Under the whole building is a free space, which allows a connection to the river.

Planning design calculates with the conjunction of the building whit Sandberg.

The intention of our design was to compose the four existing pillars into the new building and to adopt the natural environment with the least damage done to it.

