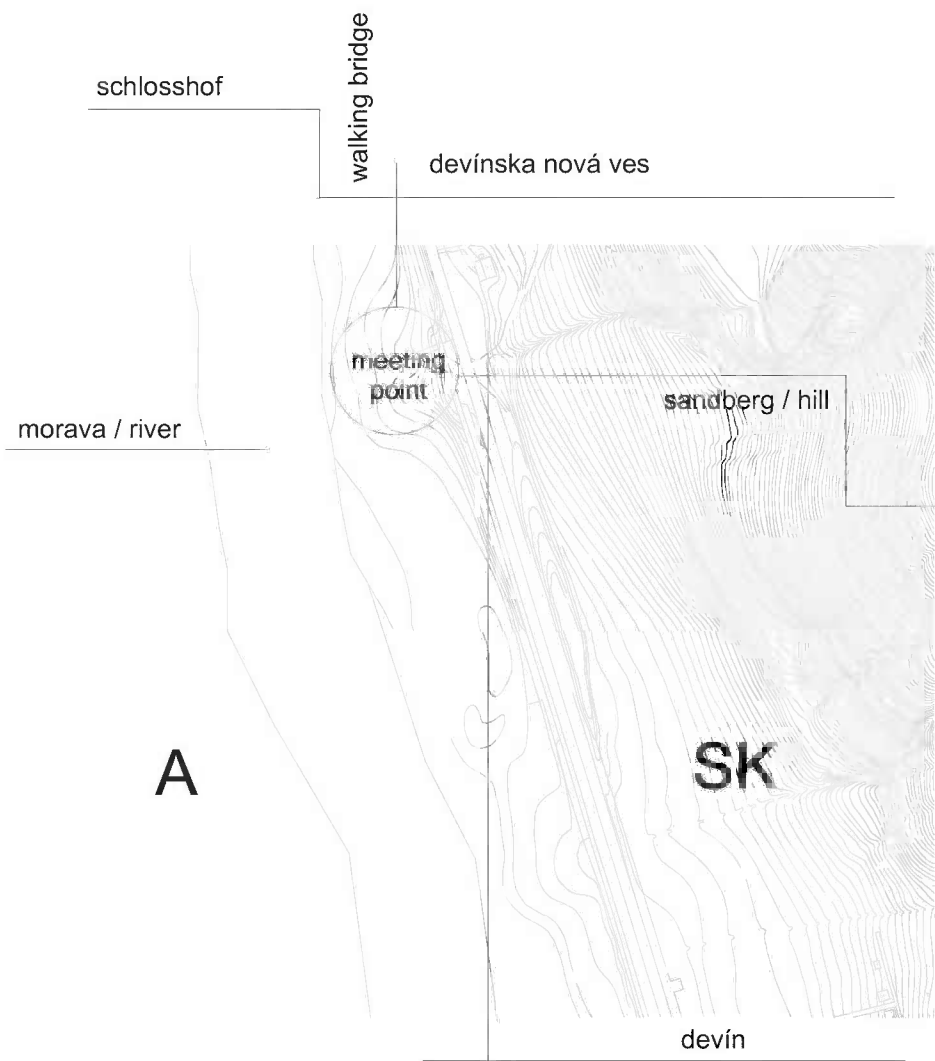


# meeting point

xella student competition  
meetingpoint sandberg



site 1:1000



memory  
snack bar  
gallery  
theatre  
"meetingpoint"

Space and human thinking define ways that people walk through, these ways often eliminate barriers, lead to the knowledge and open new horizons.

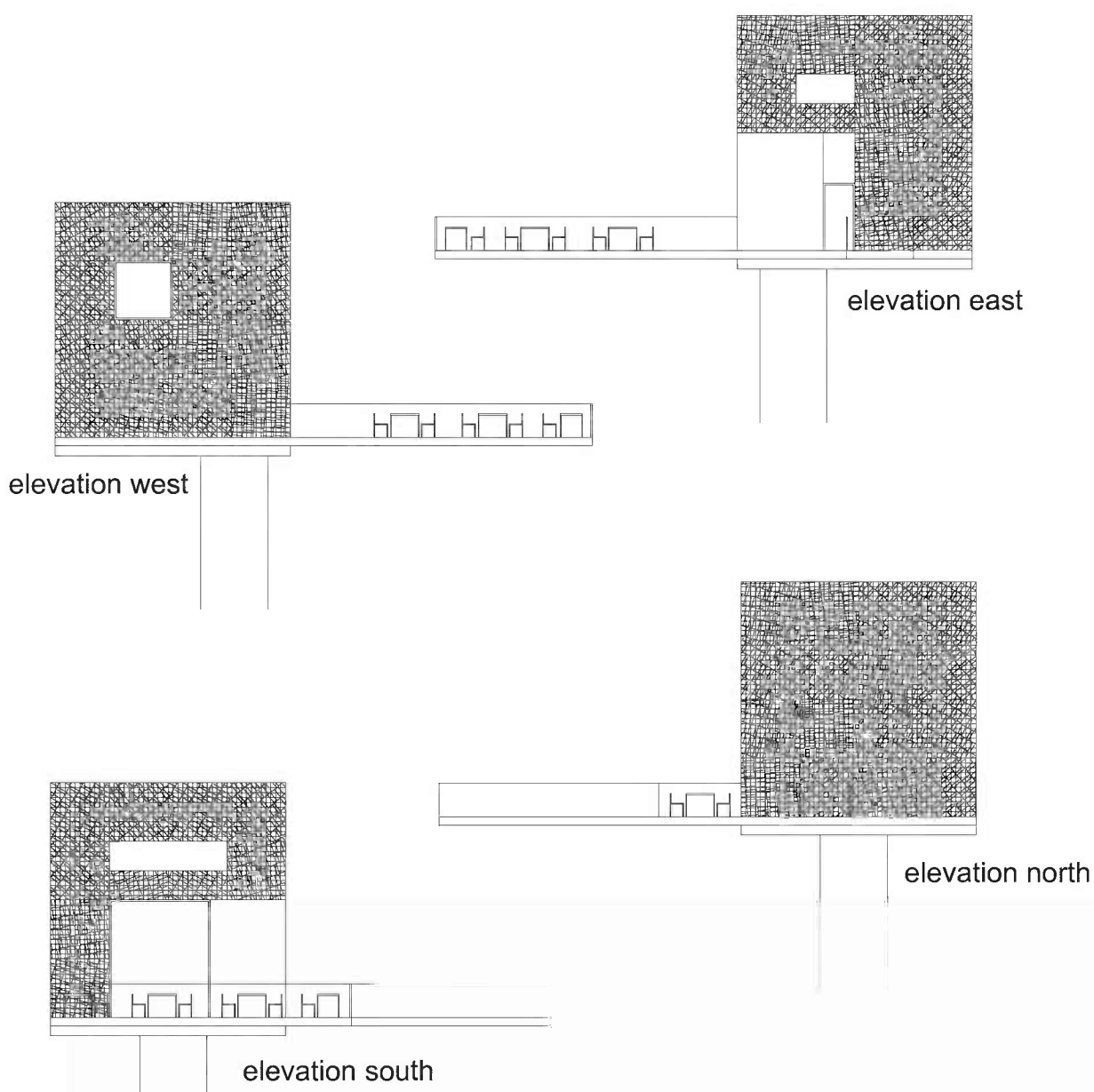
We perceived the intended area in very sensible way, so we decided to make it more important than architecture itself but at the same time designed architecture remains functional and strong in its own expression. It is designed mainly upon the existing natural surrounding and human needs. We also took into consideration that the state of surrounding environment is not random, it is the consequence of an important part of our history when this area was part of the border area.

Foot bridges- paths are designed to be almost invisible but simultaneously they are the main part of our project. We created paths that lead to the buildings with new functions in an original environment. This solution should bring life to the area which was forbidden for a long time. We decided to remain Sandberg just as a quiet spectator of new life underneath.

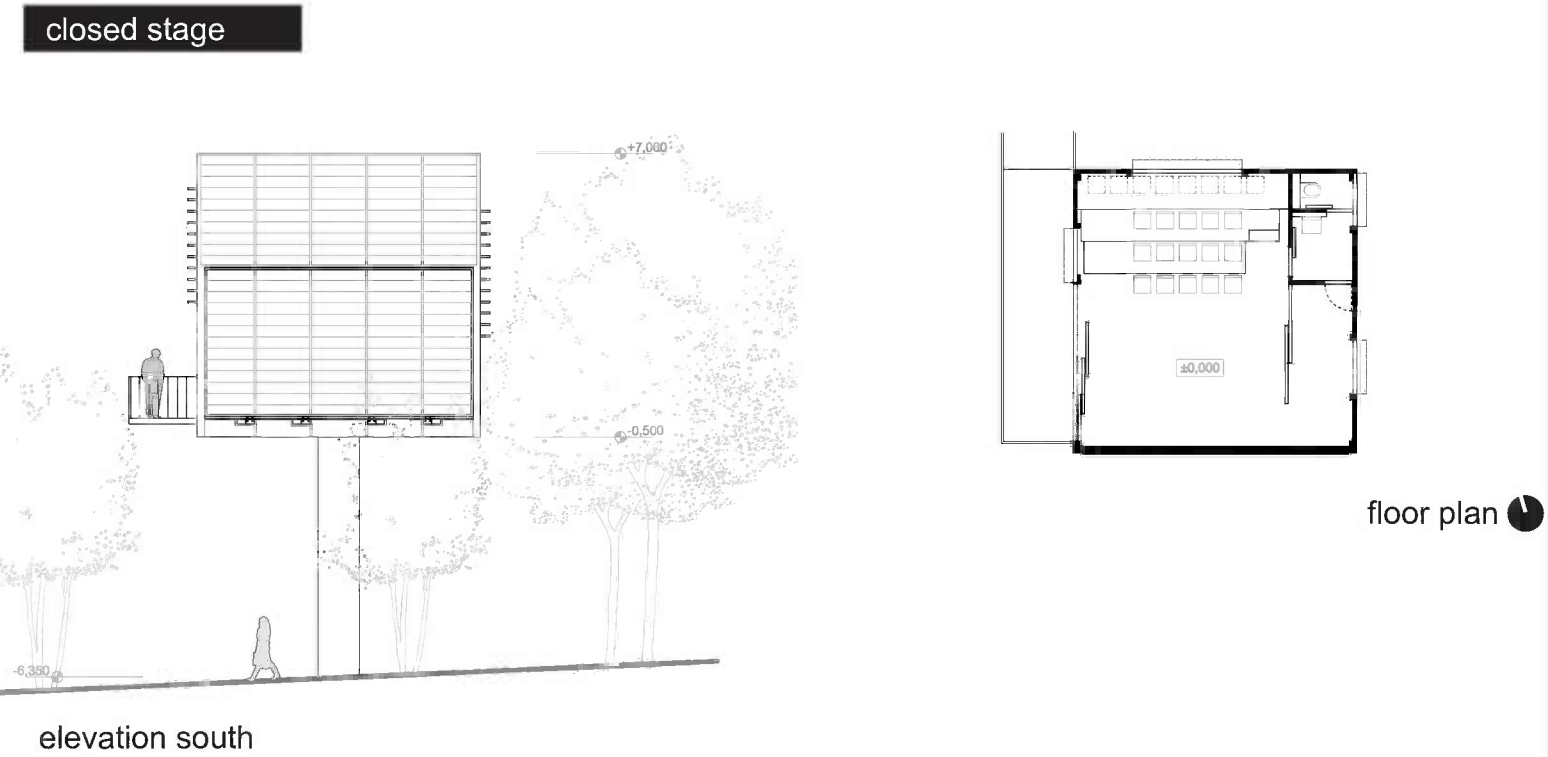
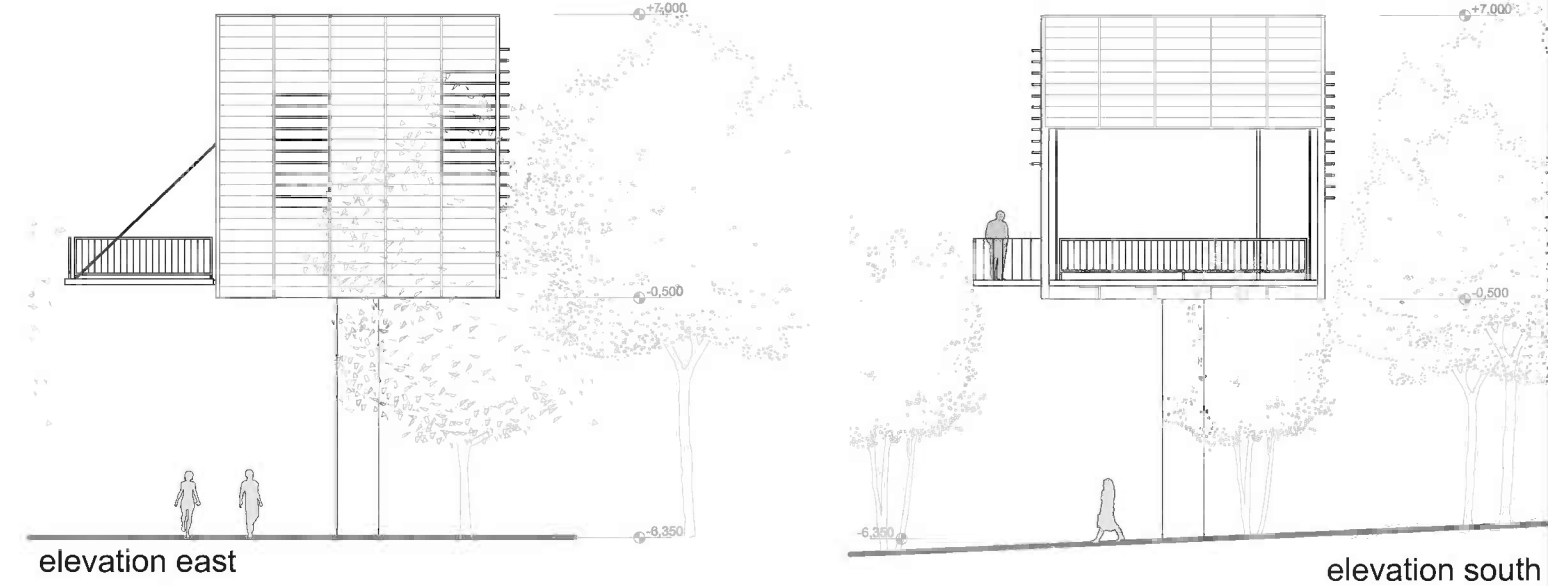
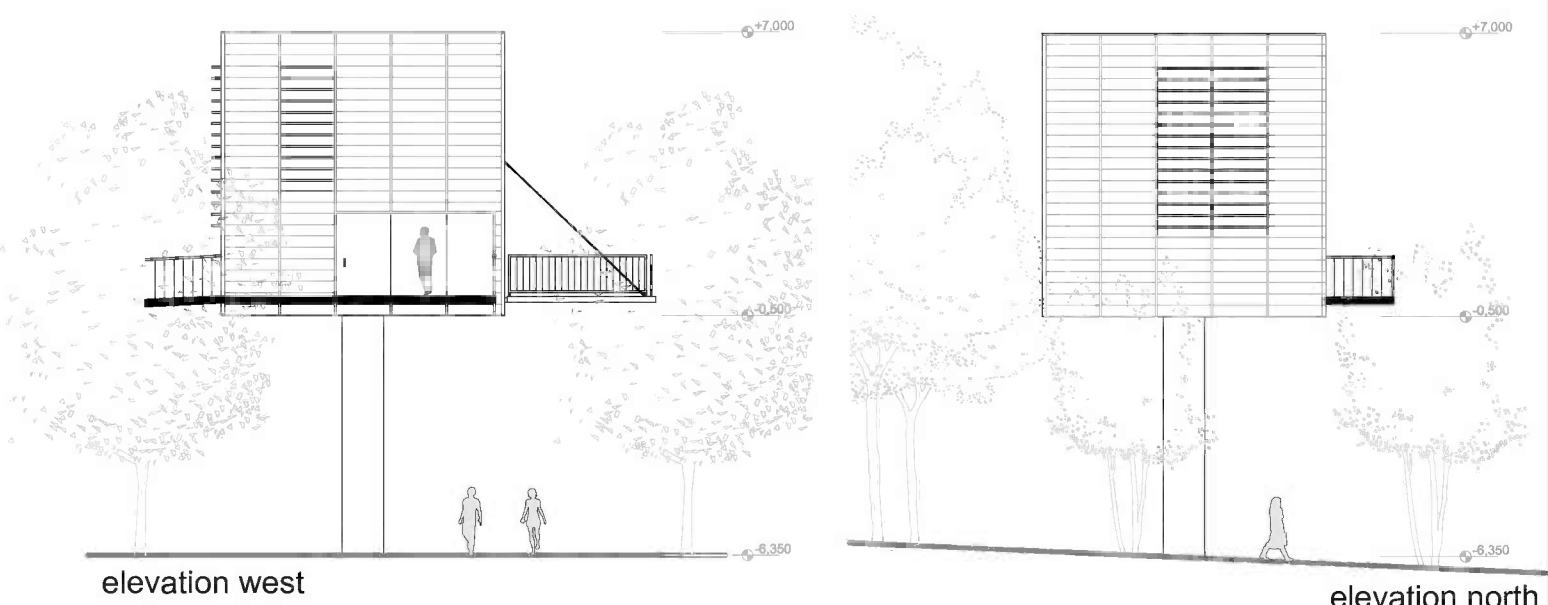
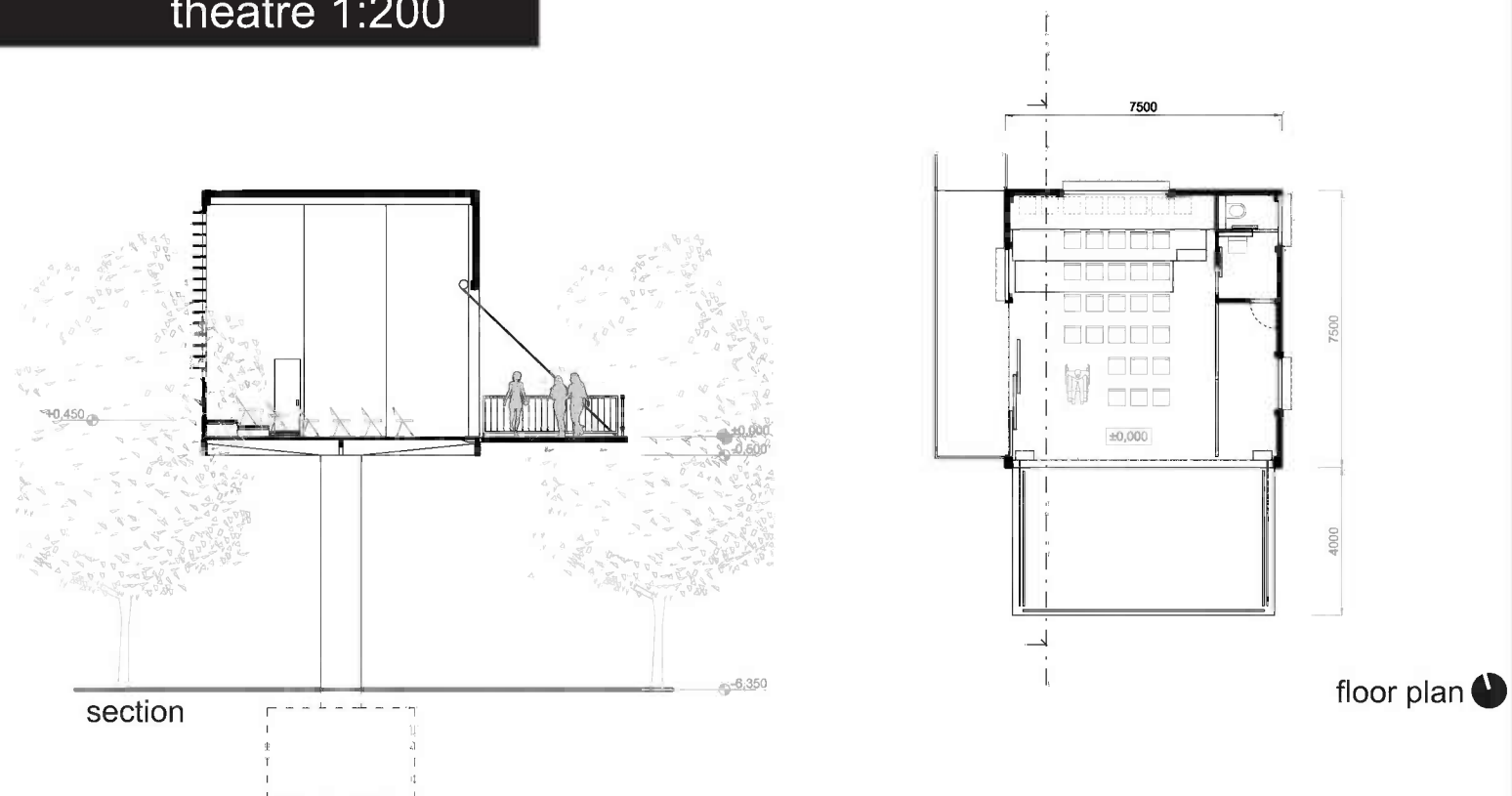
The main path is perpendicular to the axis of river Morava. It starts in the place of meeting- public platform which doesn't force us to enter the paths but offers the view that stimulates our inquisitiveness. People can choose between the way to the culture, art, knowledge or relax. These four elements were essential for our design and were taken into consideration.

Architecture itself has minimalistic form, does not disturb and provides minimal invasion to the environment. Even though we used natural materials, buildings are markeable and they harmonize with the natural surrounding and thanks the one pillar thez are almost floating above the ground.

snack bar 1:200



theatre 1:200



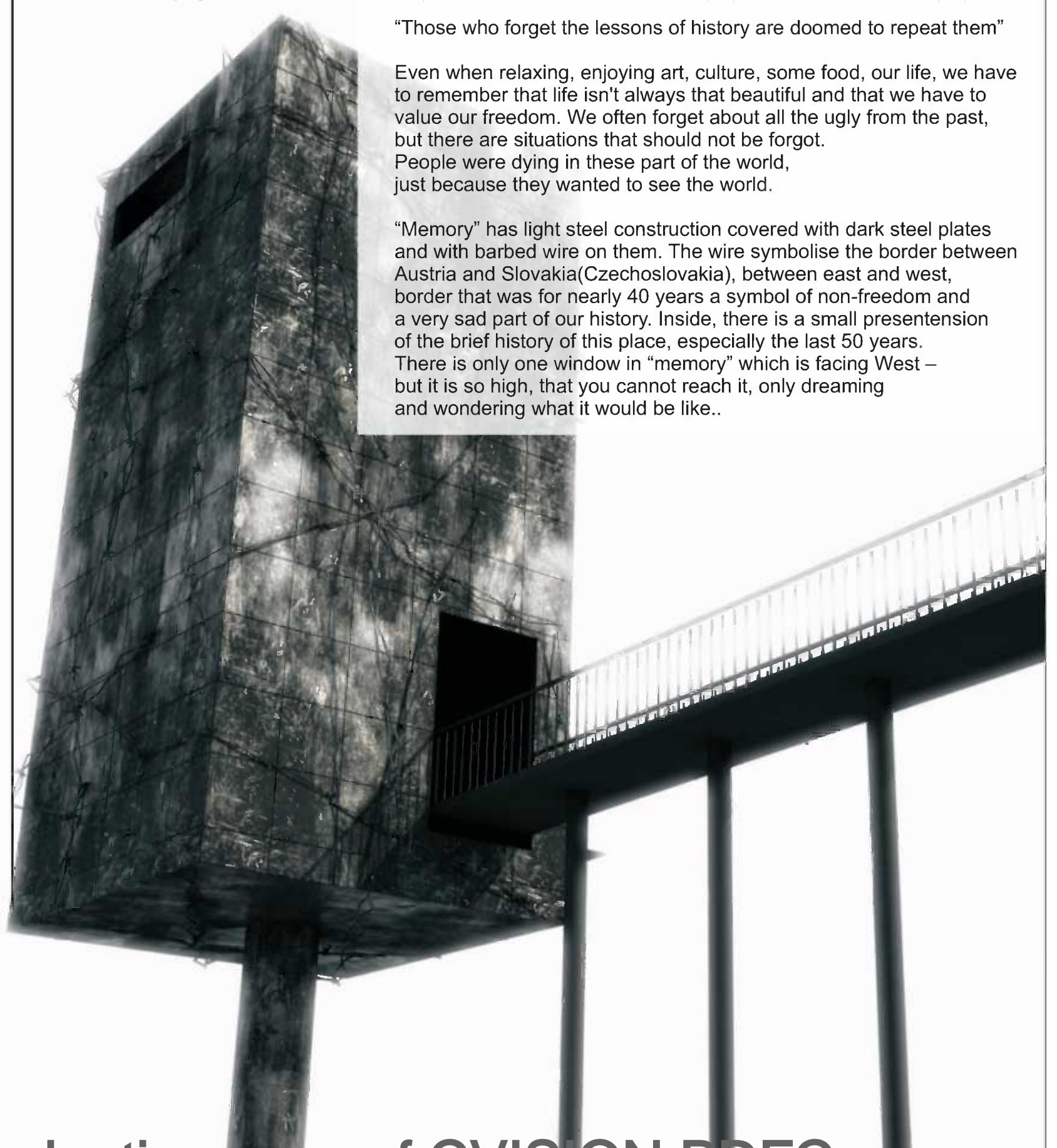
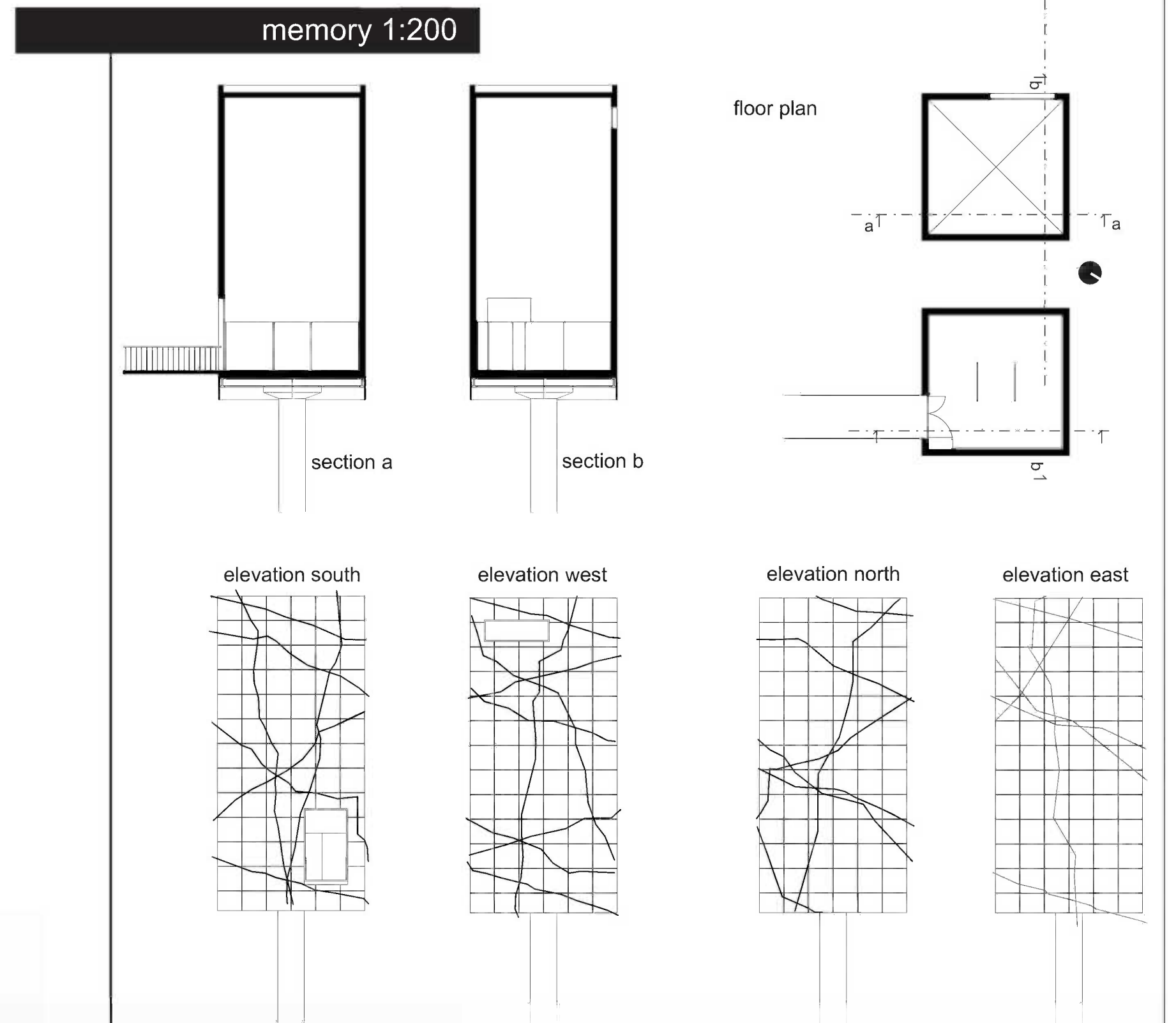
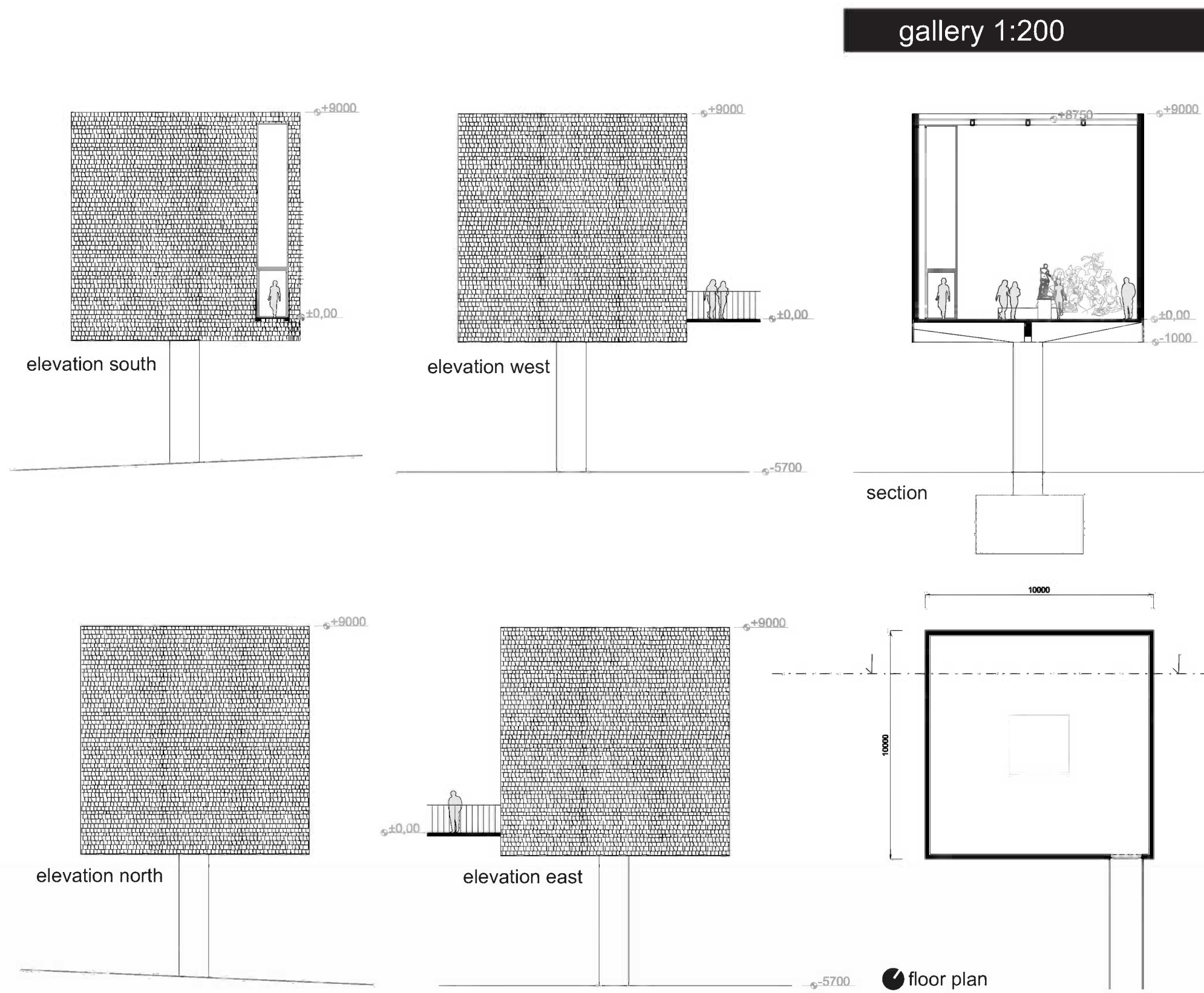
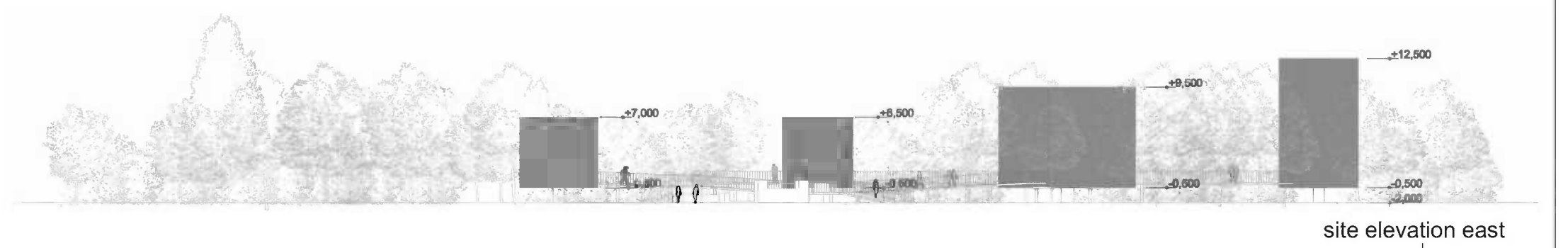
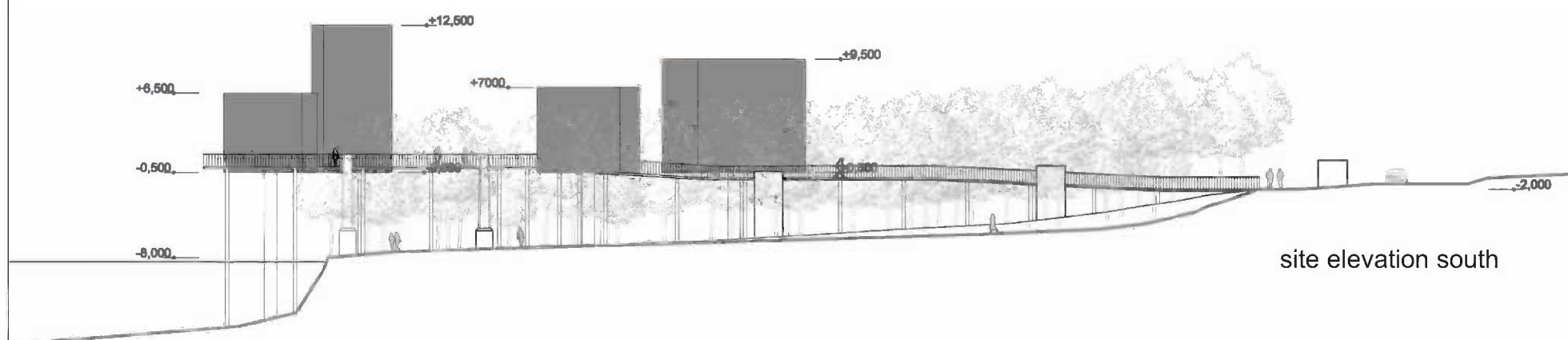
Meetingpoint - Snack bar  
Snack bar and the "meetingpoint" are like twins. Where meetingpoint near the road serves as a place to refresh your energy, or just wait for a friend coming the other way, snack bar is a bit advanced refreshment.  
In MP, you can just catch your breath, or you can leave/lock your bike here and start enjoying the trees and river through the little bridges lying across the original nature. You can refresh yourself a little bit more by stopping in the snackbar and while watching the beautiful river Morava gain some energy for the rest of your journey.  
When you have some more time time you can see some exhibition in the gallery or watch some movie/play in the theatre.  
Meetingpoint is steel platform, covered with wood.  
Snack bar is build from YTONG and covered with Gabbbion baskets filled with stones.

Theatre building is designed as multifunctional cube with primary usage as an alternative stage for theatre plays. Thanks to it's variability cube offers connection with outer space through the opening wall which at the same time serves as a stage for players. Inner space is divided with shifting wall, smaller space can be used as theatre backstage or small storage of furniture. Practical solution is usage of shifting platforms which serve as auditorium steps. Cube can also offer intimacy and shelter in it's closed variant when there can be held different social happenings. Cube has light steel construction covered with wooden plate facade.



# meeting point

xella student competition  
meetingpoint  
sandberg



"Those who forget the lessons of history are doomed to repeat them"

Even when relaxing, enjoying art, culture, some food, our life, we have to remember that life isn't always that beautiful and that we have to value our freedom. We often forget about all the ugly from the past, but there are situations that should not be forgot. People were dying in these part of the world, just because they wanted to see the world.

"Memory" has light steel construction covered with dark steel plates and with barbed wire on them. The wire symbolise the border between Austria and Slovakia(Czechoslovakia), between east and west, border that was for nearly 40 years a symbol of non-freedom and a very sad part of our history. Inside, there is a small presentation of the brief history of this place, especially the last 50 years. There is only one window in "memory" which is facing West – but it is so high, that you cannot reach it, only dreaming and wondering what it would be like..

Gallery building is designed like one open space in cube form, it provides variability and simple orientation of exhibitions. Sunlight come over the glass roof to the interior. Primary usage as gallery, can be changed for workshop space or chillout zone. Cube has light steel construction fill covered with wooden plate facade. Interior is covered by Fermacell desks painted on white.