



MOTTO: "Frontier - encounter of natural and social effects and events... it divides and unifies at the same time. Meeting points - coalescence of free space, space without frontiers, symbolic space for everyone"

The site is defined primarily by the Morava river with periodic floods. That determines the height of the proposed building above the terrain. Pylons of former telpher line create specific genius loci. Combination of these two facts generates the basic idea - building on pylons.

The place is currently not idle. It is used by local fishermen, Devinská Nová Ves is in a walking-distance, cycleway brings tourists from Austria and Bratislava, the site lies under Sandberg. It is necessary to make use of the strong characteristic of the place, develop a nice place for free time activities of local people and attract new visitors.

Building program is very rational. Coffee lounge, as a universal meeting place, is the only strictly defined function. For other activities there is enough free space left. The bridge/walkway can be used for open-air exhibitions. The viewing platform above the coffee is opened 24/7, everyone can come to read a book, make a party, sunday afternoon barbecue...

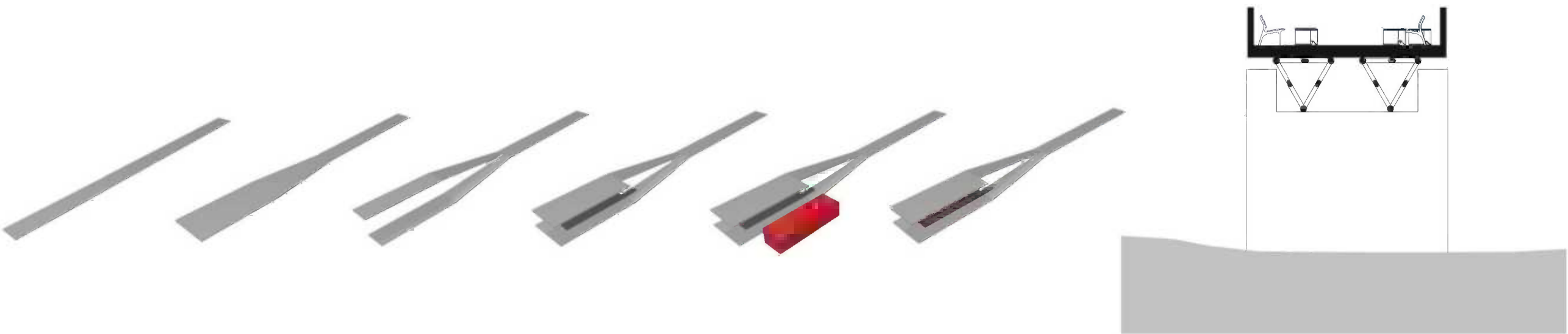
Corten and wood - used materials accent the industrial background of the place. With time they change. They get old and look even better.



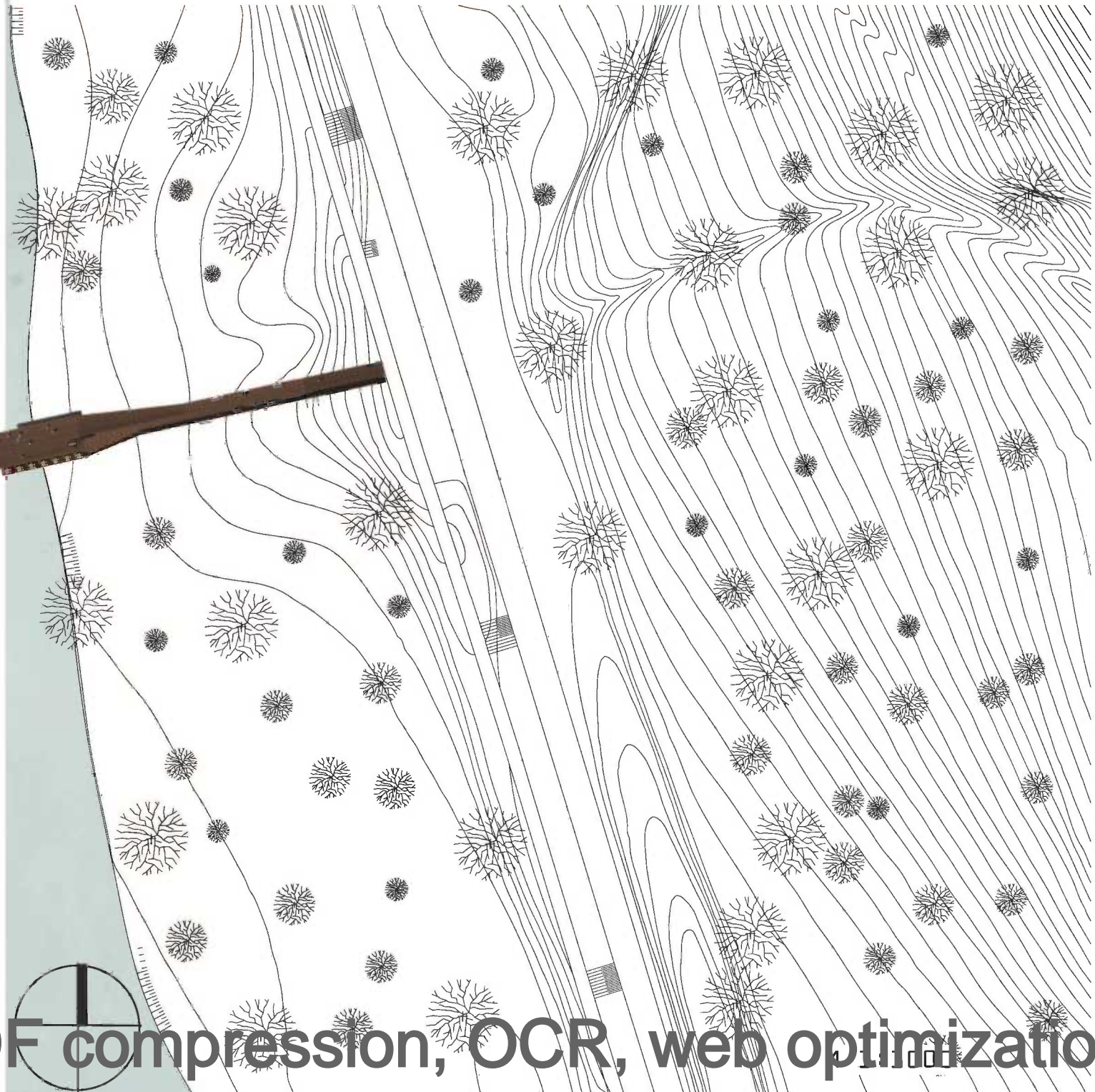
MATERIALS



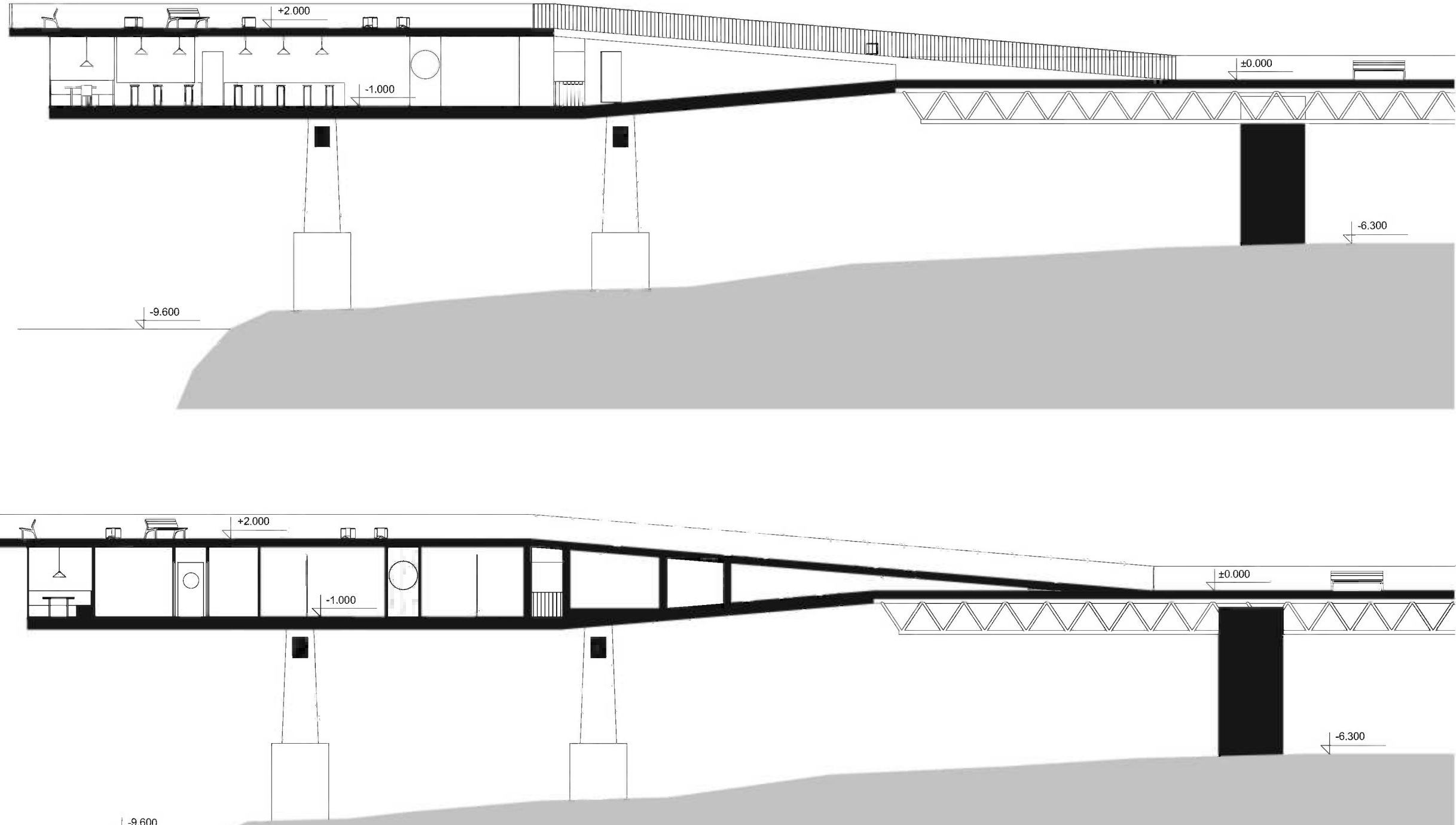
CONCEPT



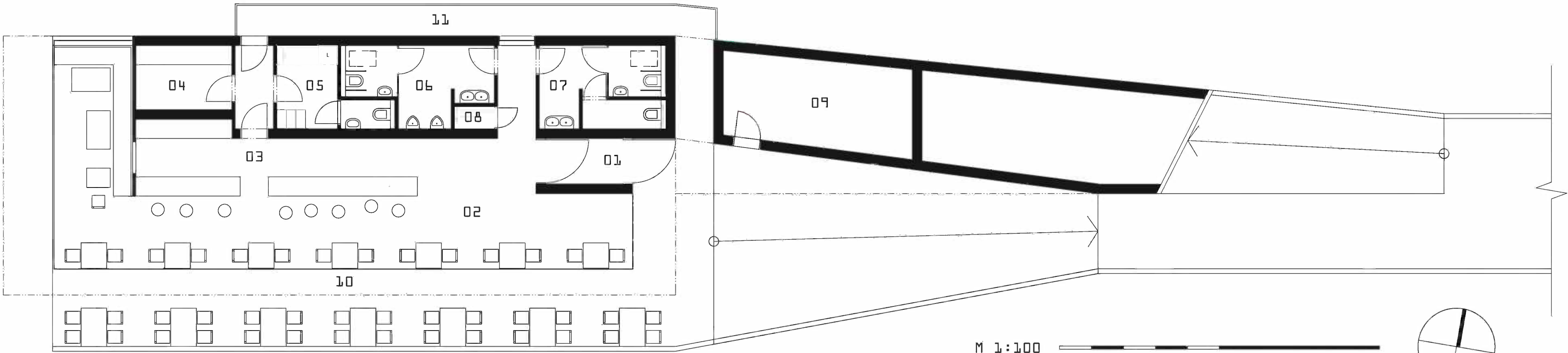
SITUATION



SECTIONS

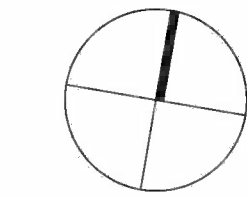


PLAN



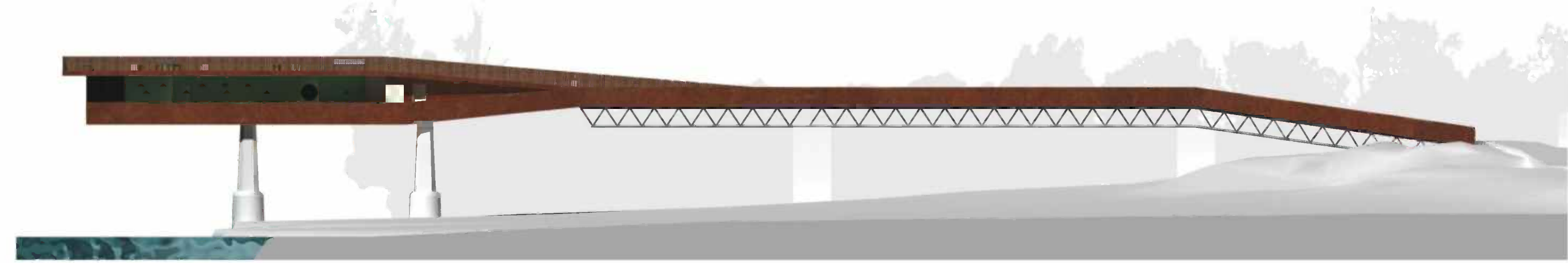
M 1:100

01	Entrance	4.3 m2
02	Restaurant with 30 seats	60 m2
03	Bar	17.6 m2
04	Kitchen	6 m2
05	Staff room	6.6 m2
06	WC men	9.6 m2

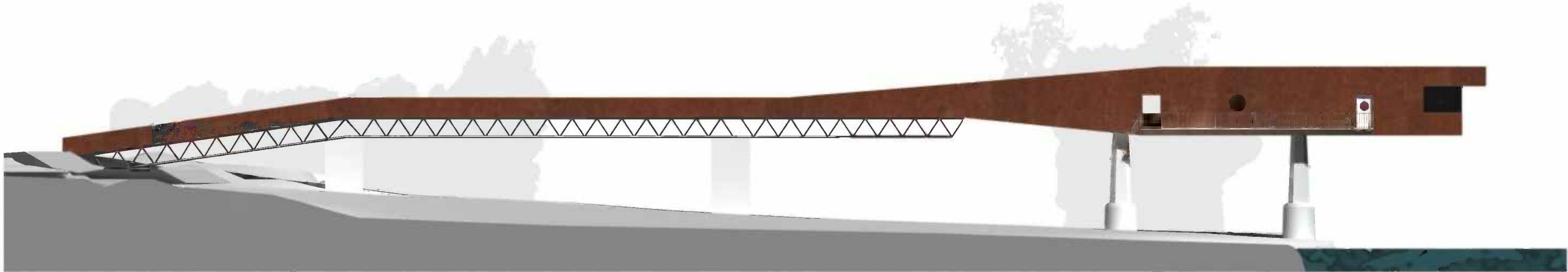


07	WC women	10.3 m2
08	Cleaner's room	1 m2
09	Machine room	16 m2
10	Summer terrace with 28 seats	50 m2
11	Staff entrance	19 m2

SOUTH



NORTH



WEST



Glass facade is in summer, when larger number of guests come, fully opened, that makes the restaurant twice as big. The space opens to the surrounding landscape, people sit above the river in the tree-tops. In winter, when less guests visit the coffee, the facade stays closed. That makes the plan variable.

SUMMER



WINTER

