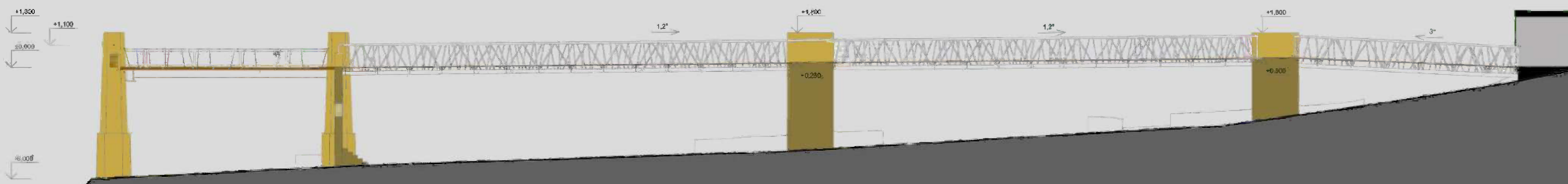


# MP4S MEETING POINT FOR SANDBERG

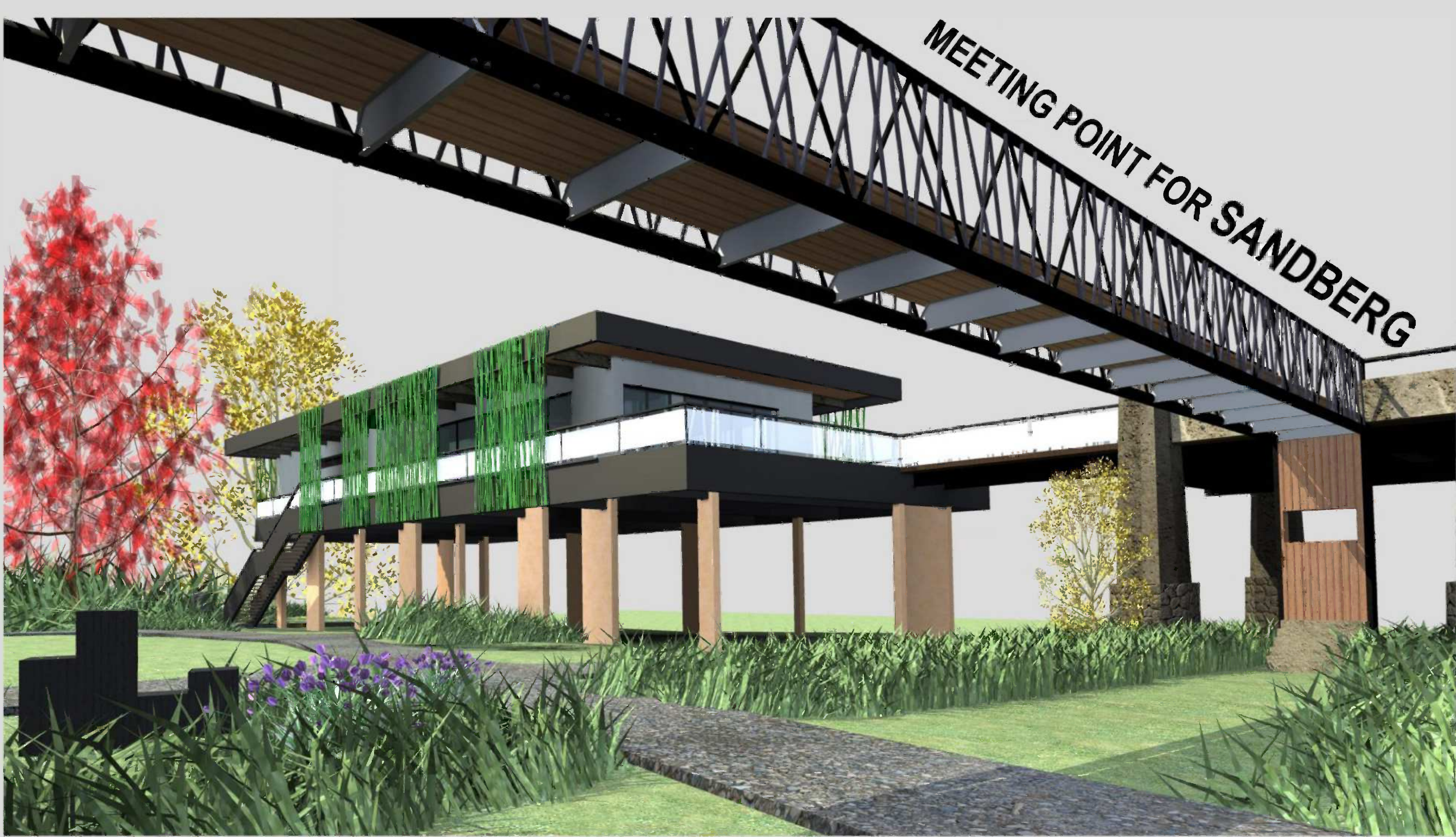


SANDBERG IS A PLACE WITH RICH HISTORY AND HAS A LOT TO OFFER. THIS PROJECT IS TRYING TO CREATE A PLACE FOR PEOPLE WHICH WILL RESPECT THE LEGACY OF A STRONG HISTORICAL AND ENVIRONMENTAL BACKGROUND. DEVELOPED AREA IN THE SURROUND OF A FORMER TELPHER LINE LAY BETWEEN CYCLE TRACK AND MORAVA RIVER IN A DIRECT LINK TO THE SANDBERG HILL. LAYOUT SHOULD PROVIDE A PLACE FOR GATHERING, ACTIVE RECREATION AND RELAXATION. PROJECT IS BASED ON FOUR MAIN PARTS: GARDEN, FOOTBRIDGE, SIGHTSEEING PLATFORM AND RESTAURANT. FOOTBRIDGE IS A WELL DESIGNED STEEL LATTICE GIRDER WITH ADDITIONAL LATTICE USING PARTS OF THE TELPHER LINE AS ITS OWN FOUNDATION.

THIS PATH LEADS TO THE PLATFORM LYING ON THE OLD PILLARS CLOSE TO THE RIVER. SIMPLE DESIGN OF THE GARDEN USES AN EFFECT OF CONTRAST BETWEEN ORIGINAL MEADOW GRASS AND MOANED LAWN. OTHER GARDEN COMPONENTS ARE SMALL ARRANGEMENTS OF BASIC GEOMETRY SHAPES LIKE CUBES AND PRISMS. WE CAN COMPREHEND IT NOT ONLY LIKE A SIMPLE STATUTE BUT ALSO LIKE A BENCH OR OBJECT TO EXPLORE.

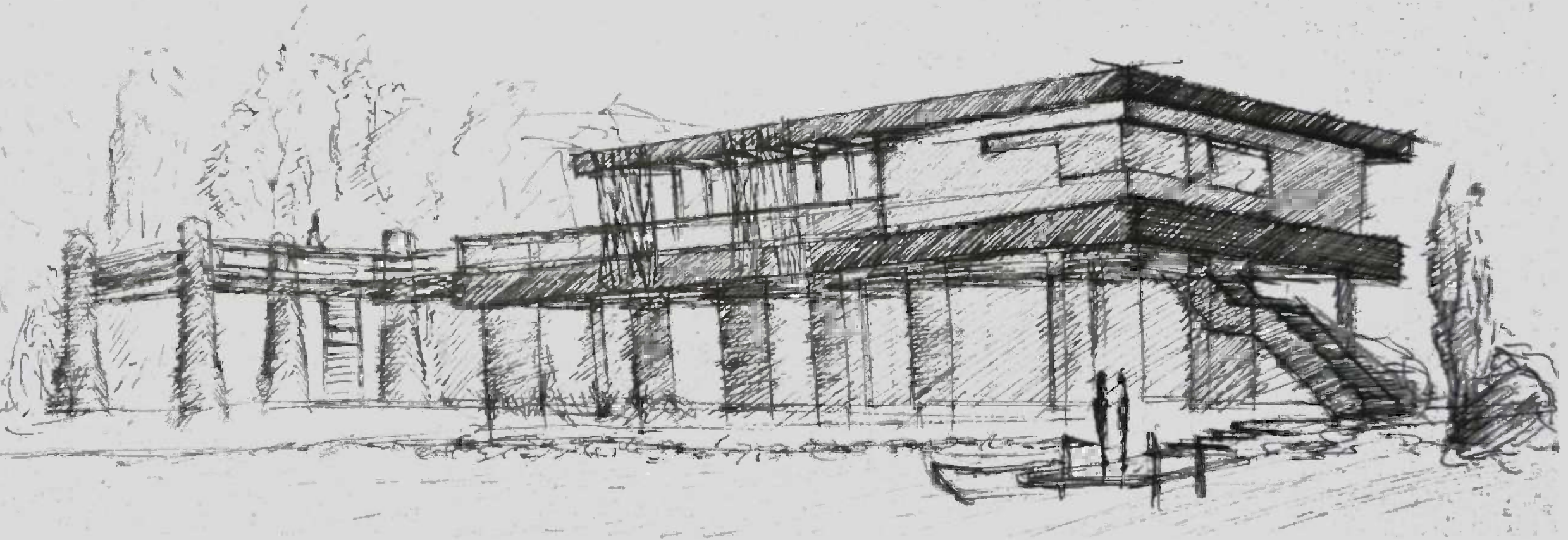




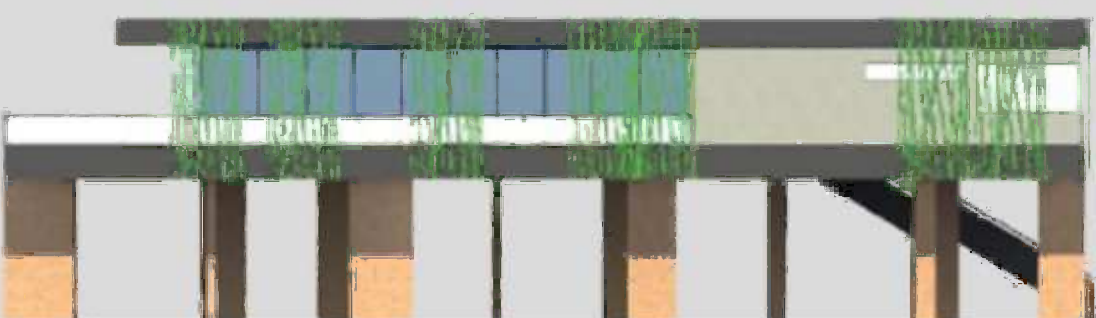


THE HOUSE CONSIST OF TWO HEAD PARTS, ONE CONTAINS THE RESTAURANT KITCHEN, SUPPLEMENTARY AREAS AND RESTROOMS, THE OTHER, MULTIFUNCTIONAL HALL WITH BAR AND DINING AREA, IS DESIGNED AS A VARIABLE SPACE THAT CAN BE USED FOR TEMPORARY EXHIBITIONS, CONCERTS, BUSINESS MEETING OR AS A CINEMA. THE HALL HAS SLIDING WINDOWS THAT CAN BE OPENED TO ALL THREE DIRECTIONS WHICH EASILY TRANSFORM INTERIOR IN TO THE EXTERIOR.

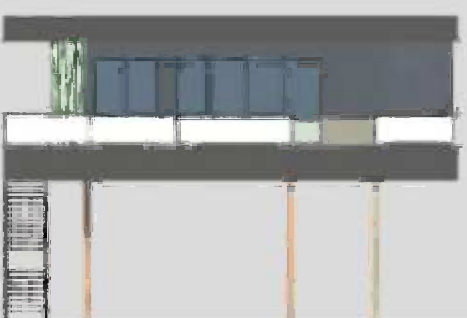
THE HOUSE IS ORIENTATED WITH ITS LONGITUDINAL AXIS IN N-S DIRECTION WHICH MEANS THAT SUNLIGHT VARIES A LOT IN THE INTERIOR. THERE ARE THREE POSSIBLE SITUATIONS DURING A WHOLE DAY — DEPENDING ON WHICH CONSTRUCTION PART CASTS A SHADOW. ADJUSTABLE PANELS WITH A DESIGN OF GRASS PREVENTING FROM DIRECT SUN GOING INSIDE AS WELL AS THE VARIABLE INTERIOR AND ITS ILLUMINATION HAVE A COMMON GOAL — TO REFER TO A CONTINUOUS CHANGE OF NATURE.



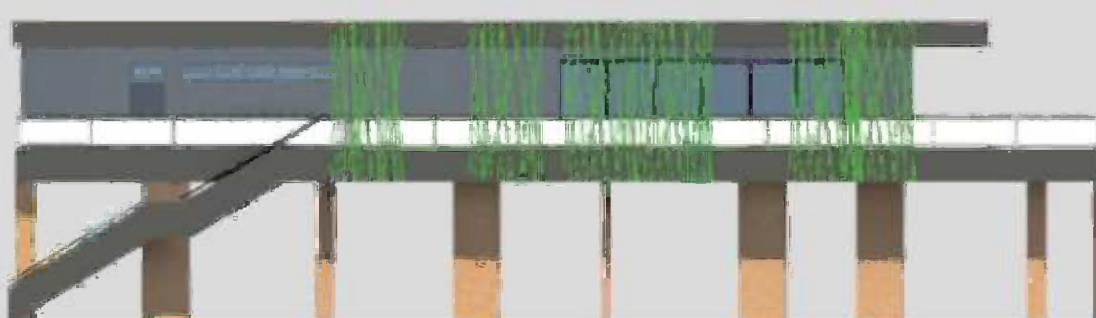
- 1.1 VESTIBULE
- 1.2 MULTIFUNCTIONAL HALL
- 1.3 BAR
- 1.4 KITCHEN
- 1.5 CORRIDOR
- 1.6 STORE GARBAGE
- 1.7 FOOD STORE
- 1.8 CLEANING ROOM
- 1.9 CLOAKROOM
- 1.10 WASHROOM
- 1.11 Wc
- 1.12 OFFICE
- 1.13 Wc - MEN
- 1.14 Wc - WOMEN
- 1.15 FURNITURE STORE
- 1.16 CORRIDOR
- 1.17 CLEANING ROOM



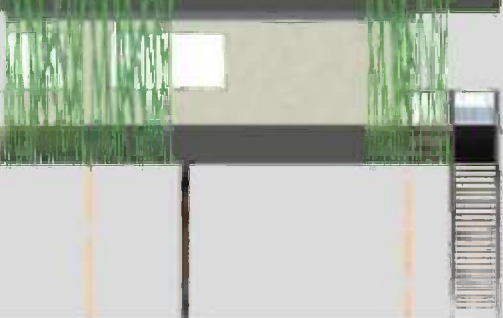
WEST VIEW



NORTH VIEW



EAST VIEW



SOUTH VIEW