

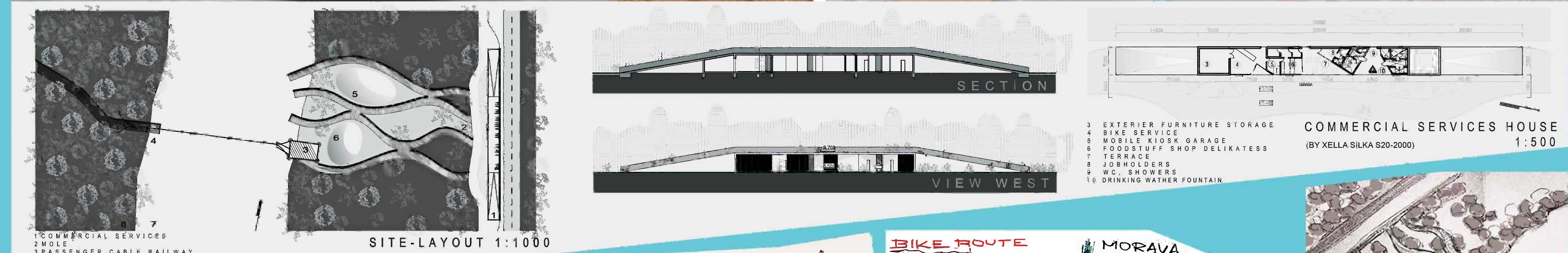
(WOODEN) PASSENGER CABLE RAILWAY 1:200

Sun bath on the riverside

"COME WITH ME AND DON'T FALTER, DO NOT ALWAYS SUCH A SPITE, VISIT FINALLY MY SUN BATH. IF YOU HAVE A TIME, SO TRY THAT PARADISE, AND I WILL LOAD YOU AS FOR RIVERSIDE, AND THERE YOU WILL KNOW, SAFELY, MY SUN BATH. ON THE INTENSE SUNSHINE, PAY ATTENTION FOR WAVES, THERE I WILL SUPPLY, NOTELESS, EVERY THING YOU WISH. AND YOU WILL SEE, THAT I KNOW MEDICINE FOR YOURS LOW SPIRITS, SO LET'S CURE, WELL I OWN SUN BATH ON THE RIVERSIDE..."

...I FOUND INSPIRATION IN THIS TEXT FROM MILAN LASICA (PERFORMER - PETER LIPA)

IT IS SWEET (ECOLOGIC) STATION ON THE CYCLOROUTE, WHERE WILL EVERYBODY (YOUNG OR OLD) FINDS SOMETHING TO DO FOR A FEW HOURS AND THAN WILL (RELAXED) CONTINUE IN HIS TREK...



COMMERCIAL SERVICES HOUSE (BY XELLA SILKA S20-2000) 1:500

