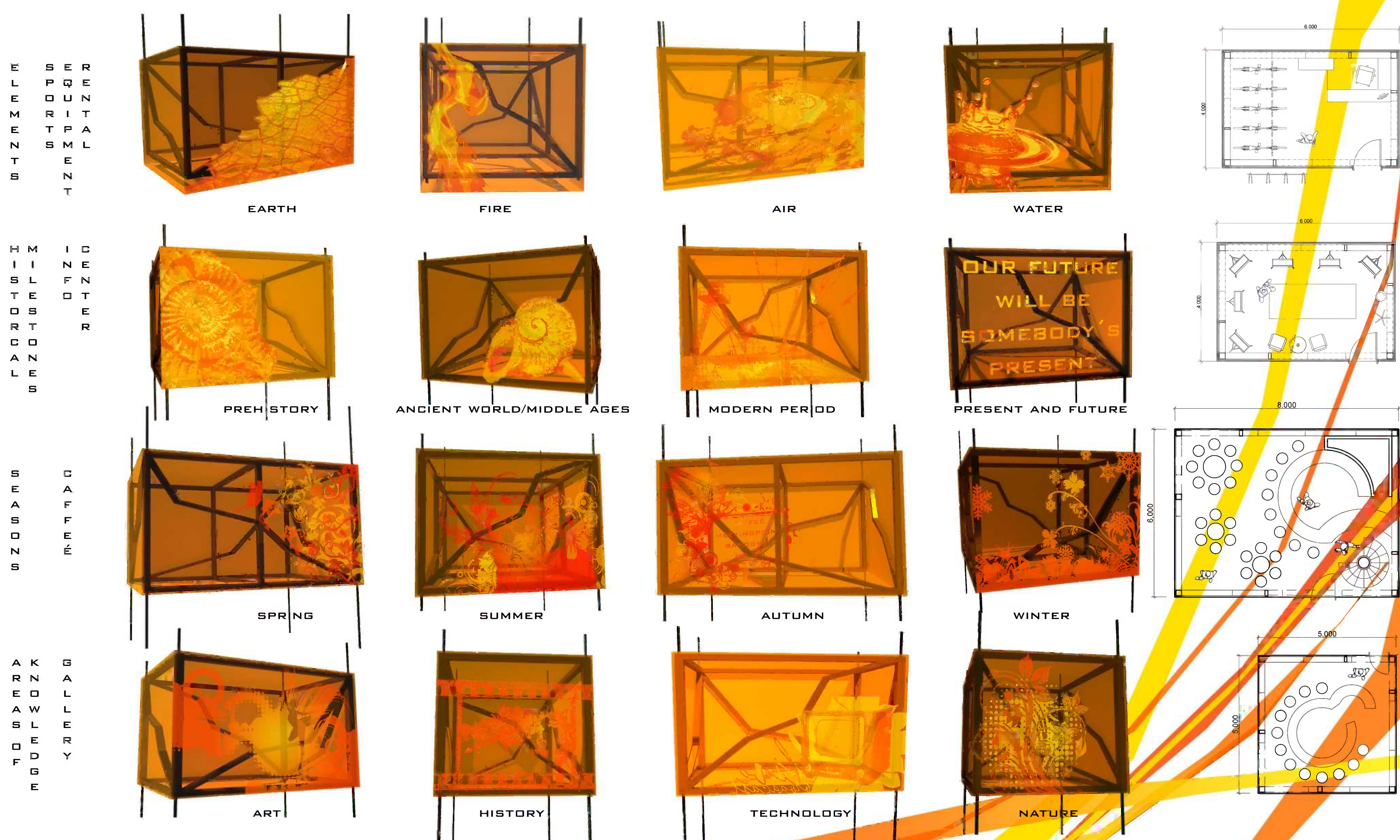


## UPSIDE DOWN OR HOW TO LOOK FROM HIGHER PERSPECTIVE

PILLARS OF THE FORMER FUNICULAR HAS SERVED AS EVIDENCE FOR A TIME FORGOTTEN LONG AGO IN THE PAST. BOTH, THE SURROUNDING LANDSCAPE AND THE SOCIAL STRUCTURE HAS CHANGED SINCE THEIR FAME. THEIR NEW USE IS NOT DIRECTLY OFFER. DESIGN OF THE OBJECT RESPONDS TO THE CURRENT STATE OF THE ENVIRONMENT AND ALSO TO THE NEW POSSIBILITIES WHEN THINKING OF USING THIS SPACE. UPSIDE\_DOWN FOOTBRIDGE USES PILLARS PRIMARILY AS STRUCTURAL ELEMENTS AND SIMULTANEOUSLY, THEY ARE ALSO INCLUDED INTO THE MAIN COMPOSITION. AT THE SAME TIME UPSIDE\_DOWN FOOTBRIDGE IS AN SUPPORT ELEMENT FOR 4 (IN WIDER IDEA WORKING-OUT 5) SUSPENDED CABINS. EACH OF THEM HAS ITS FUNCTION - SPORTS EQUIPMENT RENTAL, INFO CENTER, CAFFÉE AND GALLERY. AS AN ALTERNATIVE WE OFFER THE FIFTH CABIN AS A FUNICULAR FOR THE PEOPLE - A REFERENCE TO THE ORIGINAL PURPOSE OF THE PILLARS AND ALSO IMPORTED FEATURE LINKING THE TWO COUNTRIES THAT WERE SEPARATED BY THE INFINITE BARRIER FEW YEARS AGO DESPITE THEIR NEIGHBORHOOD.

NUMBER OF 4 CABINS AS WELL AS THE PRINTMAKING POINT TO WHAT HAS HAPPENED IN THE SURROUNDING ENVIRONMENT IN THE PAST. IT SHOWS WHAT PERIODS ARE CONNECTED WITH THE TERRITORY AND ALONGSIDE WITH HOW IT WAS MARKED BY PEOPLE AND NATURE. NOWADAYS WATER IS THE MOST DOMINANT ELEMENT. THE PRESENCE OF WATER HAS MAINLY IMPACTED THE DESIGN OF THE SKETCH. DURING POTENTIAL FLOODING THE DESIGN OF THE UPSIDE DOWN FOOTBRIDGE PROVIDES THE OPPORTUNITY TO WITHDRAW CABINS HANGING ON ROPES UNDER THE CONSTRUCTION OF THE FOOTBRIDGE UP. THANKS TO THIS SOLUTION ARE ALL THE SPACES PREVENTED AGAINST DAMAGES.

IMMEDIATE SURROUNDING OF THE FOOTBRIDGE REFLECTS A FLOOD ZONE AND IS CREATED BY OPEN-AIR SPORT AREAS, WHICH ARE SEPARATED WITH LANDSCAPES LAYOUTS RESEMBLING THE SHAPE OF THE PEDESTRIAN PROMENADE. NEXT TO THE FOOTBRIDGE IS **AMFITEATER** WHICH IS TAKING ADVANTAGE OF THE NATURAL POTENTIAL OF THE TERRAIN.



## FEATURE LINKING TWO COUNTRIES

AS AN ALTERNATIVE WE  
OFFER THE FIFTH CABIN  
AS A FUNICULAR FOR THE  
PEOPLE



A DILUVIAL ZONE

THE DESIGN OF THE UPSIDE-DOWN  
FOOTBRIDGE PROVIDES THE  
OPPORTUNITY TO WITHDRAW CABINS  
HANGING ON ROPES UNDER THE  
CONSTRUCTION OF THE FOOTBRIDGE  
UP. THANKS TO THIS SOLUTION ARE  
ALL THE SPACES PROTECTED  
AGAINST DAMAGES.



[illegible]

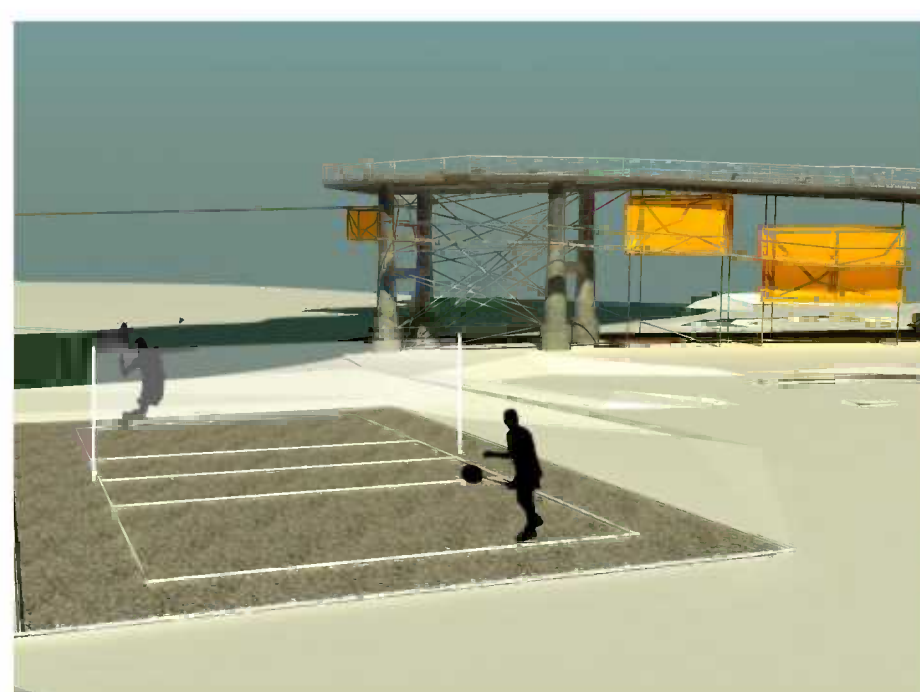
C	A	B	C
L	T	E	O
I	R	T	L
M	A	W	L
B	C	E	U
I	T	E	M
N	I	N	N
G	O	T	S
	N	H	
		E	



N A  
A M  
T F  
U I  
R T  
A E  
L A  
T E  
R



P P  
E L  
T A  
A Y  
N I  
Q N  
U G  
E A  
R E  
A



B  
A  
D  
M  
I  
N  
T  
O  
N

