

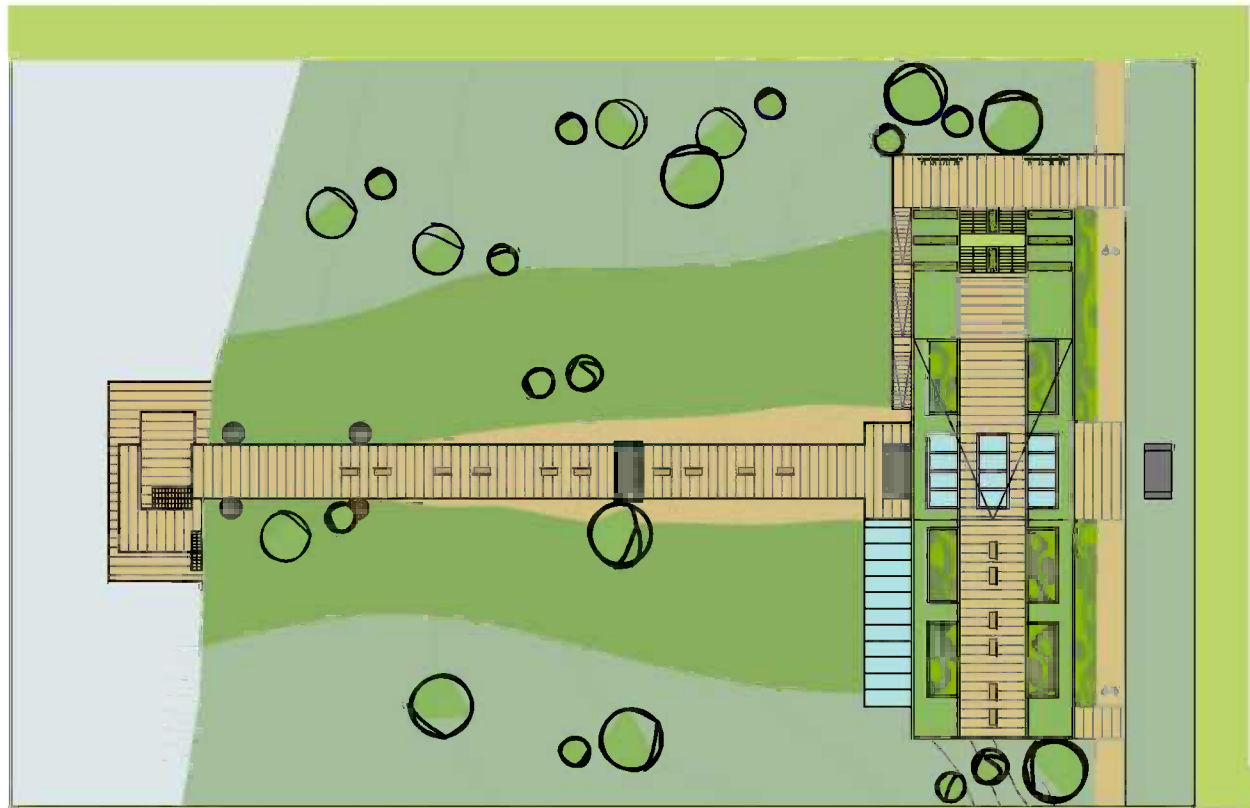
**HISTORY**  
THE AREA AROUND SANDBERG HAS BEEN AN IMPORTANT PART OF THE PAST IN EACH STAGE OF THE HISTORY.  
- SANDBERG AS THE BOTTOM OF THE SEA IN THE CENOZOIC AGE  
- THE IRON AGE - THE AREA SETTLED BY THE CELTIC TRIBES  
- THE ROMAN AGE - THE RIVER DANUBE CREATES THE BORDER BETWEEN THE DEVELOPED ANTIC CIVILIZATION AND THE UNDEVELOPED CIVILIZATION OF THE GERMANS  
- THE NATIONS MIGRATION - THE SLAVS ARE BECOMING THE RULERS IN THE MIDDLE OF EUROPE  
- 18TH CENTURY - THE SAND MINE WITH A CABLEWAY, WHICH USED TO CARRY THE SAND FROM SANDBERG TO THE SHIPS.  
- IN 1955 EU WAS DEVIDED BY THE SPIKY WIRE AND THE IRON CURTAIN STRETCHED ALONG THE RIVER MORAVIA.

**PRESENT DAYS**  
- THE RUINS OF THE CABLEWAY - THE CHALLENGE FOR STUDENTS

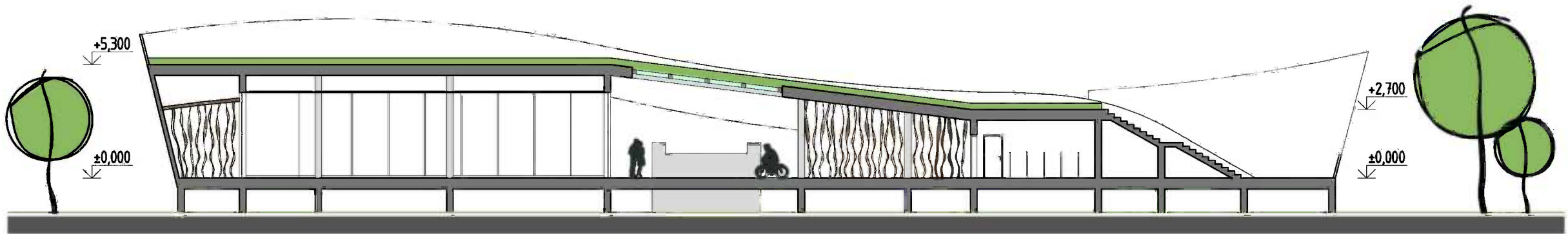
**FUTURE**  
A MEETINGPOINT FOR FRIENDS AS WELL AS STRANGERS, A PLACE FOR RELAXATION, A STOP DURING A LONG JOURNEY THE RIVERS MORAVIA AND DANUBE DO NOT CREATE A BARRIER ANY MORE, BUT CONNECT



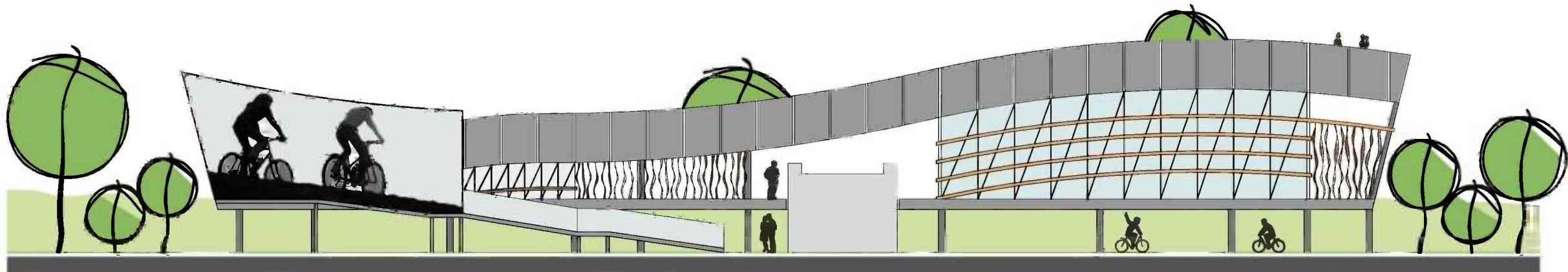
- GROUND PLAN  
M 1:250
- 0m 5m 10m 15m 20m
1. SALADS BAR
  2. KITCHEN
  3. TOILET CONSUMERS
  4. TECHNICAL AREA
  5. TOILET EMPLOYEES
  6. DELIVERY AREA
  7. CLEANING ROOM
  8. TOILET MEN
  9. TOILET DISABLED
  10. TOILET LADIES
  11. ENTRANCE HALL + BIKE PARKING AREA



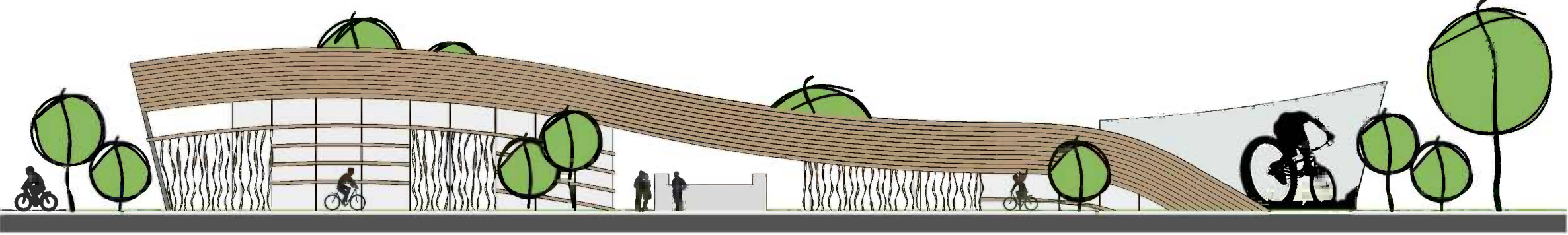
PLAN VIEW TRAFFICABLE GREEN ROOF + GANTRY FOR CYCLISTS AND PEDESTRIANS  
M 1:700



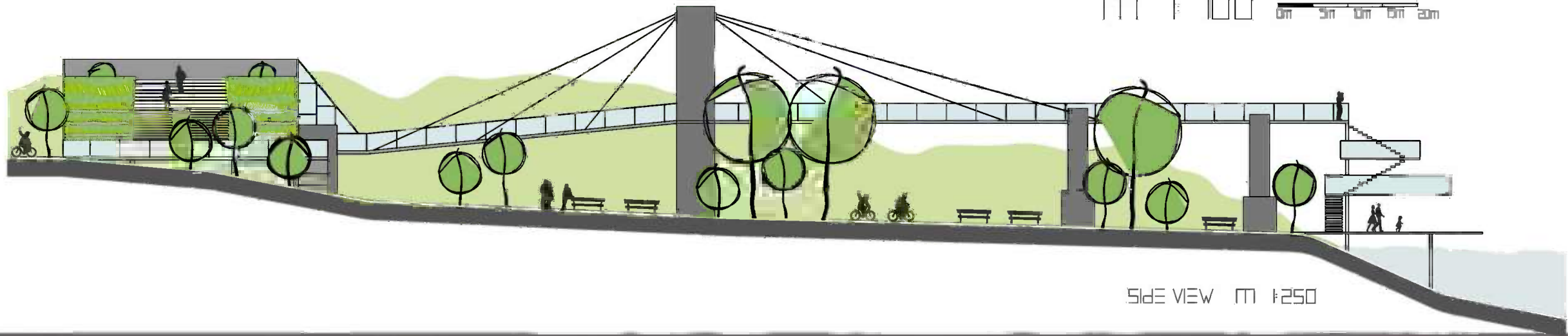
SIDE SECTION  
M 1:250



REAR VIEW  
M 1:250



FRONT VIEW  
M 1:250



SIDE VIEW  
M 1:250



SITE LAYOUT MAP AND ASPECTS  
M 1:700

