



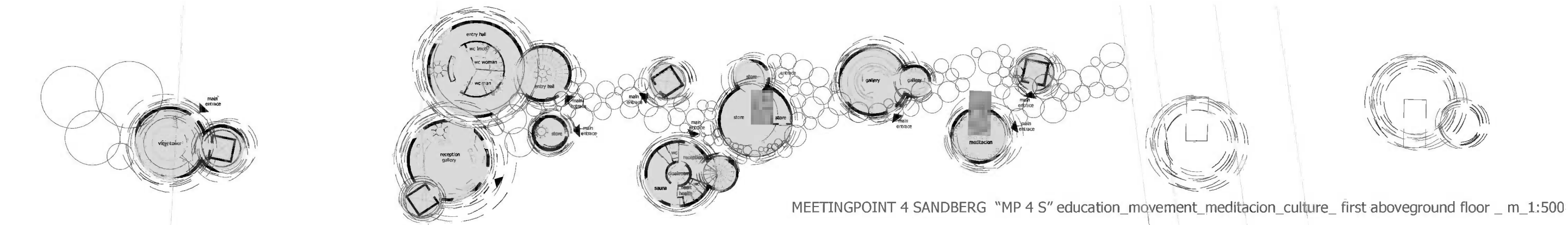
MEETINGPOINT 4 SANDBERG "MP 4 S" education\_movement\_meditation\_culture\_SITUATION\_m\_1:2000



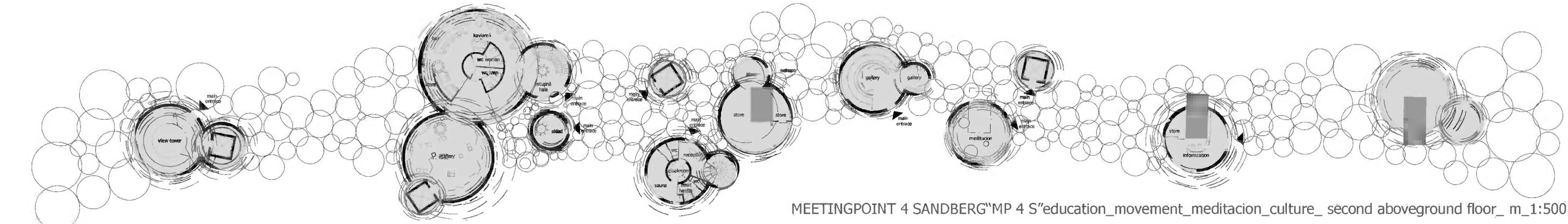
MEETINGPOINT 4 SANDBERG "MP 4 S" education\_movement\_meditation\_culture\_vizualization\_m\_1:2000



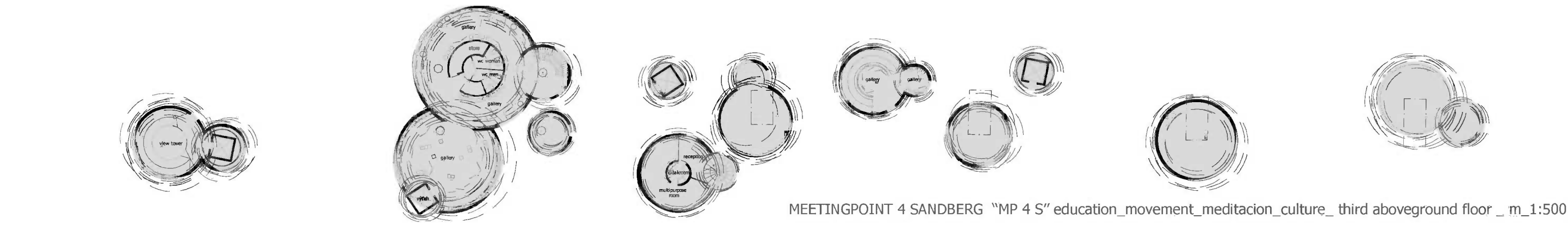
INSPIRATION



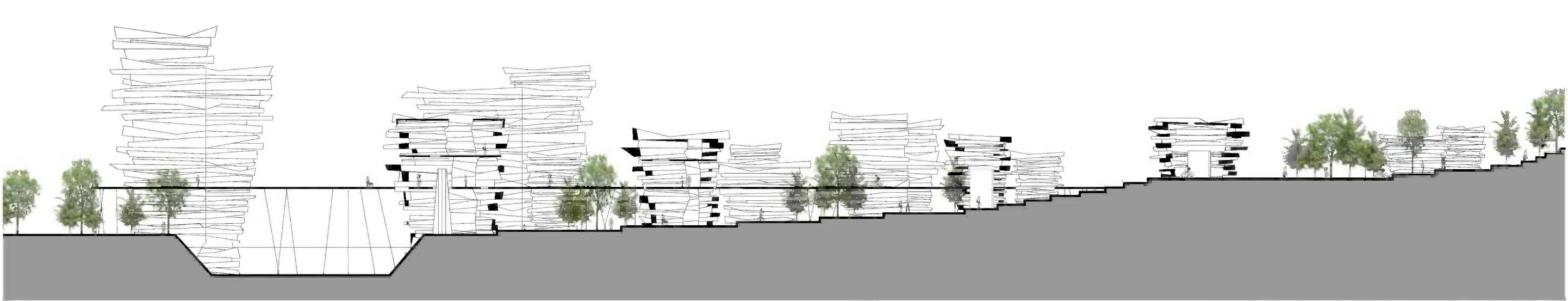
MEETINGPOINT 4 SANDBERG "MP 4 S" education\_movement\_meditation\_culture\_first aboveground floor\_m\_1:500



MEETINGPOINT 4 SANDBERG"MP 4 S"education\_movement\_meditation\_culture\_second aboveground floor\_m\_1:500



MEETINGPOINT 4 SANDBERG "MP 4 S" education\_movement\_meditation\_culture\_third aboveground floor\_m\_1:500



MEETINGPOINT 4 SANDBERG "MP 4 S" education\_movement\_meditation\_culture\_crosssection\_m\_1:500

Characteristics of the Locality

The area and the locality belong to Malé Karpaty Protected Landscape Area. Sandberg as protected collecting locality of late Tertiary fossils of sea organisms is part of Devínska Kobyla National Nature Reserve. Important moment is the presence of the Morava River as a border, flood-plains of the river with preserved original biotopes, as it was part of prohibited border zone as long as to 1990. The whole area encompasses historical as well as natural, archaeological and technical secrets. Genius loci is strengthened by the vicinity of the Devin Castle, the Morava River floodplains, two Great Moravian castle sites subject to archaeological survey, Austrian baroque chateau Schloss Hof, Devínska Nová Ves with its ancient history and a number of peoples and cultures blending together (Celts, Slavs, Romans, Germans, Avars, and later Croatsians), Sandberg with its fossils as well as 4 + 2 pylons of former unique telfer line which used to transport sand excavated from Sandberg to ships on the Morava River. Meetingpoint «4» Sandberg (MP 4 S)

I was inspired in nature - the elements such as water and wind. Array of functional objects filling the four forms of relaxation - the knowledge, movement, meditation, culture. The individual objects are café, gallery and a single object is the observation tower. Objects I focused around four + two reinforced concrete pillars. Individual objects associated bridge, which starts cycling and passes through all the objects and over the River Morava. Entrances to buildings are available from the field and footbridge. All buildings are designed as a barrier. The design envelope is designed from a visual concrete in combination glass surfaces. Interior walls are designed in blocks YTONG. Casing shows tornado surrounding individual pillars.



MEETINGPOINT 4 SANDBERG "MP 4 S" education\_movement\_meditation\_culture