

# Meetingpoint <4> Sandberg

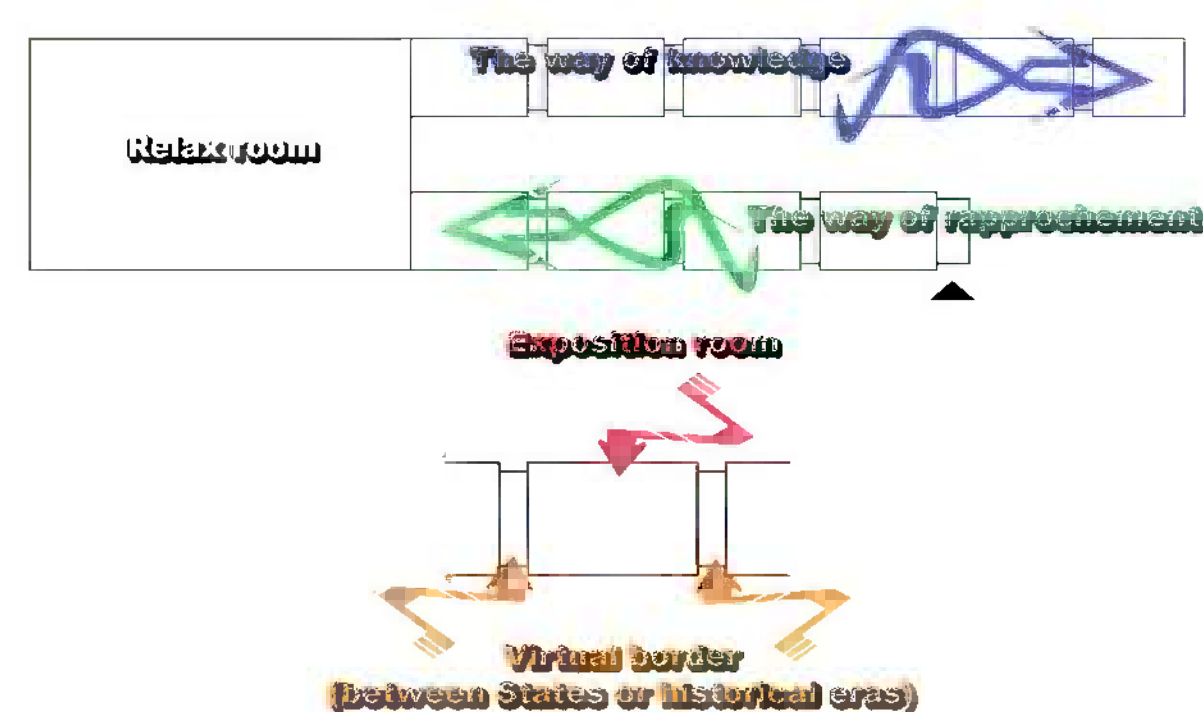


## Concept

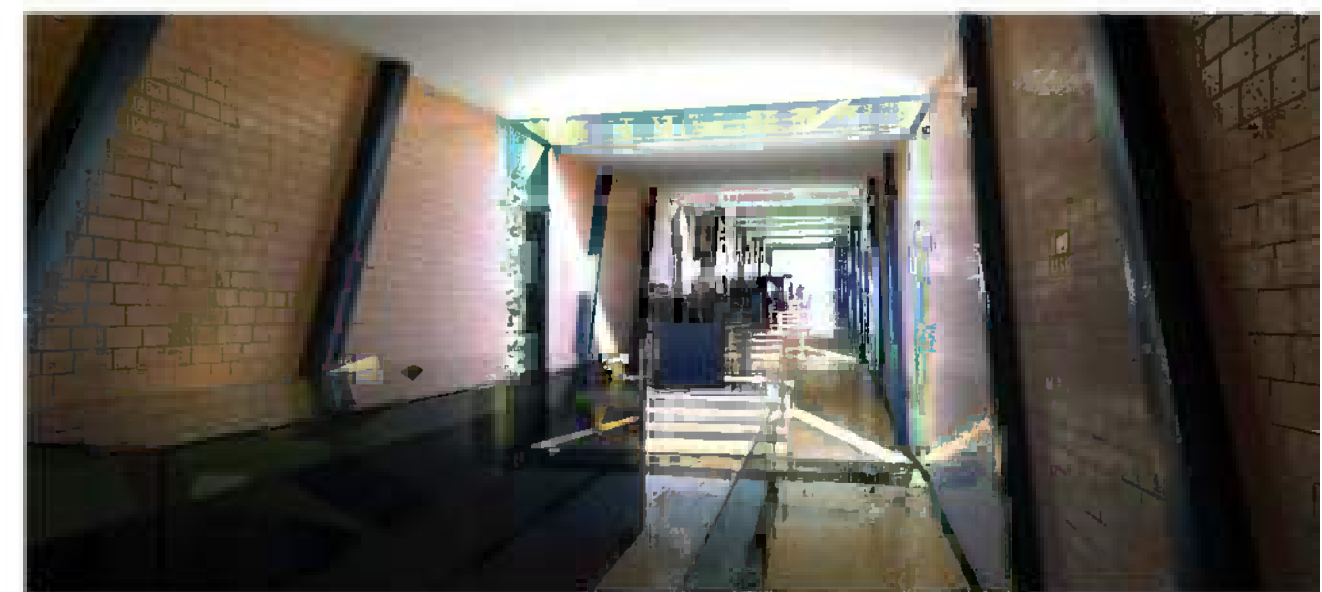
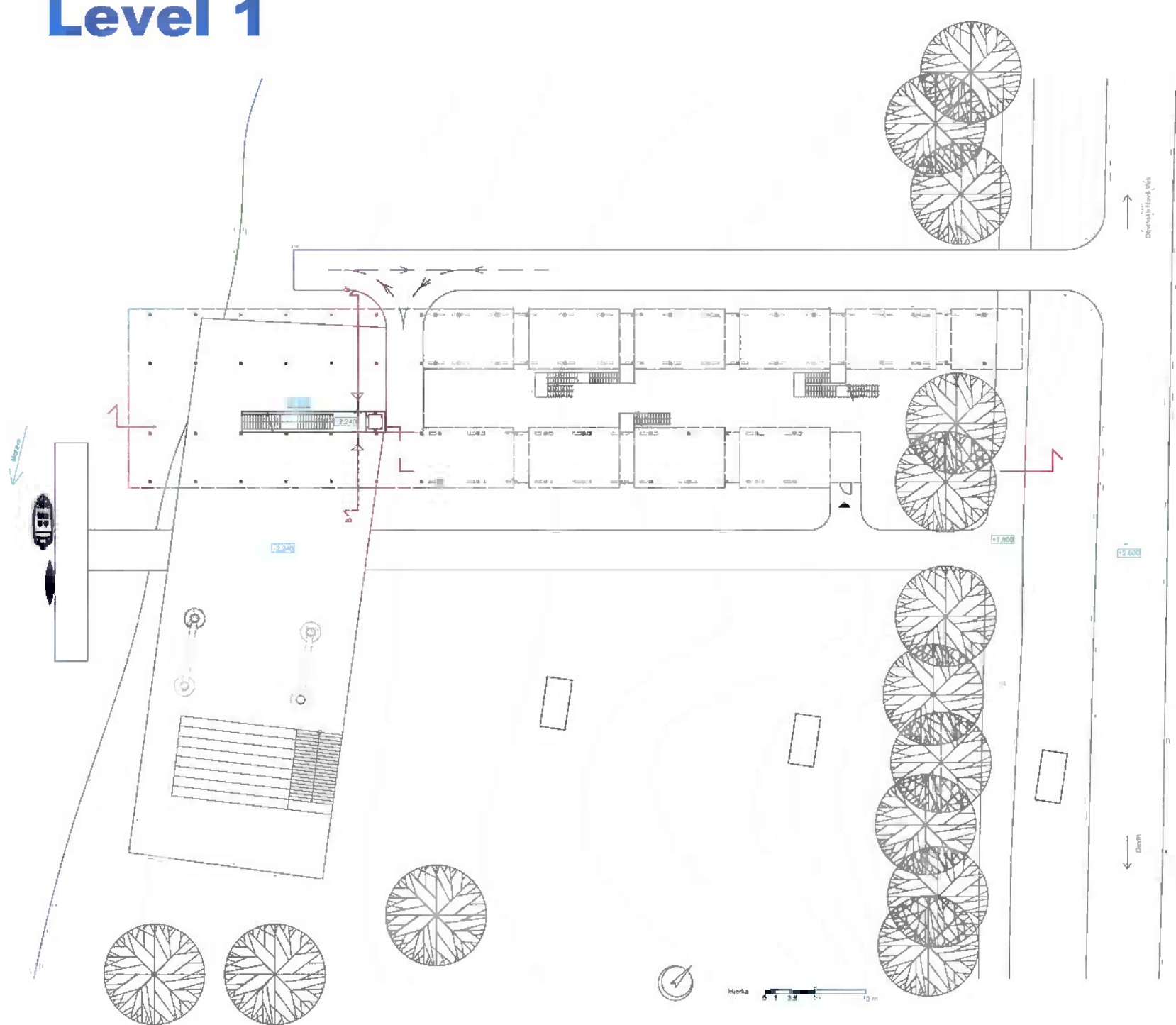
The main idea of this project was to overrun or to demolish the borders. By borders I understand the river Morava and the tree alley along the road. My building overrun this borders, goes further behind the tree alley and above the river. It is connecting the hill Sandberg with our place and with the river. It is offering us new opportunities and views. The building consists of modules connected to two parts. First, shorter, part is called The way of rapprochement. Its aim is to bring people of four nations together (Slovak, Czech, Austrian and Hungarian). Each module is dedicated to one nation. One will know something more about each country, its history, manners and heritages. Modules are separated by glass border representing virtual border between States. Longer part has similar idea. It is dedicated to the hill Sandberg and is called The way of knowledge. Each module represents one historical era of the hill. As one follows the light at the end, is knowing the history of the hill and at the end is the view toward the hill. So there is a reason to go on. Modules are separated by glass border again.

The cafe is set to the part connecting both parts. The idea of this part is to bring people together. There is a luxury furniture for break and relax. The big window directed to south offers visitors good view toward 4 columns where podium is set. This place is for cultural performance.

My main aim was to give people as many views as it is possible and to connect the hill Sandberg with this place. Columns are untouched to leave them as a memorial of the cable-car.



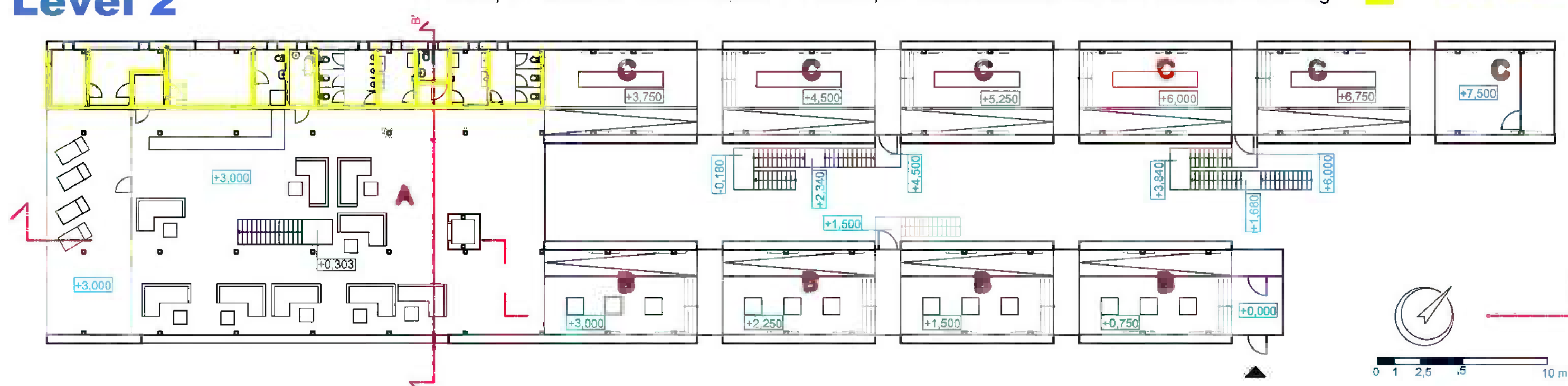
## Level 1



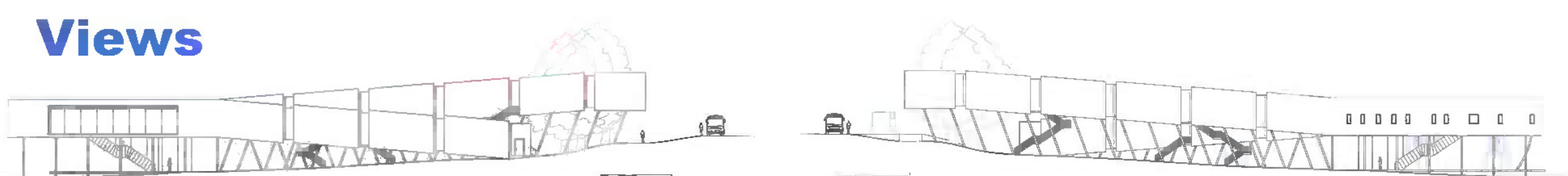
## Level 2

A - Caffe, B - Exhibition room dedicated to 4 States, C - Exhibition room dedicated to the hill Sandberg

Xella products



## Views



## Sections

