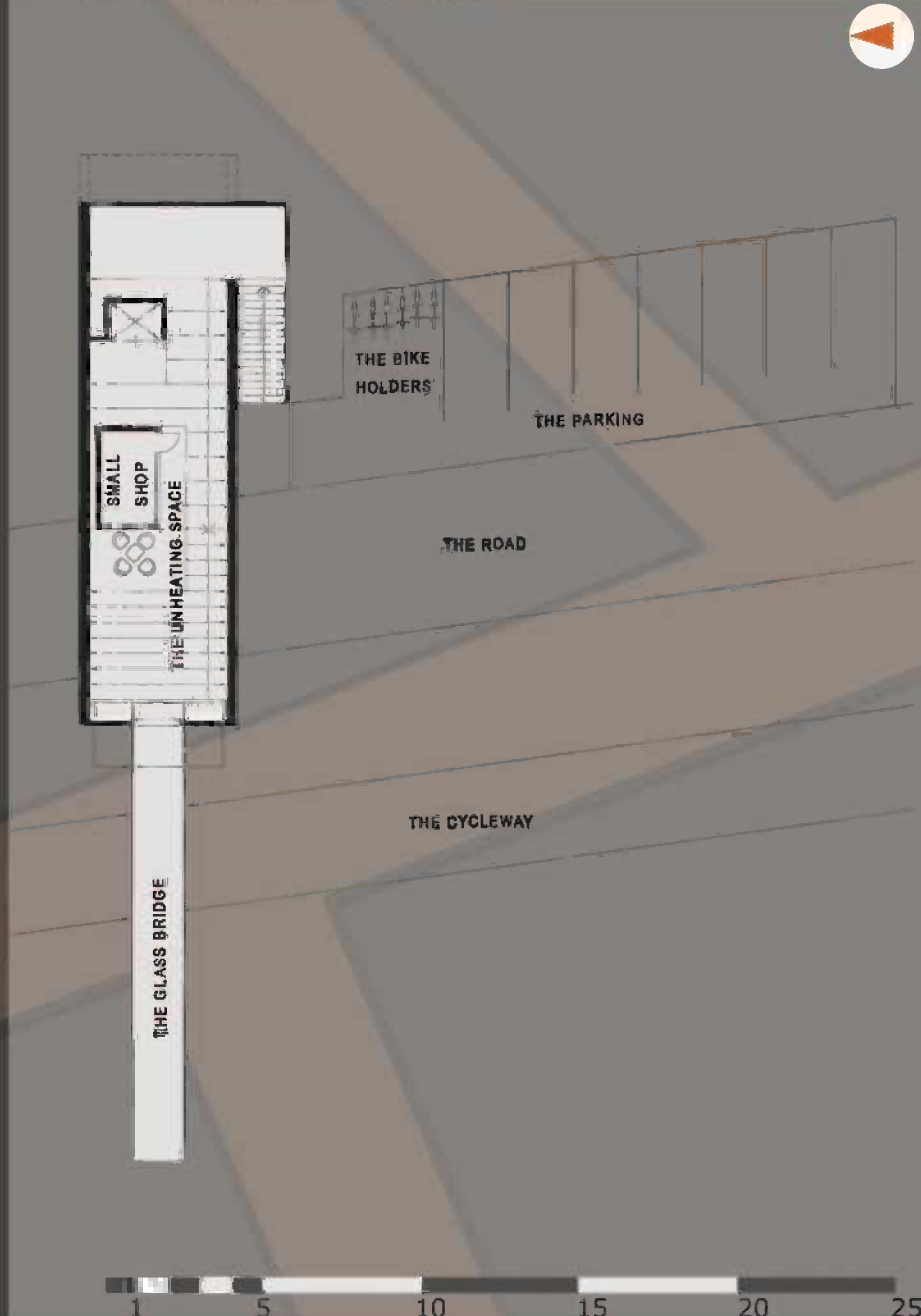


# 02\_MEETINGPOINT “4” SANDBERG\_”MP4S”

## THE INTERNATIONAL STUDENT’S EVENT FOR ACADEMIC YEAR 2009/10



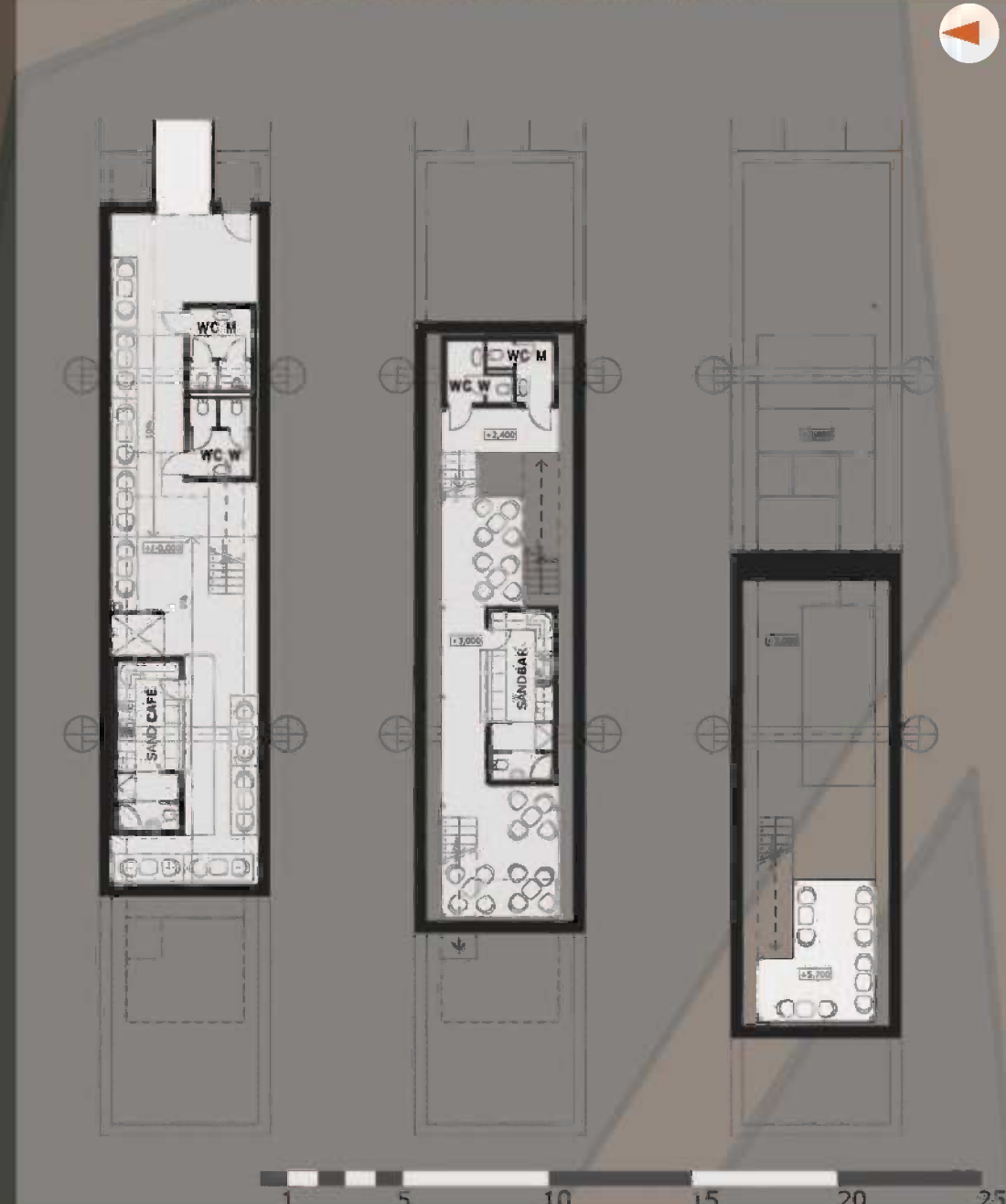
**SANDENTER**  
This unheated space provide the entrance to the Sandberg centre through the glass bridge above the road and cycle way. The parking place and the bike holder is near this object. The box with small shop is situated in this object. For the entrance to the object it is possible use a stairs or a lift for the handicapped.



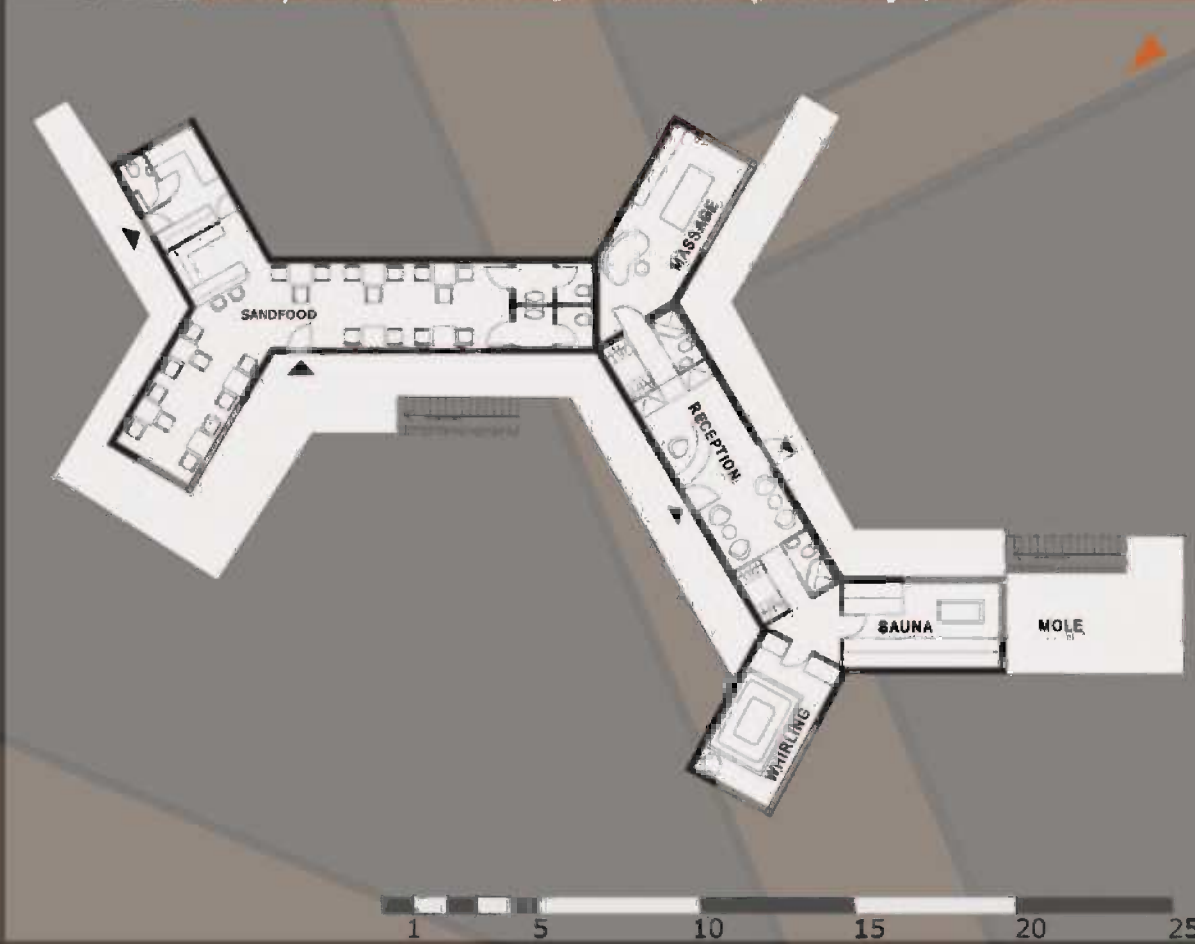
**SANDBERGINFO**  
This expressive object connects the glass bridge and serves mainly as a information centre. This object is solves as open space with suspended ceiling and boxes which divide space. We can find there the information box at the entrance, the internet access, the boxes with exhibition of photos of surroundings, the box with the history of Sandberg, the exhibition spaces, the seminar room with snack bar and the main is the cableway to the Sandberg hill in the third floor, where is situated the lift for the quick access from the ground.



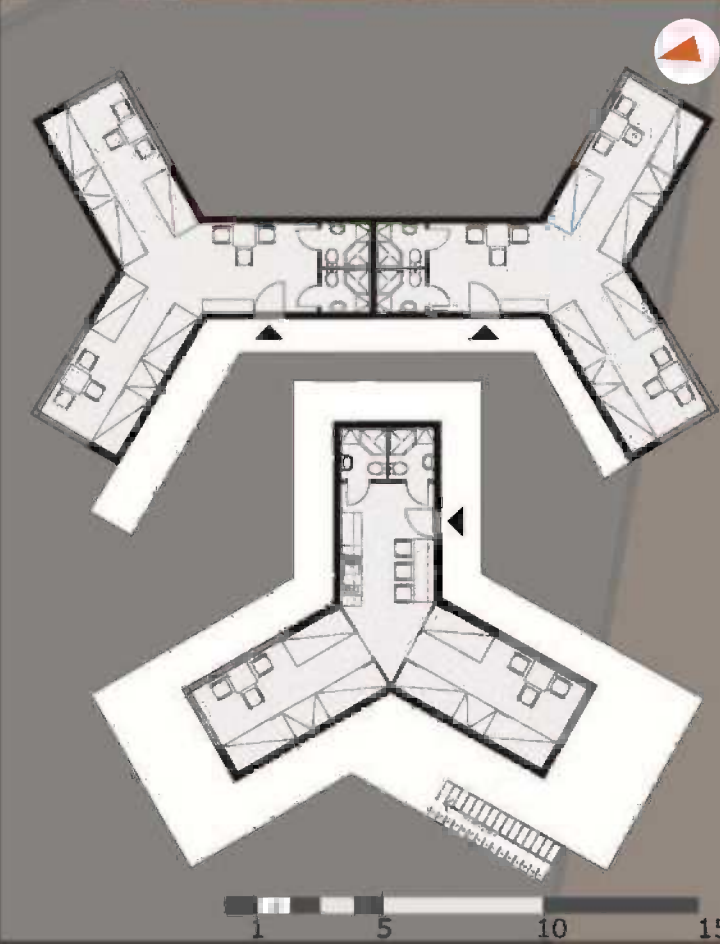
**SANDCAFÉ+SANDBAR**  
The lookout object is situated on the main pylons at the river called Morava. The similar design of this object follows up to the centre line of objects joined with glass bridges. In the first floor is situated the Sandcafé with toilets and the background of the cafe in the boxes. In the second and third floor is situated the Sandbar with toilets and background in the boxes. The boxes are design from transparent dark-orange slabs.



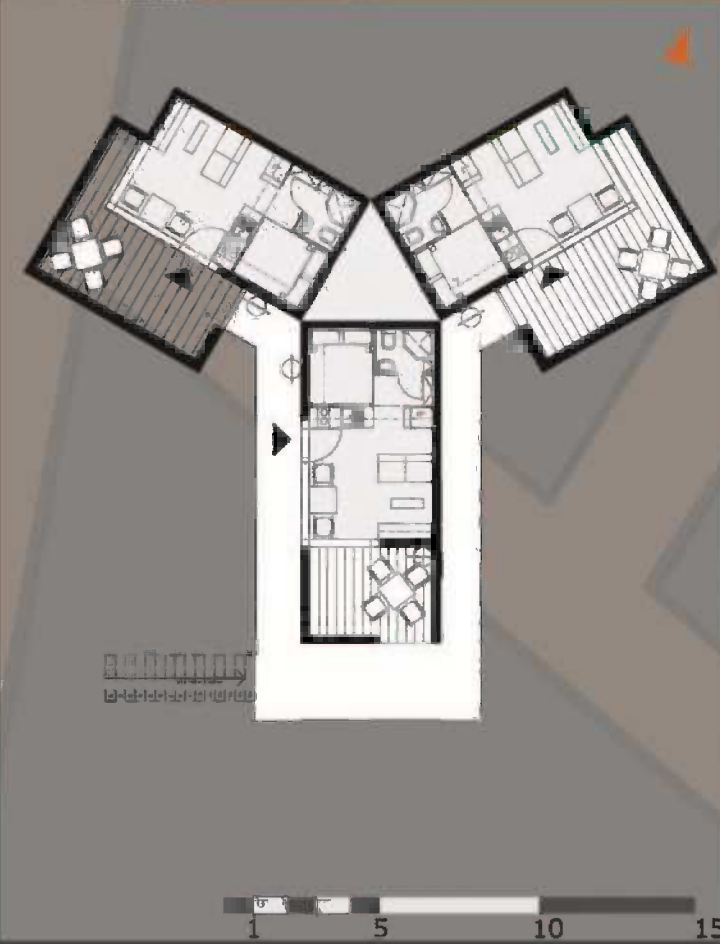
**SANDFOOD+SANDRELAX**  
The service object is situated on the right from the centre line of the objects. This object is found on the stills 2,5 metres over the ground, because floods are very often in this area. We can find the canteen Sandfood and the Sandrelax with massages, the sauna and the whirlpool in this object. The reception is at the entrance, then you must go through the cloak-room and bathroom to the service. The part of the object is over the bay of the river Morava. From the sauna is possible to go to the water.



**SANDHOSTEL**  
On the right side is situated the object with accommodation for the more people and employees. The bunk-beds with wardrobes and the bathroom is placed to the shared space. The employees can use the kitchen.



**SANDHOUSE**  
On the left from the centre line is placed small private cottages with the parking place under the object. Every one is composed of three units, which serves for alternative accommodation. The building equipment is situated between the units.



**SANDREGENT**  
Near the entrance object is placed the regent house with accommodation unit and the office. The parking place and storage of boats, a bikes is under the object. Because this small objects are also founded on the stills 2,5 metres over the ground.







**THE ARCHITECTONIC DESIGN**

The architectonic design came from location of concrete pylons in the line from the river called Morava to the Sandberg hill. In the centre line of the pylons is situated three expressive objects connect through the glass bridges. The object in the centre and at the river are designed as a stiff frame steel construction, reinforced by the wood glued beam on the side wall. The beams are 500 mm and 300 mm thick. Between the beams is the double glazing with selective layer and the argon gas for the smaller heat loss of the object. The beams, single-pitch roof and the floor are insulated by the heat-insulation. In this objects are suspended ceiling and dark-orange boxes, which are partly transparent. This boxes serves diverse functioning. The boxes are lightning at night. In the middle object is situated the infobox, the Sandfood with seminar room, toilets and exhibitions spaces, which images the picture of Sandberg hill in the history and now. Besides this the cableway to the hill is placed in the third floor. The main portative column of the cableway is anchored to the current pylon. The object at the river and partly above the river is designed in the similar way as the others. We can find there the Sandcafé and the Sandbar, with outlook and toilets and the backgrounds for the employees. The entrance to the objects is possible through the glass bridge or the stairs and lifts. Next to the lifts in the ground is placed the technical room. The next one floor objects are founded on the stilts 2,5 metres above the ground, because the floods are often in this area. This object has the green roof and are connects with footbridges. Under this the parking is placed. The access to the objects is possible from the current road through new calmed road to the every object. On this piece of land many pieces of green vegetation are founded, which will be partly conserve. The whole complex should be pleasant and fun for recreation and relaxation.



**THE AREA SANDBERG BRATISLAVA**

The range of Sandberg is situated on the left side of the river Morava, which creates the nature border between the Slovakia and Austria, not so far from small city Dávinská Nová Ves. In this range is situated the company of concrete pylons, which served as the construction for the cableway for transport the material from mining to the river Morava. This area can be very dangerous, because the floods are very often there. It was the main problem which must be solved. The land is wooded and there are many interesting naturely phenomenom. For example the Sandberg hill, which creates the wiewpoint in the surroundings or the ruin of the castle called Dávin. The hill Sandberg is protected field and is inclusion to the National reservation Dávinská kobyta. From the hill is magnificent wiew to the surroundings and to the Austrian side, to the castle Dávin and small city Dávinská Nová Ves. This attractive location needs the instrument for cover and invitation and aim the tourists so as this beautifull richness don't be affected and destroyed.

