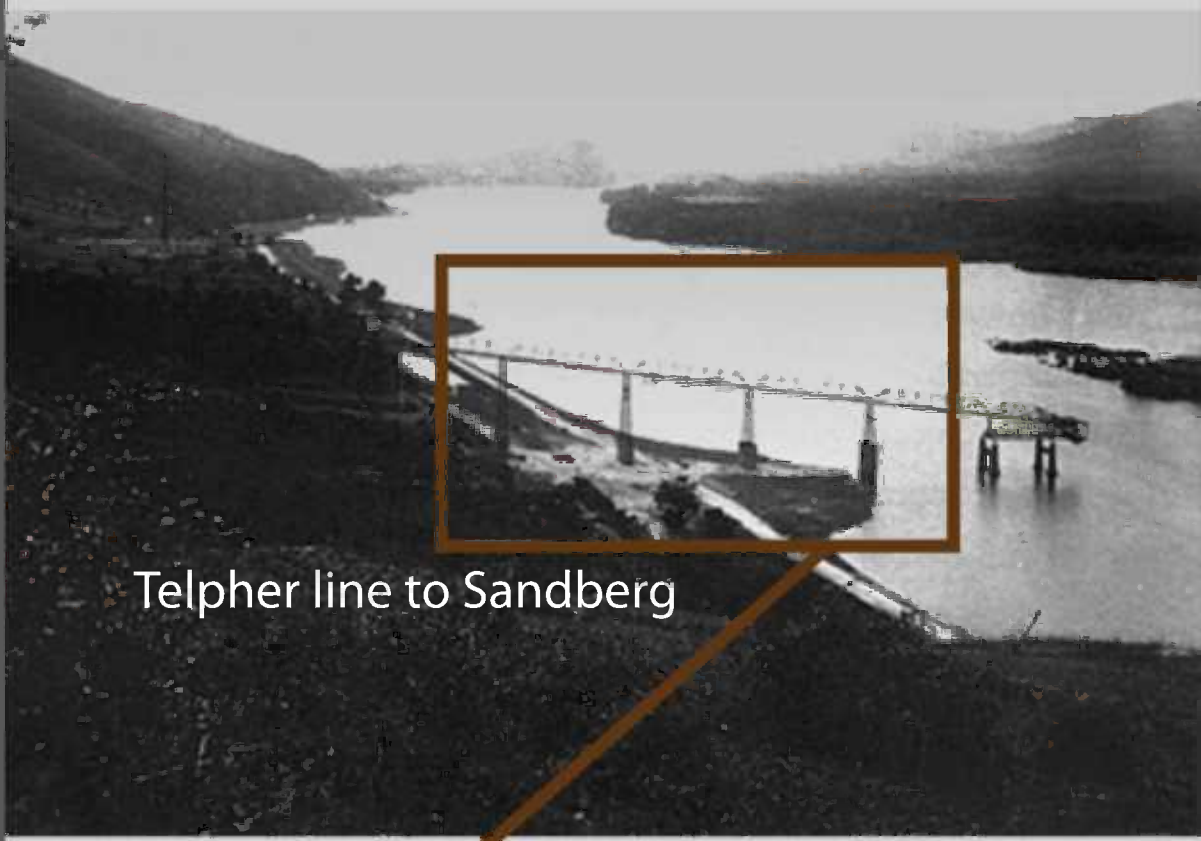


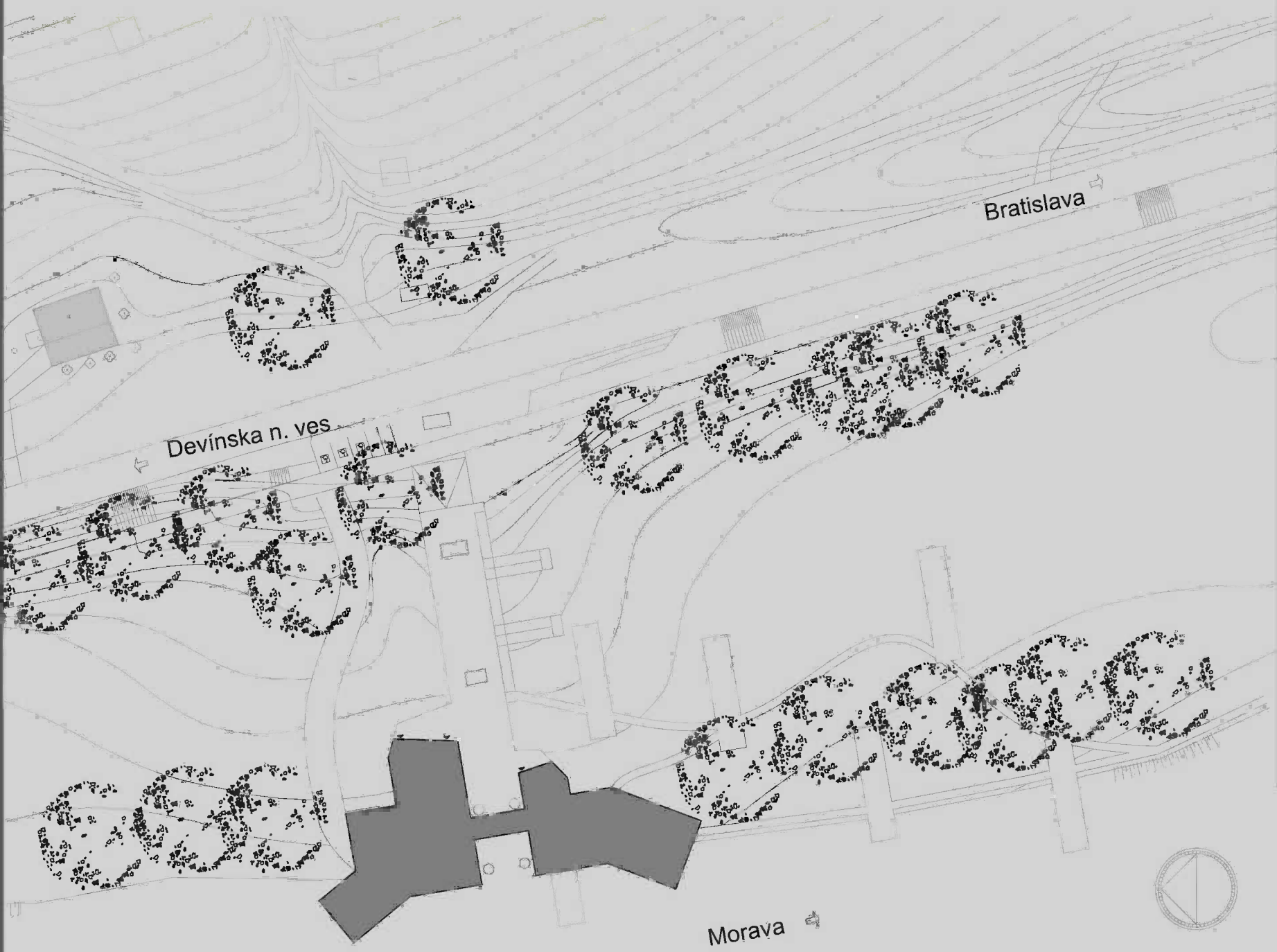
# MEETINGPOINT «4» SANDBERG - „MP 4 S“



Telpher line to Sandberg



Cor-ten steel as memento of telpher line to Sandberg



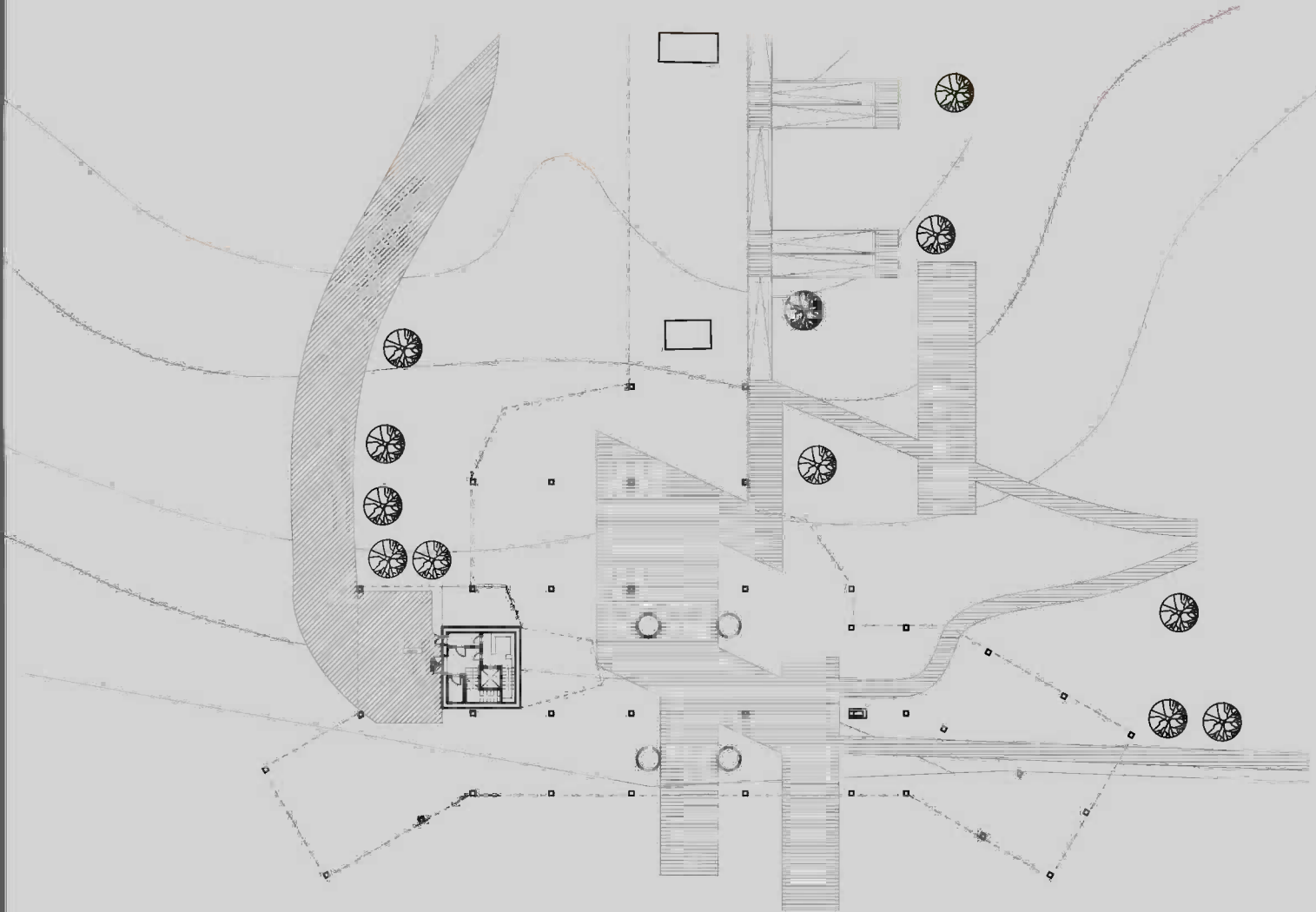
Masterplan

What actually is a meetingpoint? Place to meet? Relax? Think?... actually its a combination of all of these. It is place where people can work or relax in peace .

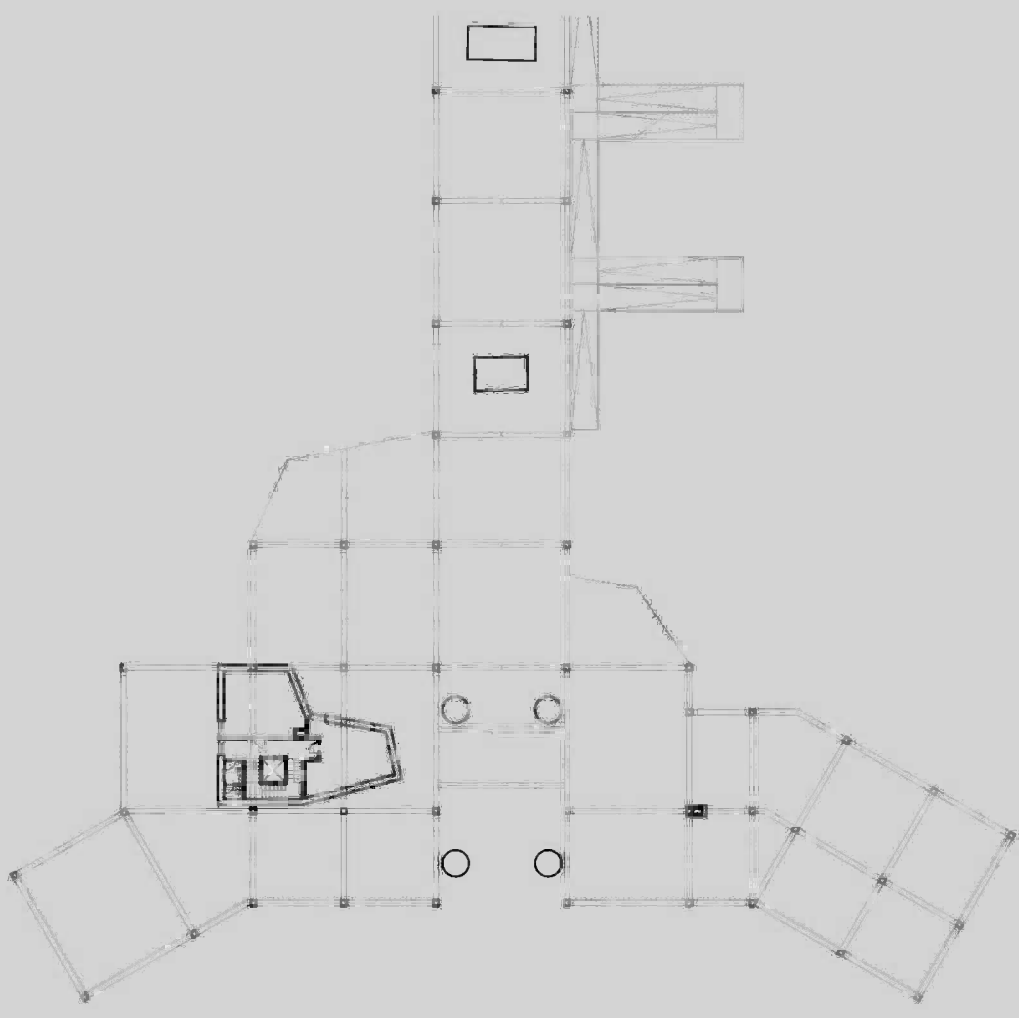
There are two possible ways of meeting people - creative and non-creative.

The whole idea of this meetingpoint is to design a place for people where they can create what they want in a way they want - undisturbed and surrounded by beatiful environment of the river Morava. That´s why the ground plan of this building is in a shape of wings bent to the river - to maximize the view of the river or trees.

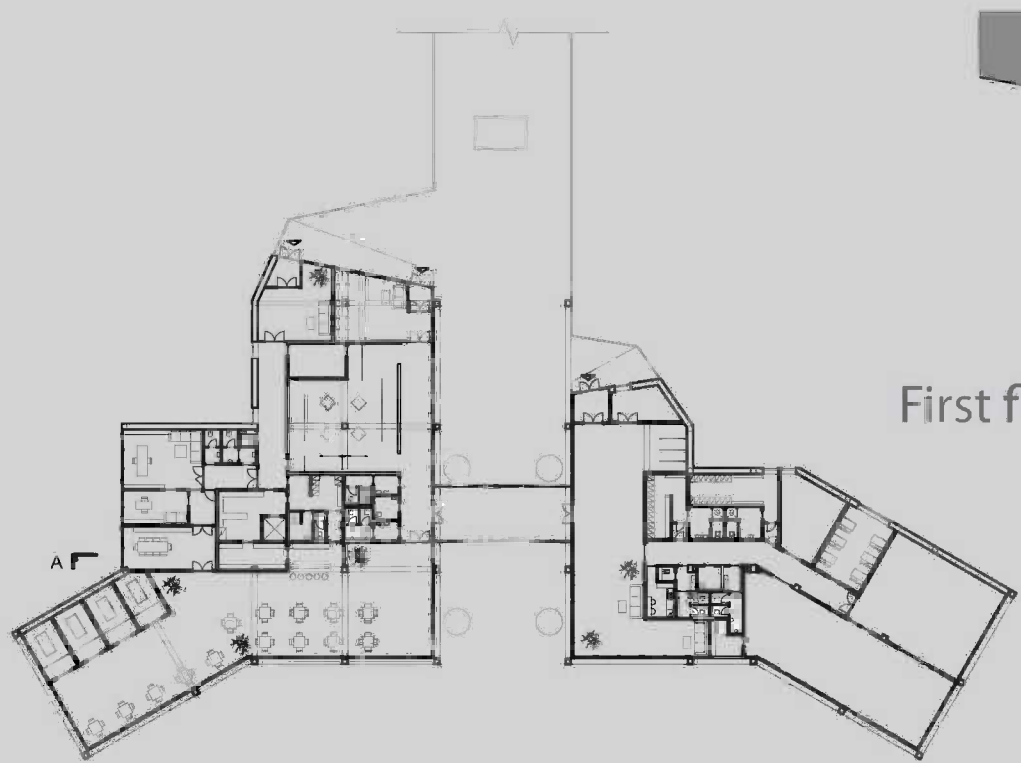
The building is accessible by foot-bridge and has three floors. The first that lies on the ground is used as a place to store supplies for tea-room. Second one is for technical equip- ment of building and in third floor there are show room, administration rooms and tea-room. There are also two multispaces on this floor where lots of various undertakings such as recollections, workshops, courses and lot of other activities for soul up- heaval , abilities and talents develop- ment could be organized.



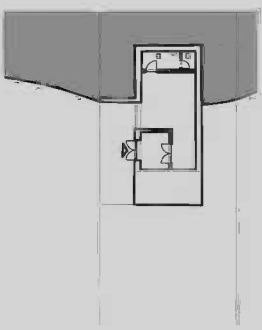
Ground floor



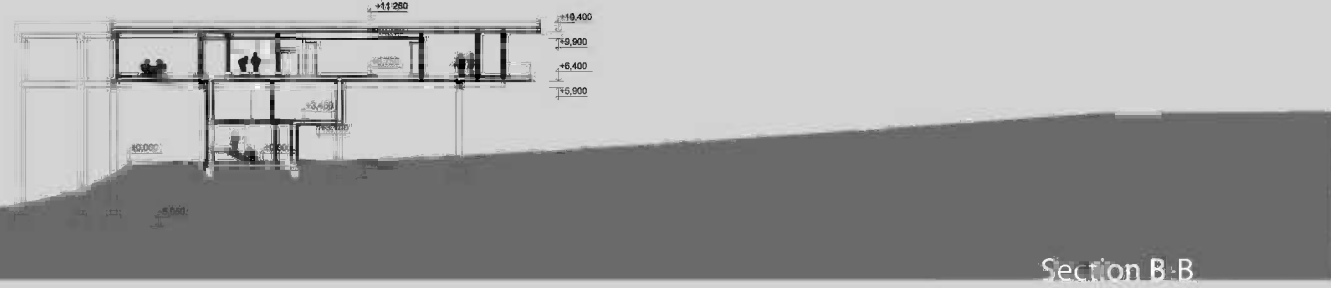
First floor



Third floor



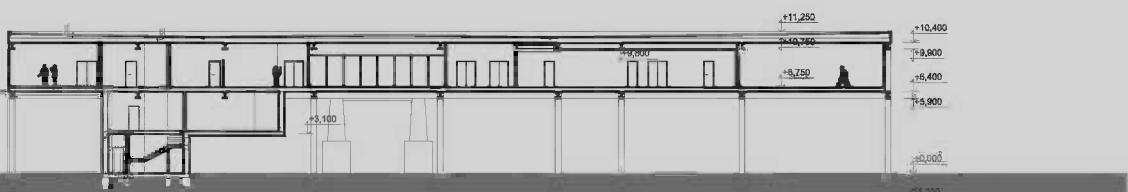
First floor - second building



Section B-B



Section C-C



Section A-A

Smaller second building as a storage area for gardener/janitor and its located behind fourth pylon.

Under the building, where are people protected from rain, sun and snow there are wooden walks and spaces fit for openair exhibitions, concerts ... People can sit in grass, watch movies, watch actors or just hang out.



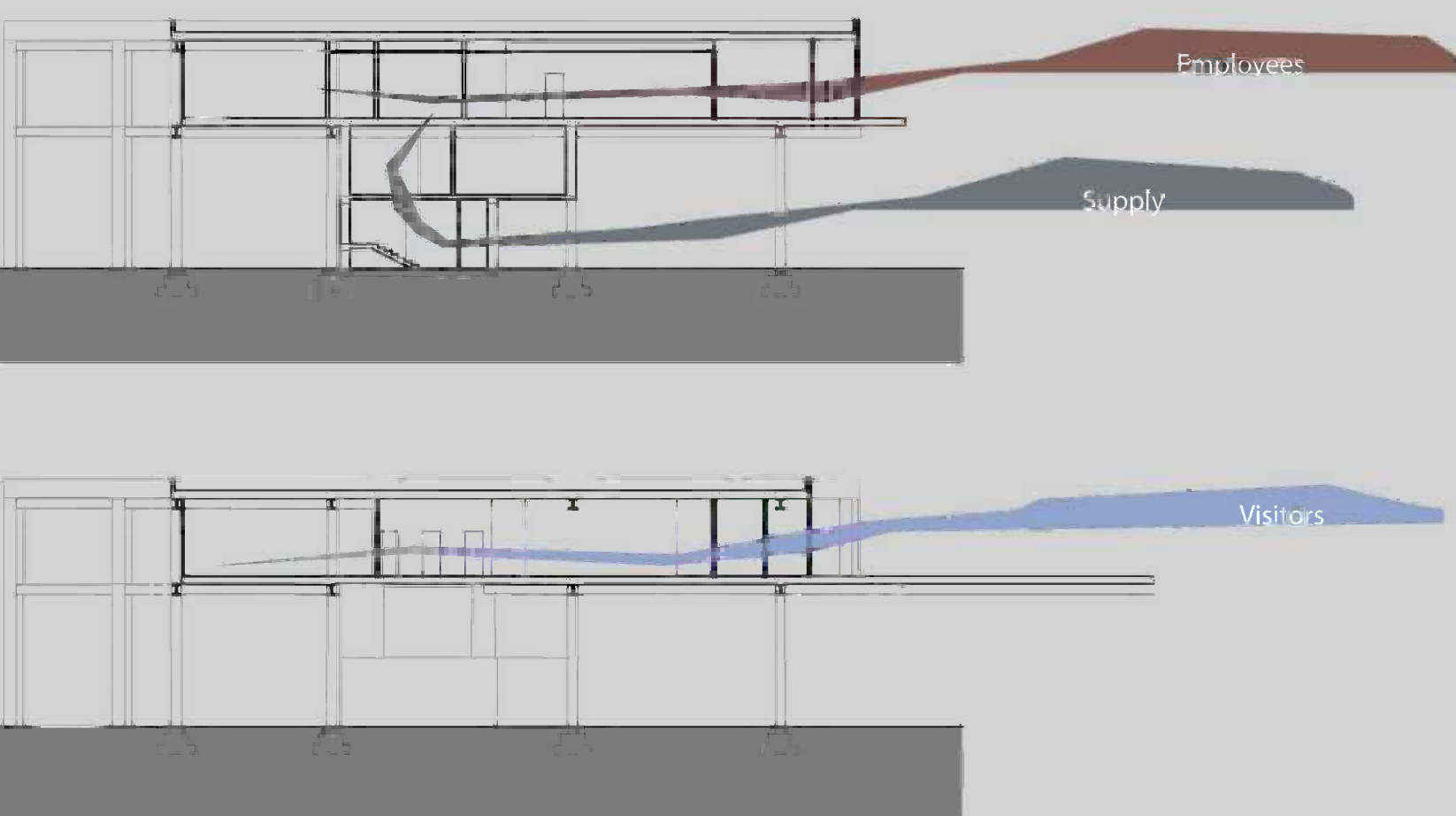
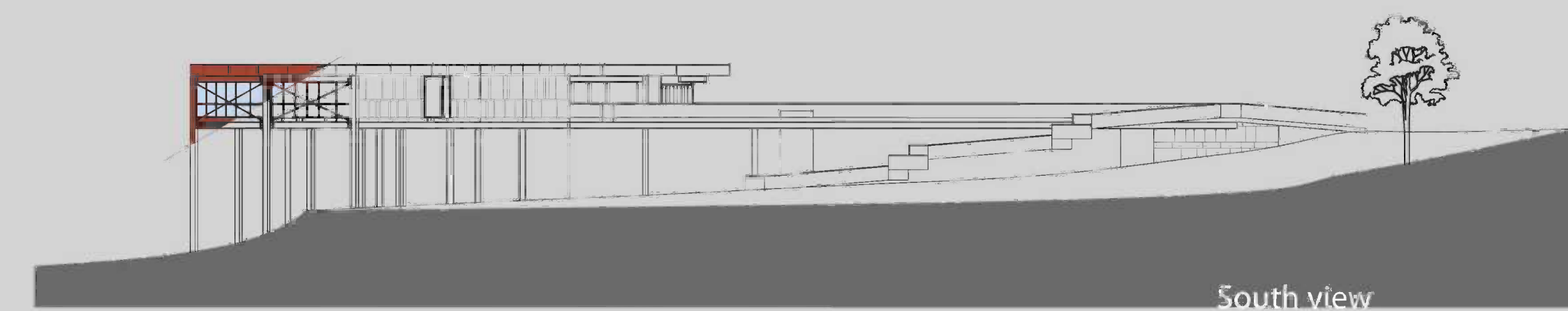
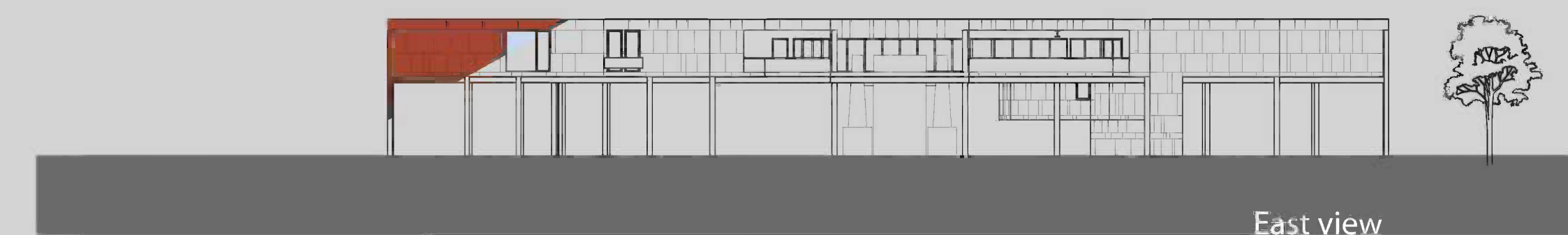
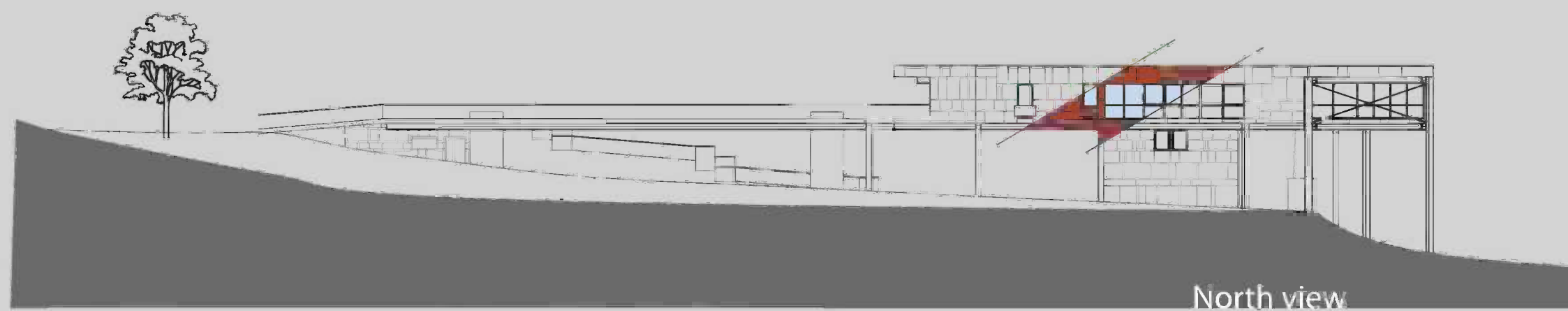


# MEETINGPOINT <4> SANDBERG - „MP 4 S“



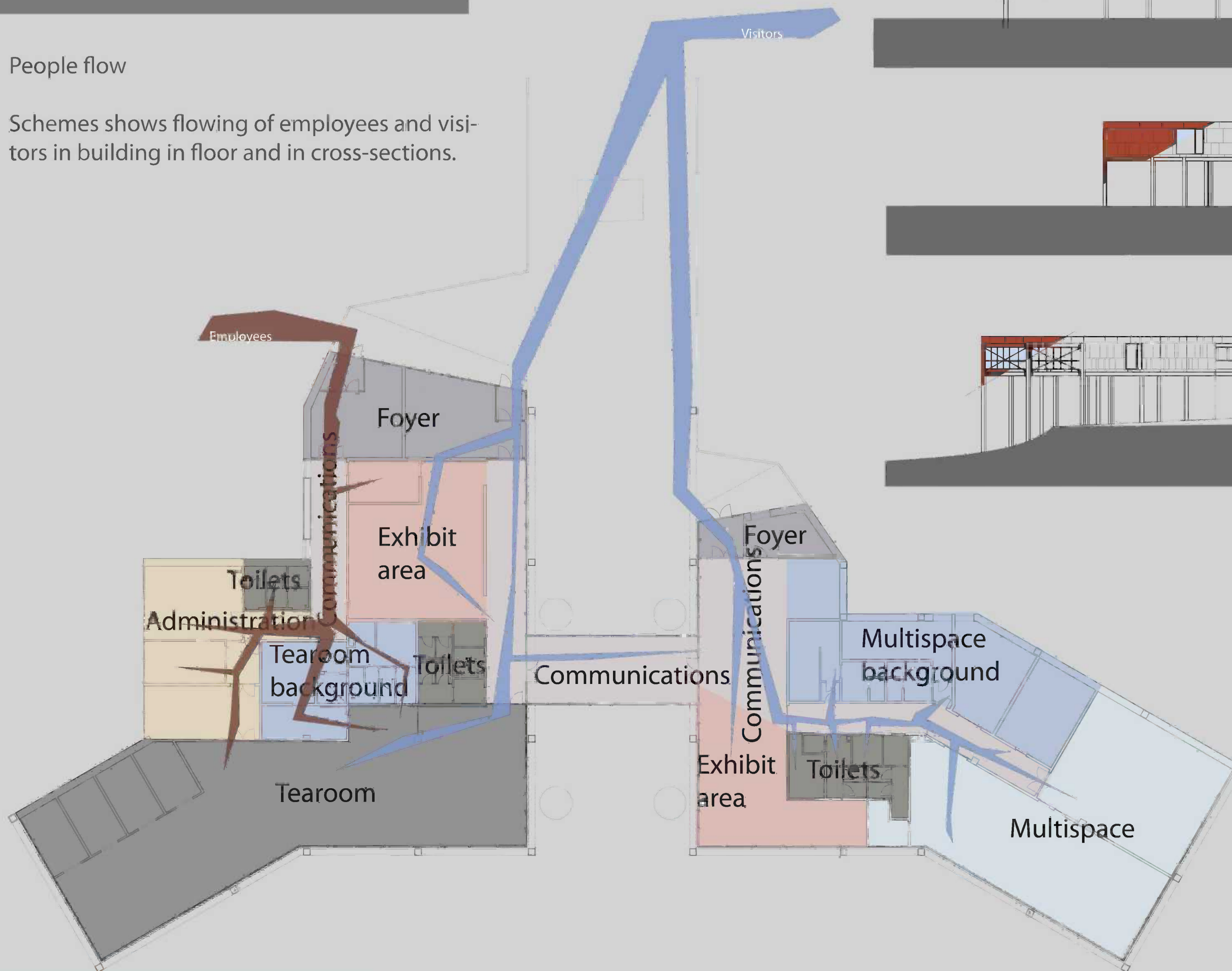
## Views

Horizontal composition of building is inspired by water-table



## People flow

Schemes shows flowing of employees and visitors in building in floor and in cross-sections.



Exhibitions under the building

Protection against rain, snow or sunlight.

Building is designed as a steel frame structure and its facade is covered in cor-ten steel plates.

People from neighborhood or from far away, cycling or just walking nearby also wants to refresh, possibly with beautiful view.

## Pylons

Two pairs nearest to the river are separated. First pair just is outside of building and the second just as third and fourth pylon protrudes through floor of foot-bridge.

