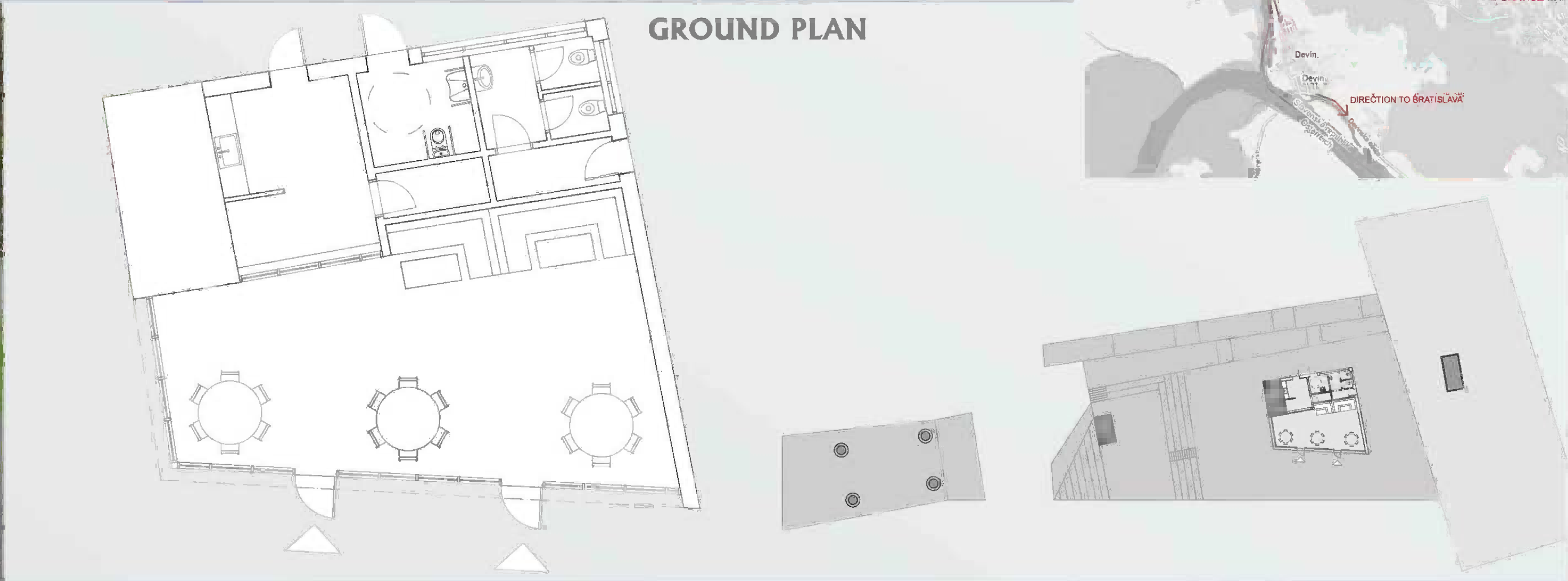
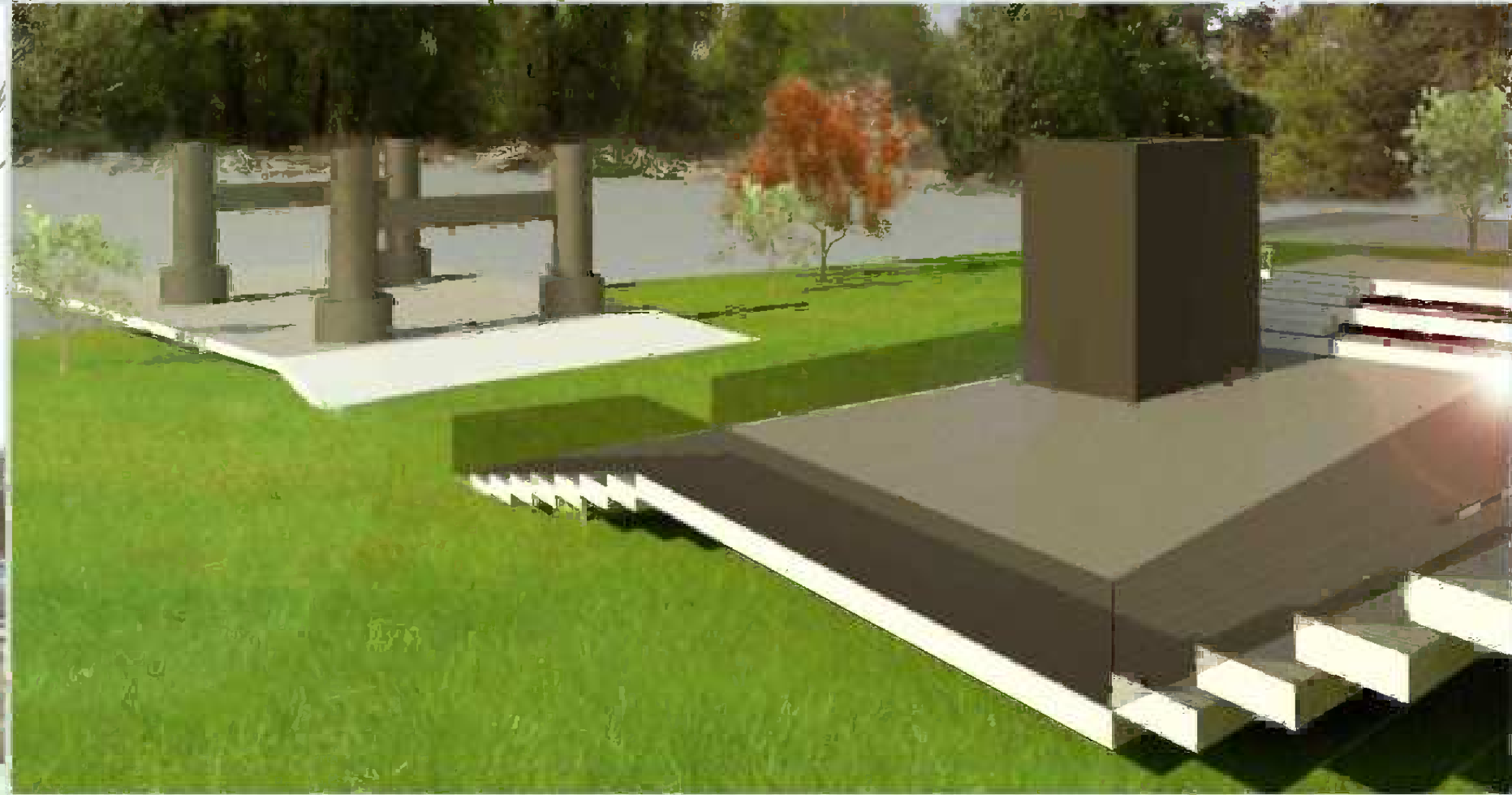




MEETINGPOINT 236284

SANDBERG



Our designed area is situated in Bratislava, in urban part called Devínska Nová Ves, which is little bit isolated from the rest of the town. The area is defined by cycle path and by river called Morava. In this locality, there are no bigger buildings, just cottages. In neighbourhood there is meadow wood. Our object lies near the cycle path, in front of it there are designed parking places.

We have designed the space near pillar columns, where we covered functions of: **KNOWLEDGE** – exhibitions composed to the pillar columns, **RELAX** – sitting and relaxation with the view on the river Morava, **ENTERTAINMENT** – cultural events, that is the reason for building a stage. The pillar columns are composed to the new created space. We have used also pillars near the river for the view-stage. Our building follows the symbolism of number 4, what you can see in the ground plan.

4 fields of knowledges

- NATURE – we were trying to be soft to the nature
- HISTORY – located info-boards about history of this area
- TECHNOLOGY – preservation of the old pillar columns
- ART – possibility of events

The area was disturbed by architectural accent, but it is trying to follow the terrain. We were trying to not disturb this place very much.

The object is located on the platform, it has one floor and it is trying to follow the shape of ramp, what we can see on the roof – swelling (represents the water). From the south is the entrance to the object. There is designed the glassed wall – for the better view on the river. The place from the west side is designed like the place for the sitting and also relaxing. From this place you can come to the river by the ramps, which have also the expositional and cognitional character.

Our object has two entrances, oriented to the south side. You will enter the place, where you can buy something to eat, or just sit and rest. The entrance to the kitchen you can find from exterior, where you can find also the entrances to the toilets.

The full parts of this object are created of the material from YTONG and refaced by special plaster.

This should be the area, where people have possibilities for relax, because our architecture is providing them the space, which is whole just for the people.

