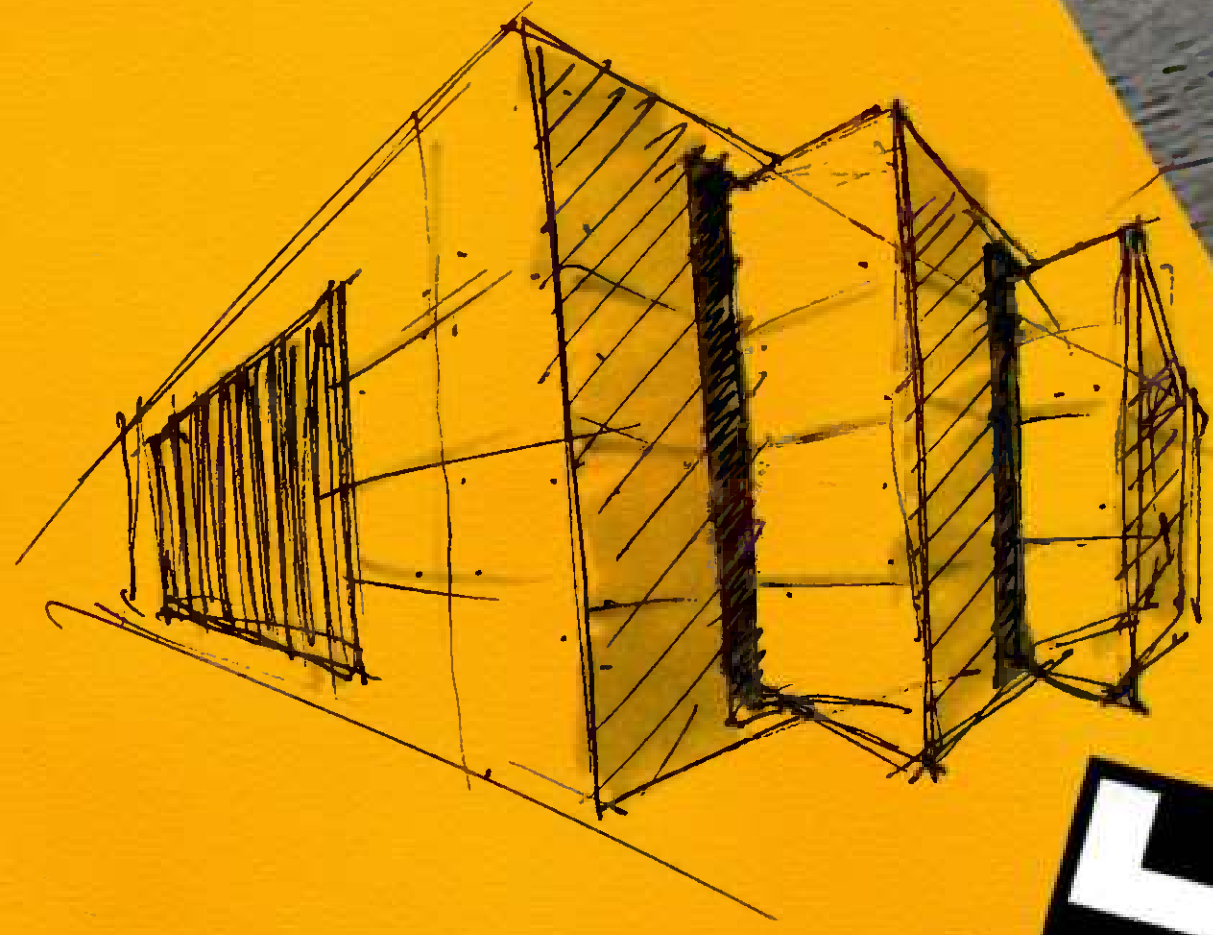
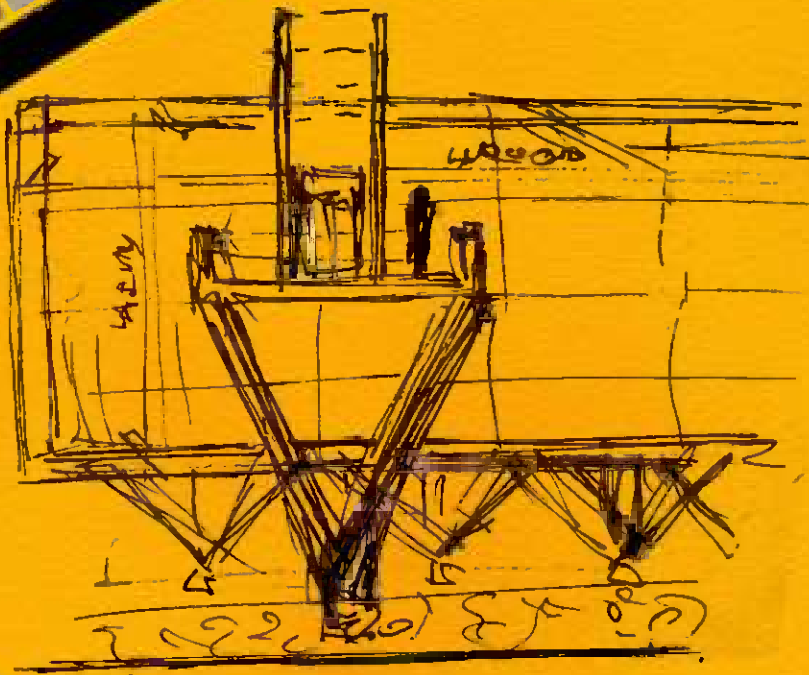


MP4S is a polyfunctional object situated near the root of Sandberg close to Devínska Nová Ves in Bratislava. The main idea of the project was to vitalize four huge pylons of former telpher line for transport of sand excavated from Sandberg, which are located between the cycling path and the Morava River. The pylons are incorporated in the structure bearing the construction of the lookout above the river and the access walkway.

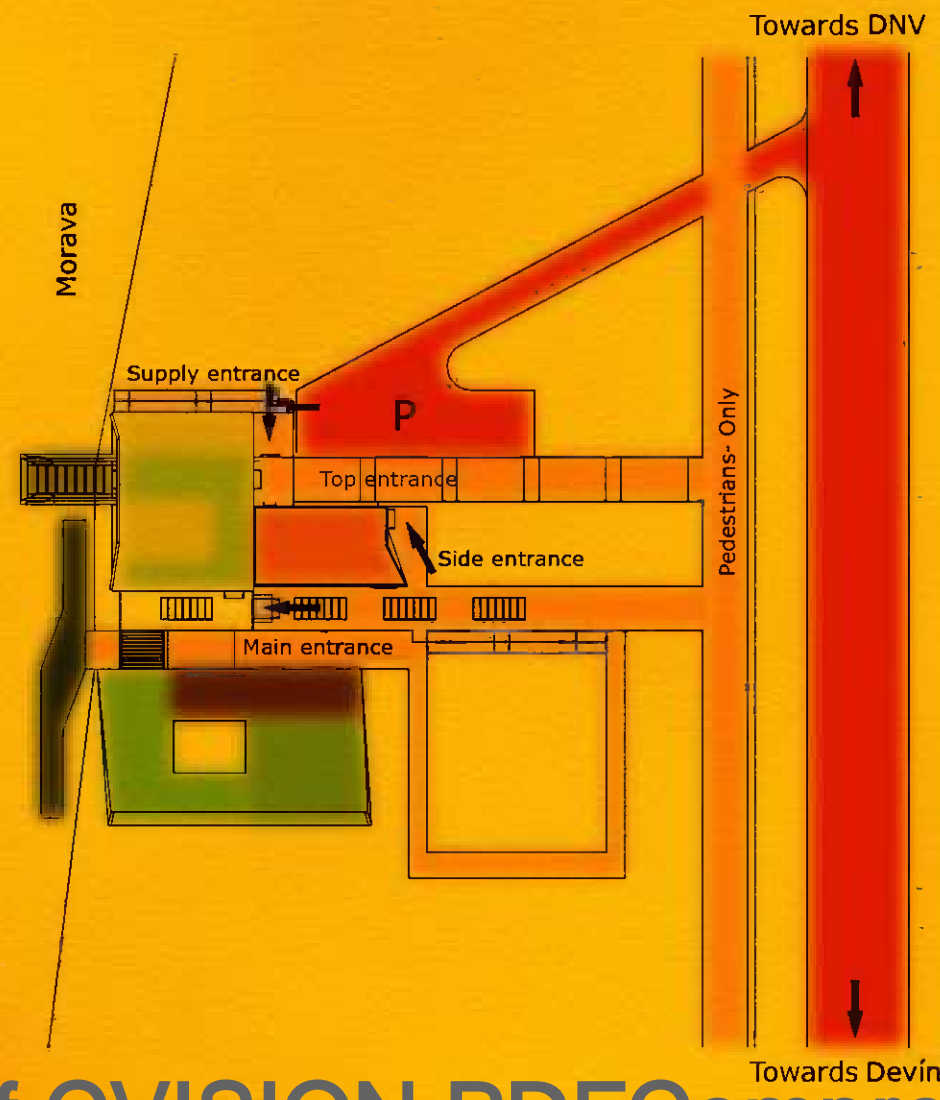
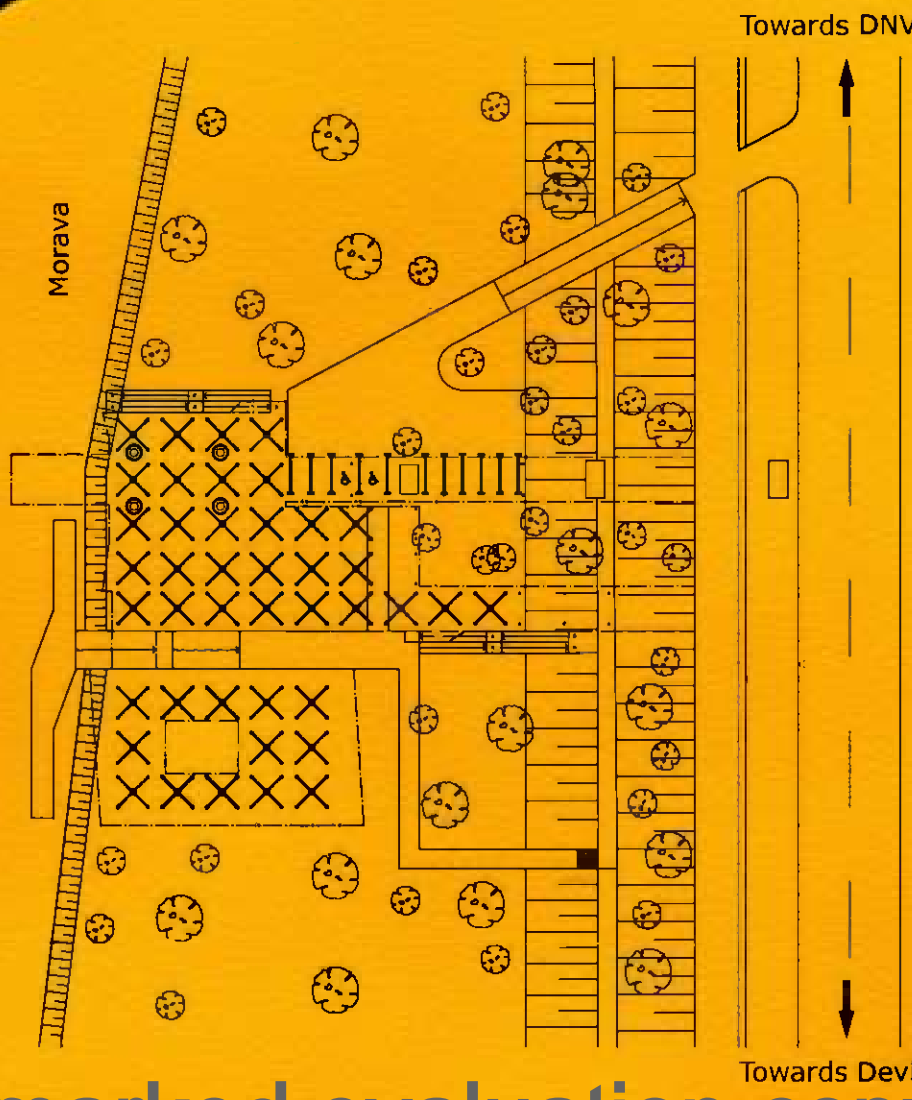
The object joins the function of theatre, museum, gallery, coffee-bar and lookout above the Morava River. The theatre and the museum is located in a semi-separated part of the building. The coffee-bar is in the northwestern part. The gallery is above the coffee-bar connected with the lookout above the river. The capacity of the theatre and the coffee-bar is around a hundred of visitors both.

The building stands on the steel branched cross supports, bearing steel spread grill. The upper structure is made of aerated concrete blocks and laminated wall panels. The roof is carried by wooden glued columns and beams or reinforced concrete deck. The cladding consists of composite wall panels and the walkways are covered with composite boards.

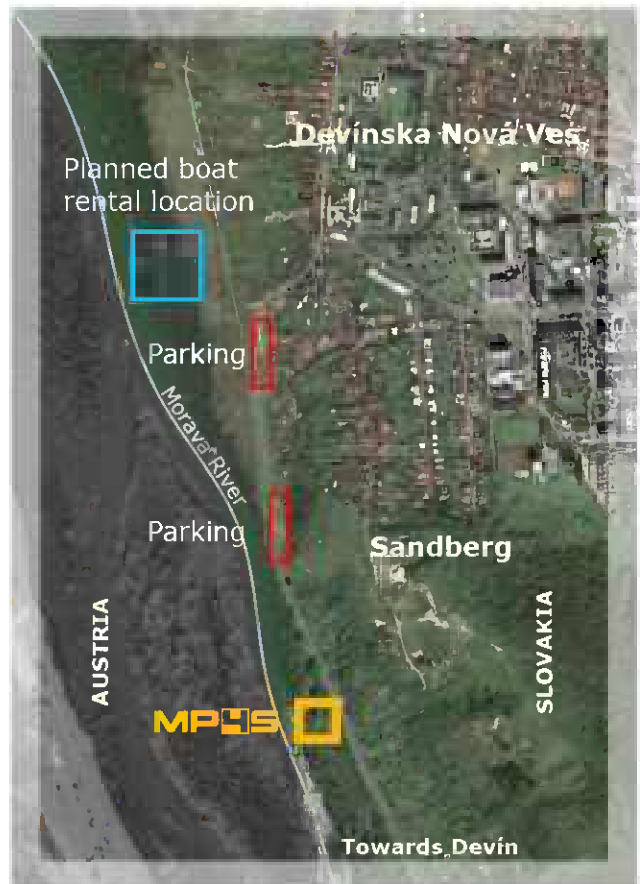
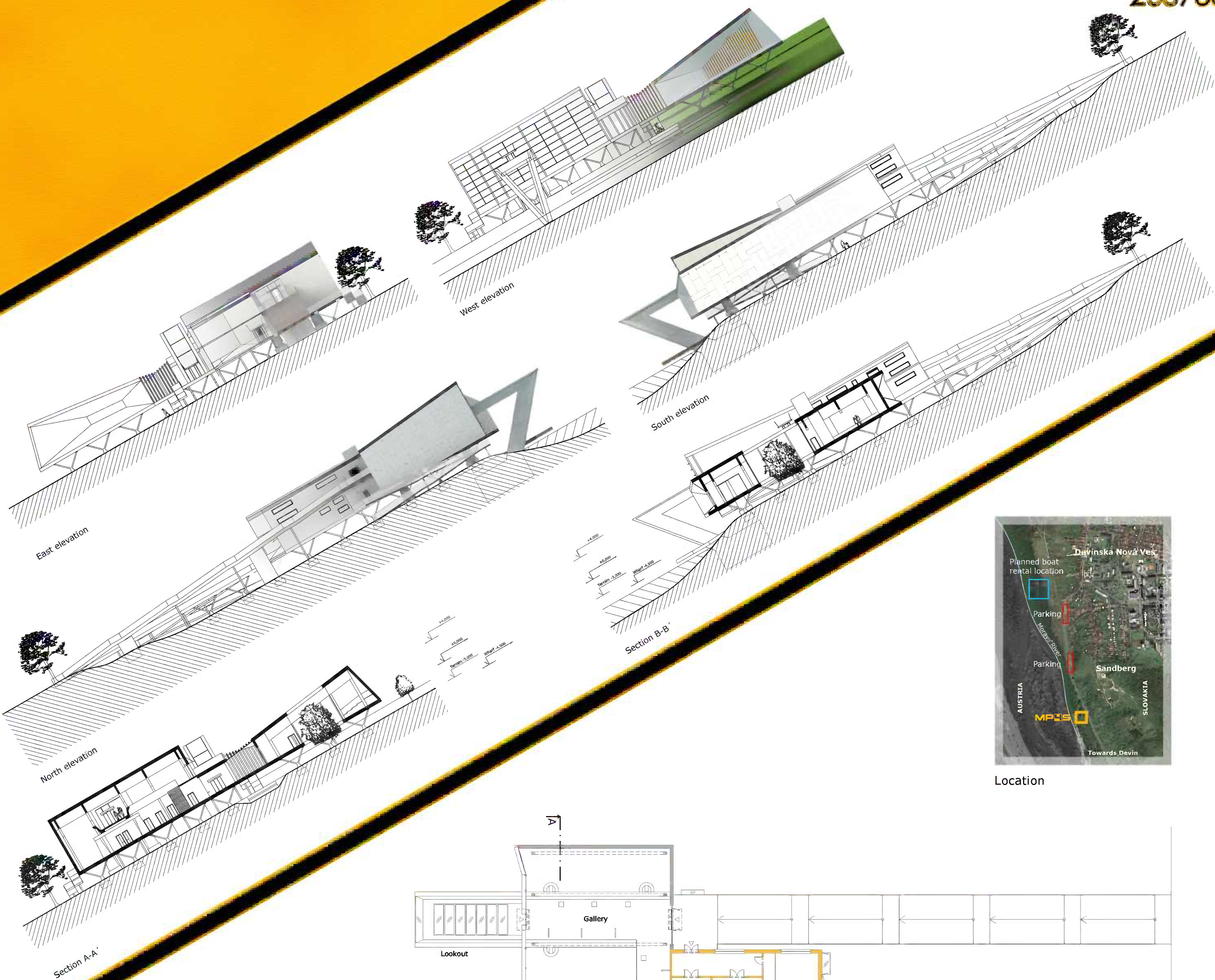
Every door is at least 900mm wide. Most of them are sliding. All is designed in a barrier-free standard, therefore you can reach every place by a ramp with a maximum inclination of 1:12 and 9 meters long, including the lookout.



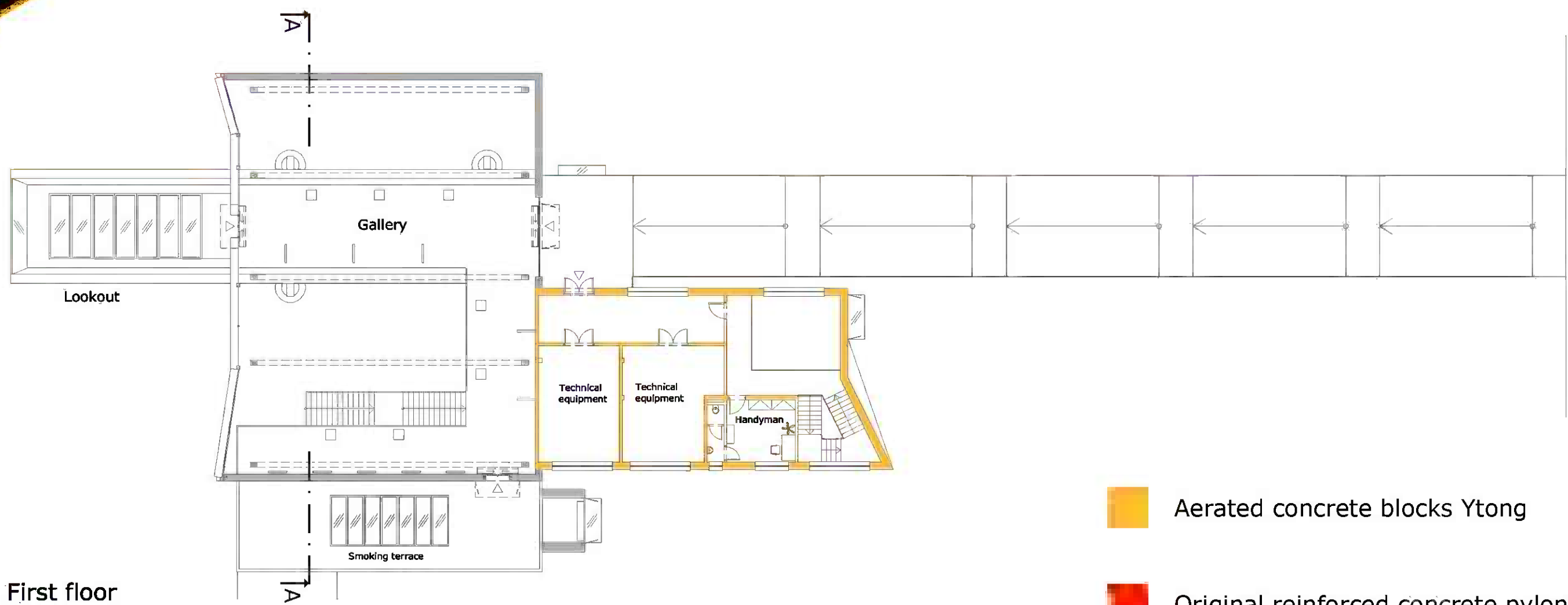
- Roads
- Walkways
- Wharf
- Theatre
- Exhibit area
- Backstage
- Lookout
- Coffee-bar
- Premises





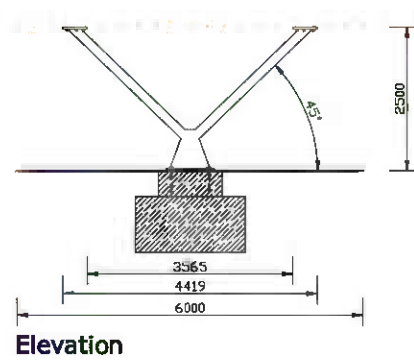
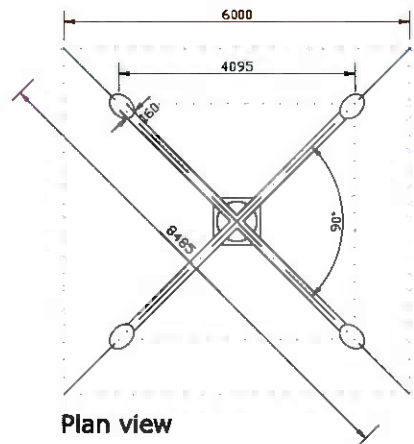


Location

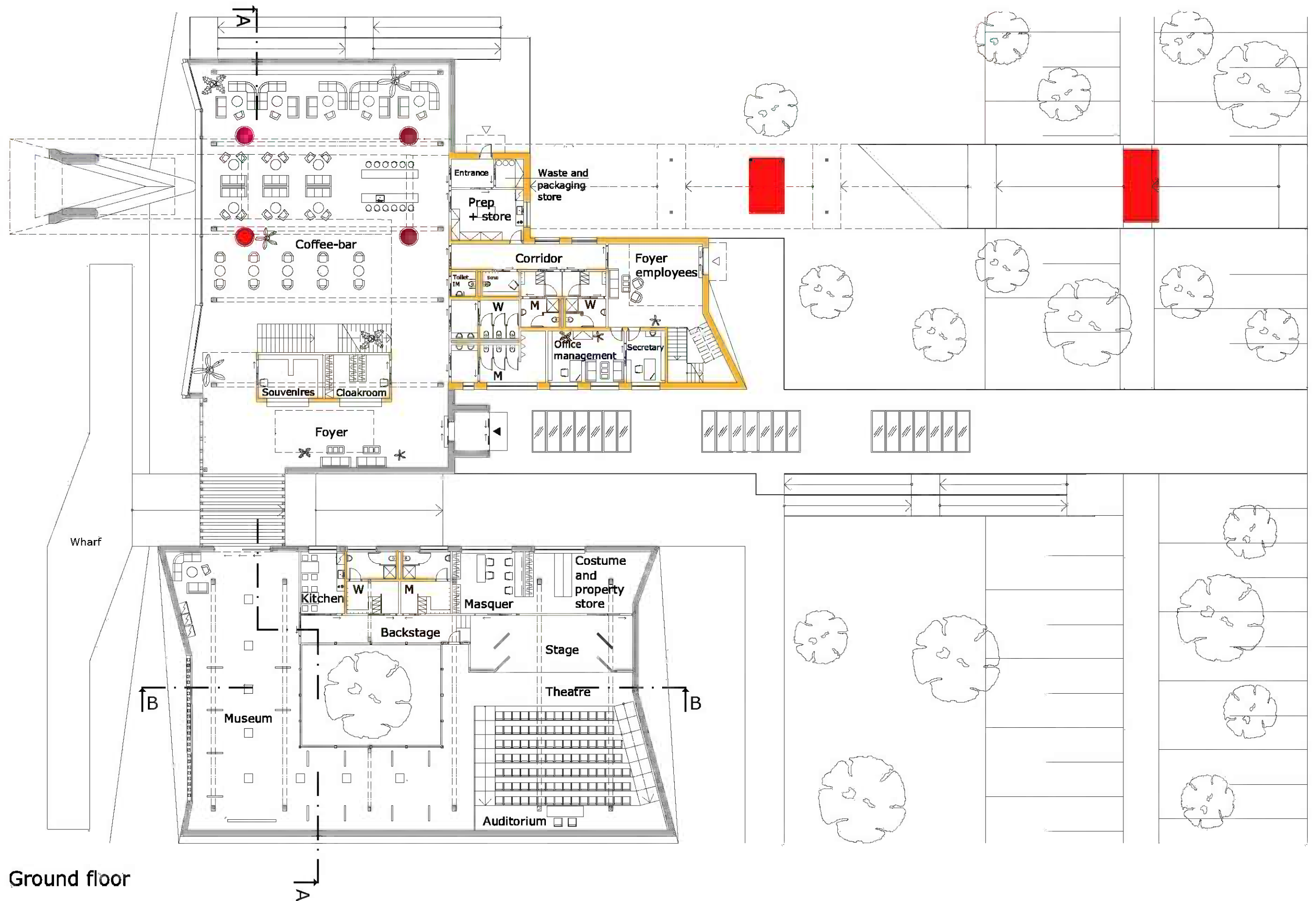


First floor

- Aerated concrete blocks Ytong
- Original reinforced concrete pylons



Detail of the support



Ground floor