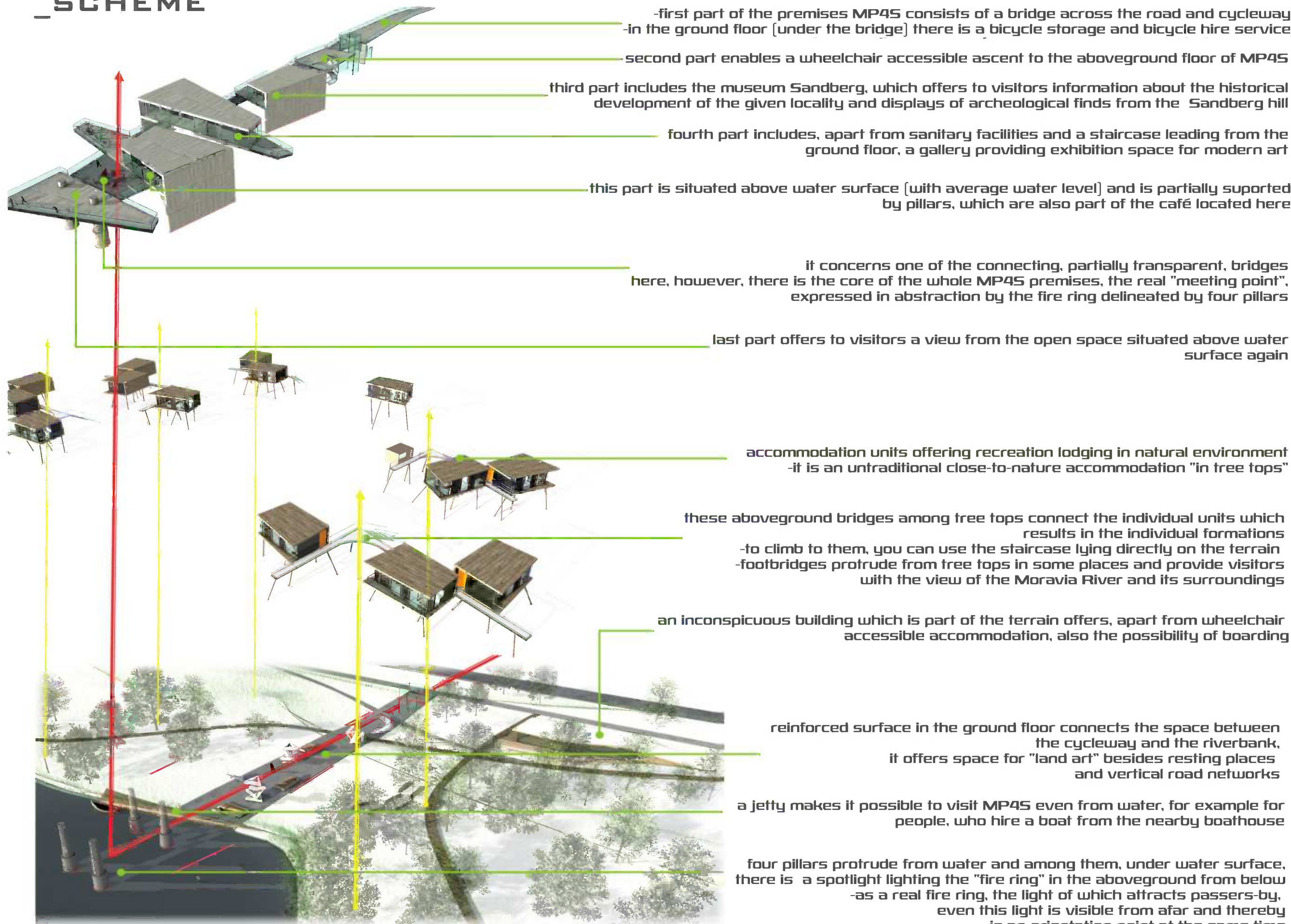




_INSPIRATION



_SCHEME



MP_4_S

Meeting Point for Sandberg...

Its very name indicates that it is a place, where people will meet to forget their everyday problems, to take their minds off things, to meet their friends and to enrich their day by entertainment, culture or just by having a rest.

From time out of mind, one such meeting place has always been the campfire ring. The natural instinct of a man to pursue light and warmth results in the fact that this place is the oldest natural "meeting point" of all. My design is guided by this motive, among others. The fire ring, even though it is not real but only expressed in abstraction by a glass sculpture, is situated within four pillars delineating its space. The fire ring is located above water surface, from which it is lit by a spotlight in vertical direction. As with the real fire ring, which attracts people from vicinity by its flashes of light among trees, even here it is apparent from afar where the meeting point is located. This also expresses a kind of reconciliation of fire with water, as the light of the fire directly comes out of the water.

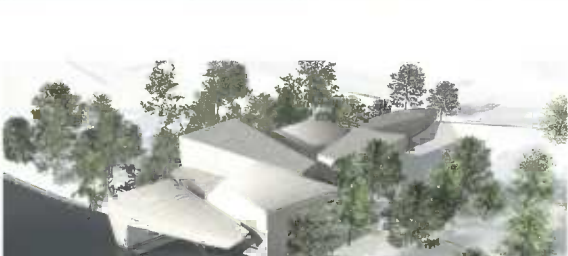
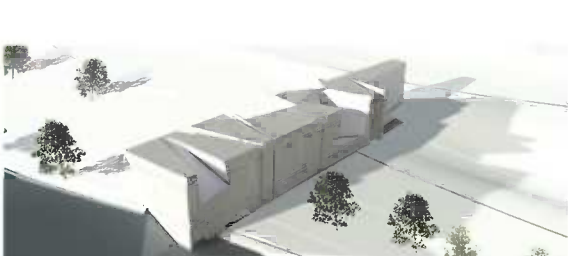
Reconciliation or dialogue is another element, which permeates the whole design. As I already stated, it is a place where people take their minds off things and even individuals with otherwise different opinions can find common ground. This is also the case of the above mentioned symbolic reconciliation of fire with water, but it also refers to the architectural approach when nature meets human work and makes a balanced compromise at this very spot (see the diagram on the right). Reconciliation is also typical of this place from the historical point of view, when the iron curtain lead through these places and armed guards moved along the present-day cycleway.

MP4S offers to visitors a wide range of entertainment, cultural enrichment, but also the possibility to try out living in tree tops, or just a mere rest and recovery of their strengths. Due to this and due to its location nearby Bratislava, Austria and Czech Republic and its easy accessibility (both by transport, on bicycle or on foot), the premises will certainly be much frequented.

_PRODUCT OF HUMAN



_PRODUCT OF NATURE



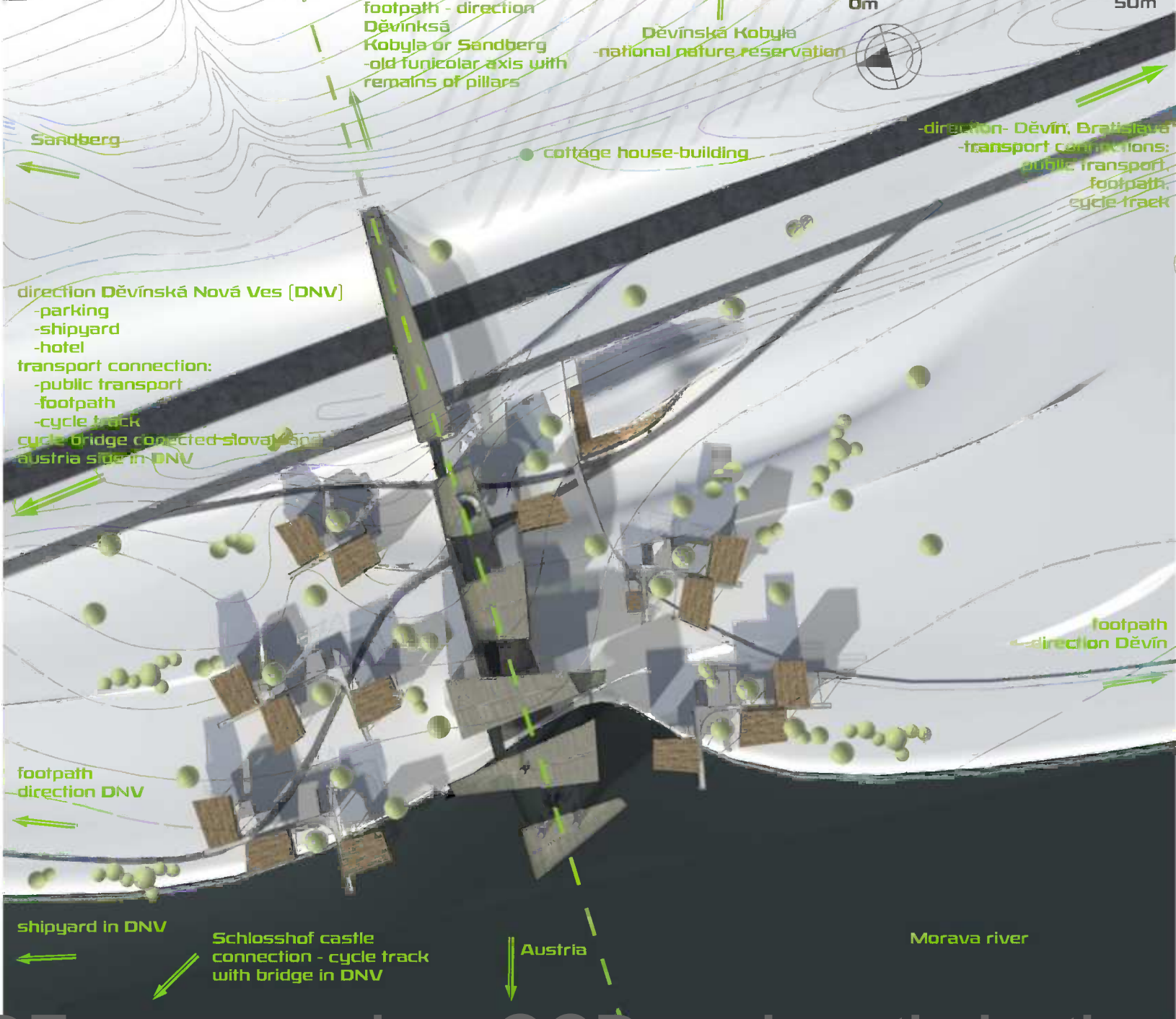
VS.

PROCESS OF DISCUSSION

_COMPROMISE



MASTER PLAN



ENTRANCE FLOOR



the space under the bridge serves as a bicycle hire and bicycle storage service
here, visitors can receive basic information about the premises

an inconspicuous building that is part of the terrain offers to visitors the possibility of boarding and related services including facilities for staff. it further consists of a reception desk for recreation accommodation and a wheelchair accessible



a personal elevator enabling transport of the physically handicapped

vertical communication - ramp

reinforced surface interconnecting the space between the cycleway and the riverbank
besides resting places and vertical road networks- it offers space for "land art", or art exhibited in the open air

space for an open air cinema
cinema projection is ensured from the unit situated on the aboveground footbridge

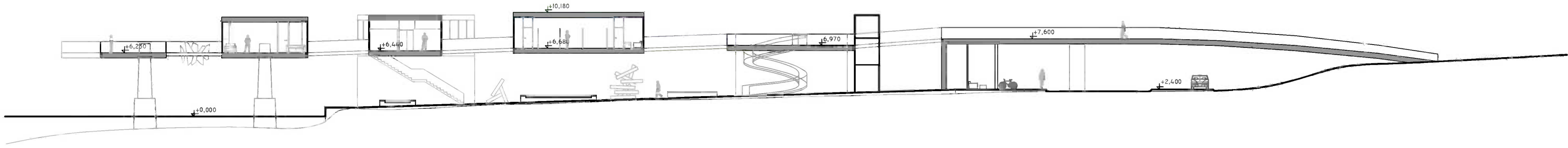
vertical communication - stairs
connection with the gallery
possibility to supply the café

a jetty makes it possible to visit MP45 even from water, for example for people, who hire a boat from the nearby boathouse

four pillars protruding from water and among them, under water surface, there is a spotlight lighting the "fire ring" in the aboveground from below

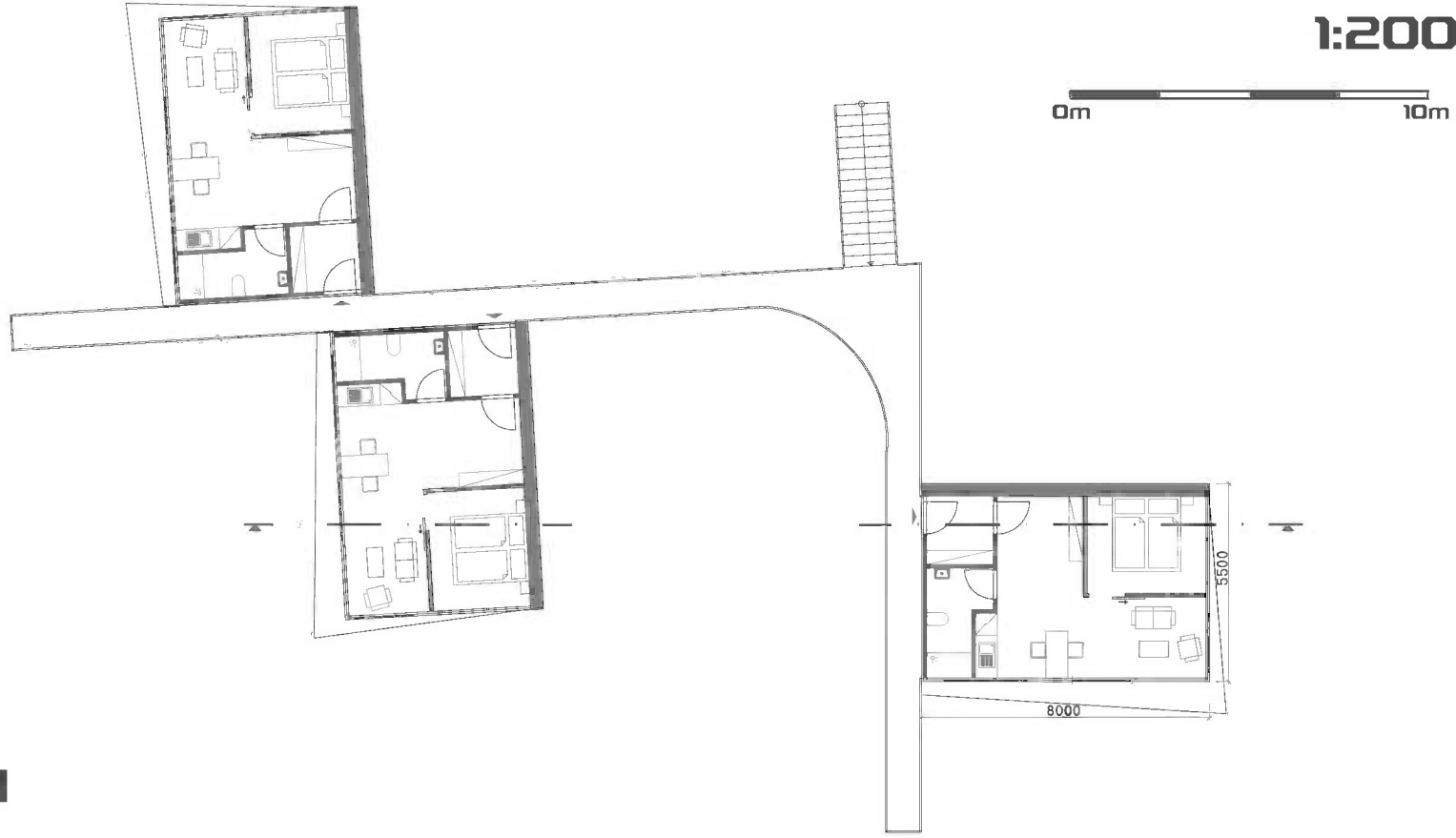


SECTION



RECREATIONAL ACCOMMODATION

FLOOR

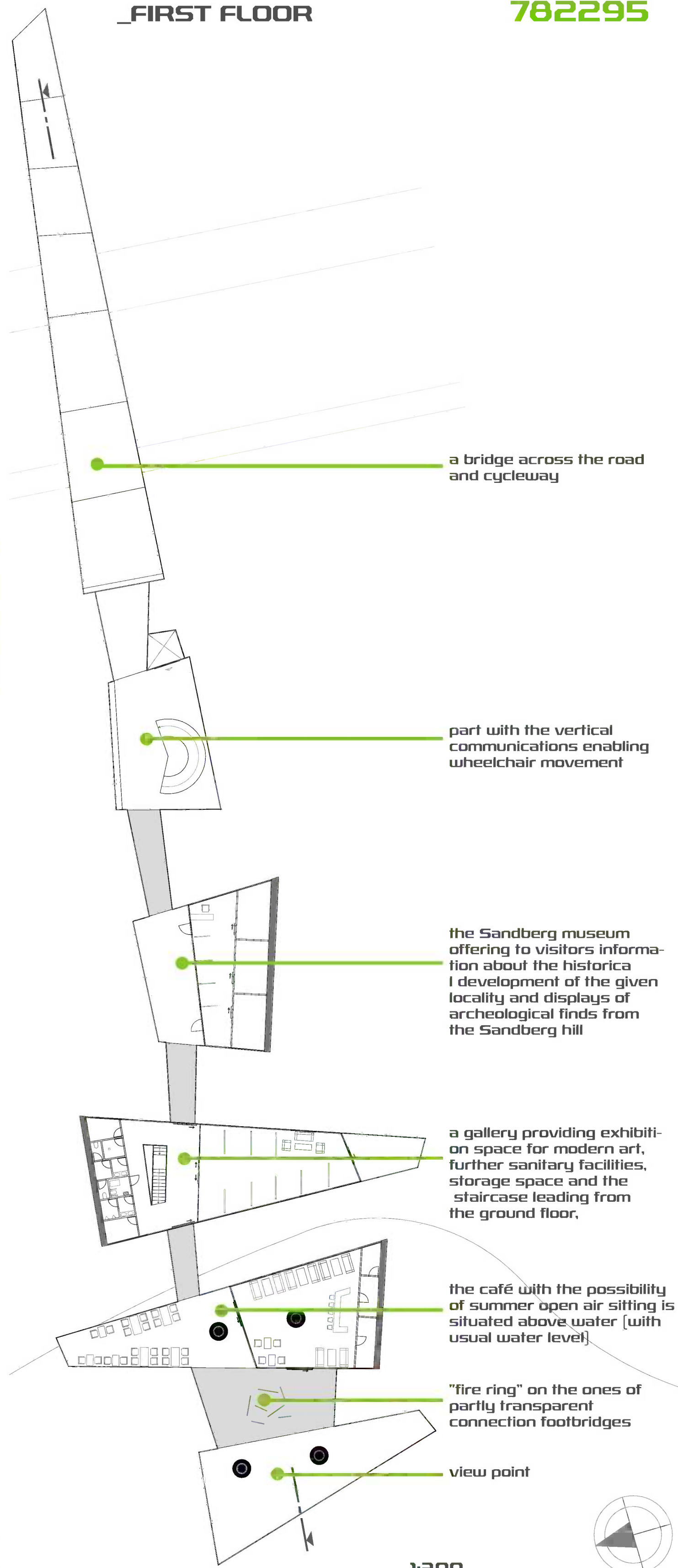


SECTION



FIRST FLOOR

782295



a bridge across the road and cycleway

part with the vertical communications enabling wheelchair movement

the Sandberg museum offering to visitors information about the historical development of the given locality and displays of archeological finds from the Sandberg hill

a gallery providing exhibition space for modern art, further sanitary facilities, storage space and the staircase leading from the ground floor,

the café with the possibility of summer open air sitting is situated above water (with usual water level)

"fire ring" on the ones of partly transparent connection footbridges

view point

1:300

0m 20m

