

# 4 MEETING POINT FORCES

## INTRODUCCIÓN

The purpose of this project is to improve the relationship between the Moravian river and Sandberg town with a series of interventions in this zone.

These interventions will be the creation of a walk to the edge of the moravian river, the creation of a cultural center meeting and give people a new space for relationships, for recreation, sports, culture and enjoy the nature.

The site is located in an area where there are four pillars representing the 4 countries: slovakia, hungary, czech republic and austria, now not a lot of people knows this place because is very difficult to find, never before nobody made an intervention to improve this place, for this reason, in this project I want to improve this place, for people to enjoy this place that now nobody knows and while you learn and know the cultural area

The intervention in this place by not heavily affect the environment, preserving most of the existing trees and creating a building that does not aggravate the views of this place.

building the form of deformed by force of the environment where are the building, these forces are the river, the town of sandberg, and the forces of trees in the forest.

for this reason just taking an organic form.

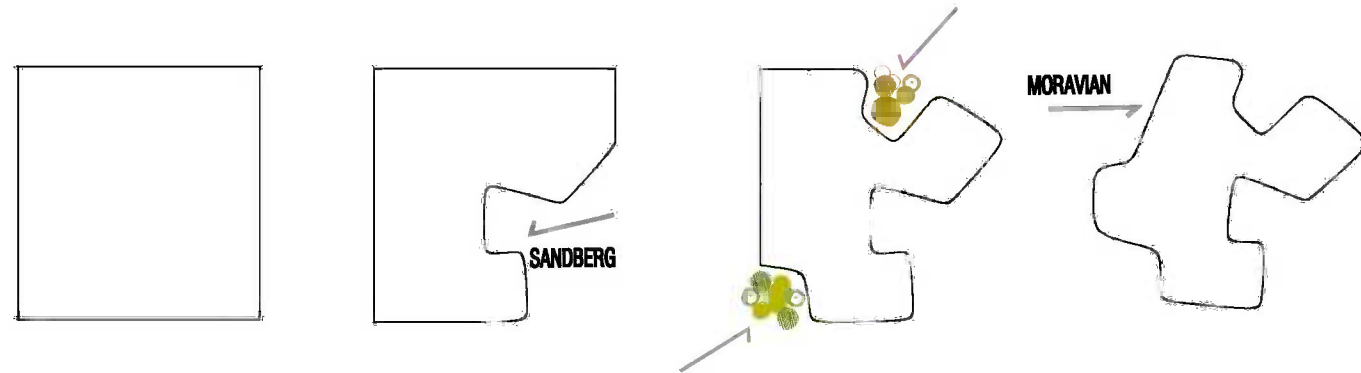
this building has 4 pavilion, pavilion because each represents a country: slovakia, austria, czech republic and poland.

use of this pavilion is different in each of them, the building includes a bar, an auditorium and two exhibit halls.

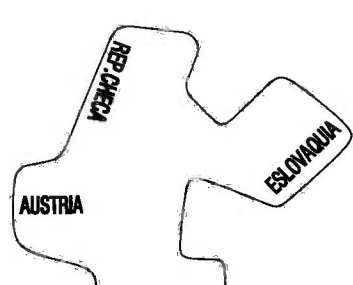
outside the building is a promenade linking people with devinska sandberg, on this trip one can sit, walk, play sports and has a spring to improve communication the building by the river meadows.



## FOUR FORCES

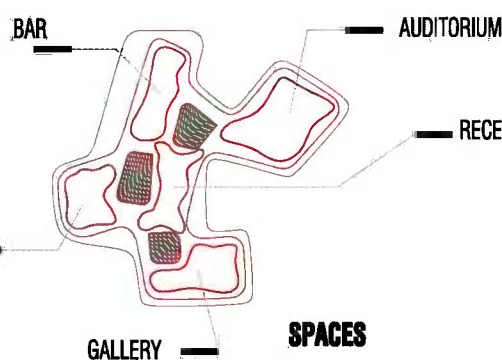


## DIAGRAMS



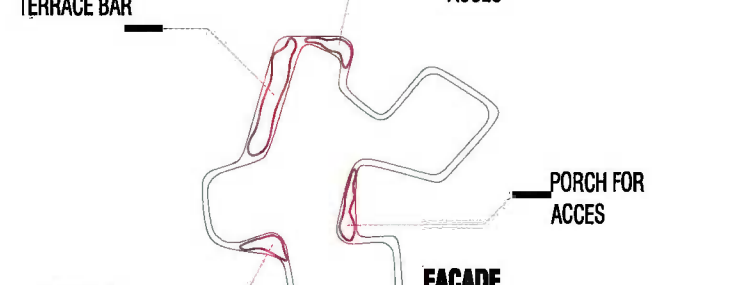
### PAVILIONS

The building has four different zones as representing the four countries (slovakia, czech republic, austria and hungary) and to have a relationship with the 4 pillars of the space



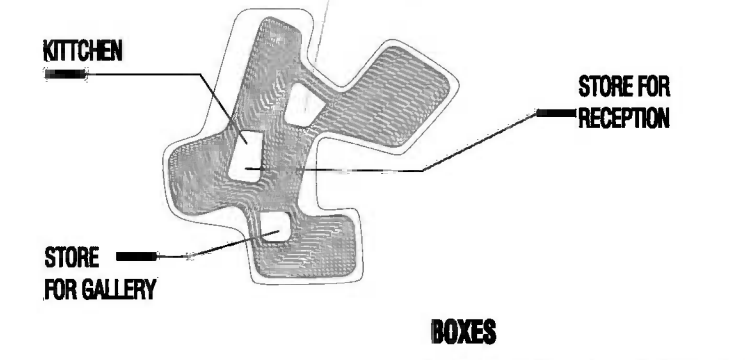
### SPACES

The building is divide into 5 different areas thanks to the 3 rooms that divide the space. They will be subject to its position. These 5 different areas are 2 rooms where are located the galleries, 1 bar with terrace overlooking the river and the 4 pillars and one auditorium.



### FACADE

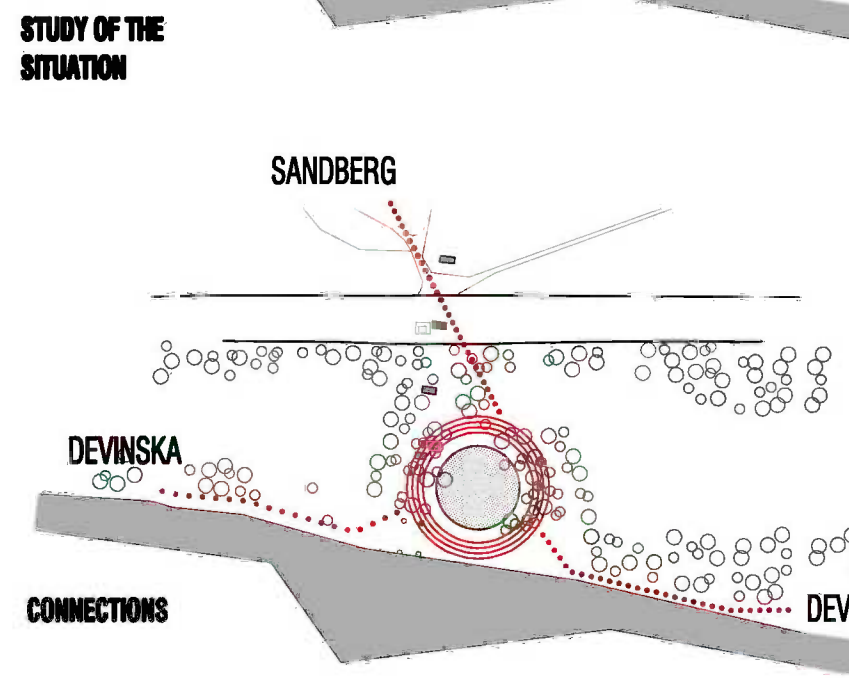
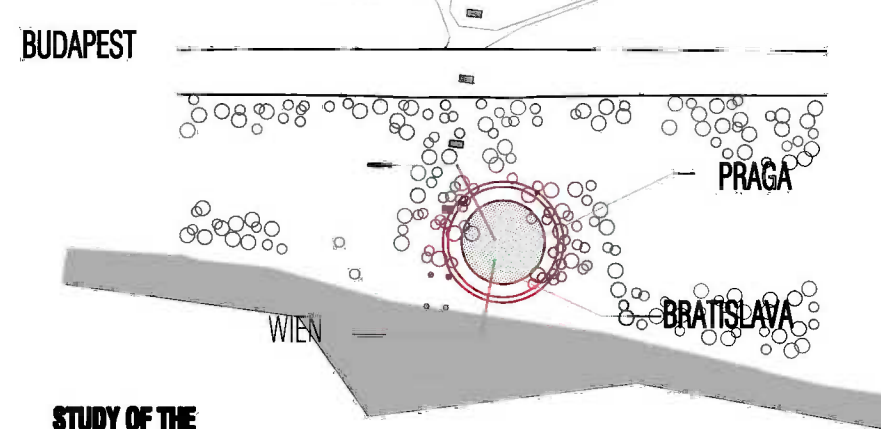
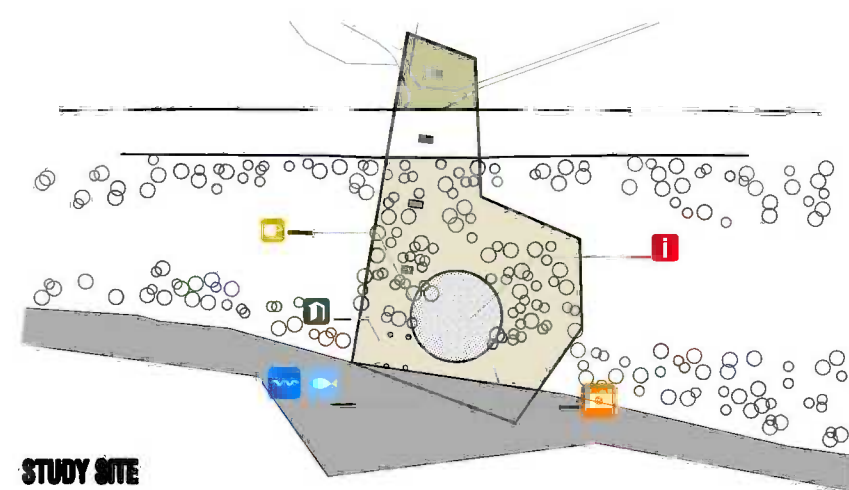
The building has a glass facade and move back a little meters for a protection of the sun and for create a new space like a porch for the main entrance and the bar and for create terrace for the bar and for the gallery.



### BOXES

The building is divide into 5 different areas thanks to the three rooms that divide the space. These three boxes are made with YONG concrete. These different rooms has the wc, the kitchen for the bar, the store for the gallery.

## STUDY OF THE EMPLACEMENT



- INFORMATION POINT
- NICE VIEWS
- BAR
- CULTURAL INTEREST AREA
- ACCESS TO LEVEL THE RIVER
- FISHING ZONE



EXTERIOR VIEW



LOCATION



EXTERIOR VIEW



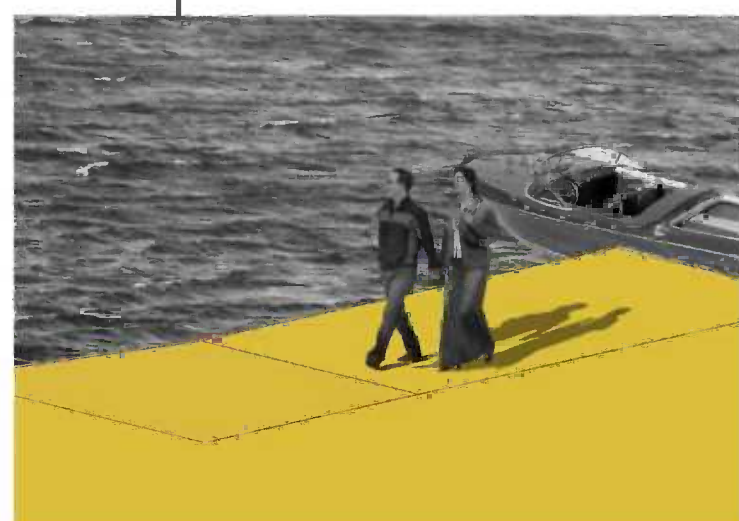
EXTERIOR VIEW



EXTERIOR VIEW



TERRACE



MOLLE



EXTERIOR VIEW

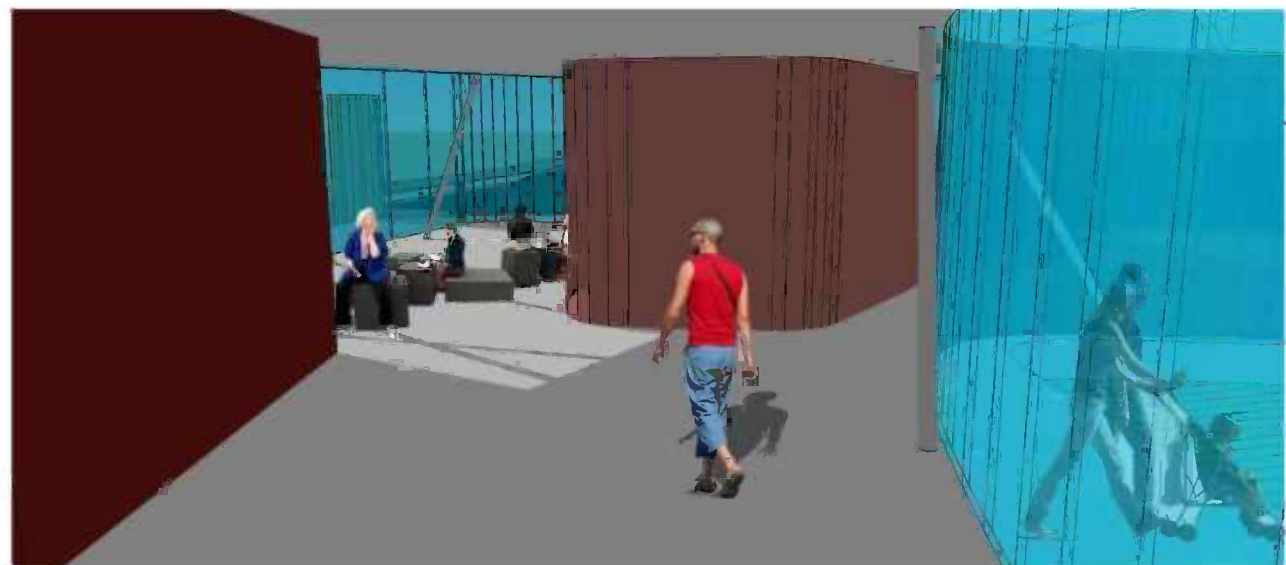


WAY





GALLERY



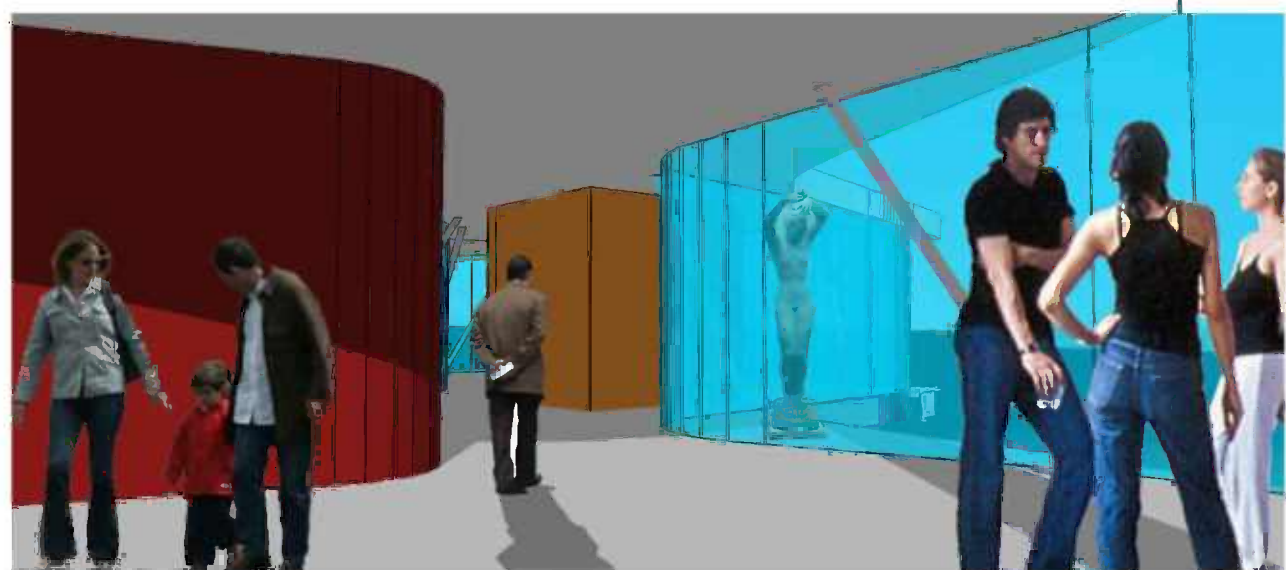
RECEPTION



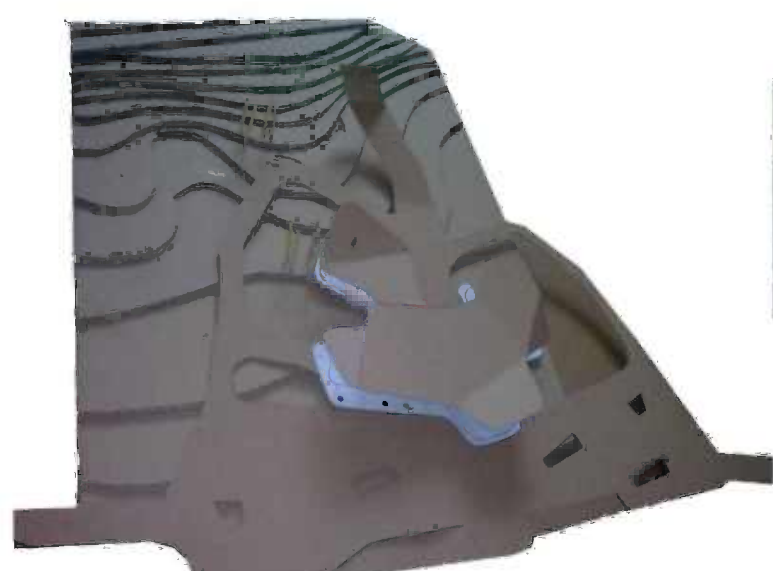
AUDITORIUM



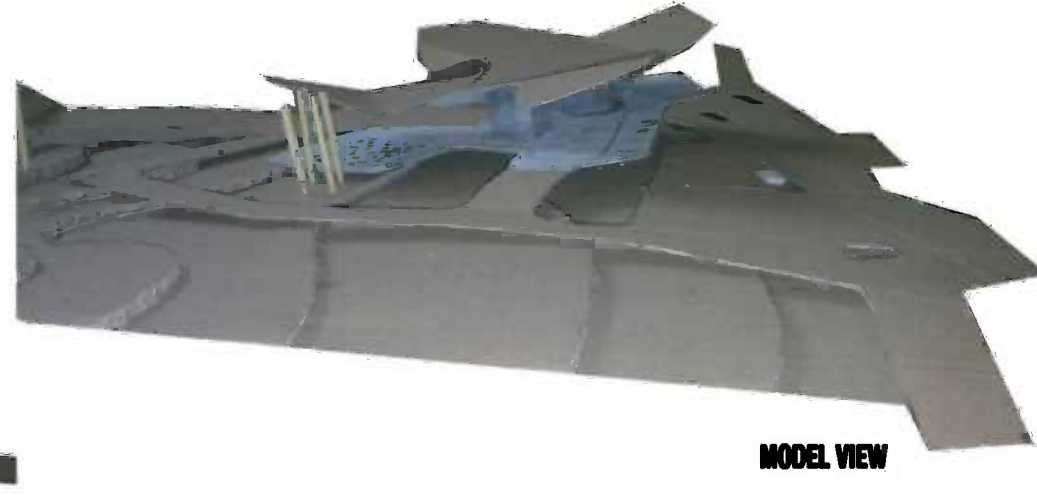
BAR



GALLERY WITH TERRACE



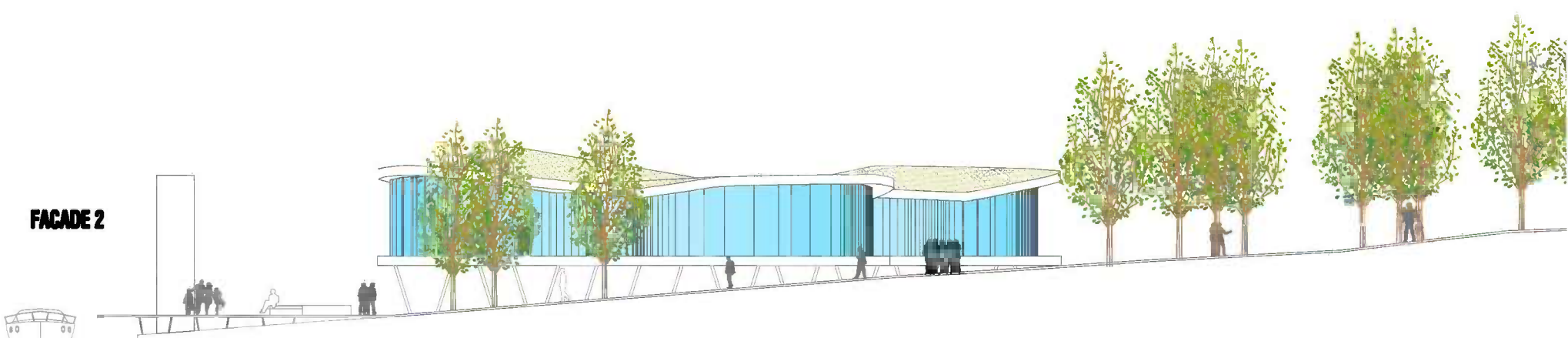
MODEL VIEW



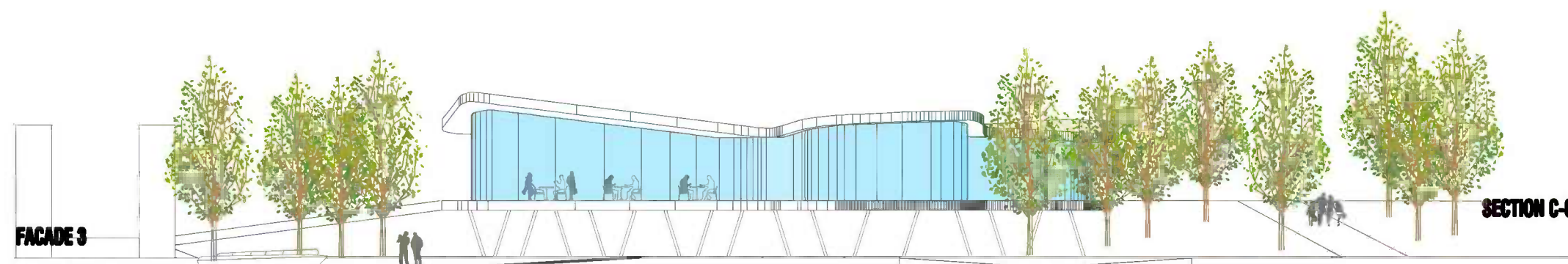
MODEL VIEW



MODEL VIEW

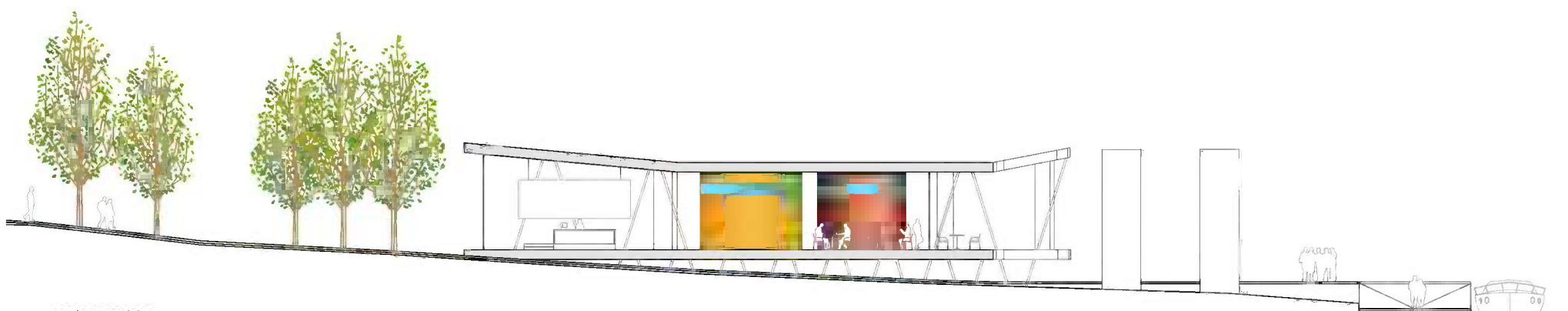


FACADE 2

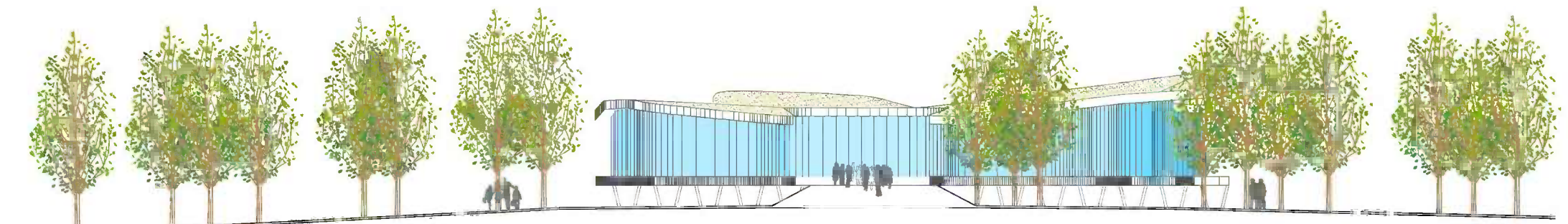


FACADE 3

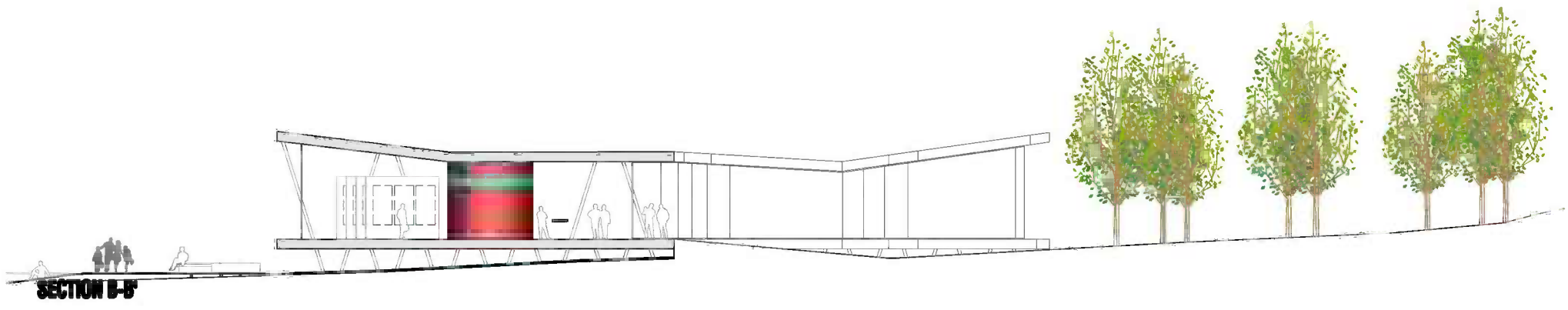
SECTION C-C



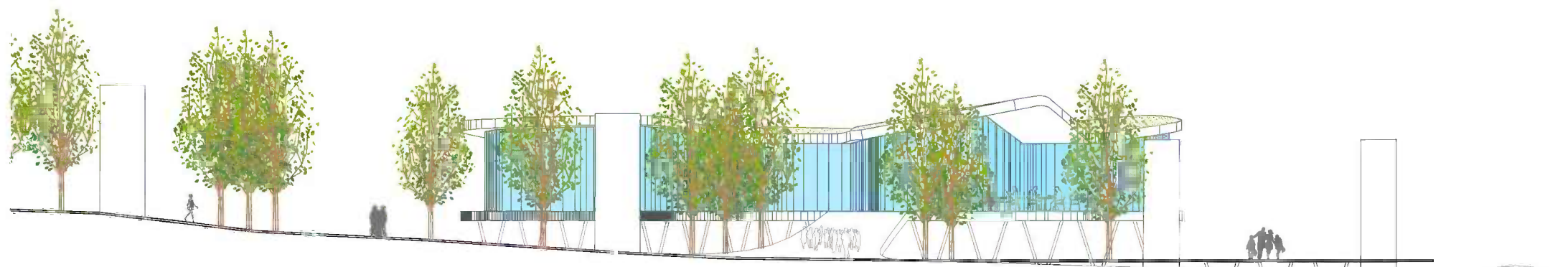
SECTION A-A



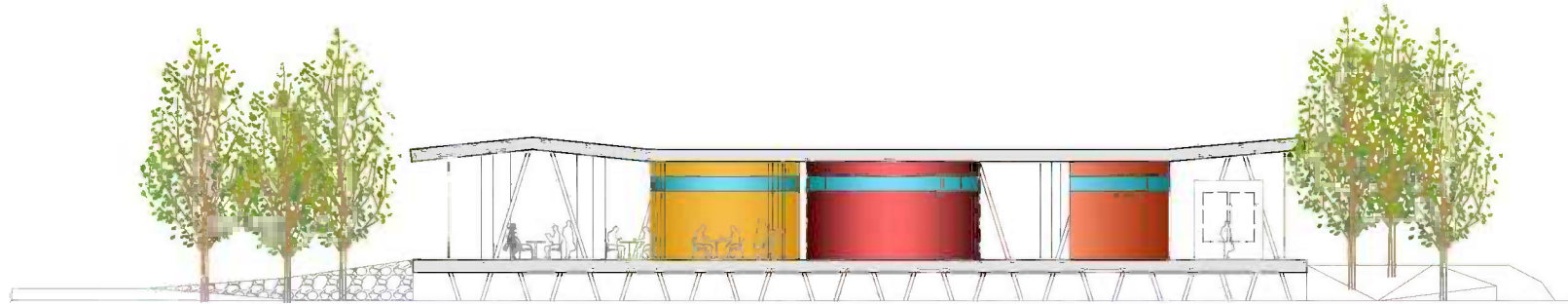
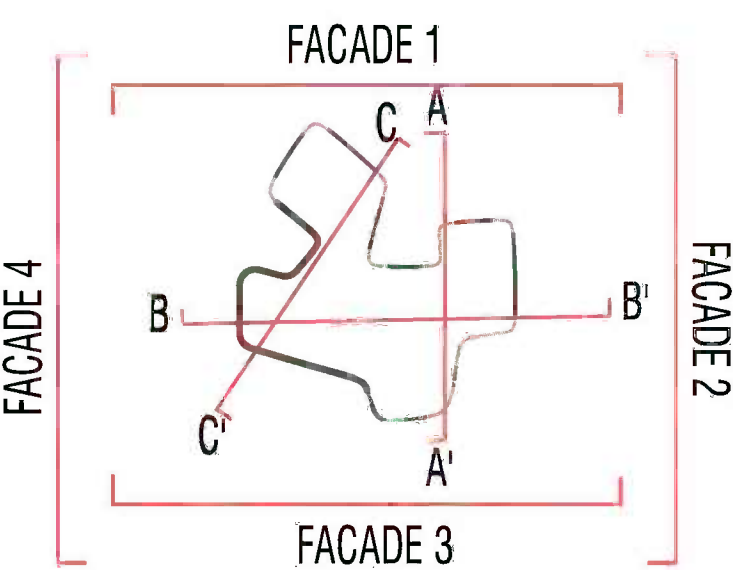
FACADE 1



SECTION B-B



FACADE 4



SECTION C-C

# 4 MEETING POINT FORCES