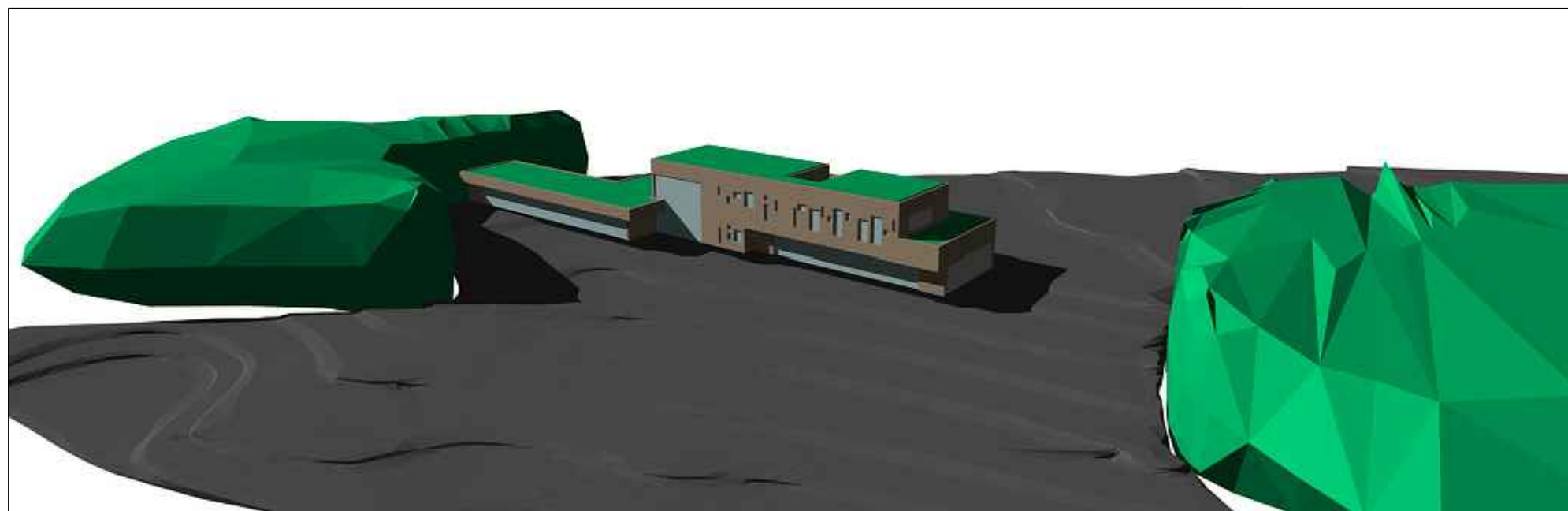
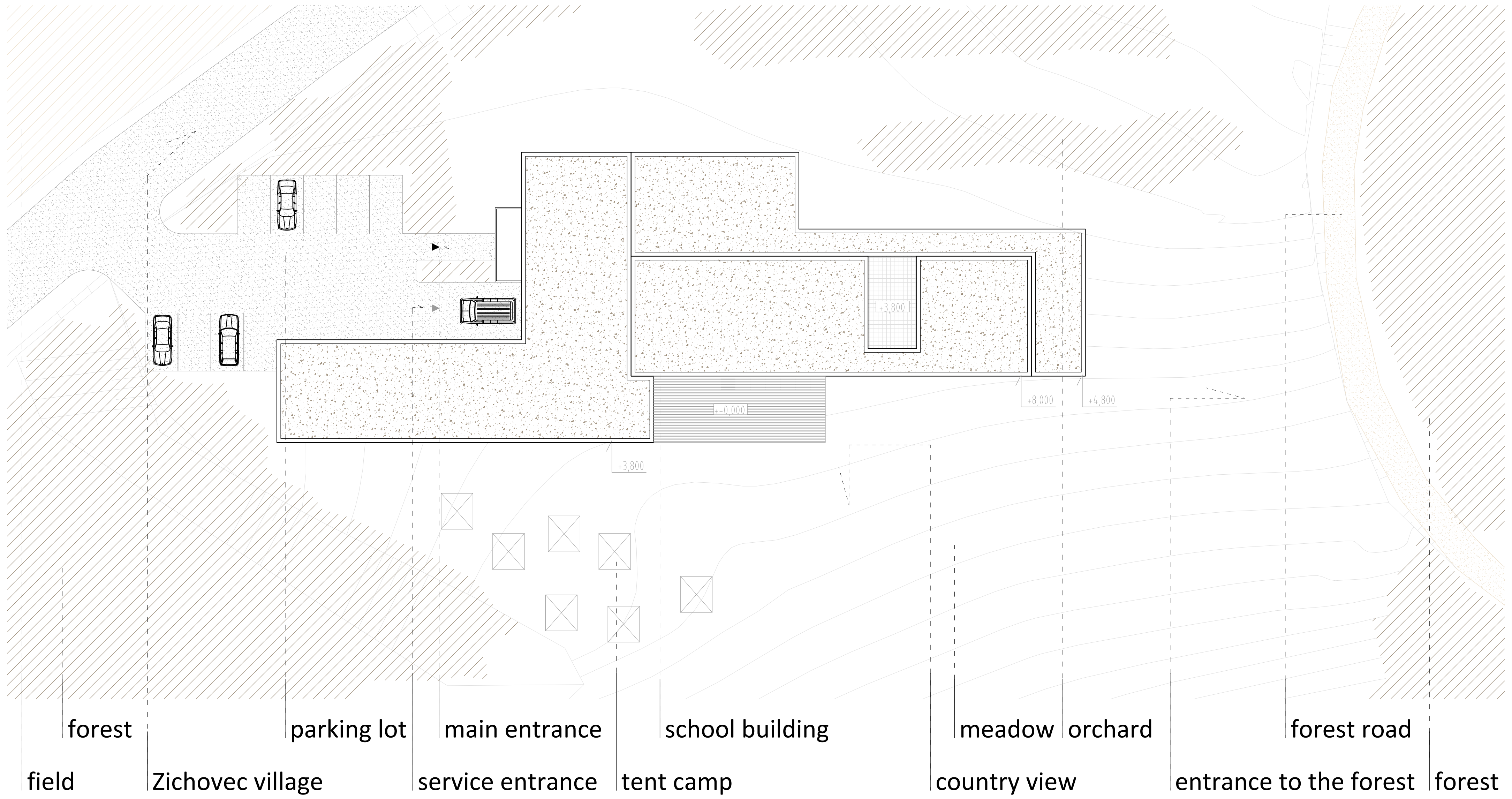
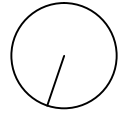


position

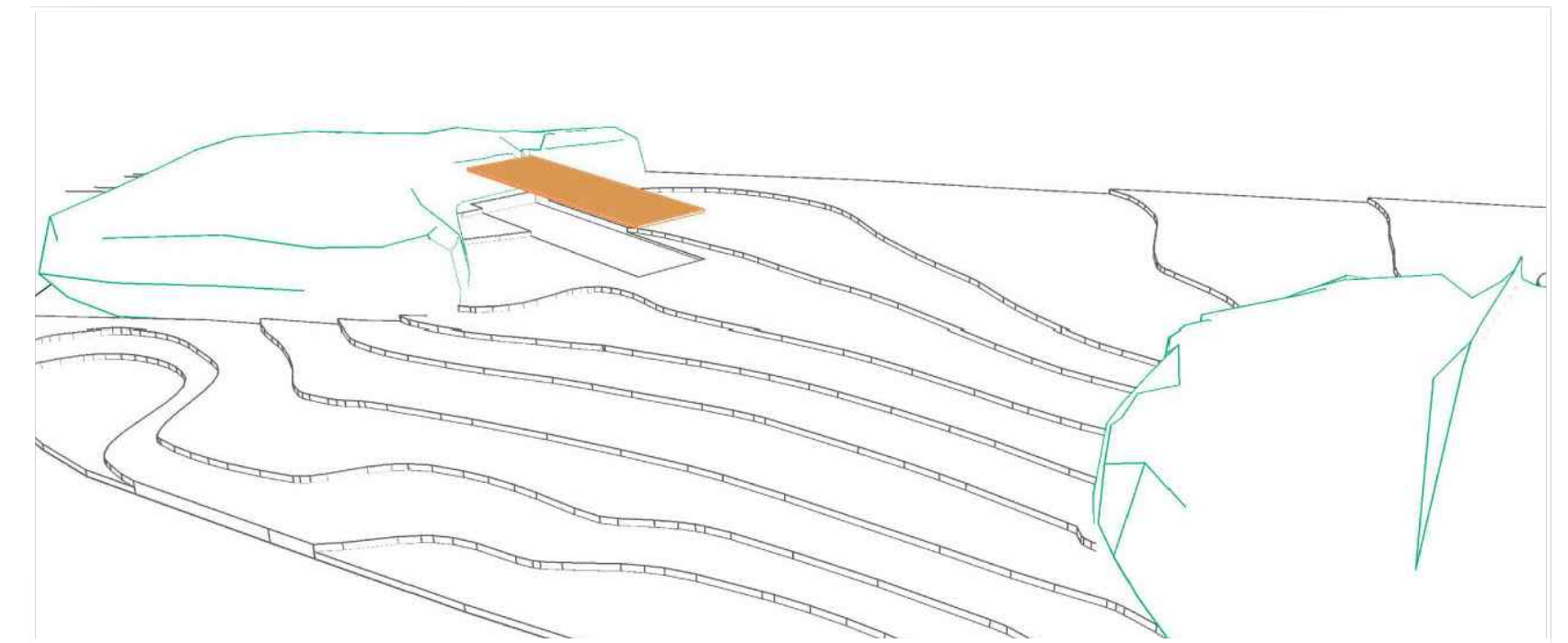
M: 1:200



accomodation

5 separate rooms for teachers and families

tent camp
sanitary facility for summer use

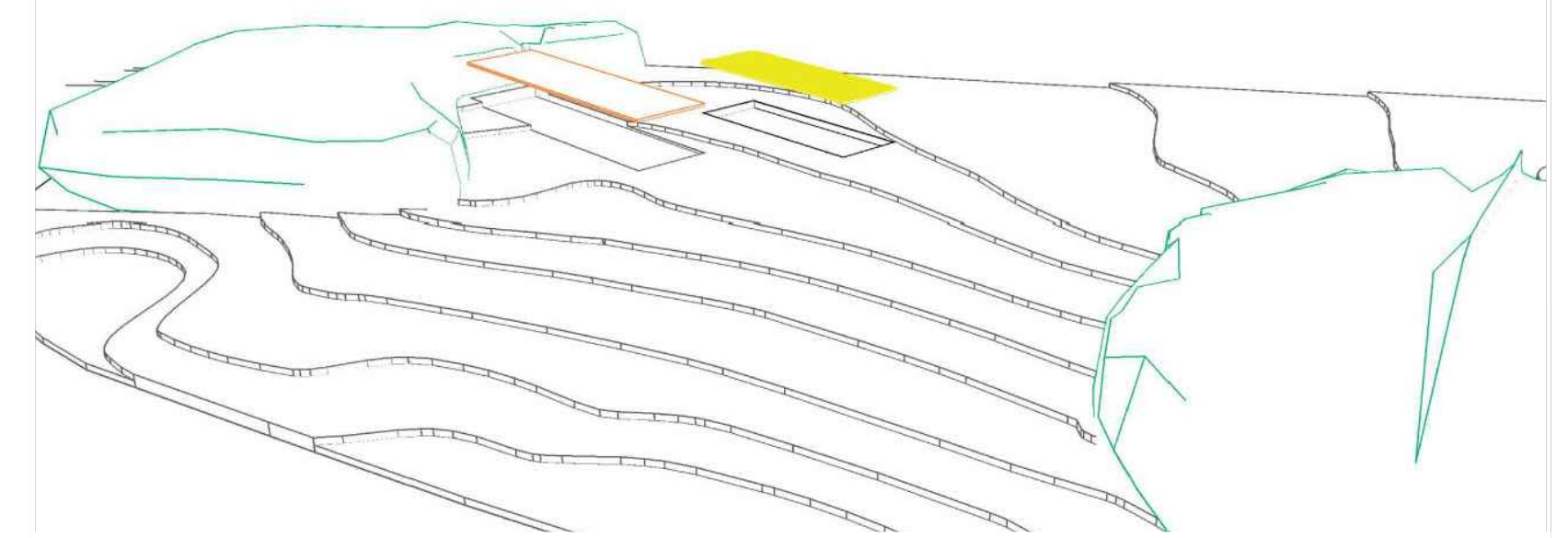


The building is designed in a minimalist style. The main volume is made up of a number of masses, which were formed by extruding individual functional units. Each section has its own individual characteristics arising from its function. The parts are connected in the way that ensures operation without collision and interference of other functions. The main spaces are always designed as multifunctional. The unit provides basic needs for the forest school operation. The main philosophy of proposal is austerity and functional simplicity. Form follows function. School serves only as necessary background for the wild country. It does not inhibit or compete with it. Nature is reflected in used materials and in the maximum openness of space.

nursery school

rear part for 3 teachers
meeting room, cloakroom, WC

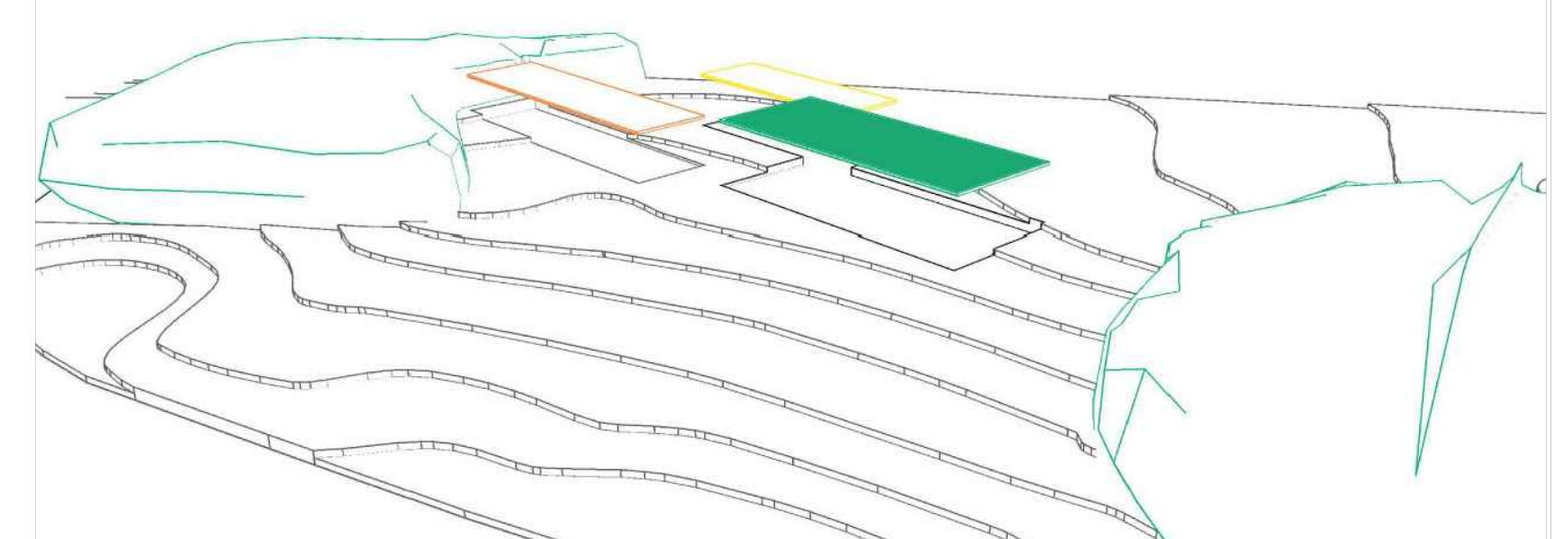
common space for 20 children
sleeping corner, playroom, cloakroom, WC



school

rear part for 4 teachers
meeting room, cloakroom, WC

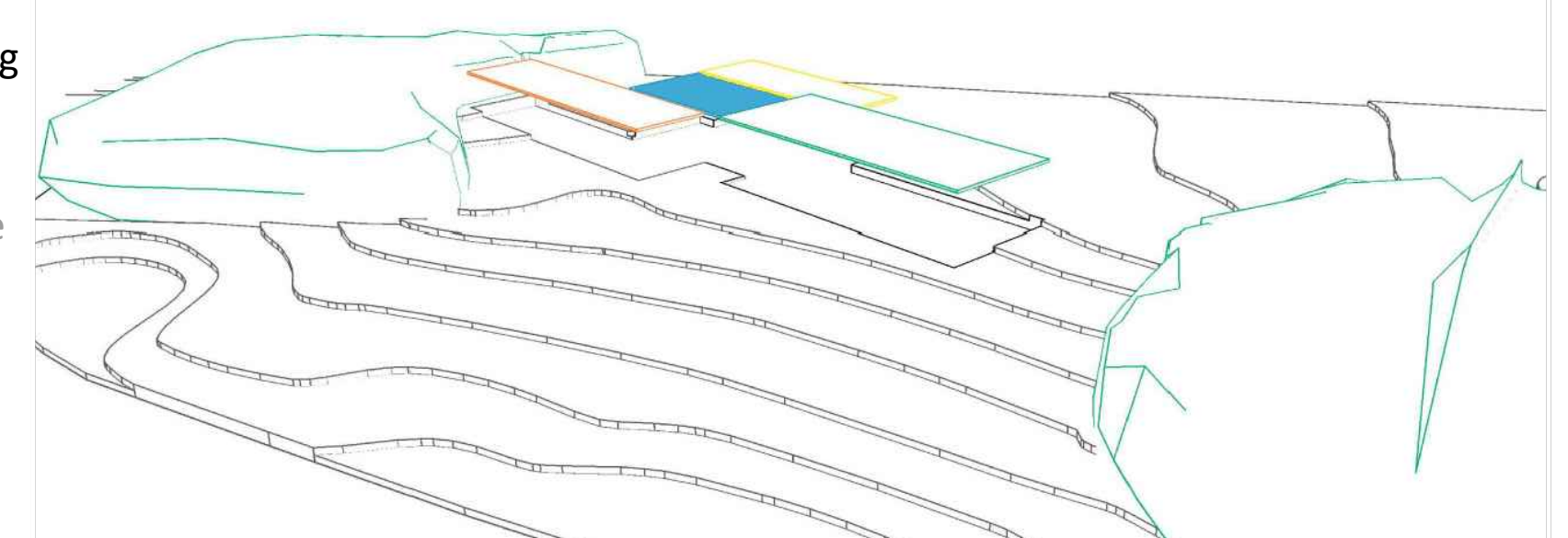
common space for 40 children
2 multifunctional classrooms
cloakrooms, WC



canteen, reception

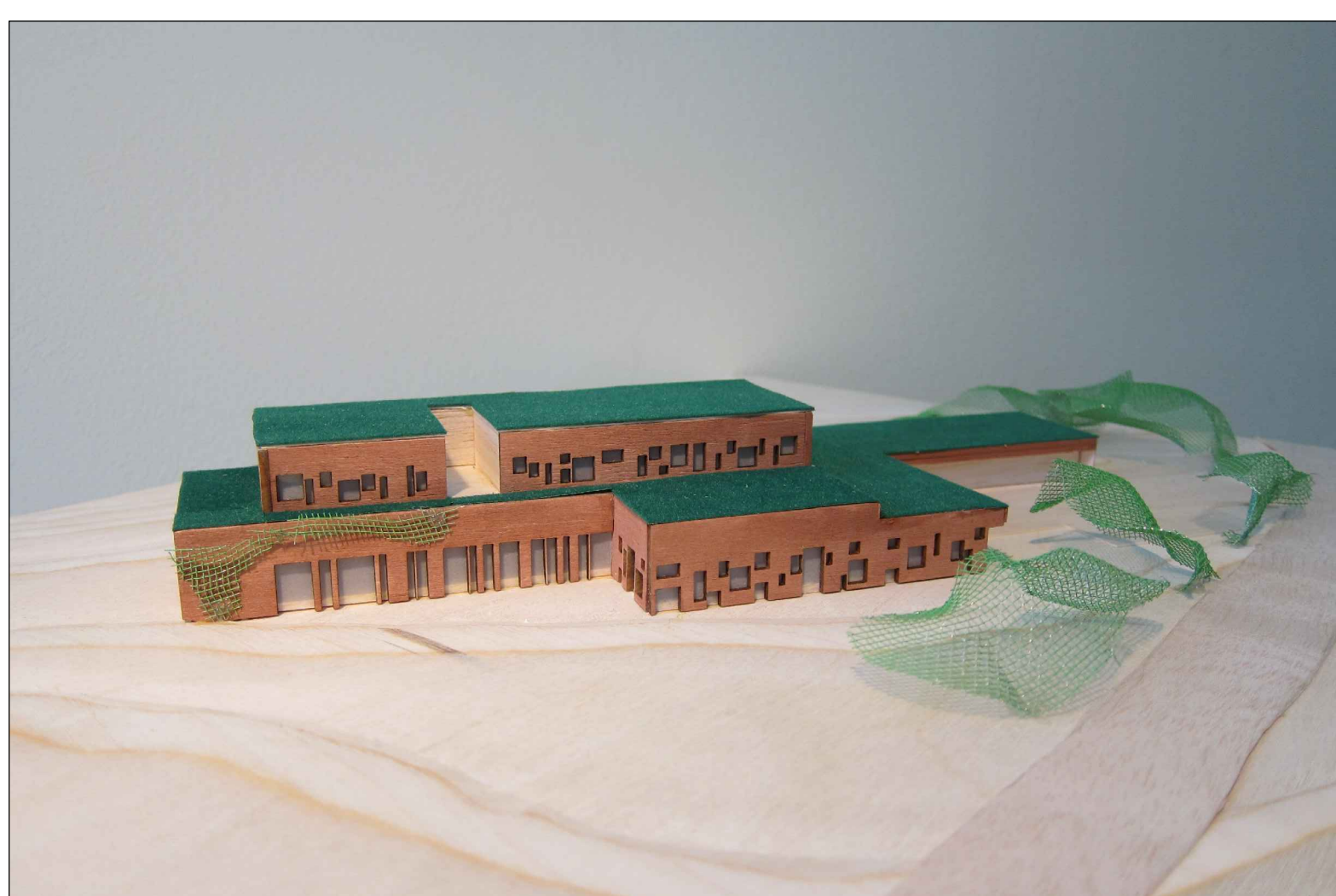
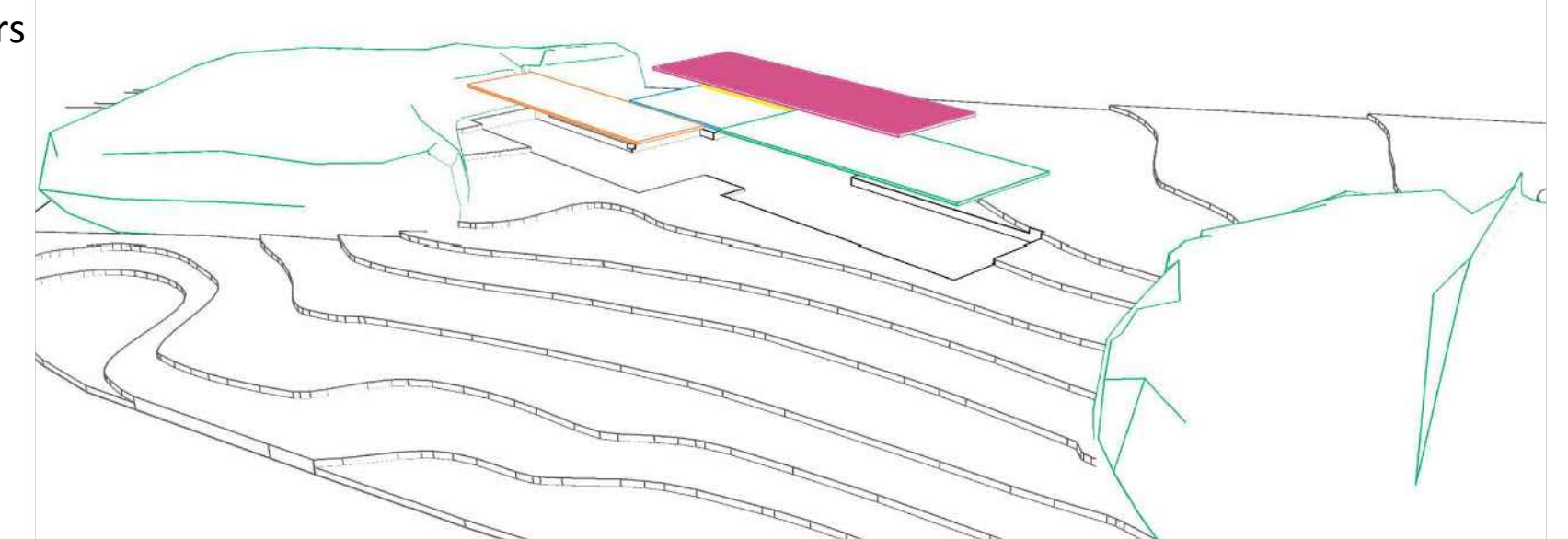
small kitchen for food serving
multifunctional space for eating and entertainment

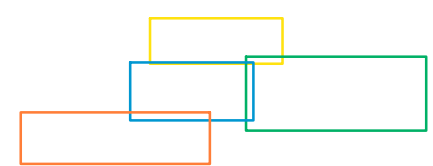
main entrance
reception desk, directors office



common area

relaxation room, library, ateliers
workshops





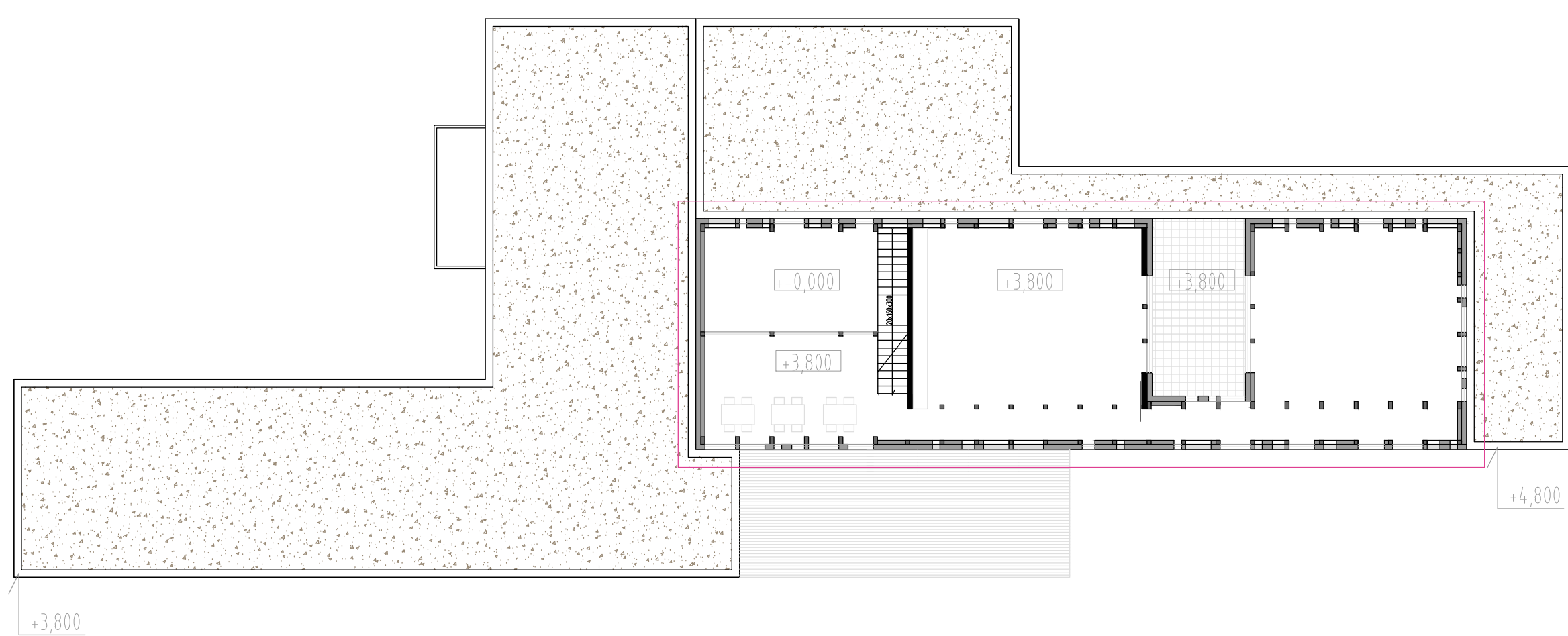
ground plans

M: 1:200



ground floor

a-a



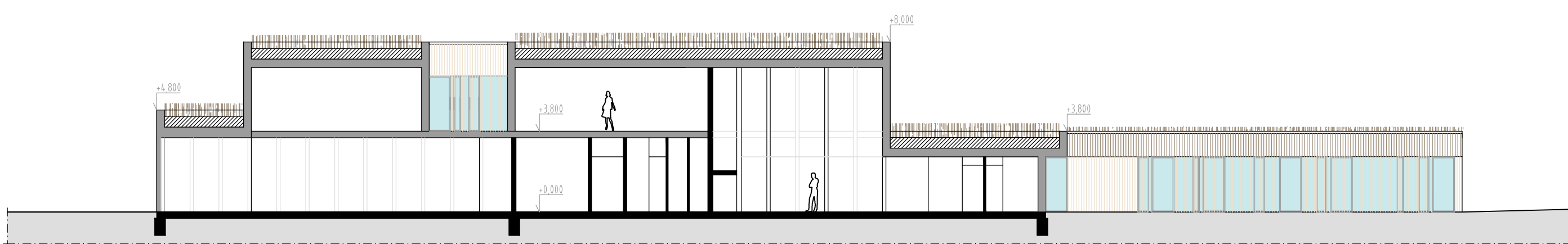
first floor

The supporting structure is made up of heavy wooden structure with a light jacket bearing. The main construction material is wood, used also in the interior of the school as much as possible. Green roof serve as a reflection of masses of growing meadow vegetation. It evoke a simple extrusion of terrain. The materials complete the simplicity and ease of construction.

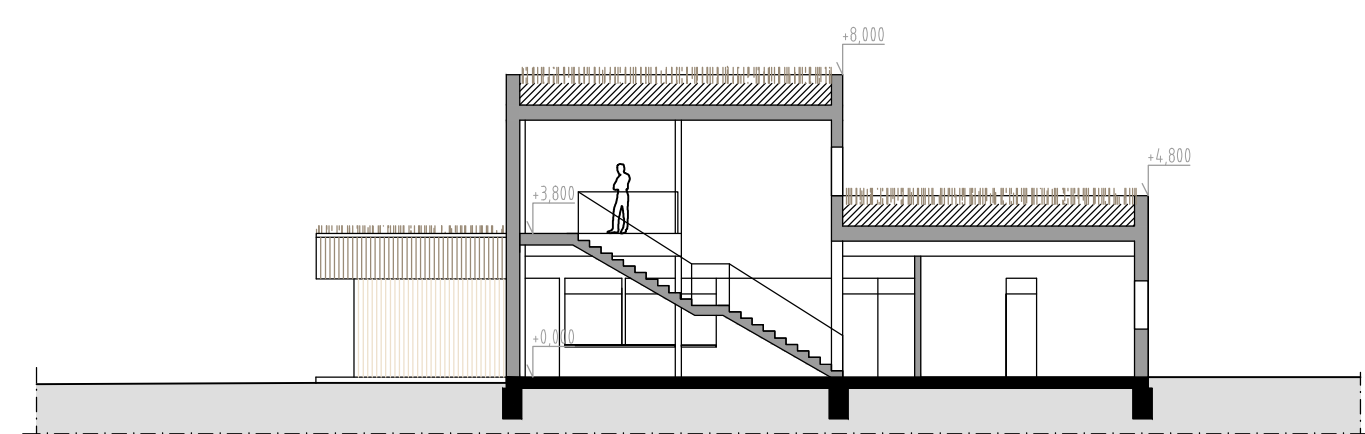


sections

M: 1:200



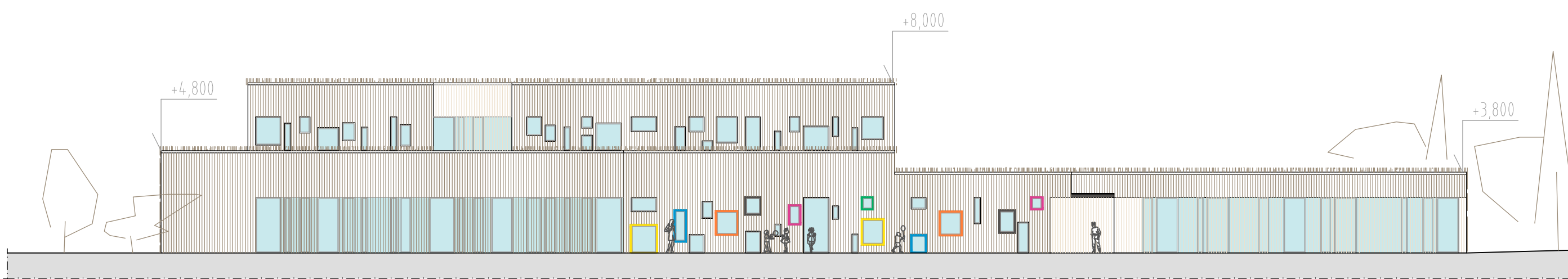
b-b



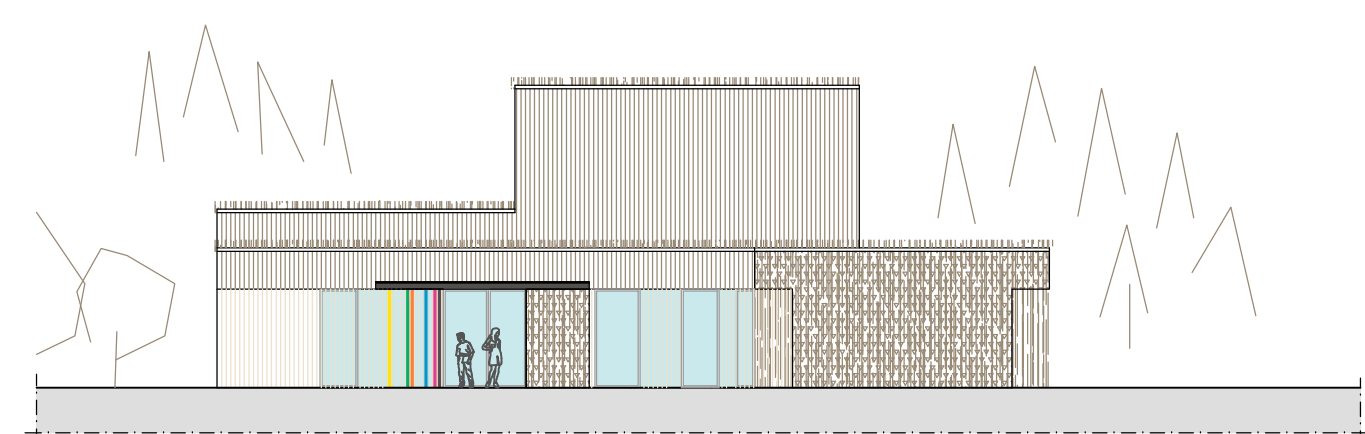
a-a

views

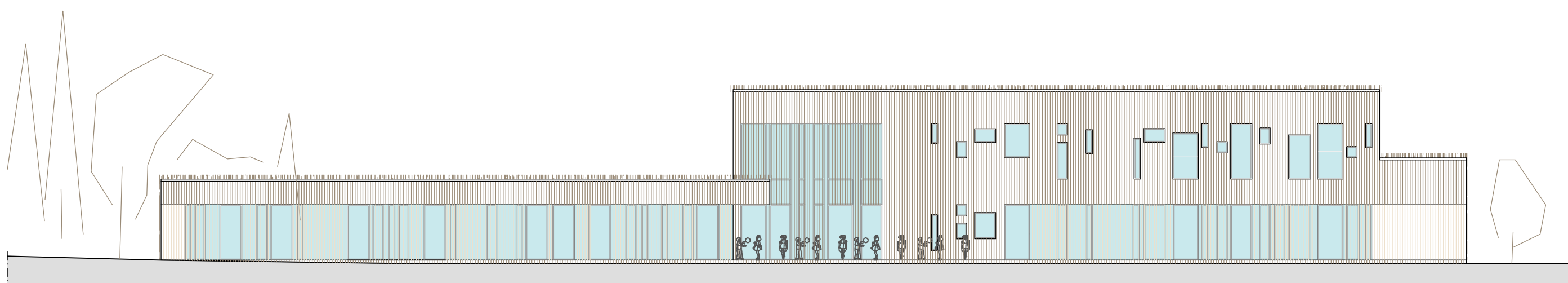
M: 1:200



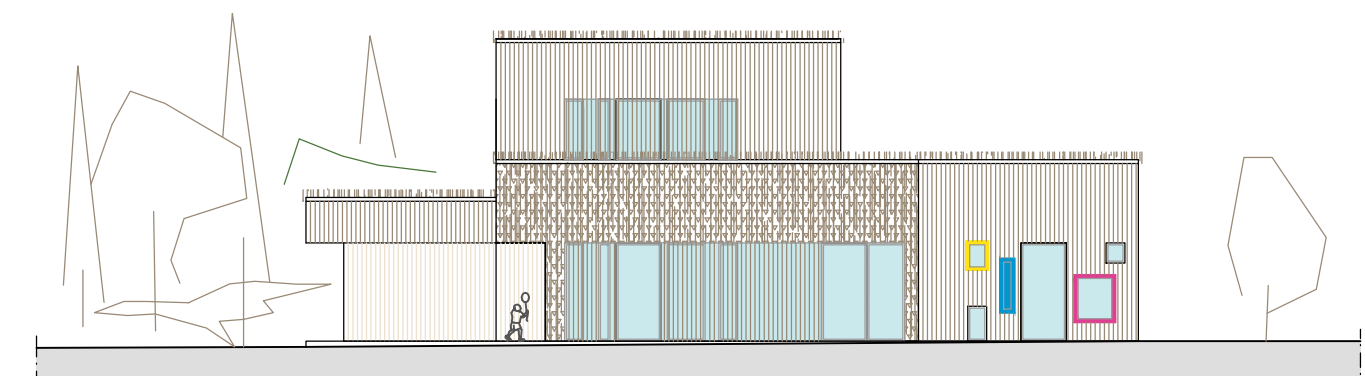
southern view



eastern view



northern view



western view