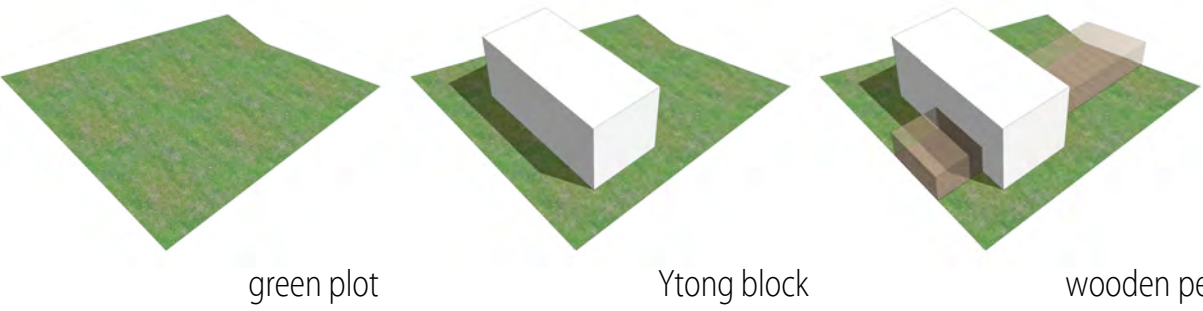


ZERO CHALLENGE

active life with a passive house

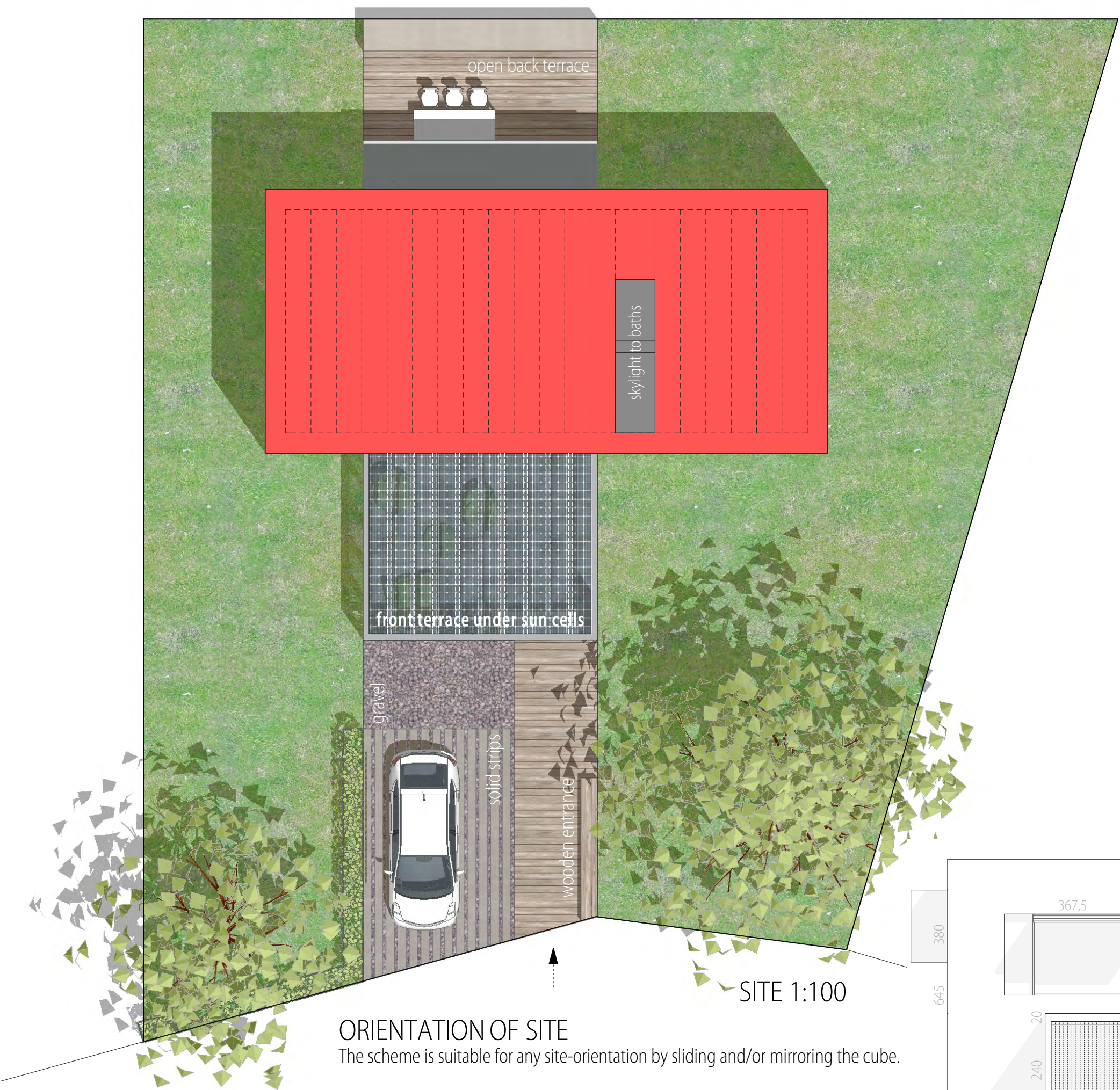
keep the most compact passive house shape
use actively the external and transitional spaces

BASE OF CONCEPT



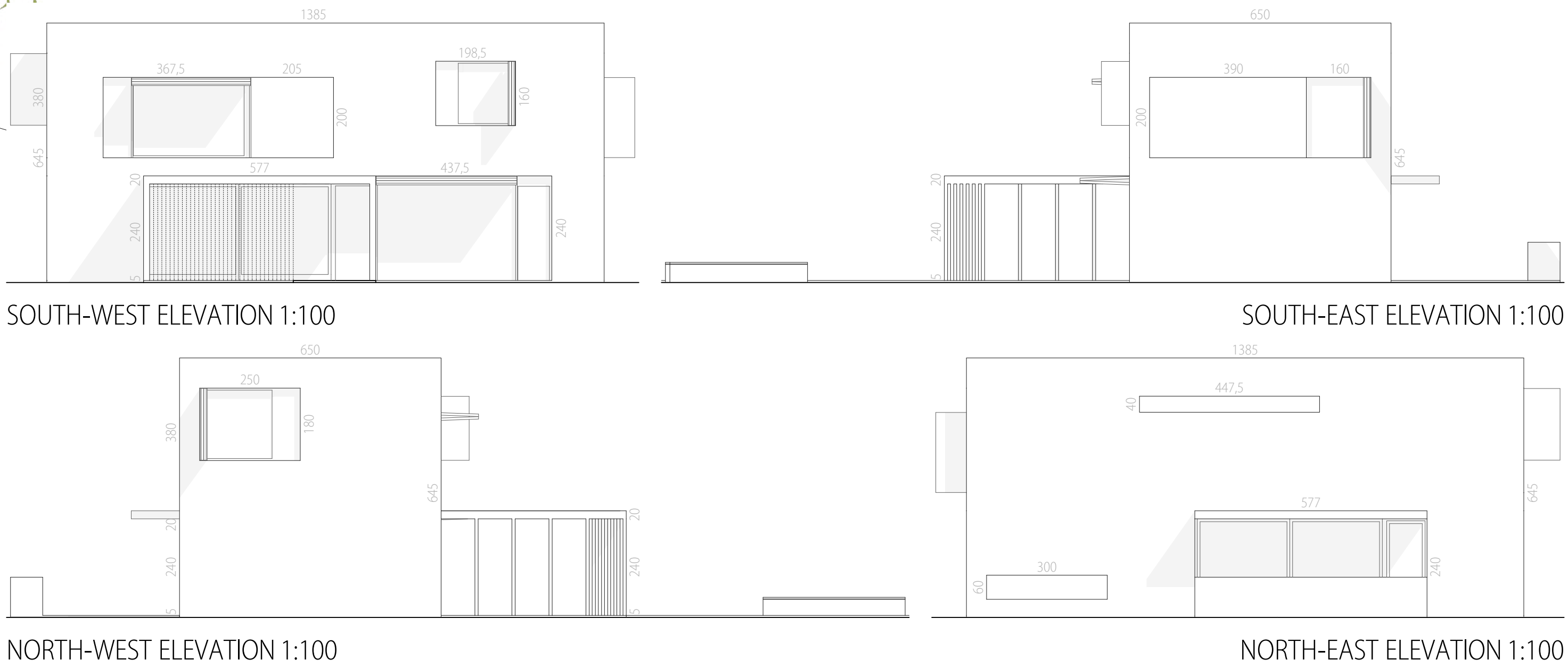
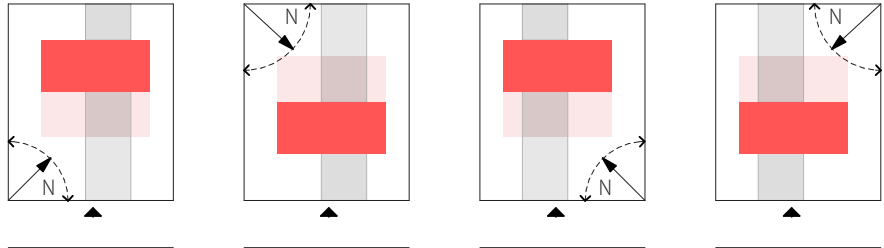
CONTRASTS

CUBE main standing solid tight cool constant closed artificial
PERGOLA added lying airy free warm variable opened natural

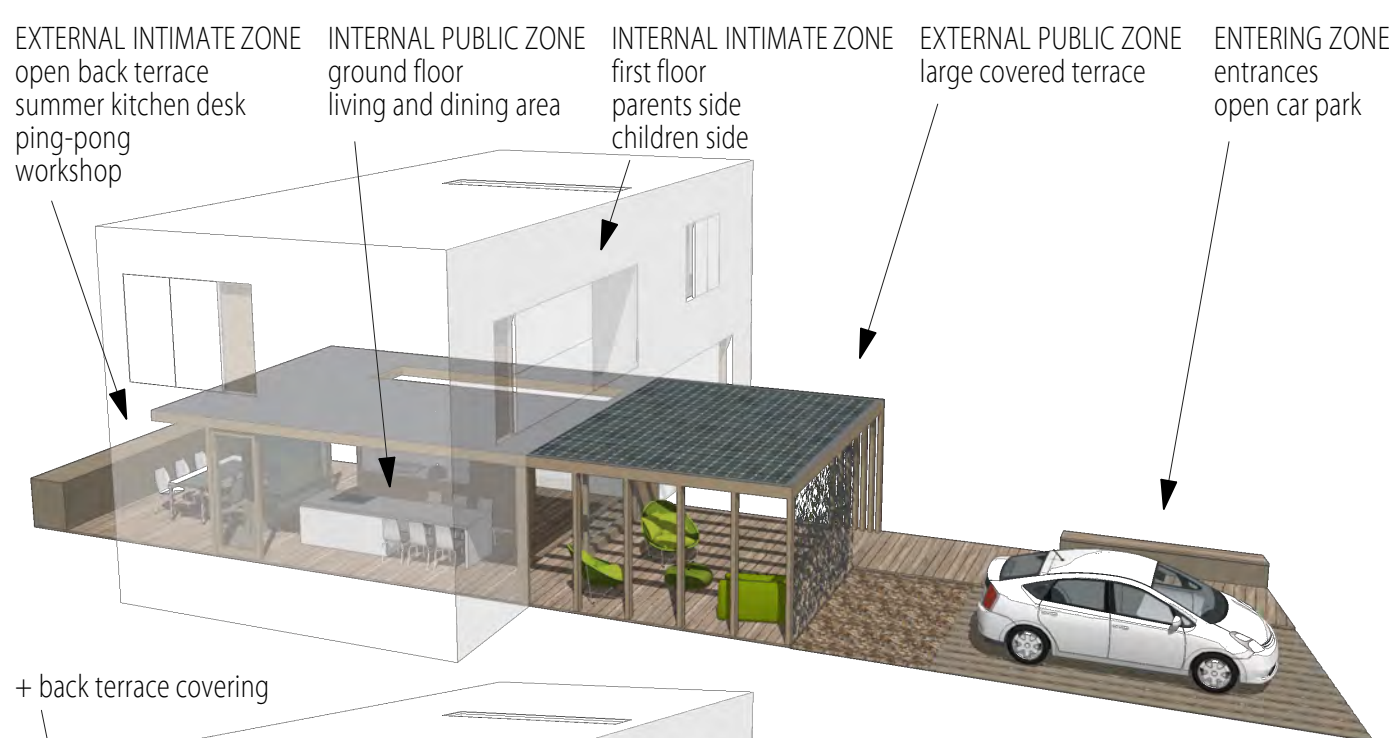


ORIENTATION OF SITE

The scheme is suitable for any site-orientation by sliding and/or mirroring the cube.

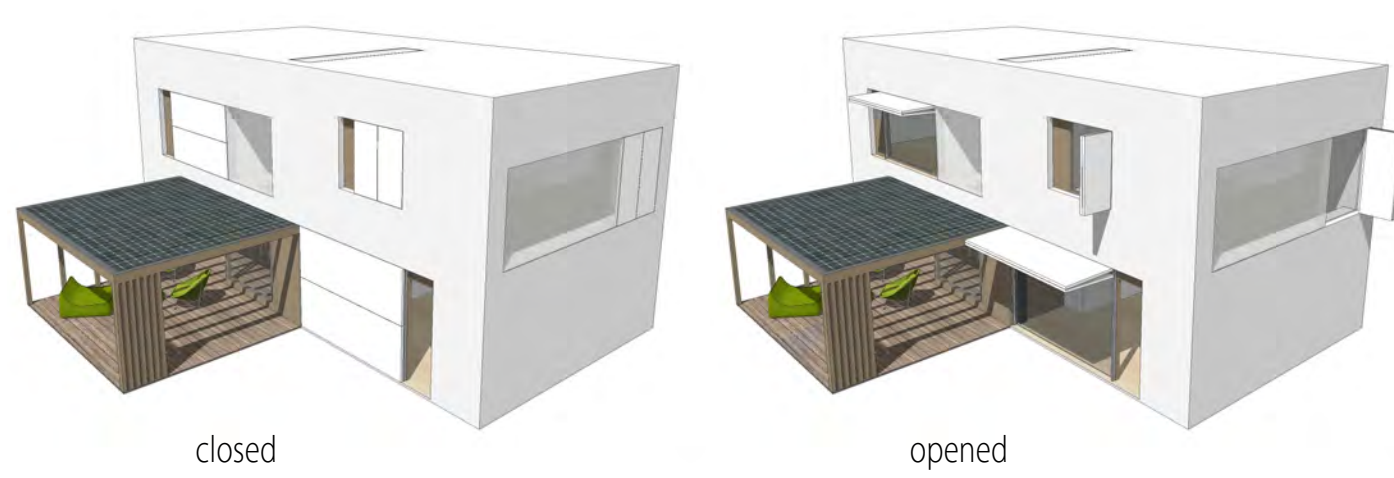


DEVELOPING POSSIBILITIES OF WOODEN PERGOLA - as client needs



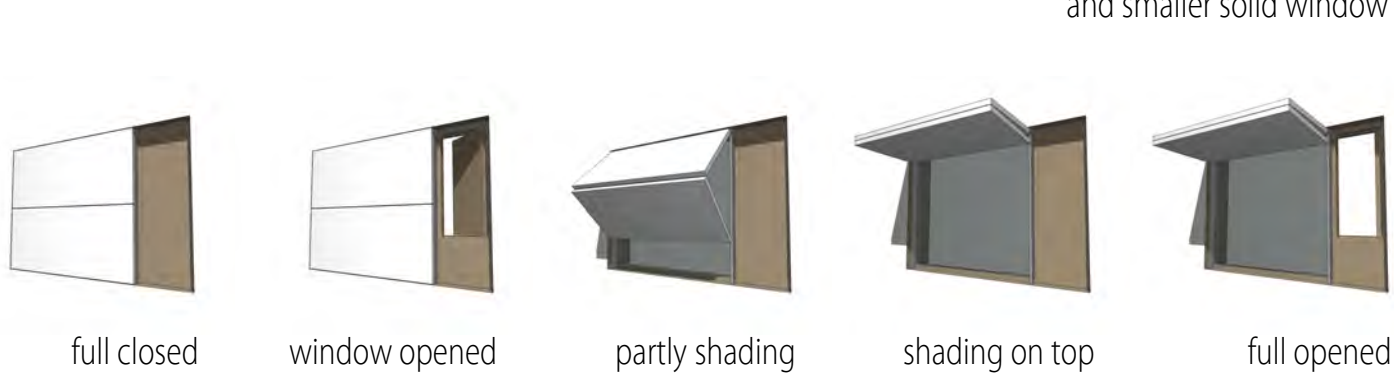
CLOSING AND OPENING THE HOUSE

idea: simple system that shades can vary



CLOSING AND OPENING THE WINDOW

idea: large fix glass with shading and smaller solid window



YTONG ELEMENTS

all walls and slabs from Ytong

- Ytong Dachplatten (625x5700x240mm): 37
- Ytong Thermoblock PV2 (625x200x300mm): 1200
- Ytong Multipor (600x400x200mm): 1620
- Ytong Plansteine (625x500x120mm): 600
- Ytong Sturz Element (Aussenwand): 7
- Ytong Sturz Element (Trennwand): 9

